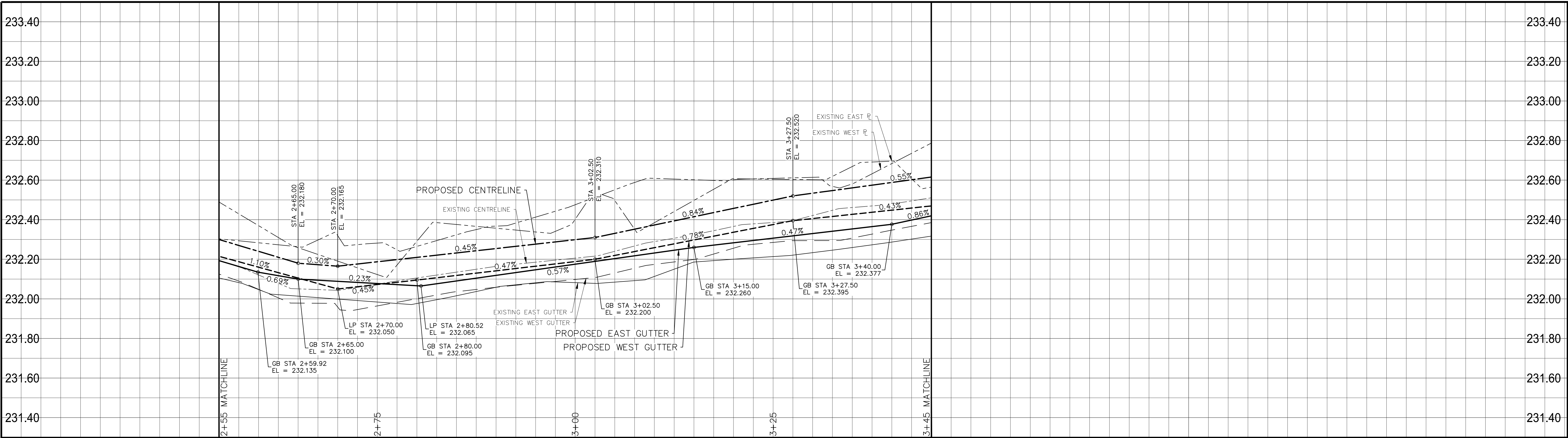


Mar 27, 2025 - 6:00pm
P:\2024\CA0043424.6934 - CA-25-R-04 Local Streets\02 Drawings\03_Works_Dwg_CAO043424.6934_CA_25-R-04_Morningside_Plan&Profile.dwg -tab:230-2025_Drawing_CAO043424.6934-28-R0

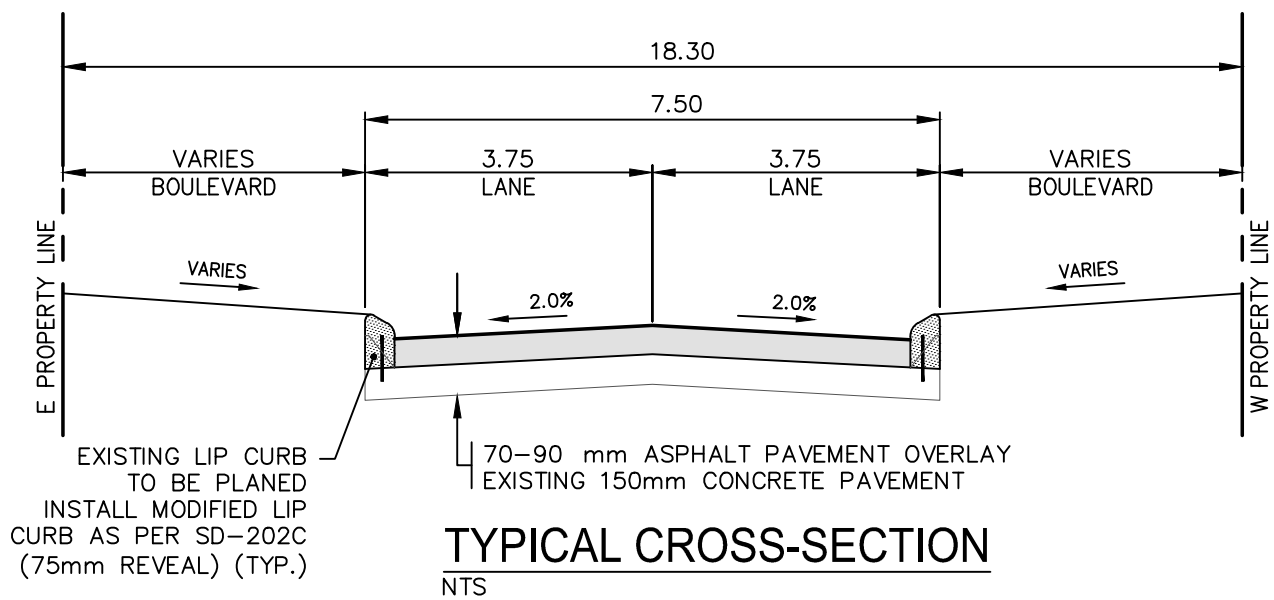
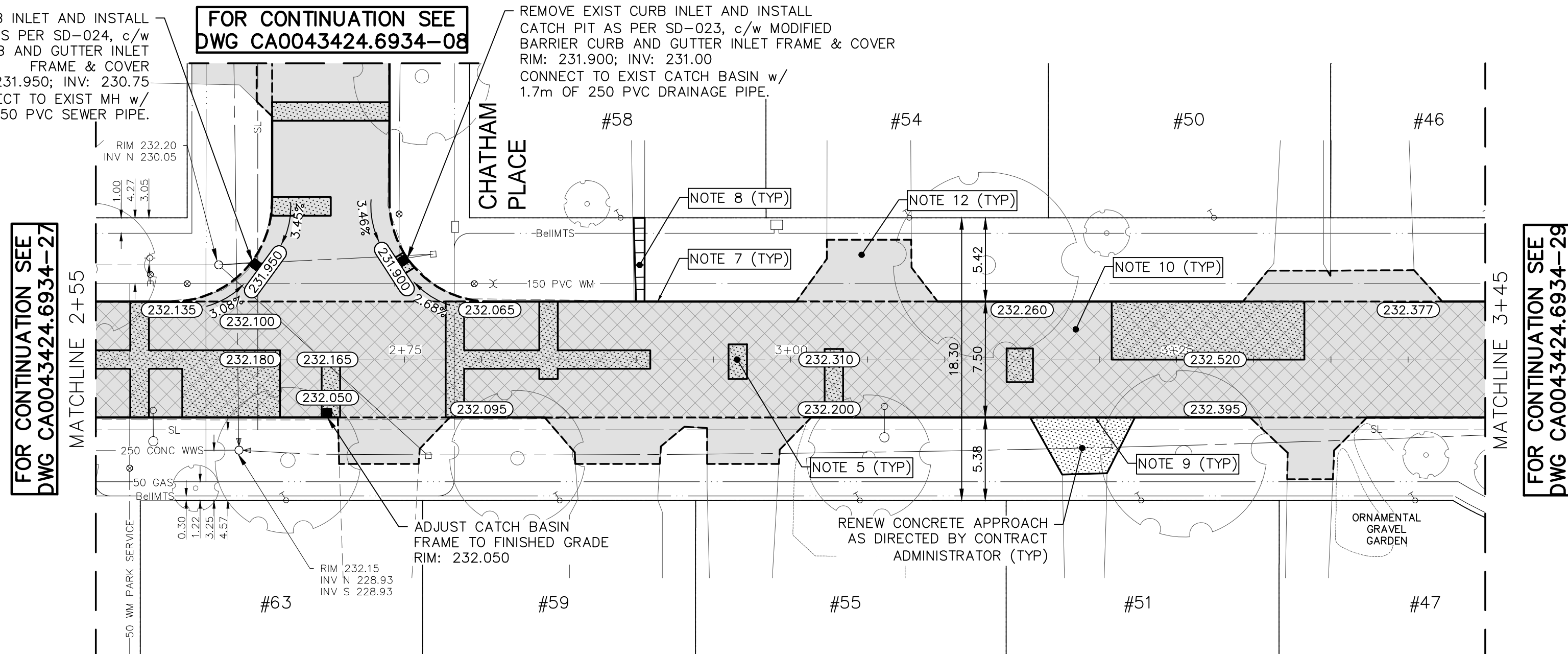


MORNINGSIDE DRIVE

REMOVE EXIST CURB INLET AND INSTALL 1200 CATCH BASIN AS PER SD-024, c/w MODIFIED BARRIER CURB AND GUTTER INLET FRAME & COVER
RIM: 231.950; INV: 230.75
CONNECT TO EXIST MH w/ 2.1m OF 250 PVC SEWER PIPE.

FOR CONTINUATION SEE DWG CA0043424.6934-08

REMOVE EXIST CURB INLET AND INSTALL CATCH PIT AS PER SD-023, c/w MODIFIED BARRIER CURB AND GUTTER INLET FRAME & COVER
RIM: 231.900; INV: 231.00
CONNECT TO EXIST CATCH BASIN w/ 1.7m OF 250 PVC DRAINAGE PIPE.



NOTES:

- ALL WORK AND MATERIALS TO BE IN ACCORDANCE WITH THE LATEST REVISION OF THE CITY OF WINNIPEG STANDARD CONSTRUCTION SPECIFICATIONS.
- CONTRACTOR TO CONFIRM THE LOCATION OF ALL UTILITIES/SERVICES IN THE FIELD PRIOR TO CONSTRUCTION.
- ALL ROADWAY DIMENSIONS SHOWN ARE TO BACK OF CURB.
- EXISTING ASPHALT TO BE PLANED AS SHOWN OR AS DIRECTED BY CONTRACT ADMINISTRATOR.
- 150mm PARTIAL CONCRETE SLAB PATCHES SHOWN ARE ONLY A REPRESENTATIVE APPROXIMATION OF THE TENDERED QUANTITIES.
- EXISTING SIDEWALK TO BE RENEWED AS PER SD-228A AND AS DIRECTED BY CONTRACT ADMINISTRATOR.
- PLANE EXISTING CURB AND INSTALL MODIFIED LIP CURB AS PER SD-202C AND AS DIRECTED BY CONTRACT ADMINISTRATOR.
- ALL PRIVATE WALKWAYS TO BE ADJUSTED TO NEW SIDEWALK OR TOP OF CURB ELEVATION, AS DIRECTED BY THE CONTRACT ADMINISTRATOR.
- EXISTING LIP CURB AT PRIVATE APPROACHES TO BE RENEWED AS DIRECTED BY CONTRACT ADMINISTRATOR.
- PAVEMENT REPAIR FABRIC TO BE INSTALLED AS SHOWN OR AS DIRECTED BY CONTRACT ADMINISTRATOR.
- MODIFIED BARRIER CURB TO BE CONSTRUCTED AT ALL INTERSECTION RADII AND ALLEY RADII.
- OVERLAY EXISTING CONCRETE AND ASPHALT RESIDENTIAL APPROACHES AS DIRECTED BY CONTRACT ADMINISTRATOR.
- CONTRACTORS TO TAKE PRECAUTIONARY STEPS TO PROTECT EXISTING TREES WITHIN THE LIMITS OF CONSTRUCTION FROM DAMAGE FROM CONSTRUCTION ACTIVITIES AS OUTLINED IN THE SPECIFICATIONS.
- LAMP STANDARDS, HYDRO POLES, AND ANCHORS THAT REQUIRE TEMPORARY SUPPORT, REMOVAL OR REPLACEMENT, TO BE DONE SO AT THE EXPENSE OF THE CONTRACTOR AS NECESSARY.
- ALL BOULEVARDS TO BE SODDED UNLESS OTHERWISE NOTED.
- ADJUST ALL WATER VALVES, HYDRANTS, MANHOLES, AND CATCH BASINS IN WORK AREA TO GRADE.

---	WATER MAIN	---	⊗	VALVE	---	---	EDGE OF SIDEWALK	---
---	LAND DRAINAGE SEWER	---	⊗	CURB STOP	---	---	EDGE OF ASPHALT	---
---	WASTE WATER SEWER	---	---	HYDRO POLE & LIGHT STANDARD	---	---	EDGE OF CONCRETE	---
---	HYDRO	---	⊗	LIGHT STANDARD OR TRAFFIC SIGNAL	---	---	MODIFIED BARRIER CURB	---
---	GAS	---	⊗	HYDRO POLE / ANCHOR	---	---	BARRIER CURB	---
---	COMMUNICATIONS	---	⊗	FENCE	---	---	BARRIER CURB AND GUTTER	---
---	SIGNALS	---	⊗	PROPERTY LINE	---	---	PAVING STONE	---
○	MANHOLE	●	⊗	TEST HOLE / PAVEMENT CORE	---	---	CONCRETE SIDEWALK	---
□	CATCH BASIN/CATCH PIT	■	⊗	ELEVATIONS	(231.000)	---	CONCRETE SLAB	---
△	CURB INLET	▽	⊗	CURB RAMP	---	---	ASPHALT	---
◇	UTILITIES ADJUSTED	△ ○	⊗	DETECTABLE WARNING SURFACE TILE	---	---	MILLED SURFACE	---
◇	HYDRANT	◆	⊗	---	---	---	PAVEMENT REPAIR FABRIC	---
EXISTING	LEGEND-PLAN	PROPOSED	EXISTING	LEGEND-PLAN	PROPOSED	EXISTING	LEGEND-PLAN	PROPOSED

LOCATIONS APPROVED UNDERGROUND STRUCTURES

SIGNED BY: SUPV UG STRUCTURES

DATE

LOCATION OF UNDERGROUND STRUCTURES AS SHOWN ARE BASED ON THE BEST INFORMATION AVAILABLE BUT NO GUARANTEE IS GIVEN THAT ALL EXISTING UTILITIES ARE SHOWN OR THAT THE GIVEN LOCATIONS ARE EXACT CONFIRMATION OF EXISTENCE AND EXACT LOCATION OF ALL SERVICES MUST BE OBTAINED FROM THE INDIVIDUAL UTILITIES BEFORE PROCEEDING

G.B.M. TOH AT 236 ROCHESTER AVE
ELEV. 233.320

7
6
5
4
3
2
1
0

ISSUED FOR TENDER

NO. REVISIONS

DATE BY

DESIGNED BY R.H./G.Z.
CHECKED BY R.H.
DRAWN BY K.C./W.D.
APPROVED BY S.M.

HOR. SCALE 1:250
VERTICAL 1:10

RELEASED FOR CONSTRUCTION

DATE JANUARY 2025

WSP Canada Inc.
1600 Buffalo Place
Winnipeg, MB R3T 6B8
t. 204.477.6650
f. 204.474.2864
www.wsp.com

ENGINEER'S SEAL

CONSULTANT ACAD DWG. NO.
CA0043424.6934-28

FOR TENDER PURPOSES ONLY
NOT FOR CONSTRUCTION

Winnipeg

THE CITY OF WINNIPEG
PUBLIC WORKS DEPARTMENT
ENGINEERING SERVICES DIVISION

2025 LOCAL STREET RENEWALS

MORNINGSIDE DRIVE

MAJOR REHABILITATION
STA. 2+55 TO STA. 3+45

METRIC

WHOLE NUMBERS INDICATE MILLIMETRES
DECIMALIZED NUMBERS INDICATE METRES

ENGINEERS
GEOSCIENTISTS
MANITOBA
Certificate of Authorization
WSP Canada Inc.
No. 5750

CITY DRAWING NUMBER

SHEET 28 OF 47

TENDER NO.
230-2025