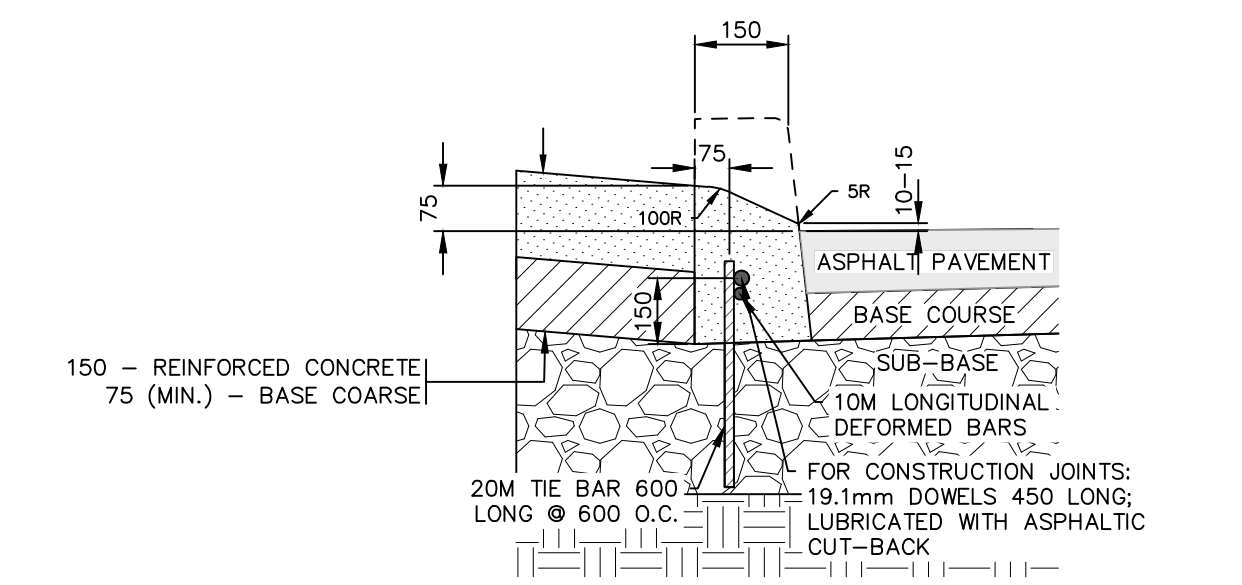
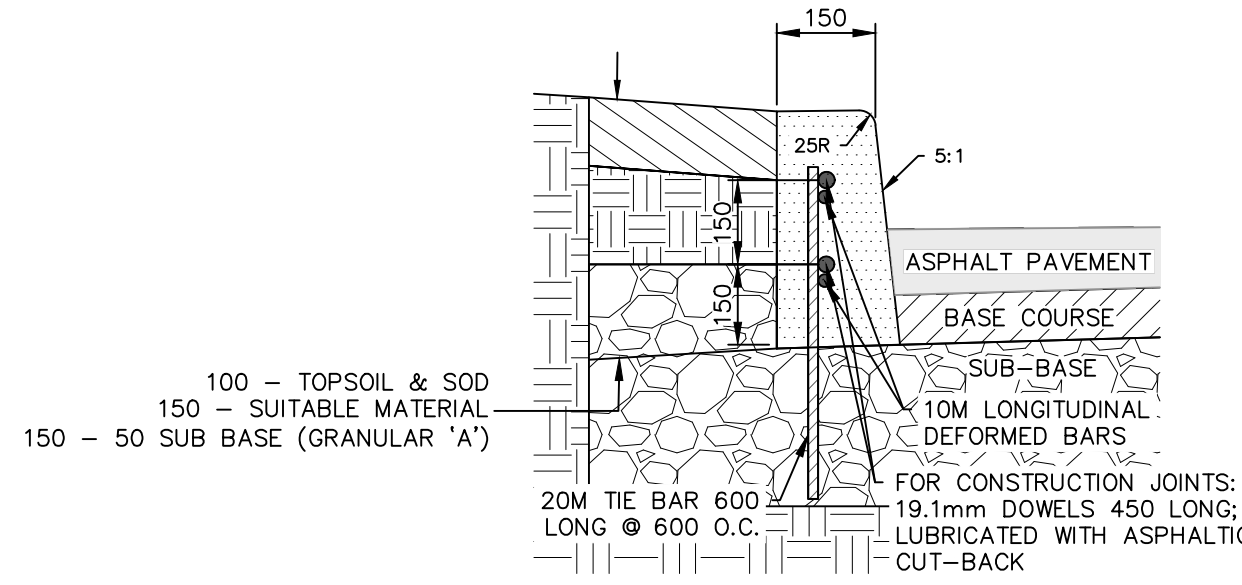
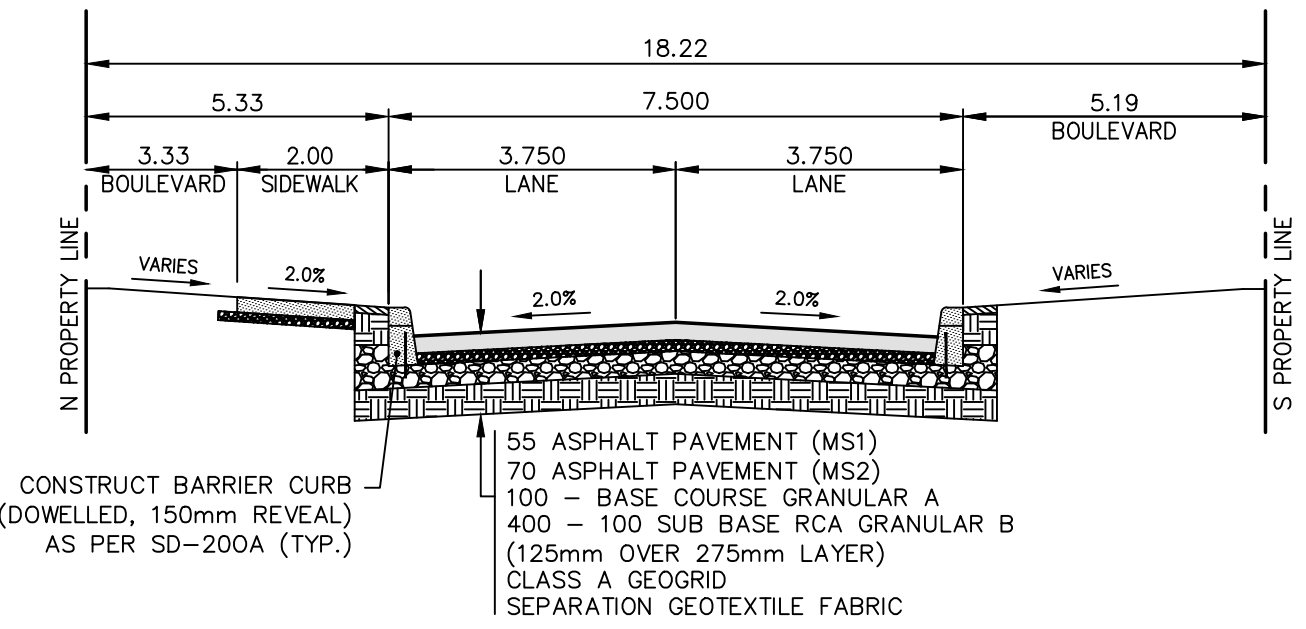
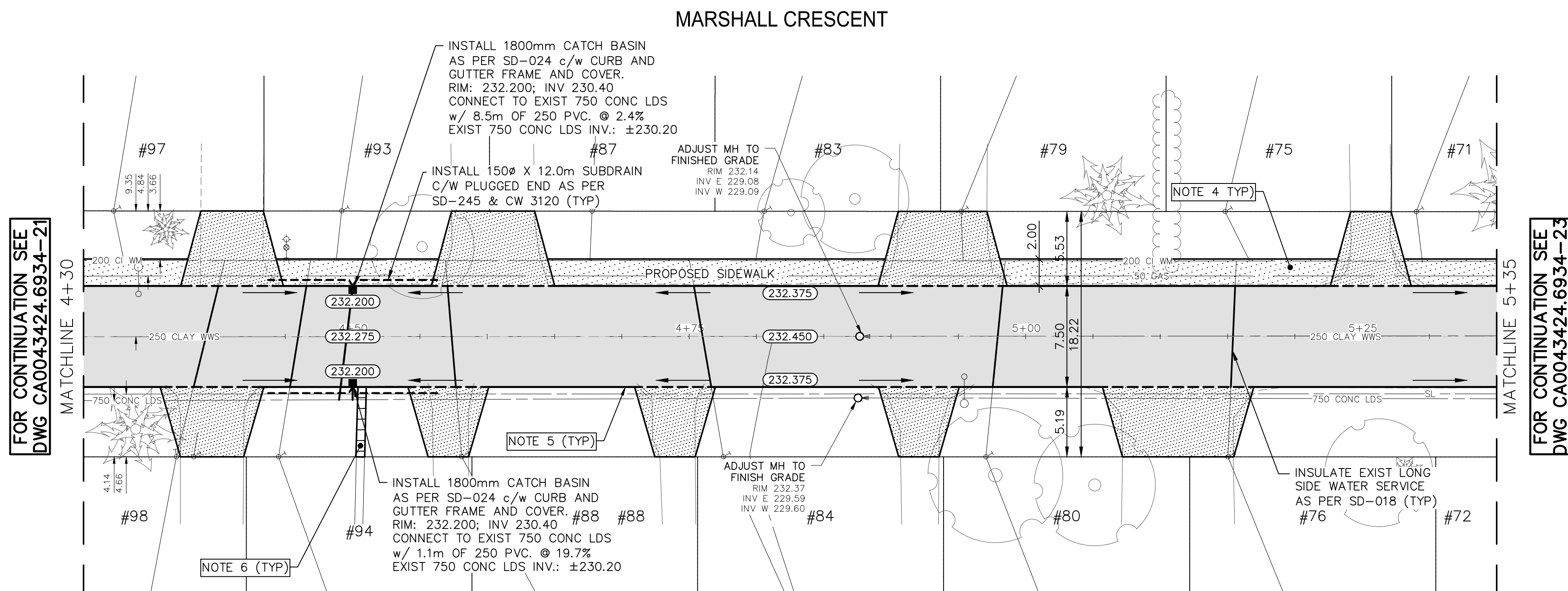
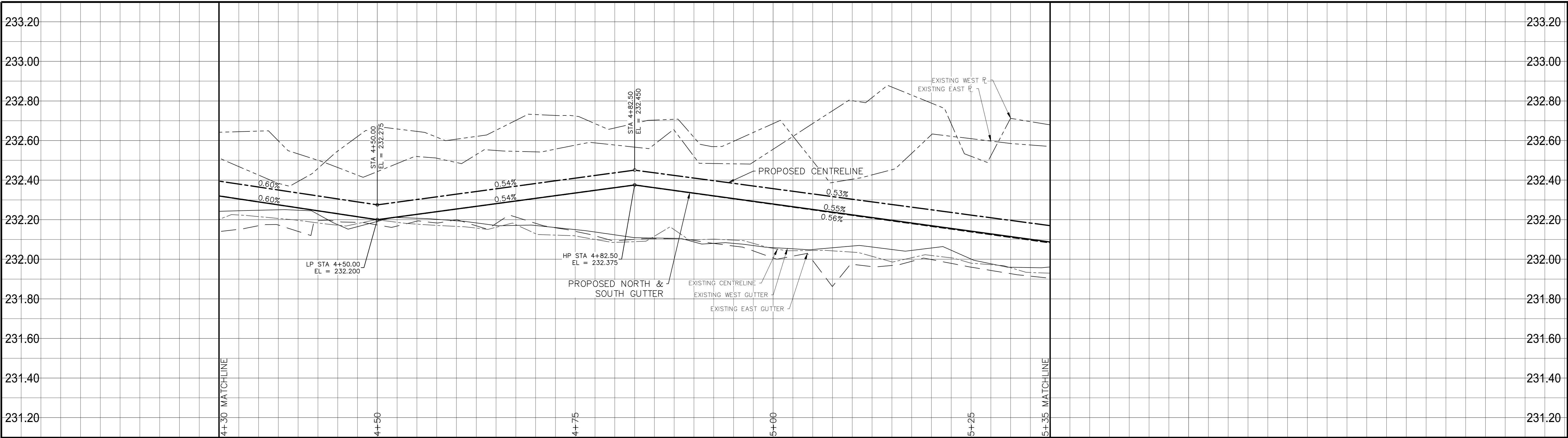


Mar 27, 2025 — 6:12pm
P:\2024\CA0043424_25-Work_Dwg_CAO043424_6934-CA_25-R-04_Marshall_Plan&Profile.dwg — tab: 230 - 2025_Drawing_CAO043424_6934-22-RO



- NOTES:
1. ALL WORK AND MATERIALS TO BE IN ACCORDANCE WITH THE LATEST REVISION OF THE CITY OF WINNIPEG STANDARD CONSTRUCTION SPECIFICATIONS.
 2. CONTRACTOR TO CONFIRM THE LOCATION OF ALL UTILITIES/SERVICES IN THE FIELD PRIOR TO CONSTRUCTION.
 3. ALL ROADWAY DIMENSIONS SHOWN ARE TO BACK OF CURB.
 4. SIDEWALK TO BE CONSTRUCTED AS PER SD-228A AND AS DIRECTED BY CONTRACT ADMINISTRATOR.
 5. CURB TO BE CONSTRUCTED AS PER SD-200A AND AS DIRECTED BY CONTRACT ADMINISTRATOR.
 6. ALL PRIVATE WALKWAYS TO BE ADJUSTED TO NEW SIDEWALK OR TOP OF CURB ELEVATION, AS DIRECTED BY THE CONTRACT ADMINISTRATOR.
 7. LIP CURB AT PRIVATE APPROACHES TO BE CONSTRUCTED AS DIRECTED BY CONTRACT ADMINISTRATOR.
 8. MODIFIED BARRIER CURB TO BE CONSTRUCTED AT ALL INTERSECTION RADII AND ALLEY RADII.
 9. CONSTRUCT REINFORCED CONCRETE RESIDENTIAL APPROACH AS PER SD-237B AND AS DIRECTED BY CONTRACT ADMINISTRATOR.
 10. CONTRACTORS TO TAKE PRECAUTIONARY STEPS TO PROTECT EXISTING TREES WITHIN THE LIMITS OF CONSTRUCTION FROM DAMAGE FROM CONSTRUCTION ACTIVITIES AS OUTLINED IN THE SPECIFICATIONS.
 11. LAMP STANDARDS, HYDRO POLES, AND ANCHORS THAT REQUIRE TEMPORARY SUPPORT, REMOVAL OR REPLACEMENT, TO BE DONE SO AT THE EXPENSE OF THE CONTRACTOR AS NECESSARY.
 12. ALL BOULEVARDS TO BE SODDED UNLESS OTHERWISE NOTED.
 13. ADJUST ALL WATER VALVES, HYDRANTS, MANHOLES, AND CATCH BASINS IN WORK AREA TO GRADE.

---	WATER MAIN	---	⊗	VALVE	---	---	EDGE OF SIDEWALK	---
---	LAND DRAINAGE SEWER	---	⊗	CURB STOP	---	---	EDGE OF ASPHALT	---
---	WASTE WATER SEWER	---	---	HYDRO POLE & LIGHT STANDARD	---	---	EDGE OF CONCRETE	---
---	HYDRO	---	⊗	LIGHT STANDARD OR TRAFFIC SIGNAL	---	---	MODIFIED BARRIER CURB	---
---	GAS	---	⊗	HYDRO POLE / ANCHOR	---	---	BARRIER CURB	---
---	COMMUNICATIONS	---	⊗	FENCE	---	---	BARRIER CURB AND GUTTER	---
---	SIGNALS	---	⊗	PROPERTY LINE	---	---	PAVING STONE	---
○	MANHOLE	●	⊗	TEST HOLE / PAVEMENT CORE	---	---	CONCRETE SIDEWALK	---
□	CATCH BASIN/CATCH PIT	■	⊗	ELEVATIONS	(231.000)	---	CONCRETE SLAB	---
△	CURB INLET	▼	⊗	CURB RAMP	---	---	ASPHALT	---
◇	UTILITIES ADJUSTED	△ □ ○	⊗	DETECTABLE WARNING SURFACE TILE	---	---	MILLED SURFACE	---
◇	HYDRANT	◆	⊗	LEGEND-PLAN	---	---	PAVEMENT REPAIR FABRIC	---
---	EXISTING	---	---	LEGEND-PLAN	---	---	---	---

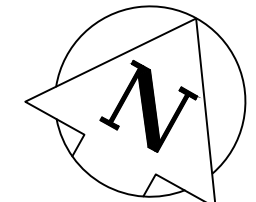
LOCATIONS APPROVED UNDERGROUND STRUCTURES	
SIGNED BY:	DATE
SUPV UG STRUCTURES	
LOCATION OF UNDERGROUND STRUCTURES AS SHOWN ARE BASED ON THE BEST INFORMATION AVAILABLE BUT NO GUARANTEE IS GIVEN THAT ALL EXISTING UTILITIES ARE SHOWN OR THAT THE GIVEN LOCATIONS ARE EXACT CONFIRMATION OF EXISTENCE AND EXACT LOCATION OF ALL SERVICES MUST BE OBTAINED FROM THE INDIVIDUAL UTILITIES BEFORE PROCEEDING	

G.B.M. ELEV.	TOH AT SW CORNER OF MARSHALL CR AND WALLER AVE INTERSECTION
233.193	
H	
G	
F	
E	
D	
C	
B	
A	ISSUED FOR TENDER
NO.	REVISIONS

wsp	
DESIGNED BY	R.H./G.Z.
DRAWN BY	K.C./W.D.
HOR. SCALE	1:250
VERTICAL	1:10
DATE	JANUARY 2025
DATE	

WSP Canada Inc. 1600 Buffalo Place Winnipeg, MB R3T 6B8 t. 204.477.6650 f. 204.474.2864 www.wsp.com	ENGINEER'S SEAL
CONSULTANT ACAD DWG. NO.	CA0043424.6934-22

THE CITY OF WINNIPEG PUBLIC WORKS DEPARTMENT ENGINEERING SERVICES DIVISION	
2025 LOCAL STREET RENEWALS	
MARSHALL CRESCENT	
ASPHALT RECONSTRUCTION STA. 4+30 TO STA. 5+35	
TENDER NO. 230-2025	



METRIC
WHOLE NUMBERS INDICATE MILLIMETRES
DECIMALIZED NUMBERS INDICATE METRES

**ENGINEERS
GEOSCIENTISTS
MANITOBA**
Certificate of Authorization
WSP Canada Inc.
No. 5750

FOR TENDER PURPOSES ONLY
NOT FOR CONSTRUCTION