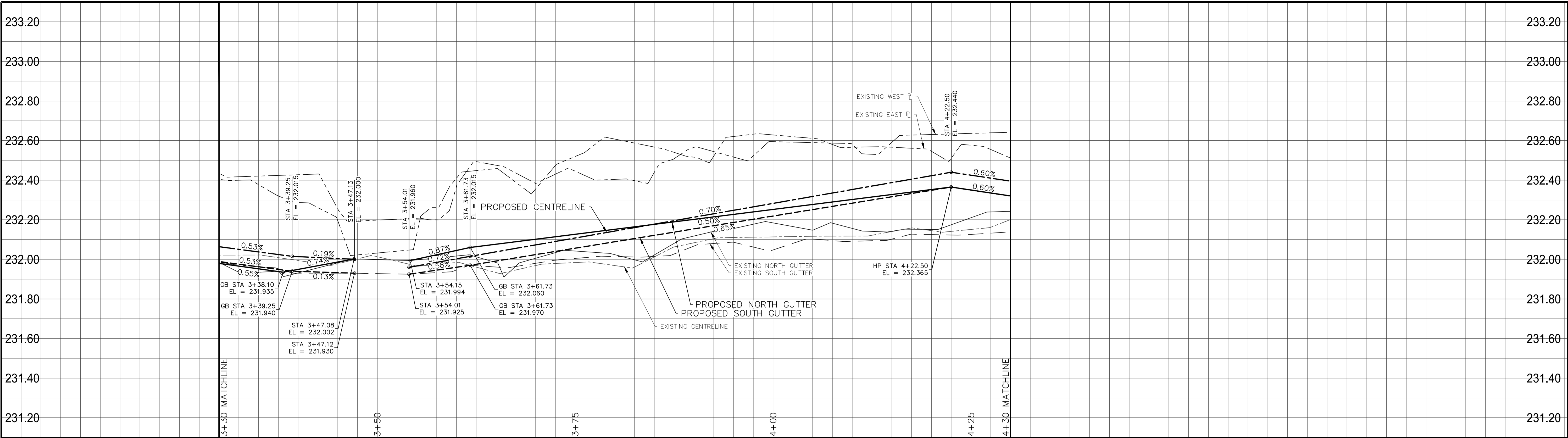
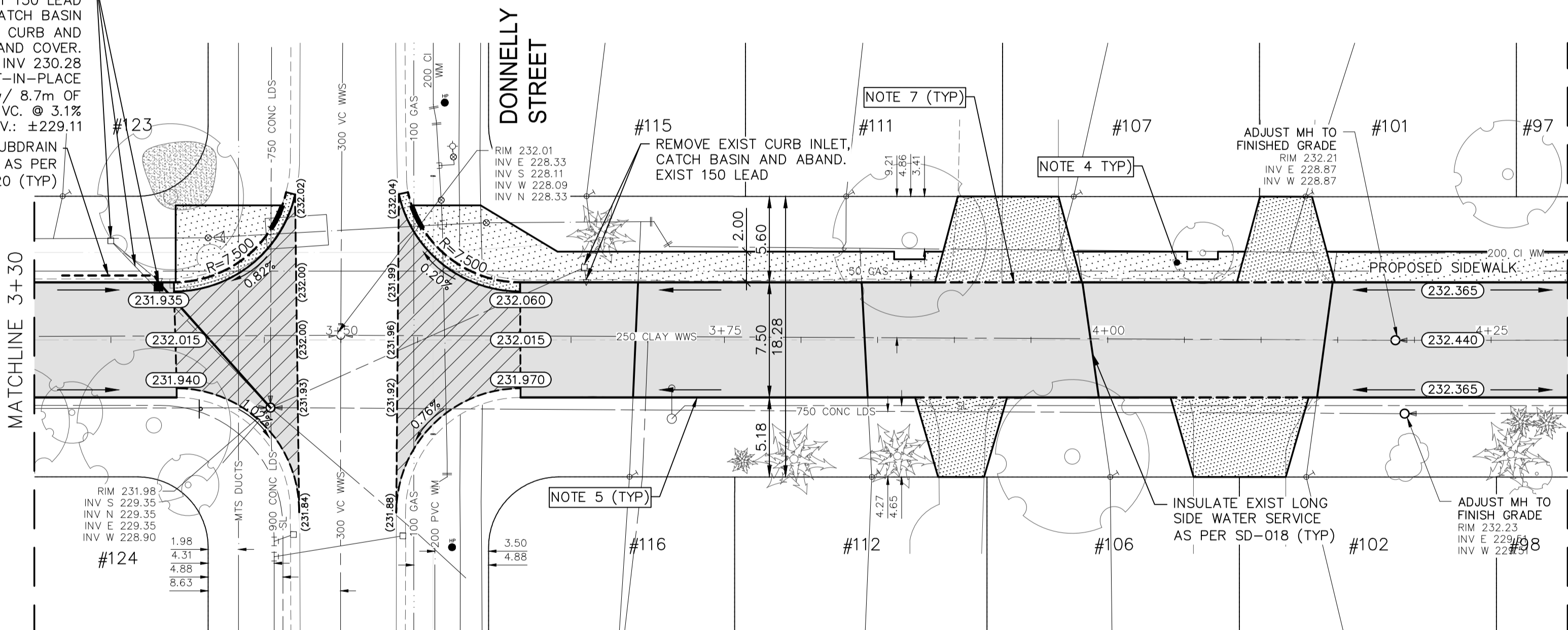


Mar 27, 2025 — 6:11pm
P:\2024\CA0043424.6934 - CA-25-R-04 Local Streets\02 Drawings\03 Work_Dwg_CAO043424.6934_CA_25-R-04_Marshall_Plan&Profile.dwg - tab: 230-2025_Drawing_CAO043424.6934-21-R0



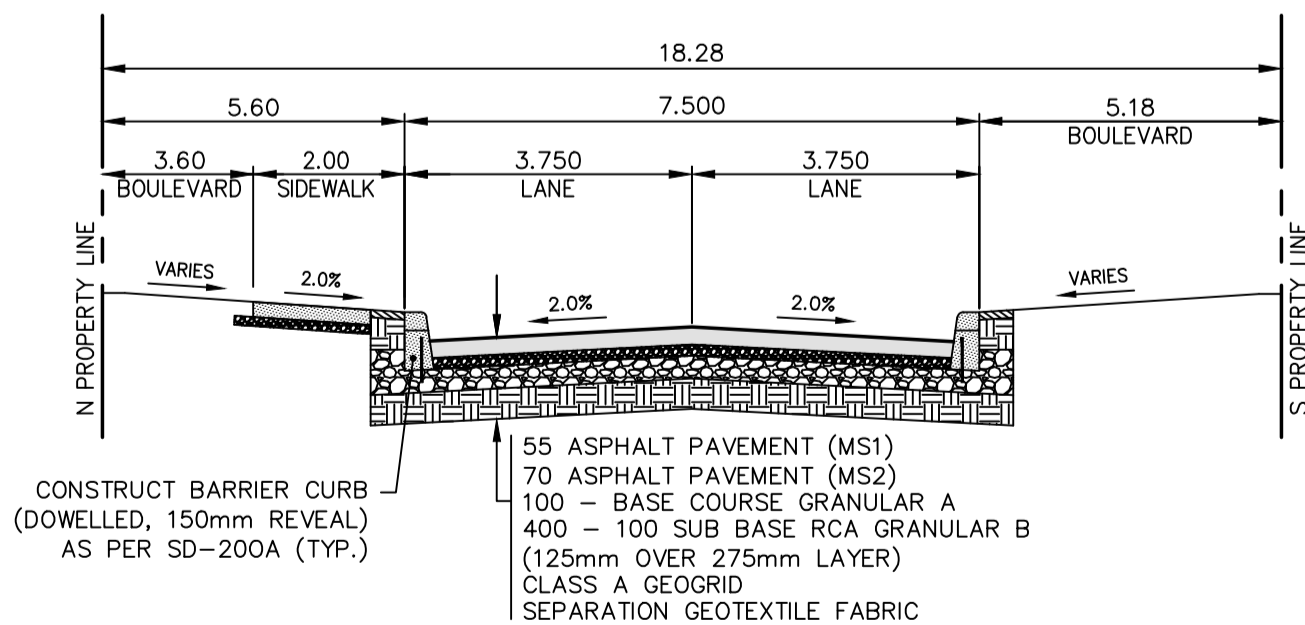
REMOVE EXIST CURB INLET, CATCH BASIN AND ABAND. EXIST 150 LEAD
INSTALL 1800mm CATCH BASIN
AS PER SD-024 c/w CURB AND GUTTER FRAME AND COVER.
RIM: 232.075; INV 230.28
CONNECT TO EXIST CAST-IN-PLACE MANHOLE w/ 8.7m OF 250 PVC. @ 3.1%
EXIST MANHOLE INV.: ±229.11
INSTALL 150Ø X 6.0m SUBDRAIN C/W PLUGGED END AS PER SD-245 & CW 3120 (TYP)

FOR CONTINUATION SEE
DWG CA0043424.6934-20
MATCHLINE 3+30

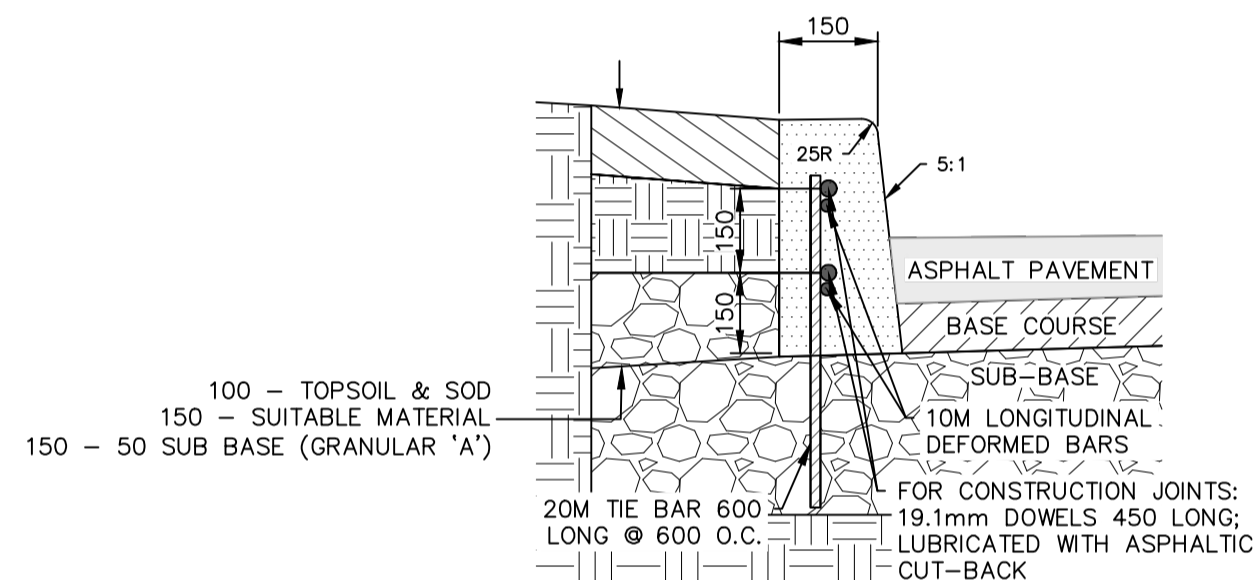


FOR CONTINUATION SEE
DWG CA0043424.6934-22
MATCHLINE 4+30

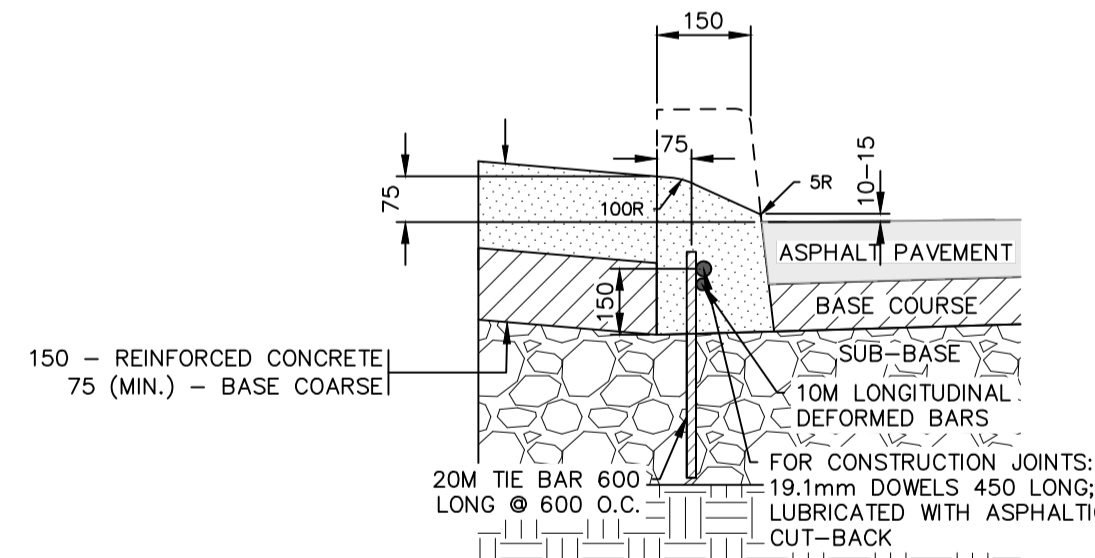
- NOTES:
- ALL WORK AND MATERIALS TO BE IN ACCORDANCE WITH THE LATEST REVISION OF THE CITY OF WINNIPEG STANDARD CONSTRUCTION SPECIFICATIONS.
 - CONTRACTOR TO CONFIRM THE LOCATION OF ALL UTILITIES/SERVICES IN THE FIELD PRIOR TO CONSTRUCTION.
 - ALL ROADWAY DIMENSIONS SHOWN ARE TO BACK OF CURB.
 - SIDEWALK TO BE CONSTRUCTED AS PER SD-228A AND AS DIRECTED BY CONTRACT ADMINISTRATOR.
 - CURB TO BE CONSTRUCTED AS PER SD-200A AND AS DIRECTED BY CONTRACT ADMINISTRATOR.
 - ALL PRIVATE WALKWAYS TO BE ADJUSTED TO NEW SIDEWALK OR TOP OF CURB ELEVATION, AS DIRECTED BY THE CONTRACT ADMINISTRATOR.
 - UP CURB AT PRIVATE APPROACHES TO BE CONSTRUCTED AS DIRECTED BY CONTRACT ADMINISTRATOR.
 - MODIFIED BARRIER CURB TO BE CONSTRUCTED AT ALL INTERSECTION RADII AND ALLEY RADII.
 - CONSTRUCT REINFORCED CONCRETE RESIDENTIAL APPROACH AS PER SD-237B AND AS DIRECTED BY CONTRACT ADMINISTRATOR.
 - CONTRACTORS TO TAKE PRECAUTIONARY STEPS TO PROTECT EXISTING TREES WITHIN THE LIMITS OF CONSTRUCTION FROM CONSTRUCTION ACTIVITIES AS OUTLINED IN THE SPECIFICATIONS.
 - LAMP STANDARDS, HYDRO POLES, AND ANCHORS THAT REQUIRE TEMPORARY SUPPORT, REMOVAL OR REPLACEMENT, TO BE DONE SO AT THE EXPENSE OF THE CONTRACTOR AS NECESSARY.
 - ALL BOULEVARDS TO BE SODDED UNLESS OTHERWISE NOTED.
 - ADJUST ALL WATER VALVES, HYDRANTS, MANHOLES, AND CATCH BASINS IN WORK AREA TO GRADE.



TYPICAL CROSS-SECTION
NTS



DETAIL 'A' - DOWELLED
BARRIER CURB (SD-200A)
NTS



DETAIL 'B' - LIP CURB
WITH APPROACH (SD-202B)
NTS

METRIC

WHOLE NUMBERS INDICATE MILLIMETRES
DECIMALIZED NUMBERS INDICATE METRES

**ENGINEERS
GEOSCIENTISTS
MANITOBA**
Certificate of Authorization
WSP Canada Inc.
No. 5750

FOR TENDER PURPOSES ONLY
NOT FOR CONSTRUCTION

---	WATER MAIN	---	⊗	VALVE	---	---	EDGE OF SIDEWALK	---
---	LAND DRAINAGE SEWER	---	⊗	CURB STOP	---	---	EDGE OF ASPHALT	---
---	WASTE WATER SEWER	---	⊗	HYDRO POLE & LIGHT STANDARD	---	---	EDGE OF CONCRETE	---
---	HYDRO	---	⊗	LIGHT STANDARD OR TRAFFIC SIGNAL	---	---	MODIFIED BARRIER CURB	---
---	GAS	---	⊗	HYDRO POLE / ANCHOR	---	---	BARRIER CURB	---
---	COMMUNICATIONS	---	⊗	FENCE	---	---	BARRIER CURB AND GUTTER	---
---	SIGNALS	---	⊗	PROPERTY LINE	---	---	PAVING STONE	---
○	MANHOLE	●	⊗	TEST HOLE / PAVEMENT CORE	---	---	CONCRETE SIDEWALK	---
□	CATCH BASIN/CATCH PIT	■	⊗	ELEVATIONS	(231.00)	(231.000)	CONCRETE SLAB	---
△	CURB INLET	▼	⊗	CURB RAMP	---	---	ASPHALT	---
◇	UTILITIES ADJUSTED	△ ○	⊗	DETECTABLE WARNING SURFACE TILE	---	---	MILLED SURFACE	---
◇	HYDRANT	◆	⊗	---	---	---	PAVEMENT REPAIR FABRIC	---
EXISTING	LEGEND-PLAN	PROPOSED	EXISTING	LEGEND-PLAN	PROPOSED	EXISTING	LEGEND-PLAN	PROPOSED

LOCATIONS APPROVED UNDERGROUND STRUCTURES

SIGNED BY: _____
SUPPLY UNDER STRUCTURES

LOCATION OF UNDERGROUND STRUCTURES AS SHOWN ARE BASED ON THE BEST INFORMATION AVAILABLE BUT NO GUARANTEE IS GIVEN THAT ALL EXISTING UTILITIES ARE SHOWN OR THAT THE GIVEN LOCATIONS ARE EXACT CONFIRMATION OF EXISTENCE AND EXACT LOCATION OF ALL SERVICES MUST BE OBTAINED FROM THE INDIVIDUAL UTILITIES BEFORE PROCEEDING

G.B.M. TOH AT SW CORNER OF MARSHALL CR AND WALLER AVE INTERSECTION
ELEV. 233.193

DATE: _____

NO. _____
REVISIONS _____

wsp

DESIGNED BY: R.H./G.Z.
DRAWN BY: K.C./W.D.

WSP Canada Inc.
1600 Buffalo Place
Winnipeg, MB R3T 6B8
t. 204.477.6650
f. 204.474.2864
www.wsp.com

CHECKED BY: R.H.
APPROVED BY: S.M.
HORIZ. SCALE: 1:250
VERTICAL: 1:10
DATE: JANUARY 2025

ENGINEER'S SEAL

CONSULTANT ACAD DWG. NO.
CA0043424.6934-21

Winnipeg

THE CITY OF WINNIPEG
PUBLIC WORKS DEPARTMENT
ENGINEERING SERVICES DIVISION

2025 LOCAL STREET RENEWALS

MARSHALL CRESCENT

ASPHALT RECONSTRUCTION
STA. 3+30 TO STA. 4+30

CITY DRAWING NUMBER

SHEET 21 OF 47

TENDER NO.
230-2025