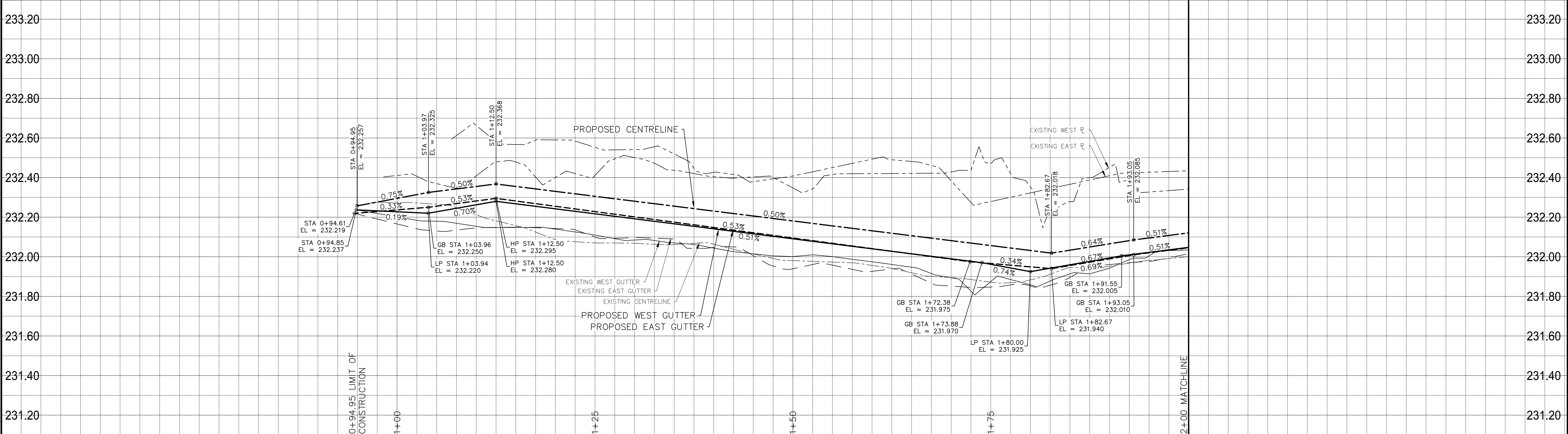
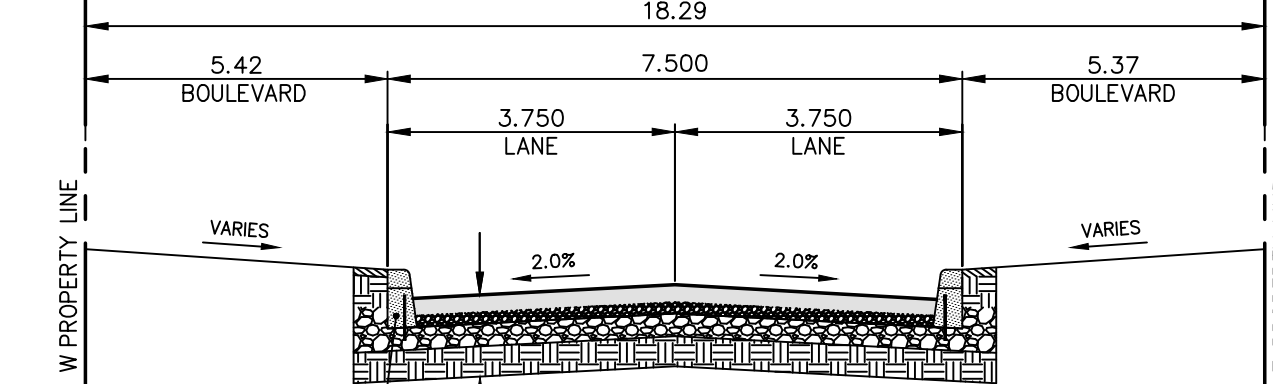
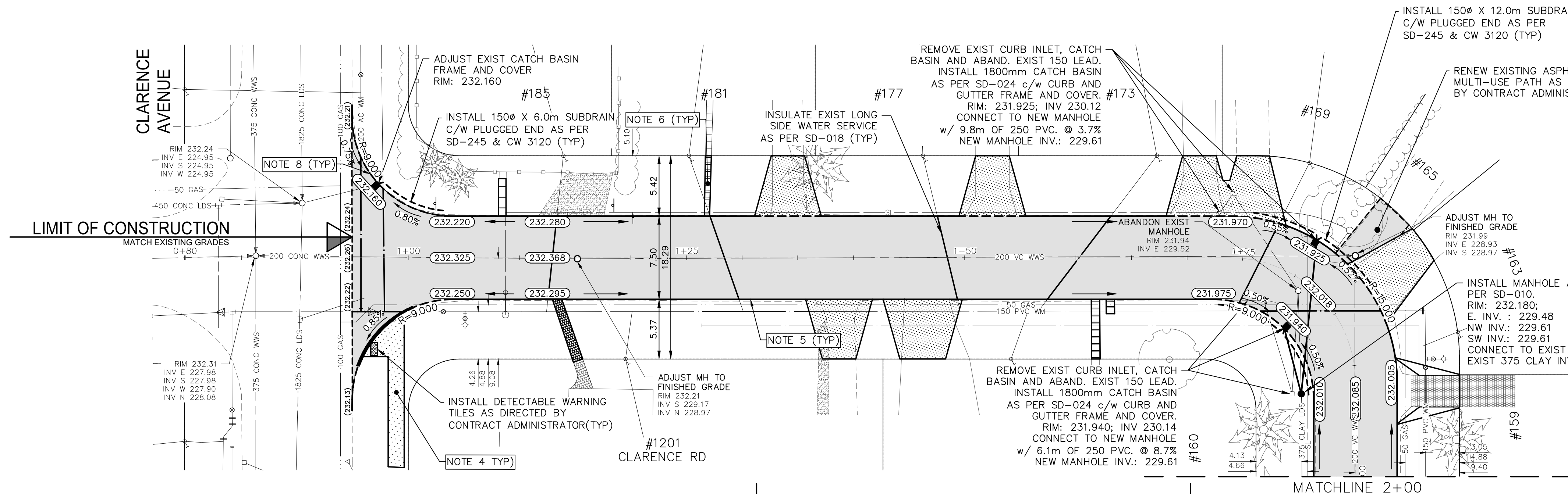


Mar 27, 2025 — 6:08pm  
P:\2024\CA0043424.6934 - CA-25-R-04 Local Streets\02 Drawings\03 Work\_Dwg CA0043424.6934\_CA\_25-R-04\_Marshall\_Plan&Profile.dwg - tab: 230 - 2025\_Drawing\_CAO043424.6934-19-R0



### MARSHALL CRESCENT



### TYPICAL CROSS-SECTION

NTS

- NOTES:
1. ALL WORK AND MATERIALS TO BE IN ACCORDANCE WITH THE LATEST REVISION OF THE CITY OF WINNIPEG STANDARD CONSTRUCTION SPECIFICATIONS.
  2. CONTRACTOR TO CONFIRM THE LOCATION OF ALL UTILITIES/SERVICES IN THE FIELD PRIOR TO CONSTRUCTION.
  3. ALL ROADWAY DIMENSIONS SHOWN ARE TO BACK OF CURB.
  4. SIDEWALK TO BE CONSTRUCTED AS PER SD-228A AND AS DIRECTED BY CONTRACT ADMINISTRATOR.
  5. CURB TO BE CONSTRUCTED AS PER SD-200A AND AS DIRECTED BY CONTRACT ADMINISTRATOR.
  6. ALL PRIVATE WALKWAYS TO BE ADJUSTED TO NEW SIDEWALK OR TOP OF CURB ELEVATION, AS DIRECTED BY THE CONTRACT ADMINISTRATOR.
  7. LIP CURB AT PRIVATE APPROACHES TO BE CONSTRUCTED AS DIRECTED BY CONTRACT ADMINISTRATOR.
  8. MODIFIED BARRIER CURB TO BE CONSTRUCTED AT ALL INTERSECTION RADII AND ALLEY RADII.
  9. CONSTRUCT REINFORCED CONCRETE RESIDENTIAL APPROACH AS PER SD-237B AND AS DIRECTED BY CONTRACT ADMINISTRATOR.
  10. CONTRACTORS TO TAKE PRECAUTIONARY STEPS TO PROTECT EXISTING TREES WITHIN THE LIMITS OF CONSTRUCTION FROM DAMAGE FROM CONSTRUCTION ACTIVITIES AS OUTLINED IN THE SPECIFICATIONS.
  11. LAMP STANDARDS, HYDRO POLES, AND ANCHORS THAT REQUIRE TEMPORARY SUPPORT, REMOVAL OR REPLACEMENT, TO BE DONE SO AT THE EXPENSE OF THE CONTRACTOR AS NECESSARY.
  12. ALL BOULEVARDS TO BE SODDED UNLESS OTHERWISE NOTED.
  13. ADJUST ALL WATER VALVES, HYDRANTS, MANHOLES, AND CATCH BASINS IN WORK AREA TO GRADE.

---	WATER MAIN	---	⊗	VALVE	---	EDGE OF SIDEWALK	---
---	LAND DRAINAGE SEWER	---	⊗	CURB STOP	---	EDGE OF ASPHALT	---
---	WASTE WATER SEWER	---	---	HYDRO POLE & LIGHT STANDARD	---	EDGE OF CONCRETE	---
---	HYDRO	---	⊗	LIGHT STANDARD OR TRAFFIC SIGNAL	---	MODIFIED BARRIER CURB	---
---	GAS	---	⊗	HYDRO POLE / ANCHOR	---	BARRIER CURB	---
---	COMMUNICATIONS	---	---	FENCE	---	BARRIER CURB AND GUTTER	---
---	SIGNALS	---	---	PROPERTY LINE	---	PAVING STONE	---
○	MANHOLE	●	⊗	TEST HOLE / PAVEMENT CORE	---	CONCRETE SIDEWALK	---
□	CATCH BASIN/CATCH PIT	■	⊗	ELEVATIONS	(231.000)	CONCRETE SLAB	---
△	CURB INLET	▽	⊗	CURB RAMP	---	ASPHALT	---
◇	UTILITIES ADJUSTED	△ □ ○	⊗	DETECTABLE WARNING SURFACE TILE	---	MILLED SURFACE	---
◇	HYDRANT	◆	⊗	LEGEND-PLAN	---	PAVEMENT REPAIR FABRIC	---
EXISTING	LEGEND-PLAN	PROPOSED	EXISTING	LEGEND-PLAN	PROPOSED	EXISTING	LEGEND-PLAN

LOCATIONS APPROVED UNDERGROUND STRUCTURES	
SIGNED BY:	DATE
SUPV UG STRUCTURES	
LOCATION OF UNDERGROUND STRUCTURES AS SHOWN ARE BASED ON THE BEST INFORMATION AVAILABLE BUT NO GUARANTEE IS GIVEN THAT ALL EXISTING UTILITIES ARE SHOWN OR THAT THE GIVEN LOCATIONS ARE EXACT CONFIRMATION OF EXISTENCE AND EXACT LOCATION OF ALL SERVICES MUST BE OBTAINED FROM THE INDIVIDUAL UTILITIES BEFORE PROCEEDING	

G.B.M. ELEV.	TOH AT SW CORNER OF MARSHALL CR AND WALLER AVE INTERSECTION
233.193	
H	
G	
F	
E	
D	
C	
B	
A	ISSUED FOR TENDER
NO.	REVISIONS
DATE	BY

DESIGNED BY	R.H./G.Z.	CHECKED BY	R.H.
DRAWN BY	K.C./W.D.	APPROVED BY	S.M.
HOR. SCALE	1:250	RELEASED FOR CONSTRUCTION	
VERTICAL	1:10		
DATE	JANUARY 2025	DATE	

WSP Canada Inc.	1600 Buffalo Place	Winnipeg, MB R3T 6B8	t. 204.477.6650	f. 204.474.2864	www.wsp.com
ENGINEER'S SEAL					
CONSULTANT ACAD DWG. NO.	CA0043424.6934-19				

FOR TENDER PURPOSES ONLY  
NOT FOR CONSTRUCTION

### DETAIL 'A' - DOWELLED BARRIER CURB (SD-200A)

NTS

### DETAIL 'B' - LIP CURB WITH APPROACH (SD-202B)

NTS

### METRIC

WHOLE NUMBERS INDICATE MILLIMETRES  
DECIMALIZED NUMBERS INDICATE METRES

**ENGINEERS**  
**GEOSCIENTISTS**  
**MANITOBA**  
Certificate of Authorization  
WSP Canada Inc.  
No. 5750

THE CITY OF WINNIPEG PUBLIC WORKS DEPARTMENT ENGINEERING SERVICES DIVISION	CITY DRAWING NUMBER
2025 LOCAL STREET RENEWALS	SHEET 19 OF 47
MARSHALL CRESCENT	TENDER NO. 230-2025
ASPHALT RECONSTRUCTION STA. 0+94.95 TO STA. 2+00	