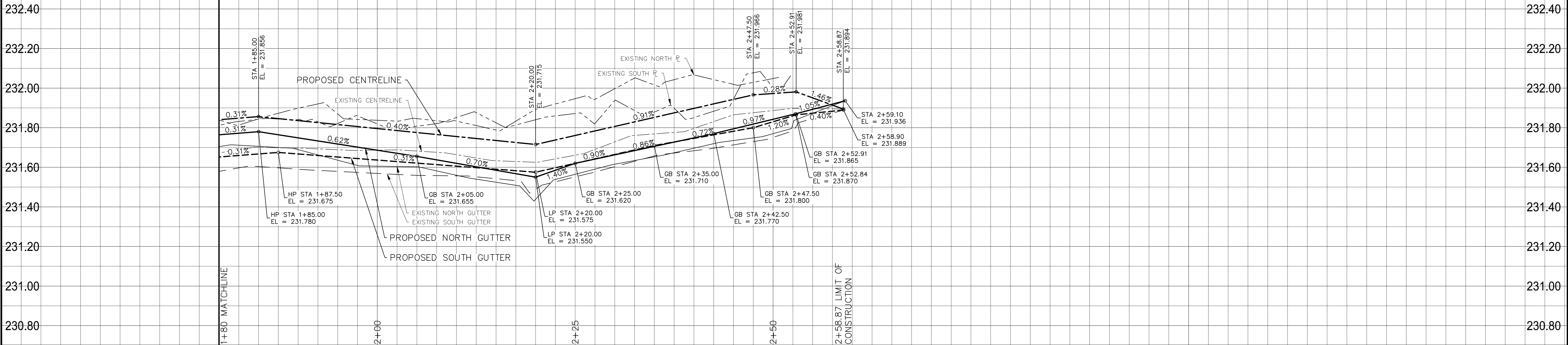
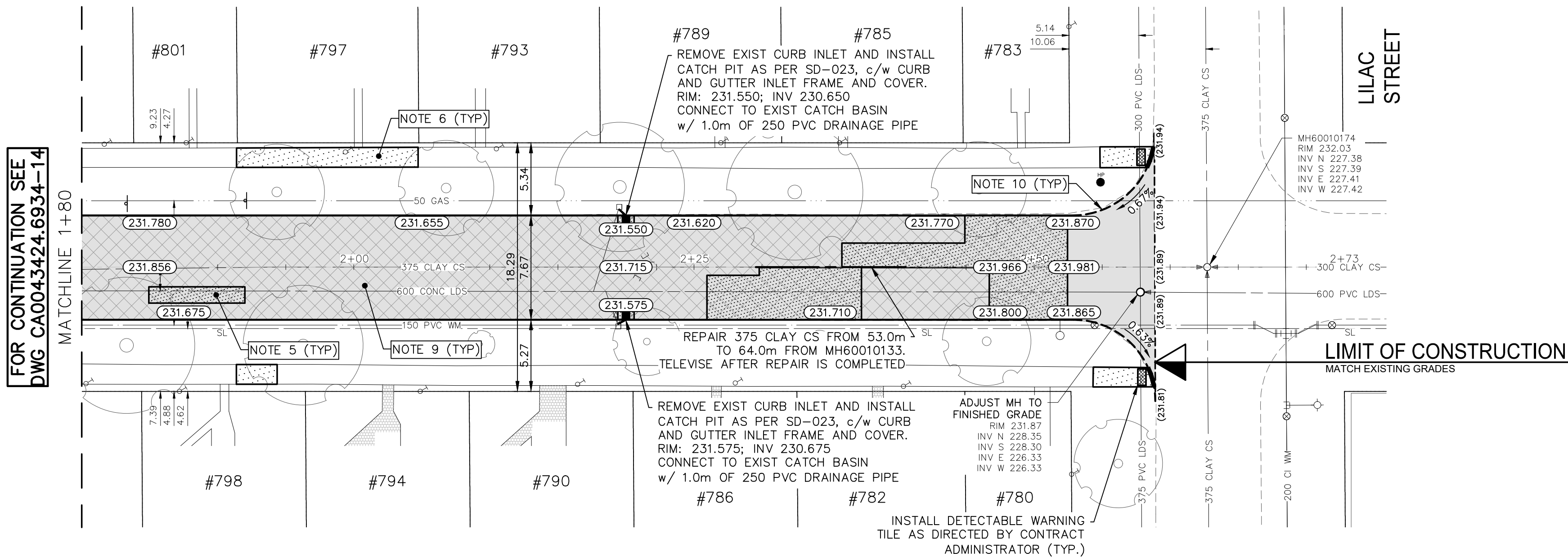


Mar 27, 2025 - 6:10pm
P:\2024\CA0043424.6934 - CA-25-R-04 Local Streets\02 Drawings\03_Work_Dwg\CA0043424.6934_CA_25-R-04_Hector_Ave_E_Plan&Profile.dwg -tab:230-2025_Drawing_CA0043424.6934-15-R0



HECTOR AVENUE



- NOTES:
1. ALL WORK AND MATERIALS TO BE IN ACCORDANCE WITH THE LATEST REVISION OF THE CITY OF WINNIPEG STANDARD CONSTRUCTION SPECIFICATIONS.
 2. CONTRACTOR TO CONFIRM THE LOCATION OF ALL UTILITIES/SERVICES IN THE FIELD PRIOR TO CONSTRUCTION.
 3. ALL ROADWAY DIMENSIONS SHOWN ARE TO BACK OF CURB.
 4. EXISTING ASPHALT TO BE PLANED AS SHOWN OR AS DIRECTED BY CONTRACT ADMINISTRATOR
 5. 150mm PARTIAL CONCRETE SLAB PATCHES SHOWN ARE ONLY A REPRESENTATIVE APPROXIMATION OF THE TENDERED QUANTITIES.
 6. EXISTING SIDEWALK TO BE RENEWED AS PER SD-228A AND AS DIRECTED BY CONTRACT ADMINISTRATOR.
 7. EXISTING BARRIER CURB TO BE RENEWED AS PER SD-206A AND AS DIRECTED BY CONTRACT ADMINISTRATOR.
 8. ALL PRIVATE WALKWAYS TO BE ADJUSTED TO NEW SIDEWALK OR TOP OF CURB ELEVATION, AS DIRECTED BY THE CONTRACT ADMINISTRATOR.
 9. PAVEMENT REPAIR FABRIC TO BE INSTALLED AS SHOWN OR AS DIRECTED BY CONTRACT ADMINISTRATOR.
 10. MODIFIED BARRIER CURB TO BE CONSTRUCTED AT ALL INTERSECTION RADI AND ALLEY RADI.
 11. CONTRACTORS TO TAKE PRECAUTIONARY STEPS TO PROTECT EXISTING TREES WITHIN THE LIMITS OF CONSTRUCTION FROM DAMAGE FROM CONSTRUCTION ACTIVITIES AS OUTLINED IN THE SPECIFICATIONS.
 12. LAMP STANDARDS, HYDRO POLES, AND ANCHORS THAT REQUIRE TEMPORARY SUPPORT, REMOVAL OR REPLACEMENT, TO BE DONE SO AT THE EXPENSE OF THE CONTRACTOR AS NECESSARY.
 13. ALL BOULEVARDS TO BE SODDED UNLESS OTHERWISE NOTED.
 14. ADJUST ALL WATER VALVES, HYDRANTS, MANHOLES, AND CATCH BASINS IN WORK AREA TO GRADE.

---	WATER MAIN	---	⊗	---	VALVE	---	---
---	LAND DRAINAGE SEWER	---	⊗	---	CURB STOP	---	---
---	WASTE WATER SEWER	---	---	---	HYDRO POLE & LIGHT STANDARD	---	---
---	HYDRO	---	⊗	---	LIGHT STANDARD OR TRAFFIC SIGNAL	---	---
---	GAS	---	⊗	---	HYDRO POLE / ANCHOR	---	---
---	COMMUNICATIONS	---	⊗	---	FENCE	---	---
---	SIGNALS	---	⊗	---	PROPERTY LINE	---	---
○	MANHOLE	●	⊗	---	IRON BAR	---	---
□	CATCH BASIN/CATCH PIT	■	⊗	---	TEST HOLE / PAVEMENT CORE	---	---
△	CURB INLET	▽	⊗	---	ELEVATIONS	(231.000)	---
---	UTILITIES ADJUSTED	△ □ ○	---	---	CURB RAMP	---	---
◇	HYDRANT	◆	---	---	DETECTABLE WARNING SURFACE TILE	---	---
EXISTING	LEGEND-PLAN	PROPOSED	EXISTING	LEGEND-PLAN	PROPOSED	EXISTING	---

LOCATIONS APPROVED UNDERGROUND STRUCTURES

SIGNED BY: SUPV UG STRUCTURES DATE:

LOCATION OF UNDERGROUND STRUCTURES AS SHOWN ARE BASED ON THE BEST INFORMATION AVAILABLE BUT NO GUARANTEE IS GIVEN THAT ALL EXISTING UTILITIES ARE SHOWN OR THAT THE GIVEN LOCATIONS ARE EXACT CONFIRMATION OF EXISTENCE AND EXACT LOCATION OF ALL SERVICES MUST BE OBTAINED FROM THE INDIVIDUAL UTILITIES BEFORE PROCEEDING

G.B.A. TOH AT BE CORNER OF HECTOR AVE AND LILAC ST INTERSECTION
ELEV. 233.034

7			
6			
5			
4			
3			
2			
1			
0	ISSUED FOR TENDER	20250321	R.H.
NO.	REVISIONS	DATE	BY



DESIGNED BY: R.H./G.Z.
CHECKED BY: R.H.
DRAWN BY: K.C./W.D.
APPROVED BY: S.M.
HORIZ. SCALE: 1:250
VERTICAL: 1:10
RELEASED FOR CONSTRUCTION
DATE: JANUARY 2025

WSP Canada Inc.
1600 Buffalo Place
Winnipeg, MB R3T 6B8
t. 204.477.6650
f. 204.474.2864
www.wsp.com

ENGINEER'S SEAL

CONSULTANT ACAD DWG. NO.
CA0043424.6934-15

FOR TENDER PURPOSES ONLY
NOT FOR CONSTRUCTION

METRIC

WHOLE NUMBERS INDICATE MILLIMETRES
DECIMALIZED NUMBERS INDICATE METRES

ENGINEERS
GEOSCIENTISTS
MANITOBA
Certificate of Authorization
WSP Canada Inc.
No. 5750



THE CITY OF WINNIPEG
PUBLIC WORKS DEPARTMENT
ENGINEERING SERVICES DIVISION

2025 LOCAL STREET RENEWALS

HECTOR AVENUE

MAJOR REHABILITATION
STA. 1+80 TO STA. 2+58.87

CITY DRAWING NUMBER

SHEET 15 OF 47

TENDER NO.
230-2025