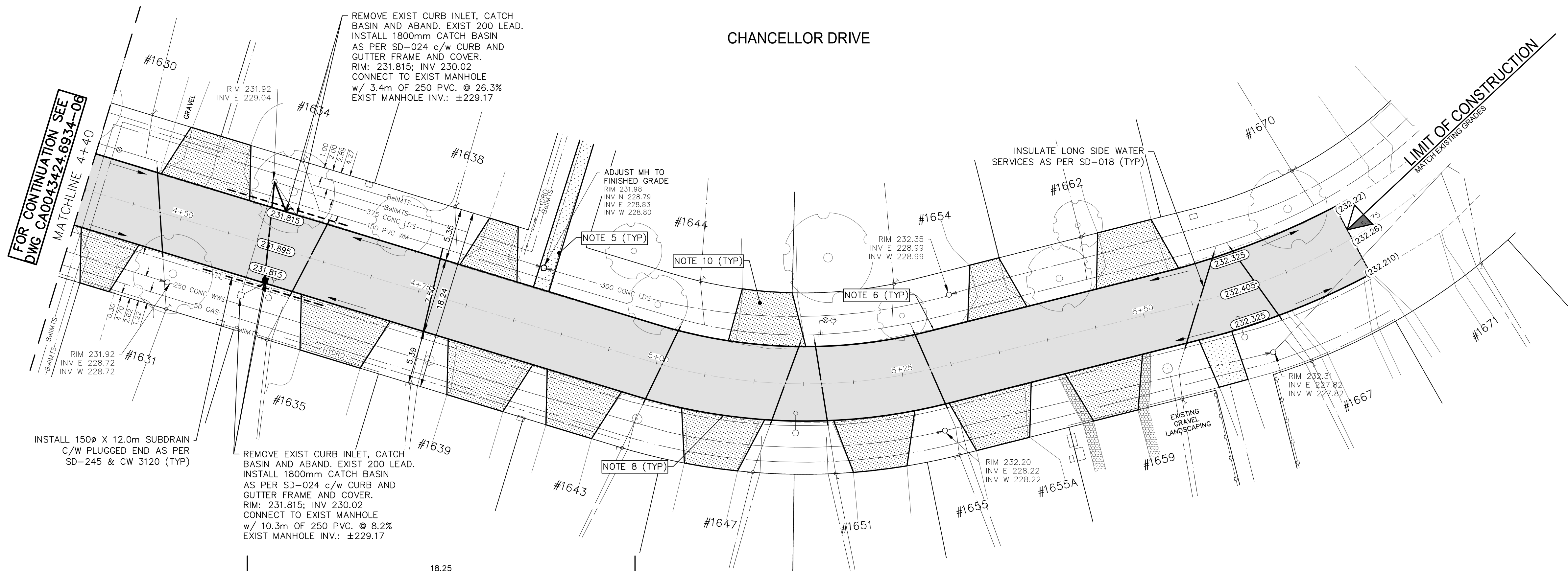
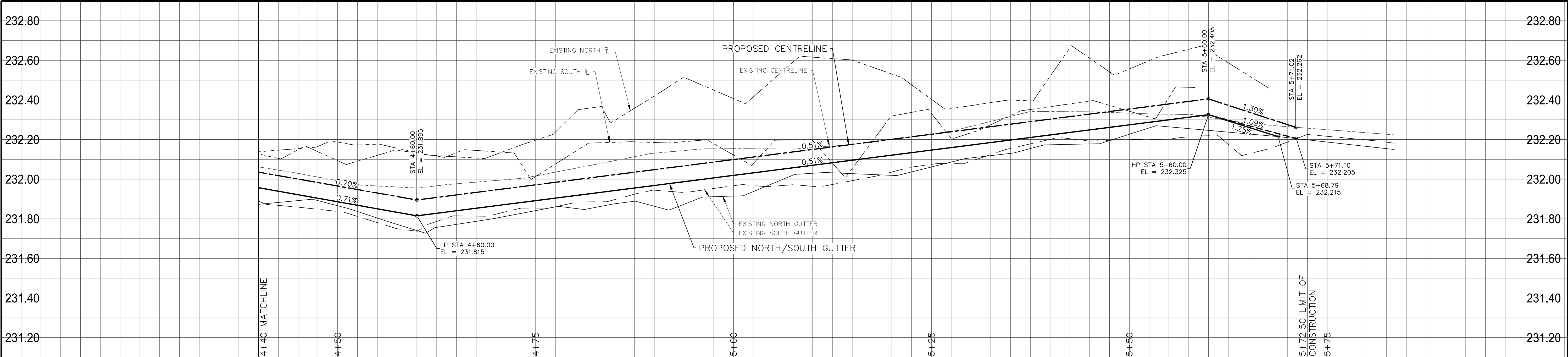
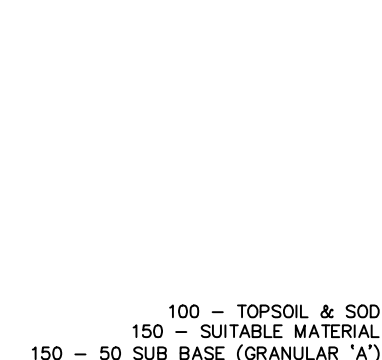
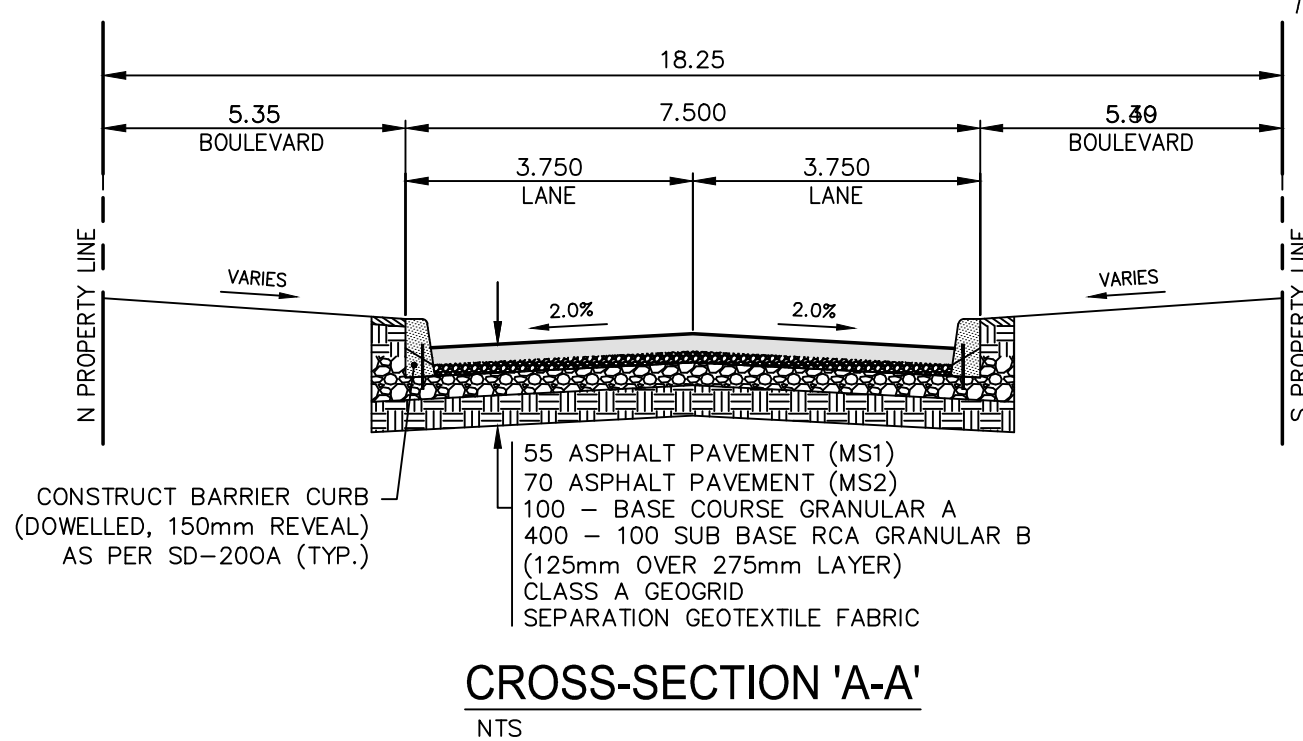


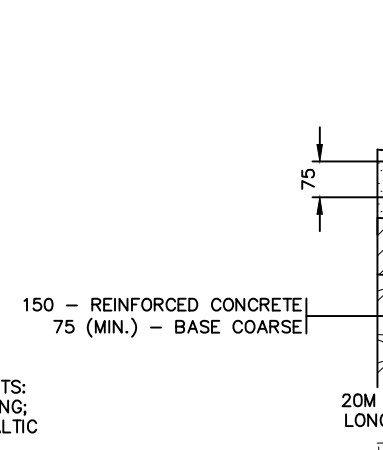
Mar 27, 2025 — 5:55pm  
P:\2024\CA0043424\6934 - CA-25-R-04 Local Streets\02 Drawings\03 Work\_Dwg CA0043424.6934\_CA\_25-R-04\_Chancellor\_Plan&Profile.dwg — tab:230-2025\_Drawing\_CA0043424.6934-07-R0



- NOTES:
1. ALL WORK AND MATERIALS TO BE IN ACCORDANCE WITH THE LATEST REVISION OF THE CITY OF WINNIPEG STANDARD CONSTRUCTION SPECIFICATIONS.
  2. CONTRACTOR TO CONFIRM THE LOCATION OF ALL UTILITIES/SERVICES IN THE FIELD PRIOR TO CONSTRUCTION.
  3. ALL ROADWAY DIMENSIONS SHOWN ARE TO BACK OF CURB.
  4. EXISTING ASPHALT TO BE PLANED AS SHOWN OR AS DIRECTED BY CONTRACT ADMINISTRATOR.
  5. EXISTING SIDEWALK TO BE RENEWED AS PER SD-228A AND AS DIRECTED BY CONTRACT ADMINISTRATOR.
  6. CURB TO BE CONSTRUCTED AS PER SD-200A AND AS DIRECTED BY CONTRACT ADMINISTRATOR.
  7. ALL PRIVATE WALKWAYS TO BE ADJUSTED TO NEW SIDEWALK OR TOP OF CURB ELEVATION, AS DIRECTED BY THE CONTRACT ADMINISTRATOR.
  8. LIP CURB AT PRIVATE APPROACHES TO BE CONSTRUCTED AS DIRECTED BY CONTRACT ADMINISTRATOR.
  9. MODIFIED BARRIER CURB TO BE CONSTRUCTED AT ALL INTERSECTION RADI AND ALLEY RADI.
  10. CONSTRUCT REINFORCED CONCRETE RESIDENTIAL APPROACH AS PER SD-237B AND AS DIRECTED BY CONTRACT ADMINISTRATOR.
  11. CONTRACTORS TO TAKE PRECAUTIONARY STEPS TO PROTECT EXISTING TREES WITHIN THE LIMITS OF CONSTRUCTION FROM DAMAGE FROM CONSTRUCTION ACTIVITIES AS OUTLINED IN THE SPECIFICATIONS.
  12. LAMP STANDARDS, HYDRO POLES, AND ANCHORS THAT REQUIRE TEMPORARY SUPPORT, REMOVAL OR REPLACEMENT, TO BE DONE SO AT THE EXPENSE OF THE CONTRACTOR AS NECESSARY.
  13. ALL BOULEVARDS TO BE SODDED UNLESS OTHERWISE NOTED.
  14. ADJUST ALL WATER VALVES, HYDRANTS, MANHOLES, AND CATCH BASINS IN WORK AREA TO GRADE.



DETAIL 'A' - DOWELLED BARRIER CURB (SD-200A) NTS



DETAIL 'B' - LIP CURB WITH APPROACH (SD-202B) NTS

FOR TENDER PURPOSES ONLY  
NOT FOR CONSTRUCTION

**METRIC**  
WHOLE NUMBERS INDICATE MILLIMETRES  
DECIMALIZED NUMBERS INDICATE METRES

**ENGINEERS  
GEOSCIENTISTS  
MANITOBA**  
Certificate of Authorization  
WSP Canada Inc.  
No. 5750

EXISTING	LEGEND-PLAN	PROPOSED	EXISTING	LEGEND-PLAN	PROPOSED	EXISTING	LEGEND-PLAN	PROPOSED	EXISTING	LEGEND-PLAN	PROPOSED
---	WATER MAIN	---	---	VALVE	---	---	EDGE OF SIDEWALK	---	---	VALVE	---
---	LAND DRAINAGE SEWER	---	---	CURB STOP	---	---	EDGE OF ASPHALT	---	---	CURB STOP	---
---	WASTE WATER SEWER	---	---	HYDRO POLE & LIGHT STANDARD	---	---	EDGE OF CONCRETE	---	---	HYDRO POLE & LIGHT STANDARD	---
---	HYDRO	---	---	LIGHT STANDARD OR TRAFFIC SIGNAL	---	---	MODIFIED BARRIER CURB	---	---	LIGHT STANDARD OR TRAFFIC SIGNAL	---
---	GAS	---	---	HYDRO POLE / ANCHOR	---	---	BARRIER CURB	---	---	HYDRO POLE / ANCHOR	---
---	COMMUNICATIONS	---	---	FENCE	---	---	BARRIER CURB AND GUTTER	---	---	FENCE	---
---	SIGNALS	---	---	PROPERTY LINE	---	---	PAVING STONE	---	---	PROPERTY LINE	---
○	MANHOLE	●	---	TEST HOLE / PAVEMENT CORE	---	---	CONCRETE SIDEWALK	---	---	TEST HOLE / PAVEMENT CORE	---
□	CATCH BASIN/CATCH PIT	■	---	ELEVATIONS	---	---	CONCRETE SLAB	---	---	ELEVATIONS	---
△	CURB INLET	▽	---	CURB RAMP	---	---	ASPHALT	---	---	CURB RAMP	---
◇	UTILITIES ADJUSTED	△ □ ○	---	DETECTABLE WARNING SURFACE TILE	---	---	MILLED SURFACE	---	---	DETECTABLE WARNING SURFACE TILE	---
◇	HYDRANT	◆	---		---	---	PAVEMENT REPAIR FABRIC	---	---		---
---	EXISTING	---	---		---	---		---	---		---

LOCATIONS APPROVED UNDERGROUND STRUCTURES
SIGNED BY: _____ DATE: _____
SUPV UG STRUCTURES _____
LOCATION OF UNDERGROUND STRUCTURES AS SHOWN ARE BASED ON THE BEST INFORMATION AVAILABLE BUT NO GUARANTEE IS GIVEN THAT ALL EXISTING UTILITIES ARE SHOWN OR THAT THE GIVEN LOCATIONS ARE EXACT CONFIRMATION OF EXISTENCE AND EXACT LOCATION OF ALL SERVICES MUST BE OBTAINED FROM THE INDIVIDUAL UTILITIES BEFORE PROCEEDING

G.B.M. ELEV.	TOH AT SW CORNER OF CHANCELLOR DR AND MARKHAM RD INTERSECTION 233.163
7	
6	
5	
4	
3	
2	
1	
0	ISSUED FOR TENDER
NO.	REVISIONS
	DATE BY

<b>wsp</b>	
DESIGNED BY R.H./G.Z.	CHECKED BY R.H.
DRAWN BY K.C./W.D.	APPROVED BY S.M.
HOR. SCALE 1:250	RELEASED FOR CONSTRUCTION
VERTICAL 1:10	
DATE JANUARY 2025	DATE

WSP Canada Inc. 1600 Buffalo Place Winnipeg, MB R3T 6B8 t. 204.477.6650 f. 204.474.2864 www.wsp.com
ENGINEER'S SEAL
CONSULTANT ACAD DWG. NO. CA0043424.6934-07

**THE CITY OF WINNIPEG**  
PUBLIC WORKS DEPARTMENT  
ENGINEERING SERVICES DIVISION

**2025 LOCAL STREET RENEWALS**  
CHANCELLOR DRIVE  
ASPHALT RECONSTRUCTION  
STA. 4+40 TO STA. 5+72.5

CITY DRAWING NUMBER  
SHEET 07 OF 47  
TENDER NO.  
230-2025