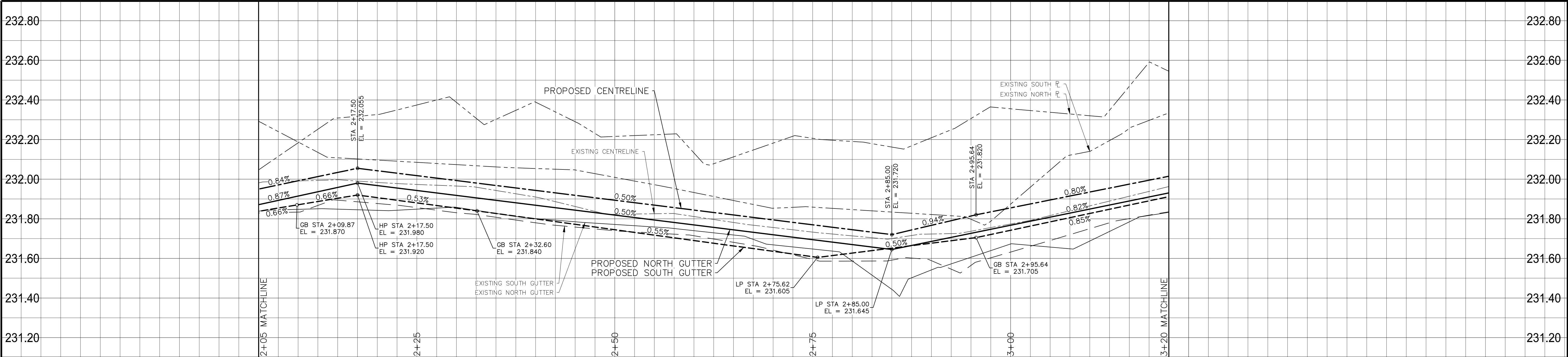
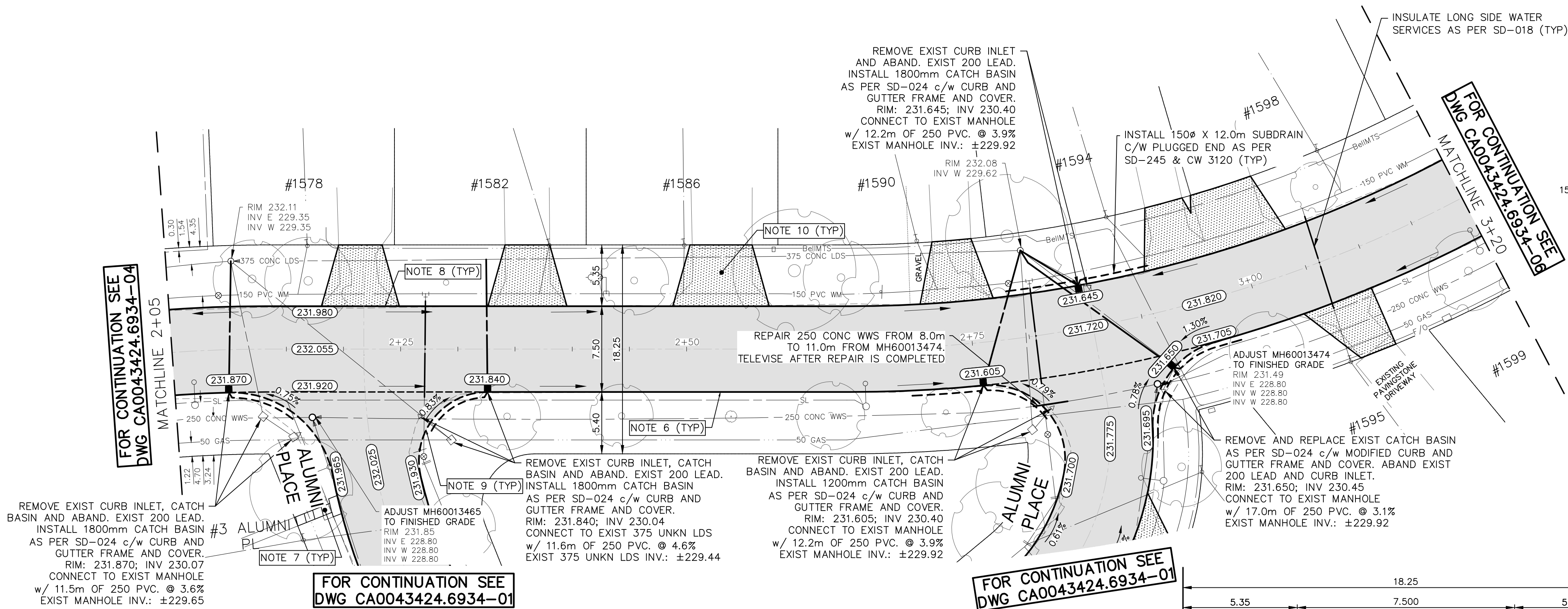


Mar 27, 2025 — 5:54pm  
P:\2024\CA0043424.6934 - CA-25-R-04 Local Streets\02 Drawings\03 Work\_Dwg CA0043424.6934\_CA\_25-R-04\_Chancellor\_Plan&Profile.dwg - tab:230-2025\_Drawing\_CA0043424.6934-05-R0



CHANCELLOR DRIVE



- NOTES:
1. ALL WORK AND MATERIALS TO BE IN ACCORDANCE WITH THE LATEST REVISION OF THE CITY OF WINNIPEG STANDARD CONSTRUCTION SPECIFICATIONS.
  2. CONTRACTOR TO CONFIRM THE LOCATION OF ALL UTILITIES/SERVICES IN THE FIELD PRIOR TO CONSTRUCTION.
  3. ALL ROADWAY DIMENSIONS SHOWN ARE TO BACK OF CURB.
  4. EXISTING ASPHALT TO BE PLANED AS SHOWN OR AS DIRECTED BY CONTRACT ADMINISTRATOR.
  5. EXISTING SIDEWALK TO BE RENEWED AS PER SD-228A AND AS DIRECTED BY CONTRACT ADMINISTRATOR.
  6. CURB TO BE CONSTRUCTED AS PER SD-200A AND AS DIRECTED BY CONTRACT ADMINISTRATOR.
  7. ALL PRIVATE WALKWAYS TO BE ADJUSTED TO NEW SIDEWALK OR TOP OF CURB ELEVATION, AS DIRECTED BY THE CONTRACT ADMINISTRATOR.
  8. LIP CURB AT PRIVATE APPROACHES TO BE CONSTRUCTED AS DIRECTED BY CONTRACT ADMINISTRATOR.
  9. MODIFIED BARRIER CURB TO BE CONSTRUCTED AT ALL INTERSECTION RADI AND ALLEY RADI.
  10. CONSTRUCT REINFORCED CONCRETE RESIDENTIAL APPROACH AS PER SD-237B AND AS DIRECTED BY CONTRACT ADMINISTRATOR.
  11. CONTRACTORS TO TAKE PRECAUTIONARY STEPS TO PROTECT EXISTING TREES WITHIN THE LIMITS OF CONSTRUCTION FROM DAMAGE FROM CONSTRUCTION ACTIVITIES AS OUTLINED IN THE SPECIFICATIONS.
  12. LAMP STANDARDS, HYDRO POLES, AND ANCHORS THAT REQUIRE TEMPORARY SUPPORT, REMOVAL OR REPLACEMENT, TO BE DONE SO AT THE EXPENSE OF THE CONTRACTOR AS NECESSARY.
  13. ALL BOULEVARDS TO BE SODDED UNLESS OTHERWISE NOTED.
  14. ADJUST ALL WATER VALVES, HYDRANTS, MANHOLES, AND CATCH BASINS IN WORK AREA TO GRADE.

---	WATER MAIN	---	⊗	VALVE	---	---	EDGE OF SIDEWALK	---
---	LAND DRAINAGE SEWER	---	♂	CURB STOP	---	---	EDGE OF ASPHALT	---
---	WASTE WATER SEWER	---	---	HYDRO POLE & LIGHT STANDARD	---	---	EDGE OF CONCRETE	---
---	HYDRO	---	→/→	LIGHT STANDARD OR TRAFFIC SIGNAL	---	---	MODIFIED BARRIER CURB	---
---	GAS	---	HP	HYDRO POLE / ANCHOR	---	---	BARRIER CURB	---
---	COMMUNICATIONS	---	→/→	FENCE	---	---	BARRIER CURB AND GUTTER	---
---	SIGNALS	---	---	PROPERTY LINE	---	---	PAVING STONE	---
○	MANHOLE	●	⊕	IRON BAR	---	---	CONCRETE SIDEWALK	---
□	CATCH BASIN/CATCH PIT	■	⊕	TEST HOLE / PAVEMENT CORE	---	---	CONCRETE SLAB	---
△	CURB INLET	▼	(231.00)	ELEVATIONS	---	---	ASPHALT	---
---	UTILITIES ADJUSTED	△ □ ○	---	CURB RAMP	---	---	MILLED SURFACE	---
◇	HYDRANT	◆	---	DETECTABLE WARNING SURFACE TILE	---	---	PAVEMENT REPAIR FABRIC	---
---	EXISTING	---	---	LEGEND-PLAN	---	---	LEGEND-PLAN	---

LOCATIONS APPROVED UNDERGROUND STRUCTURES

SIGNED BY:  
SUPV UG STRUCTURES

DATE

LOCATION OF UNDERGROUND STRUCTURES AS SHOWN ARE BASED ON THE BEST INFORMATION AVAILABLE BUT NO GUARANTEE IS GIVEN THAT ALL EXISTING UTILITIES ARE SHOWN OR THAT THE GIVEN LOCATIONS ARE EXACT CONFIRMATION OF EXISTENCE AND EXACT LOCATION OF ALL SERVICES MUST BE OBTAINED FROM THE INDIVIDUAL UTILITIES BEFORE PROCEEDING

G.B.M. TOH AT SW CORNER OF CHANCELLOR DR AND MARHAM RD INTERSECTION  
ELEV. 233.163

7			
6			
5			
4			
3			
2			
1			
0	ISSUED FOR TENDER	2025/09/21	R.H.
NO.	REVISIONS	DATE	BY



DESIGNED BY  
R.H./G.Z.

DRAWN BY  
K.C.W.D.

HOR. SCALE  
1:250

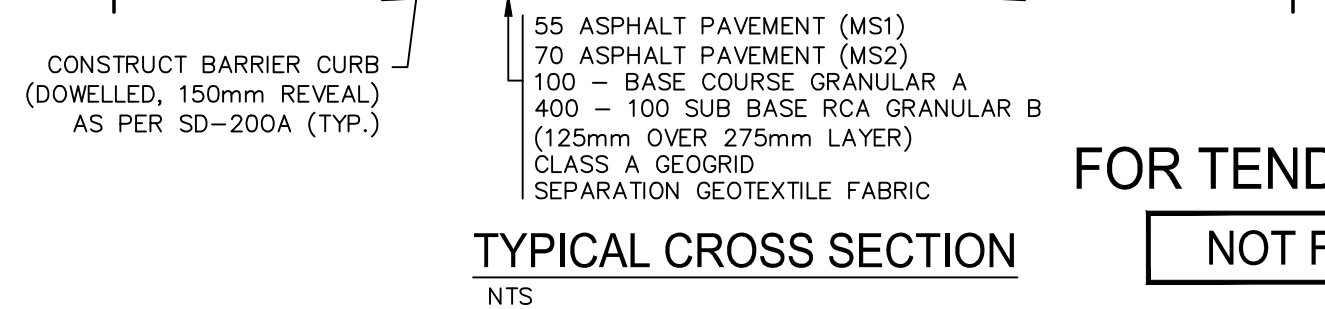
VERTICAL  
1:10

DATE  
JANUARY 2025

WSP Canada Inc.  
1600 Buffalo Place  
Winnipeg, MB R3T 6B8  
t. 204.477.6650  
f. 204.474.2864  
www.wsp.com

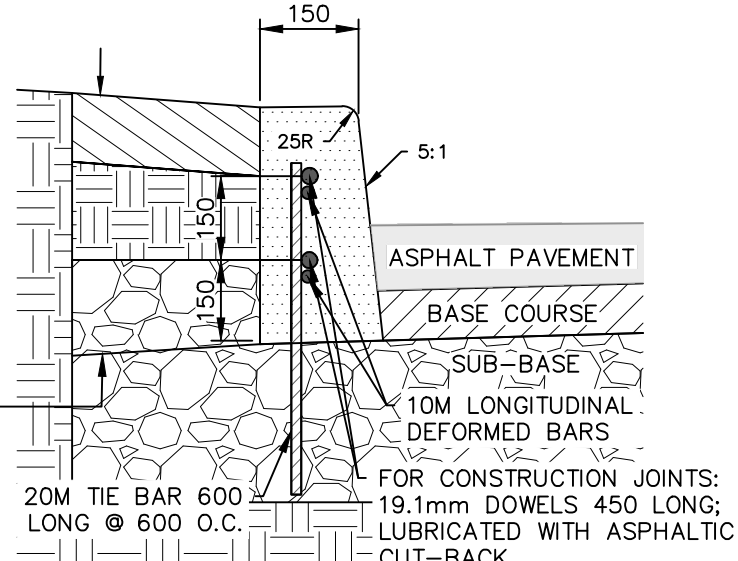
ENGINEER'S SEAL

TYPICAL CROSS SECTION



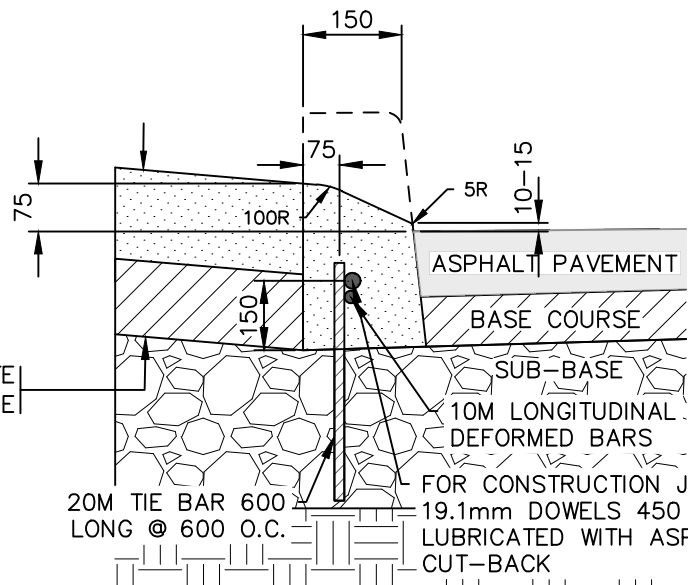
FOR TENDER PURPOSES ONLY

NOT FOR CONSTRUCTION



DETAIL 'A' - DOWELLED BARRIER CURB (SD-200A)

NTS



DETAIL 'B' - LIP CURB WITH APPROACH (SD-202B)

NTS

METRIC

WHOLE NUMBERS INDICATE MILLIMETRES  
DECIMALIZED NUMBERS INDICATE METRES

**ENGINEERS**  
**GEOSCIENTISTS**  
**MANITOBA**  
Certificate of Authorization  
WSP Canada Inc.  
No. 5750



**THE CITY OF WINNIPEG**  
PUBLIC WORKS DEPARTMENT  
ENGINEERING SERVICES DIVISION

2025 LOCAL STREET RENEWALS

CHANCELLOR DRIVE

ASPHALT RECONSTRUCTION  
STA. 2+05 TO STA. 3+20

CITY DRAWING NUMBER

SHEET 05 OF 47

TENDER NO.  
230-2025