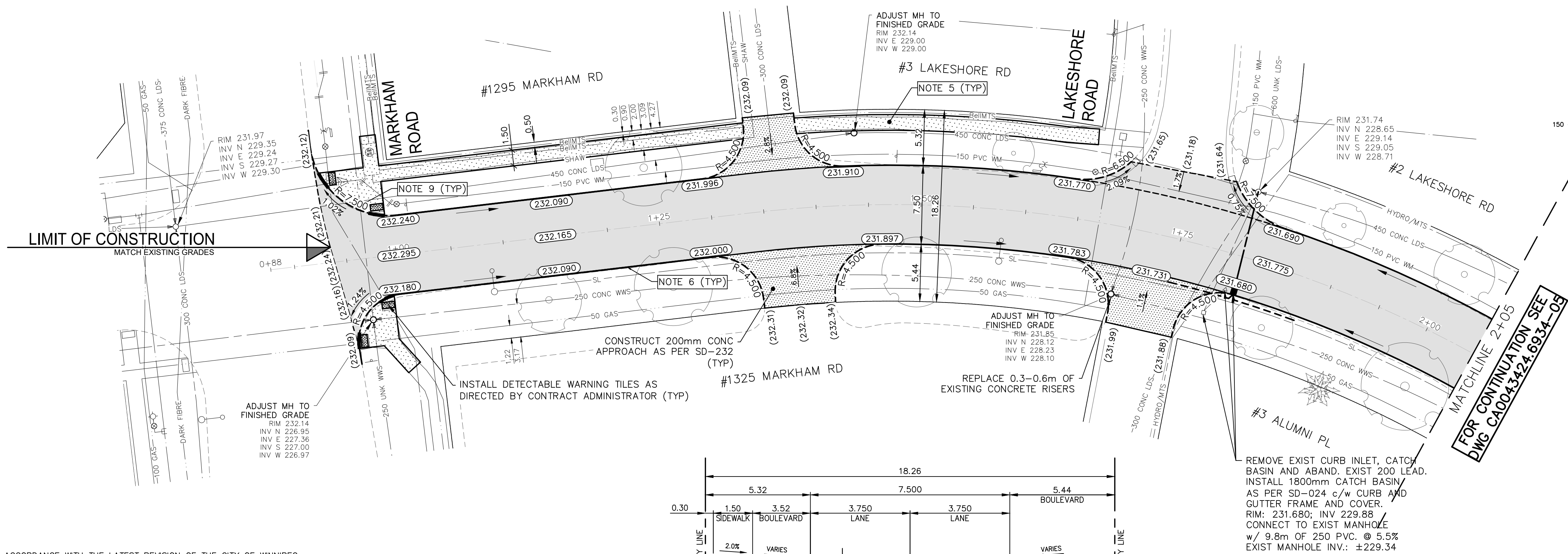
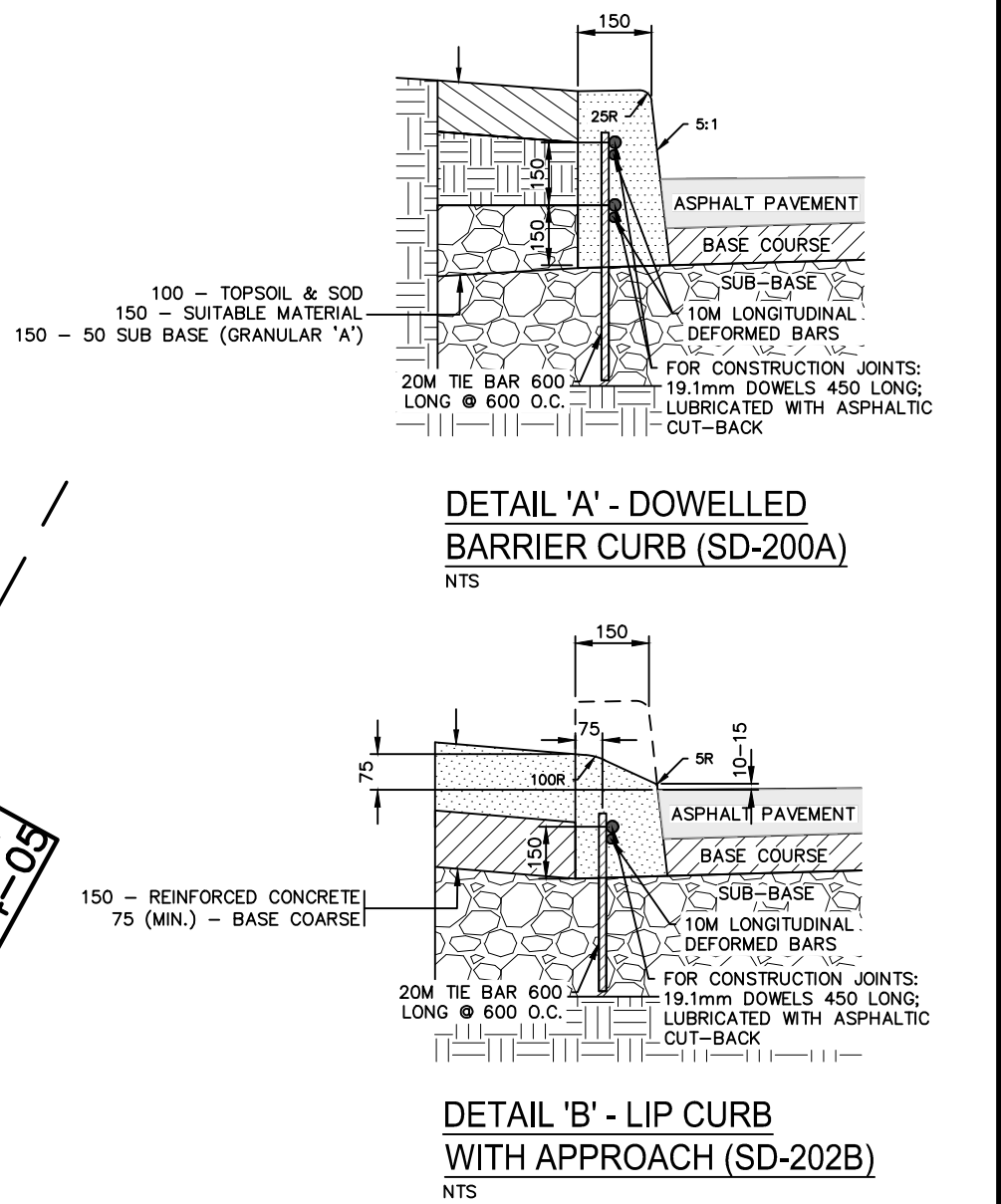
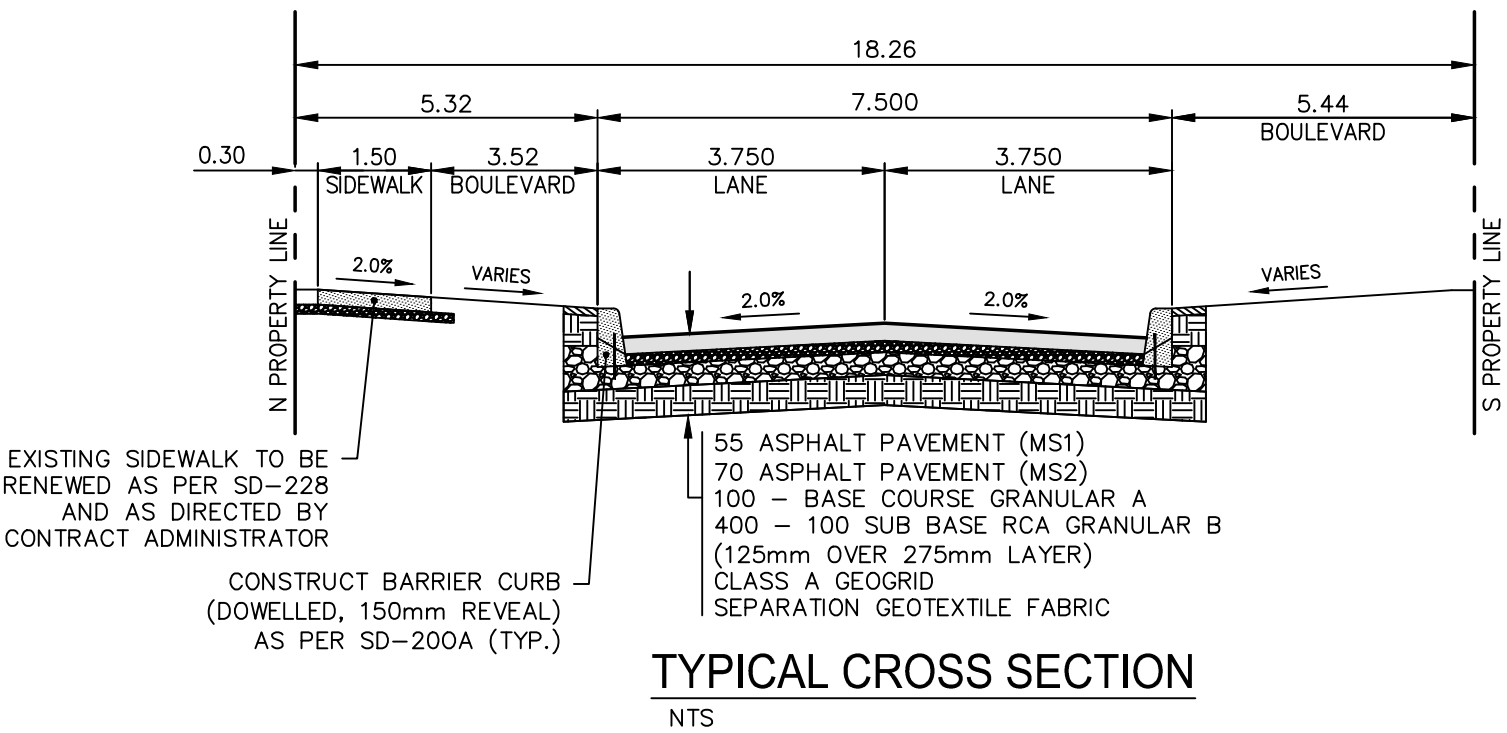


### CHANCELLOR DRIVE



- NOTES:
1. ALL WORK AND MATERIALS TO BE IN ACCORDANCE WITH THE LATEST REVISION OF THE CITY OF WINNIPEG STANDARD CONSTRUCTION SPECIFICATIONS.
  2. CONTRACTOR TO CONFIRM THE LOCATION OF ALL UTILITIES/SERVICES IN THE FIELD PRIOR TO CONSTRUCTION.
  3. ALL ROADWAY DIMENSIONS SHOWN ARE TO BACK OF CURB.
  4. EXISTING ASPHALT TO BE PLANED AS SHOWN OR AS DIRECTED BY CONTRACT ADMINISTRATOR.
  5. EXISTING SIDEWALK TO BE RENEWED AS PER SD-228A AND AS DIRECTED BY CONTRACT ADMINISTRATOR.
  6. CURB TO BE CONSTRUCTED AS PER SD-200A AND AS DIRECTED BY CONTRACT ADMINISTRATOR.
  7. ALL PRIVATE WALKWAYS TO BE ADJUSTED TO NEW SIDEWALK OR TOP OF CURB ELEVATION, AS DIRECTED BY THE CONTRACT ADMINISTRATOR.
  8. LIP CURB AT PRIVATE APPROACHES TO BE CONSTRUCTED AS DIRECTED BY CONTRACT ADMINISTRATOR.
  9. MODIFIED BARRIER CURB TO BE CONSTRUCTED AT ALL INTERSECTION RADI AND ALLEY RADI.
  10. CONSTRUCT REINFORCED CONCRETE RESIDENTIAL APPROACH AS PER SD-237B AND AS DIRECTED BY CONTRACT ADMINISTRATOR.
  11. CONTRACTORS TO TAKE PRECAUTIONARY STEPS TO PROTECT EXISTING TREES WITHIN THE LIMITS OF CONSTRUCTION FROM DAMAGE FROM CONSTRUCTION ACTIVITIES AS OUTLINED IN THE SPECIFICATIONS.
  12. LAMP STANDARDS, HYDRO POLES, AND ANCHORS THAT REQUIRE TEMPORARY SUPPORT, REMOVAL OR REPLACEMENT, TO BE DONE SO AT THE EXPENSE OF THE CONTRACTOR AS NECESSARY.
  13. ALL BOULEVARDS TO BE SODDED UNLESS OTHERWISE NOTED.
  14. ADJUST ALL WATER VALVES, HYDRANTS, MANHOLES, AND CATCH BASINS IN WORK AREA TO GRADE.

---	WATER MAIN	---	⊗	VALVE	---	---	EDGE OF SIDEWALK	---
---	LAND DRAINAGE SEWER	---	⊗	CURB STOP	---	---	EDGE OF ASPHALT	---
---	WASTE WATER SEWER	---	⊗	HYDRO POLE & LIGHT STANDARD	---	---	EDGE OF CONCRETE	---
---	HYDRO	---	⊗	LIGHT STANDARD OR TRAFFIC SIGNAL	---	---	MODIFIED BARRIER CURB	---
---	GAS	---	⊗	HYDRO POLE / ANCHOR	---	---	BARRIER CURB	---
---	COMMUNICATIONS	---	⊗	FENCE	---	---	BARRIER CURB AND GUTTER	---
---	SIGNALS	---	⊗	PROPERTY LINE	---	---	PAVING STONE	---
○	MANHOLE	●	⊗	TEST HOLE / PAVEMENT CORE	---	---	CONCRETE SIDEWALK	---
□	CATCH BASIN/CATCH PIT	■	⊗	ELEVATIONS	(231.000)	(231.000)	CONCRETE SLAB	---
△	CURB INLET	▼	⊗	CURB RAMP	---	---	ASPHALT	---
◇	UTILITIES ADJUSTED	△ □ ○	⊗	DETECTABLE WARNING SURFACE TILE	---	---	MILLED SURFACE	---
◇	HYDRANT	◆	⊗	---	---	---	PAVEMENT REPAIR FABRIC	---
---	EXISTING	---	---	---	---	---	---	---



### METRIC

WHOLE NUMBERS INDICATE MILLIMETRES  
DECIMALIZED NUMBERS INDICATE METRES

**ENGINEERS  
GEOSCIENTISTS  
MANITOBA**  
Certificate of Authorization  
WSP Canada Inc.  
No. 5750

FOR TENDER PURPOSES ONLY

NOT FOR CONSTRUCTION

LOCATIONS APPROVED UNDERGROUND STRUCTURES				G.B.A. TOH AT SW CORNER OF CHANCELLOR DR AND MARKHAM RD INTERSECTION ELEV. 233.163				WSP Canada Inc. 1600 Buffalo Place Winnipeg, MB R3T 6B8 t. 204.477.6650 f. 204.474.2864 www.wsp.com				ENGINEER'S SEAL			
SIGNED BY: SUPV UG STRUCTURES				DATE				DESIGNED BY: R.H./G.Z.				CHECKED BY: R.H.			
LOCATION OF UNDERGROUND STRUCTURES AS SHOWN ARE BASED ON THE BEST INFORMATION AVAILABLE BUT NO GUARANTEE IS GIVEN THAT ALL EXISTING UTILITIES ARE SHOWN OR THAT THE GIVEN LOCATIONS ARE EXACT CONFIRMATION OF EXISTENCE AND EXACT LOCATION OF ALL SERVICES MUST BE OBTAINED FROM THE INDIVIDUAL UTILITIES BEFORE PROCEEDING				NO. 0				DRAWN BY: K.C.W.D.				APPROVED BY: S.M.			
				1				HOR. SCALE 1:250				RELEASED FOR CONSTRUCTION			
				0				VERTICAL SCALE 1:10				CONSULTANT ACAD DWG. NO. CA0043424.6934-04			
				DATE				DATE							
				BY				DATE							
				JANUARY 2025											

THE CITY OF WINNIPEG PUBLIC WORKS DEPARTMENT ENGINEERING SERVICES DIVISION				CITY DRAWING NUMBER			
2025 LOCAL STREET RENEWALS				SHEET 04 OF 47			
CHANCELLOR DRIVE				TENDER NO. 230-2025			
ASPHALT RECONSTRUCTION STA. 0+93.83 TO STA. 2+05							