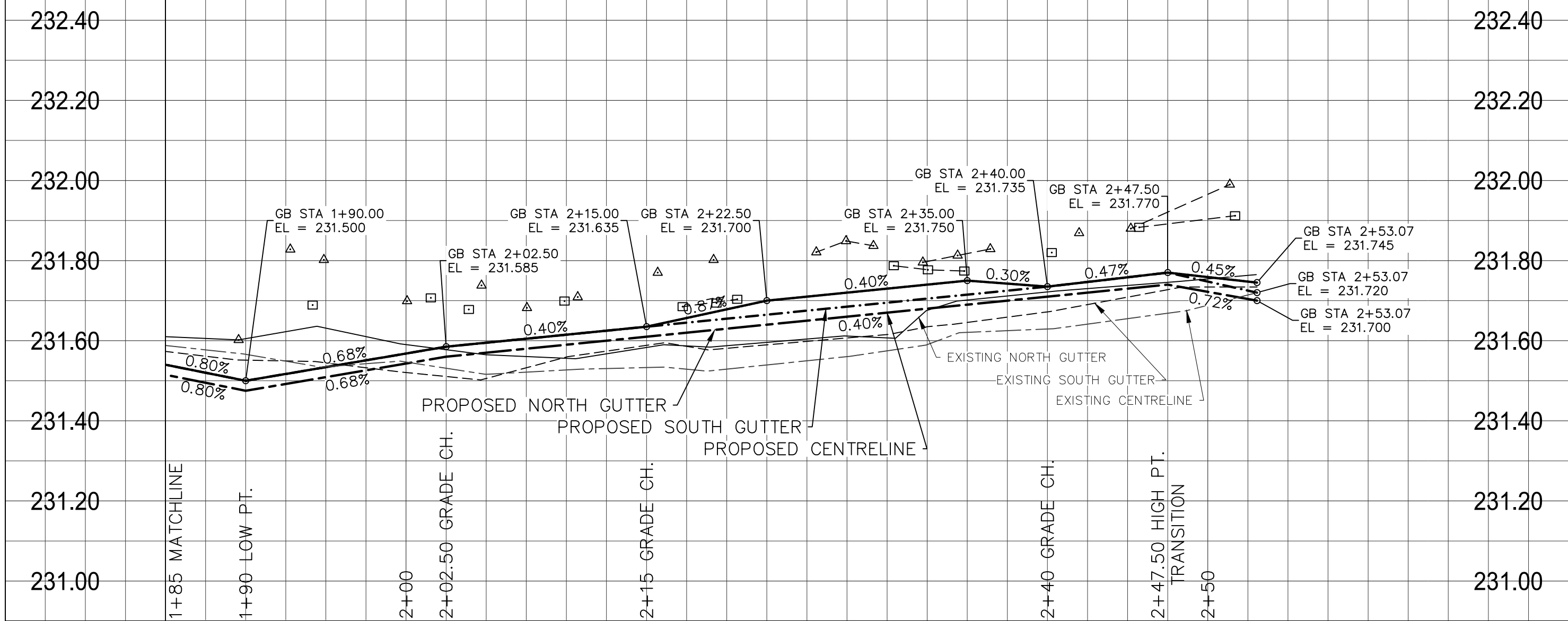
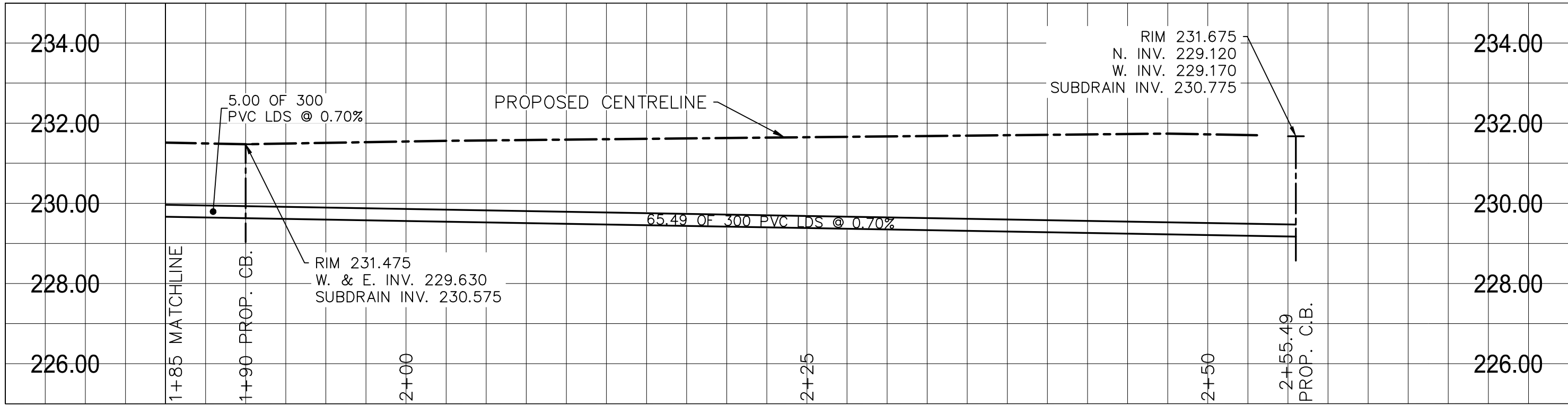


Mar 21, 2025 - 10:41am
P:\2024\CA0043424.6934 - CA-25-R-04 Local Streets\02 Drawings\03_Work_Dwg\CA0043424.6934_CA_25-R-04_Kylemore_Walker_Alley_Plan&Profile.dwg - tab:227-2025_CA0043424.6934_55-RC

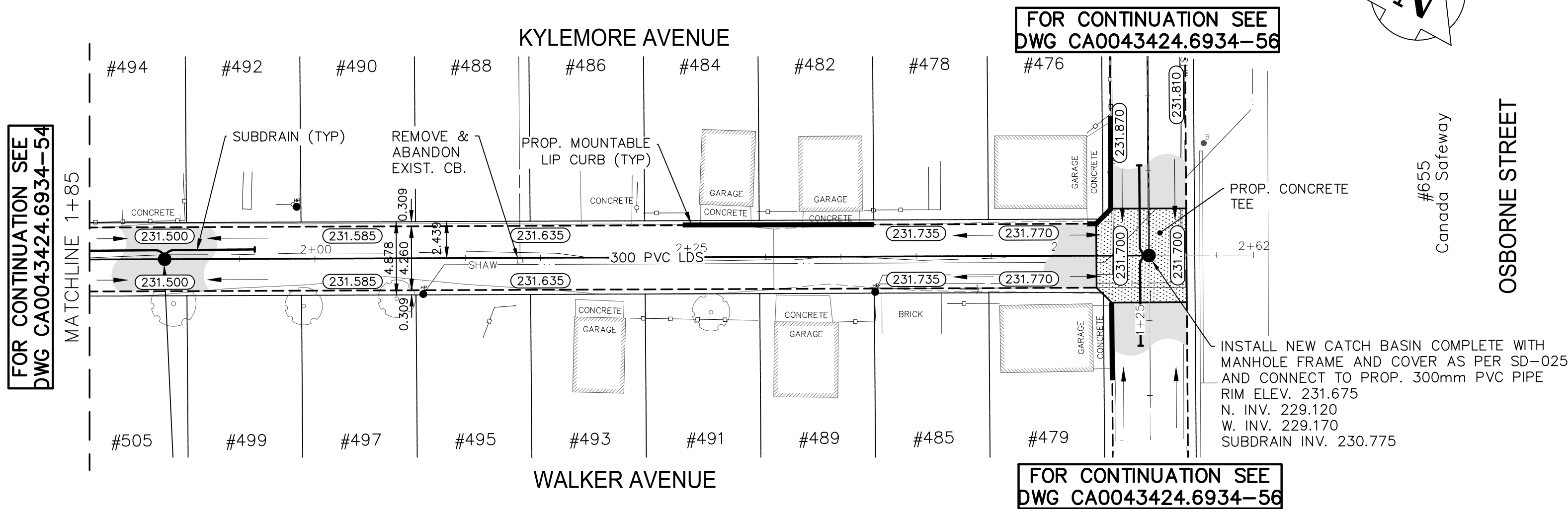
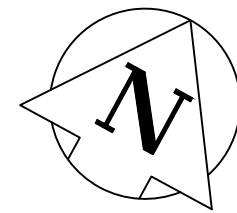


ALLEY PAVEMENT PROFILE
SCALE: 1:250 HOR
1:10 VER

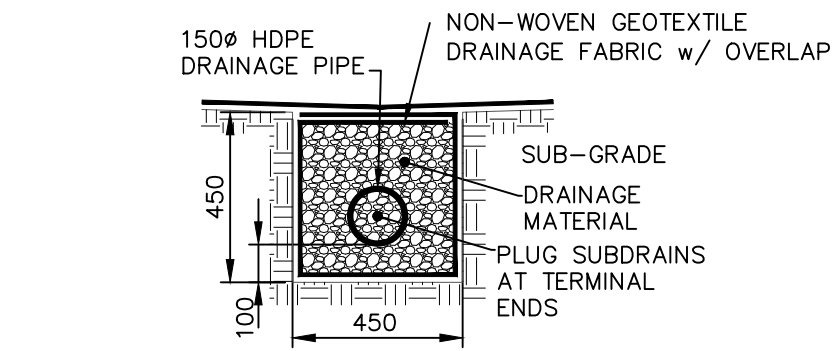
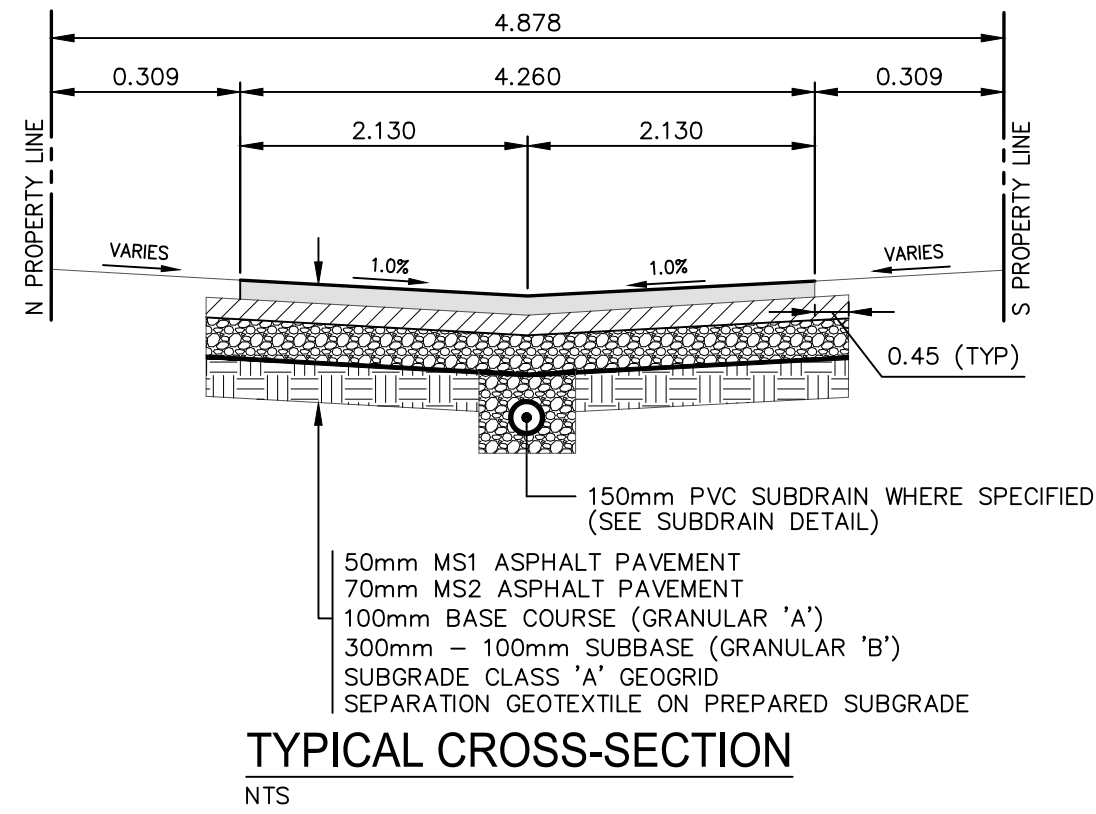


LAND DRAINAGE SEWER PROFILE
SCALE: 1:250 HOR
1:100 VER

PHASE 1 PHASE 2
CONSTRUCTION CONSTRUCTION

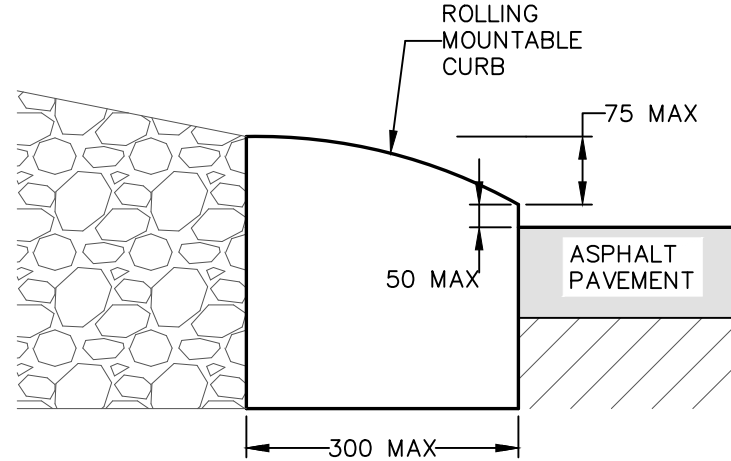


- NOTES:
1. ALL WORK AND MATERIALS TO BE IN ACCORDANCE WITH THE LATEST REVISION OF THE CITY OF WINNIPEG STANDARD CONSTRUCTION SPECIFICATIONS.
 2. CONTRACTOR TO CONFIRM THE LOCATION OF ALL UTILITIES/SERVICES IN THE FIELD PRIOR TO CONSTRUCTION.
 3. ALL ROADWAY DIMENSIONS SHOWN ARE TO EDGE OF PAVEMENT.
 4. EXISTING ASPHALT TO BE PLANED AS SHOWN OR AS DIRECTED BY CONTRACT ADMINISTRATOR.
 5. 150mm PARTIAL CONCRETE SLAB PATCHES SHOWN ARE ONLY A REPRESENTATIVE APPROXIMATION OF THE TENDERED QUANTITIES.
 6. EXISTING SIDEWALK TO BE RENEWED AS PER SD-228A AND AS DIRECTED BY CONTRACT ADMINISTRATOR.
 7. RENEW EXISTING CURB AS DIRECTED BY CONTRACT ADMINISTRATOR.
 8. ALL PRIVATE WALKWAYS TO BE ADJUSTED TO NEW SIDEWALK OR TOP OF CURB ELEVATION, AS DIRECTED BY THE CONTRACT ADMINISTRATOR.
 9. PAVEMENT REPAIR FABRIC TO BE INSTALLED AS SHOWN OR AS DIRECTED BY CONTRACT ADMINISTRATOR.
 10. MODIFIED BARRIER CURB TO BE CONSTRUCTED AT ALL RADII AS DIRECTED BY CONTRACT ADMINISTRATOR.
 11. CONTRACTOR TO TAKE PRECAUTIONARY STEPS TO PROTECT EXISTING TREES WITHIN THE LIMITS OF CONSTRUCTION FROM DAMAGE FROM CONSTRUCTION ACTIVITIES AS OUTLINED IN THE SPECIFICATIONS.
 12. LAMP STANDARDS, HYDRO POLES, AND ANCHORS THAT REQUIRE TEMPORARY SUPPORT, REMOVAL OR REPLACEMENT, TO BE DONE SO AT THE EXPENSE OF THE CONTRACTOR AS NECESSARY.
 13. ALL BOULEVARDS TO BE SODDED UNLESS OTHERWISE NOTED.
 14. ADJUST ALL WATER VALVES, HYDRANTS, MANHOLES, AND CATCH BASINS IN WORK AREA TO GRADE.



- REFERENCE SPECIFICATIONS
1. SUB-GRADE, SUB-BASE AND BASE MATERIAL SHALL BE SUPPLIED AND PLACED IN ACCORDANCE WITH CW-3110
 2. INSTALLATION OF SUBDRAINS SHALL BE IN ACCORDANCE WITH CW-3120
 3. DRAINAGE GEOTEXTILE FABRIC AND DRAINAGE PIPE SHALL CONFORM TO "APPROVED PRODUCTS FOR SURFACE WORKS"

TYPICAL ALLEY SUBDRAIN DETAIL
NTS



TYPICAL MOUNTABLE LIP CURB DETAIL
NTS

METRIC

WHOLE NUMBERS INDICATE MILLIMETRES
DECIMALIZED NUMBERS INDICATE METRES

**ENGINEERS
GEOSCIENTISTS
MANITOBA**
Certificate of Authorization
WSP Canada Inc.
No. 5750

NOTE: CHAINAGES SHOWN ARE ALONG
℄ OF RIGHT-OF-WAY

FOR TENDER PURPOSES ONLY
NOT FOR CONSTRUCTION

| EXISTING | LEGEND-PLAN | PROPOSED | EXISTING | LEGEND-PLAN | PROPOSED | EXISTING | LEGEND-PLAN | PROPOSED |
|----------|-----------------------|----------|----------|----------------------------------|----------|----------|-------------------------|----------|
| — | WATER MAIN | — | — | NORTH/WEST GARAGE APPROACH | — | — | EDGE OF SIDEWALK | — |
| — | LAND DRAINAGE SEWER | — | — | SOUTH/EAST GARAGE APPROACH | — | — | EDGE OF ASPHALT | — |
| — | WASTE WATER SEWER | — | — | VALVE | — | — | EDGE OF CONCRETE | — |
| — | HYDRO | — | — | CURB STOP | — | — | MODIFIED BARRIER CURB | — |
| — | GAS | — | — | HYDRO POLE & LIGHT STANDARD | — | — | BARRIER CURB | — |
| — | COMMUNICATIONS | — | — | LIGHT STANDARD OR TRAFFIC SIGNAL | — | — | BARRIER CURB AND GUTTER | — |
| — | SIGNALS | — | — | HYDRO POLE / ANCHOR | — | — | PAVING STONE | — |
| — | MANHOLE | — | — | FENCE | — | — | CONCRETE SIDEWALK | — |
| — | CATCH BASIN/CATCH PIT | — | — | PROPERTY LINE | — | — | CONCRETE SLAB | — |
| — | CURB INLET | — | — | TEST HOLE / PAVEMENT CORE | — | — | ASPHALT | — |
| — | UTILITIES ADJUSTED | — | — | ELEVATIONS | — | — | MILLED SURFACE | — |
| — | HYDRANT | — | — | CURB RAMP | — | — | PAVEMENT REPAIR FABRIC | — |
| — | LEGEND-PLAN | — | — | DETECTABLE WARNING SURFACE TILE | — | — | | |

LOCATIONS APPROVED UNDERGROUND STRUCTURES

SIGNED BY: SUPV UG STRUCTURES DATE

LOCATION OF UNDERGROUND STRUCTURES AS SHOWN ARE BASED ON THE BEST INFORMATION AVAILABLE BUT NO GUARANTEE IS GIVEN THAT ALL EXISTING UTILITIES ARE SHOWN OR THAT THE GIVEN LOCATIONS ARE EXACT CONFIRMATION OF EXISTANCE AND EXACT LOCATION OF ALL SERVICES MUST BE OBTAINED FROM THE INDIVIDUAL UTILITIES BEFORE PROCEEDING

G.B.M. TOH AT SOUTH-WEST CORNER OF NASSAU ST. SOUTH AND WALKER AVE.
ELEV. 232.805

H
G
F
E
D
C
B
A
NO.

ISSUED FOR TENDER
ISSUED FOR COW REVIEW
ISSUED FOR INTERNAL REVIEW

DATE BY

wsp
WSP Canada Inc.
1600 Buffalo Place
Winnipeg, MB R3T 6B8
t. 204.477.6650
f. 204.474.2864
www.wsp.com

DESIGNED BY: A.B./E.M.
CHECKED BY: S.M.
DRAWN BY: A.B./E.M.
APPROVED BY: S.M.

HOR. SCALE: 1:250
VERTICAL: 1:10
RELEASED FOR CONSTRUCTION
DATE: JANUARY 2025

ENGINEER'S SEAL

CONSULTANT ACAD DWG. NO.
CA0043424.6934-55



THE CITY OF WINNIPEG
PUBLIC WORKS DEPARTMENT
ENGINEERING SERVICES DIVISION

2025 LOCAL STREET ALLEY RENEWALS
KYLEMORE AVE/WALKER AVE. EAST-WEST ALLEY

ALLEY RECONSTRUCTION
STA. 1+85 TO STA. 2+53.08

CITY DRAWING NUMBER

SHEET 8 OF 12

TENDER NO.
227-2025