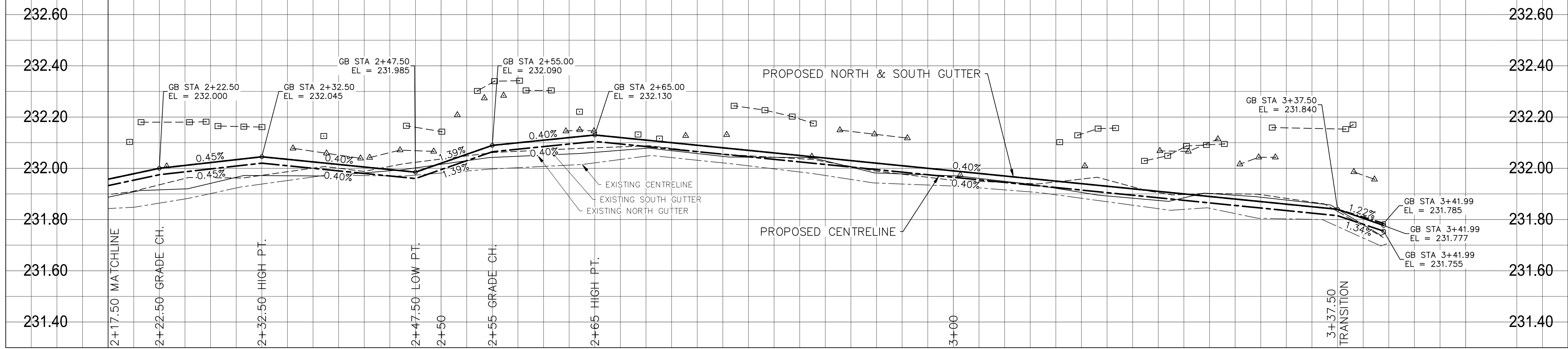
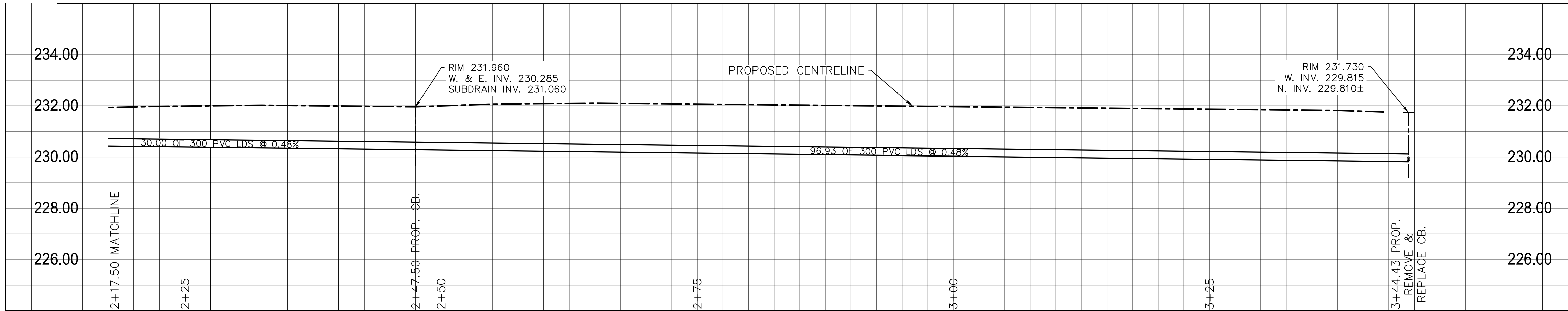


Apr 07, 2025 - 2:33pm
P:\2024\CA0043424.6934 - CA-25-R-04 Local Streets\02 Drawings\02 Work_Dwg\CA0043424.6934_CA_25-R-04_Walker_Ratgar_Alley_Plan&Profile.dwg - tab: 227 - 2025_CA0043424.6934_56-RD



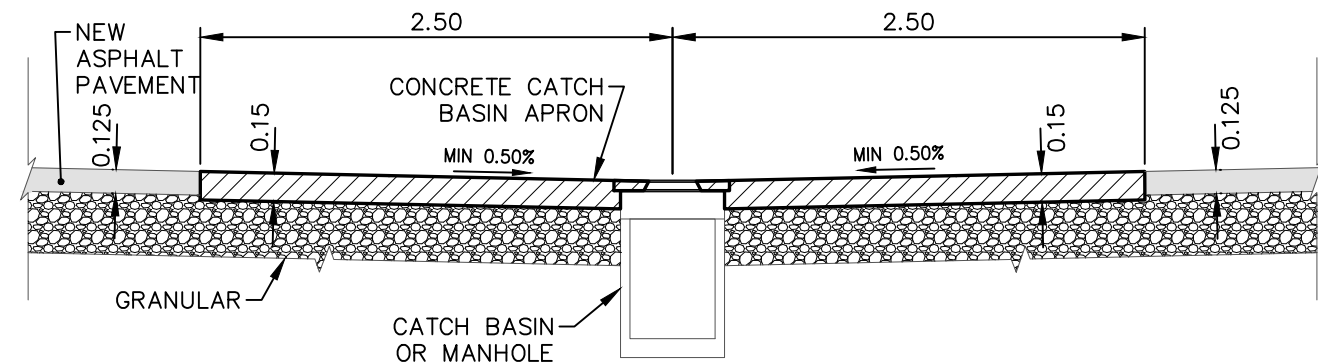
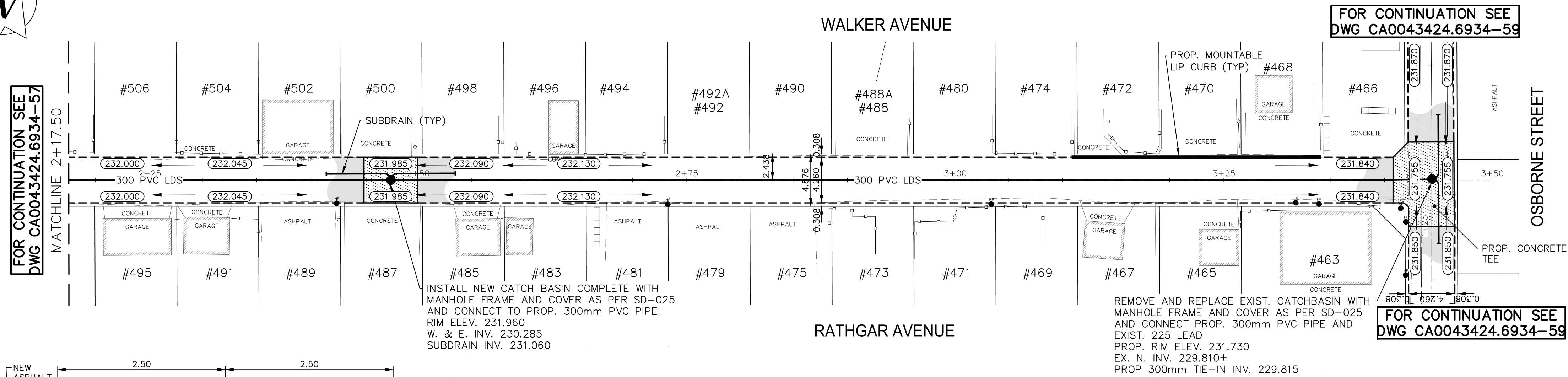
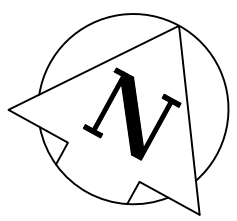
ALLEY PAVEMENT PROFILE

SCALE: 1:250 HOR
1:10 VER



LAND DRAINAGE SEWER PROFILE

SCALE: 1:250 HOR
1:100 VER



TYPICAL TEE CATCHBASIN APRON DETAIL

NTS

EXISTING	LEGEND-PLAN	PROPOSED	EXISTING	LEGEND-PLAN	PROPOSED	EXISTING	LEGEND-PLAN	PROPOSED
---	WATER MAIN	---	---	NORTH/WEST GARAGE APPROACH	---	---	EDGE OF SIDEWALK	---
---	LAND DRAINAGE SEWER	---	---	SOUTH/EAST GARAGE APPROACH	---	---	EDGE OF ASPHALT	---
---	WASTE WATER SEWER	---	---	VALVE	---	---	EDGE OF CONCRETE	---
---	HYDRO	---	---	CURB STOP	---	---	MODIFIED BARRIER CURB	---
---	GAS	---	---	HYDRO POLE & LIGHT STANDARD	---	---	BARRIER CURB	---
---	COMMUNICATIONS	---	---	LIGHT STANDARD OR TRAFFIC SIGNAL	---	---	BARRIER CURB AND GUTTER	---
---	SIGNALS	---	---	HYDRO POLE / ANCHOR	---	---	PAVING STONE	---
○	MANHOLE	○	---	FENCE	---	---	CONCRETE SIDEWALK	---
□	CATCH BASIN/CATCH PIT	□	---	PROPERTY LINE	---	---	CONCRETE SLAB	---
△	CURB INLET	△	---	TEST HOLE / PAVEMENT CORE	---	---	ASPHALT	---
◇	UTILITIES ADJUSTED	◇	---	ELEVATIONS	---	---	MILLED SURFACE	---
◇	HYDRANT	◇	---	CURB RAMP	---	---	PAVEMENT REPAIR FABRIC	---
◇	LEGEND-PLAN	◇	---	DETECTABLE WARNING SURFACE TILE	---	---		

LOCATIONS APPROVED
UNDERGROUND STRUCTURES

SIGNED BY:
SUPPLY UNDERG. STRUCTURES

DATE

LOCATION OF UNDERGROUND STRUCTURES AS SHOWN ARE BASED ON THE BEST INFORMATION AVAILABLE BUT NO GUARANTEE IS GIVEN THAT ALL EXISTING UTILITIES ARE SHOWN OR THAT THE GIVEN LOCATIONS ARE EXACT CONFIRMATION OF EXISTENCE AND EXACT LOCATION OF ALL SERVICES MUST BE OBTAINED FROM THE INDIVIDUAL UTILITIES BEFORE PROCEEDING

G.B.M. TOH AT SOUTH-WEST CORNER OF NASSAU ST. SOUTH AND WALKER AVE.
ELEV. 232.805

NO.	REVISIONS	DATE	BY
H			
G			
F			
E			
D	ISSUED FOR ADDENDUM_4	2025/04/07	A.B.
C	ISSUED FOR TENDER	2025/03/20	A.B.
B	ISSUED FOR COW REVIEW	2025/03/19	A.B.
A	ISSUED FOR INTERNAL REVIEW	2025/03/12	A.B.



DESIGNED BY	A.B./E.M.	CHECKED BY	S.M.
DRAWN BY	A.B./E.M.	APPROVED BY	S.M.
HOR. SCALE	1:250	RELEASED FOR CONSTRUCTION	
VERTICAL	1:10		
DATE	JANUARY 2025	DATE	

WSP Canada Inc.
1600 Buffalo Place
Winnipeg, MB R3T 6B8
t. 204.477.6650
f. 204.474.2864
www.wsp.com

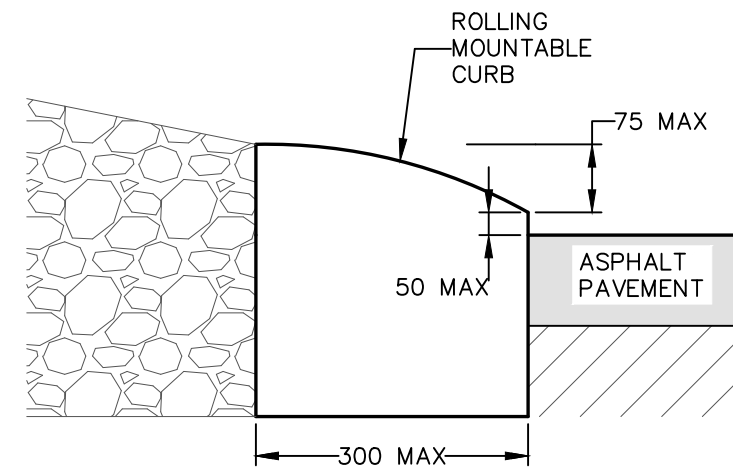
ENGINEER'S SEAL

CONSULTANT ACAD DWG. NO.
CA0043424.6934-58

NOTE: CHAINAGES SHOWN ARE ALONG
C OF RIGHT-OF-WAY

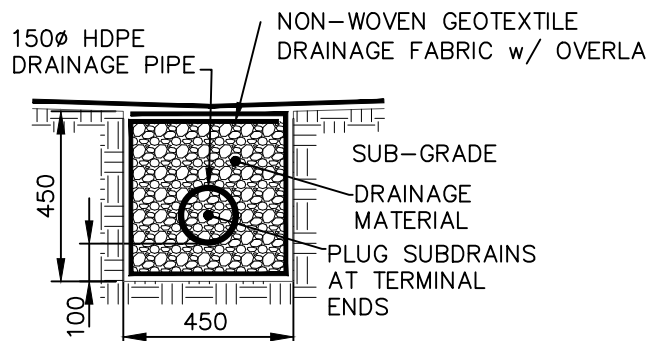
FOR TENDER PURPOSES ONLY
NOT FOR CONSTRUCTION

- NOTES:
1. ALL WORK AND MATERIALS TO BE IN ACCORDANCE WITH THE LATEST REVISION OF THE CITY OF WINNIPEG STANDARD CONSTRUCTION SPECIFICATIONS.
 2. CONTRACTOR TO CONFIRM THE LOCATION OF ALL UTILITIES/SERVICES IN THE FIELD PRIOR TO CONSTRUCTION.
 3. ALL ROADWAY DIMENSIONS SHOWN ARE TO EDGE OF PAVEMENT.
 4. EXISTING ASPHALT TO BE PLANED AS SHOWN OR AS DIRECTED BY CONTRACT ADMINISTRATOR.
 5. 150mm PARTIAL CONCRETE SLAB PATCHES SHOWN ARE ONLY A REPRESENTATIVE APPROXIMATION OF THE TENDERED QUANTITIES.
 6. EXISTING SIDEWALK TO BE RENEWED AS PER SD-228A AND AS DIRECTED BY CONTRACT ADMINISTRATOR.
 7. RENEW EXISTING CURB AS DIRECTED BY CONTRACT ADMINISTRATOR.
 8. ALL PRIVATE WALKWAYS TO BE ADJUSTED TO NEW SIDEWALK OR TOP OF CURB ELEVATION, AS DIRECTED BY THE CONTRACT ADMINISTRATOR.
 9. PAVEMENT REPAIR FABRIC TO BE INSTALLED AS SHOWN OR AS DIRECTED BY CONTRACT ADMINISTRATOR.
 10. MODIFIED BARRIER CURB TO BE CONSTRUCTED AT ALL RADIIAS DIRECTED BY CONTRACT ADMINISTRATOR.
 11. CONTRACTORS TO TAKE PRECAUTIONARY STEPS TO PROTECT EXISTING TREES WITHIN THE LIMITS OF CONSTRUCTION FROM DAMAGE FROM CONSTRUCTION ACTIVITIES AS OUTLINED IN THE SPECIFICATIONS.
 12. LAMP STANDARDS, HYDRO POLES, AND ANCHORS THAT REQUIRE TEMPORARY SUPPORT, REMOVAL OR REPLACEMENT, TO BE DONE SO AT THE EXPENSE OF THE CONTRACTOR AS NECESSARY.
 13. ALL BOULEVARDS TO BE SODDED UNLESS OTHERWISE NOTED.
 14. ADJUST ALL WATER VALVES, HYDRANTS, MANHOLES, AND CATCH BASINS IN WORK AREA TO GRADE.



TYPICAL MOUNTABLE LIP CURB DETAIL

NTS

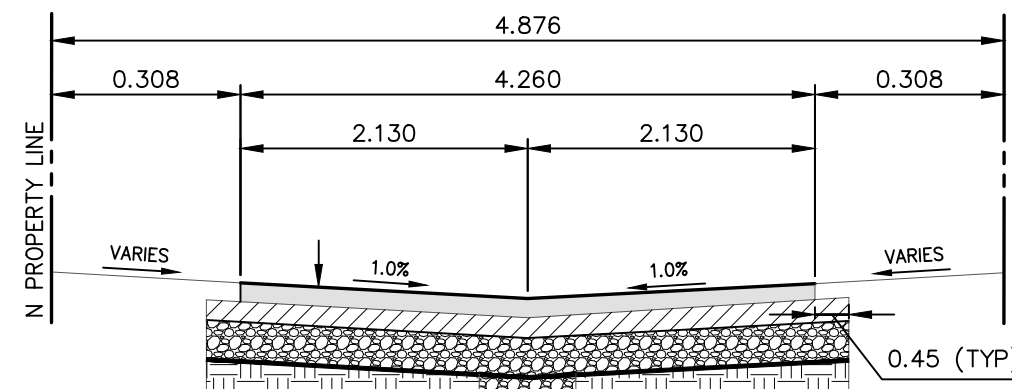


REFERENCE SPECIFICATIONS

1. SUB-GRADE, SUB-BASE AND BASE MATERIAL SHALL BE SUPPLIED AND PLACED IN ACCORDANCE WITH CW-3110
2. INSTALLATION OF SUBDRAINS SHALL BE IN ACCORDANCE WITH CW-3120
3. DRAINAGE GEOTEXTILE FABRIC AND DRAINAGE PIPE SHALL CONFORM TO "APPROVED PRODUCTS FOR SURFACE WORKS"

TYPICAL ALLEY SUBDRAIN DETAIL

NTS



TYPICAL CROSS-SECTION

NTS

METRIC

WHOLE NUMBERS INDICATE MILLIMETRES
DECIMALIZED NUMBERS INDICATE METRES

**ENGINEERS
GEOSCIENTISTS
MANITOBA**
Certificate of Authorization
WSP Canada Inc.
No. 5750



THE CITY OF WINNIPEG
PUBLIC WORKS DEPARTMENT
ENGINEERING SERVICES DIVISION

2025 LOCAL STREET ALLEY RENEWALS

WALKER AVE./RATHGAR AVE. EAST-WEST ALLEY

ALLEY RECONSTRUCTION
STA. 2+17.50 TO STA. 3+41.99

CITY DRAWING NUMBER

SHEET 11 OF 15

TENDER NO.
227-2025