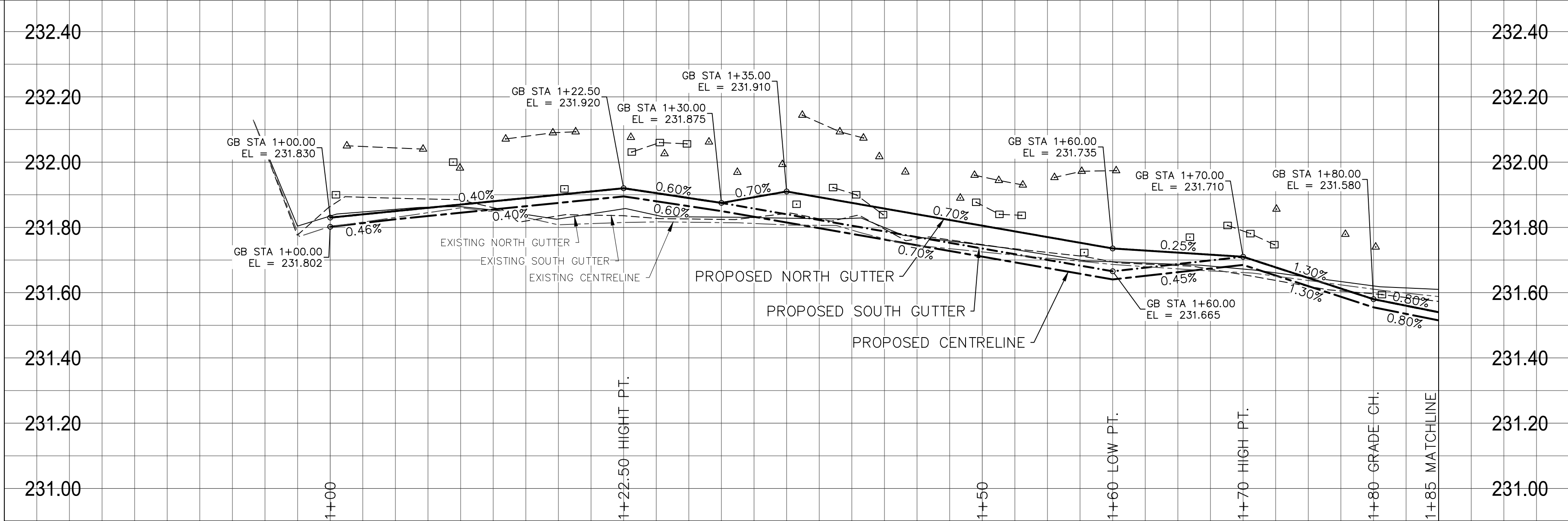
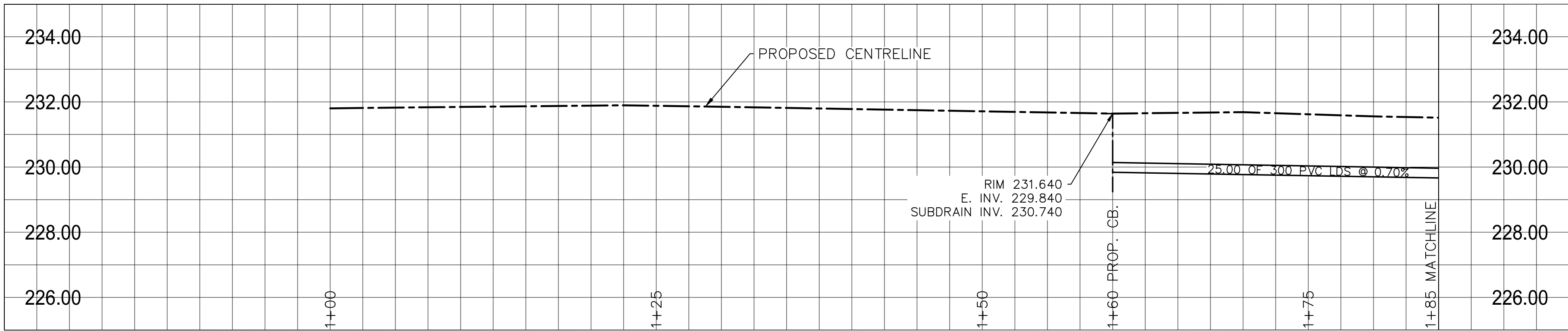


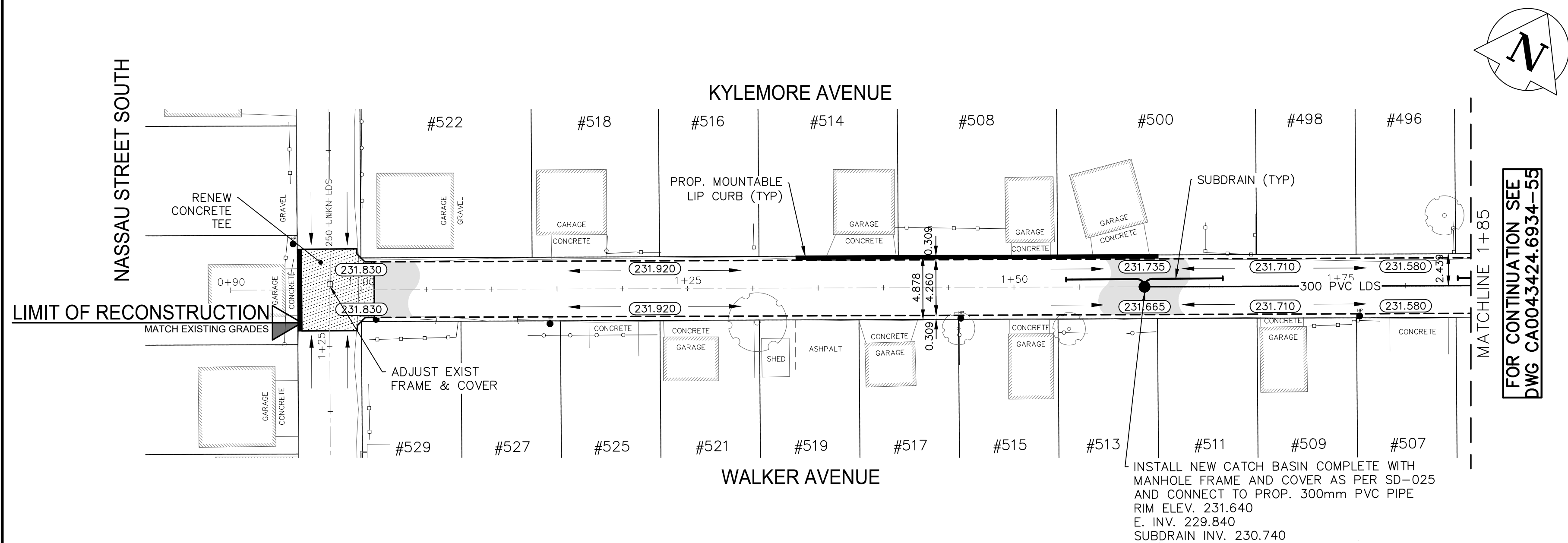
Apr 07, 2025 - 2:31pm
P:\2024\CA0043424.6934 - CA-25-R-04 Local Streets\02 Drawings\03_Work_Dwg\CA0043424.6934_CA_25-R-04_Kylemore_Walker_Alley_Plan&Profile.dwg -tob:227-2025_CA0043424.6934_54-RD



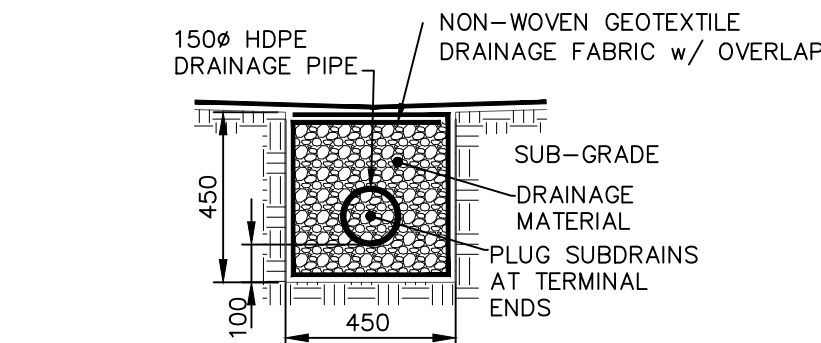
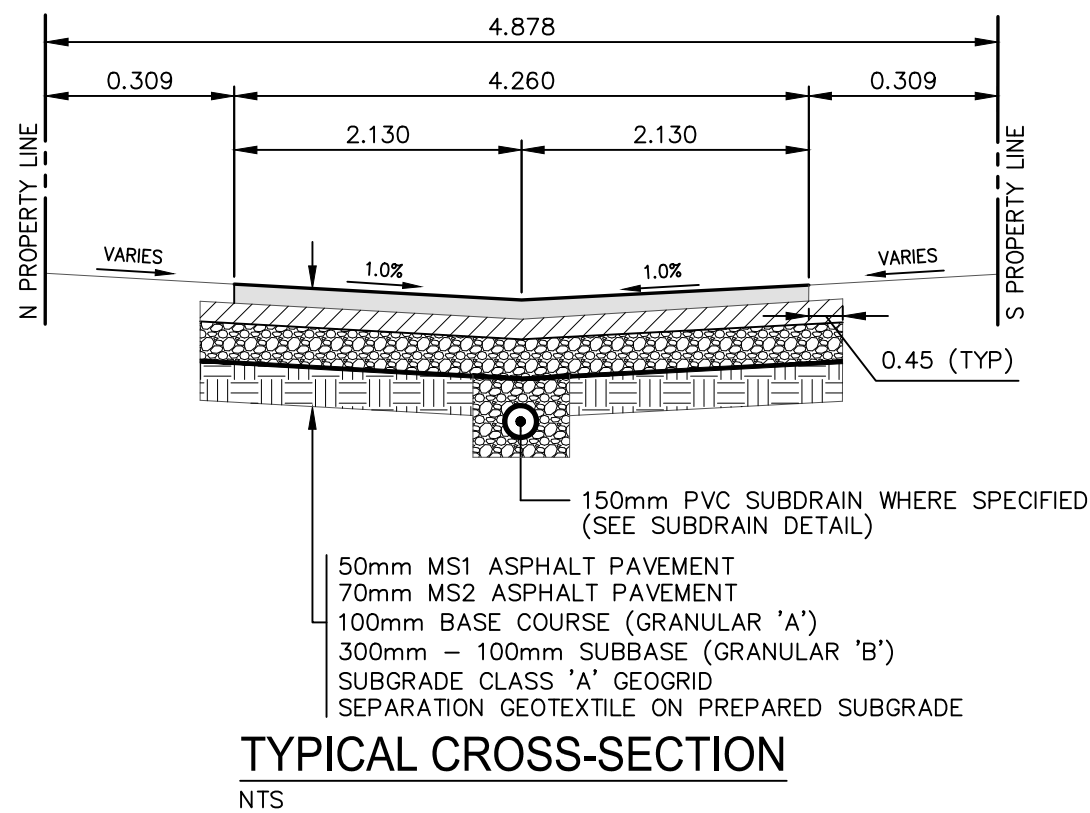
ALLEY PAVEMENT PROFILE
SCALE: 1:250 HOR
1:10 VER



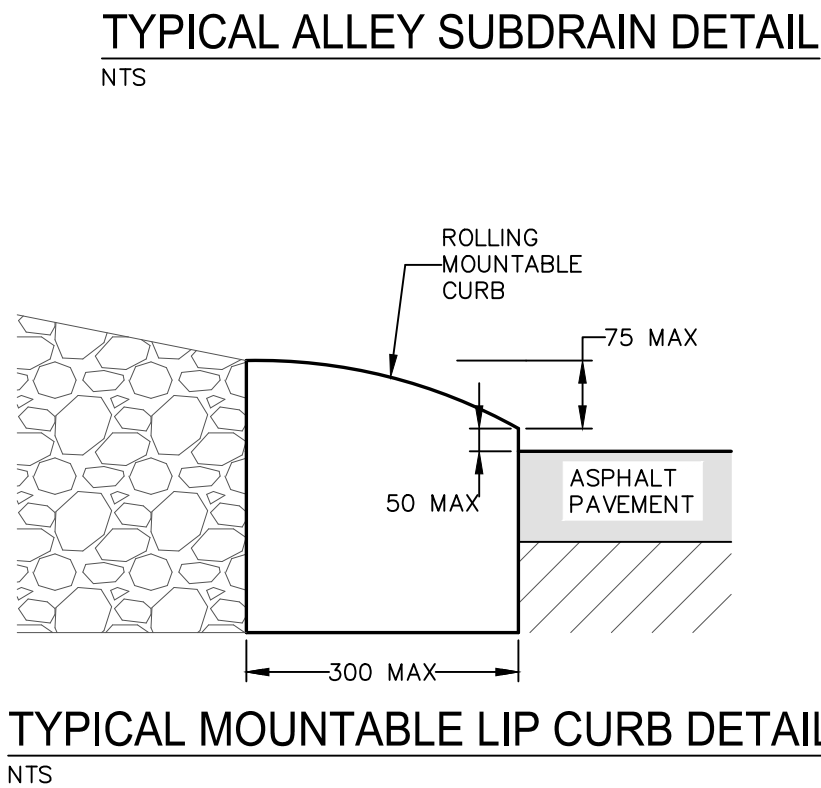
LAND DRAINAGE SEWER PROFILE
SCALE: 1:250 HOR
1:100 VER



- NOTES:
1. ALL WORK AND MATERIALS TO BE IN ACCORDANCE WITH THE LATEST REVISION OF THE CITY OF WINNIPEG STANDARD CONSTRUCTION SPECIFICATIONS.
 2. CONTRACTOR TO CONFIRM THE LOCATION OF ALL UTILITIES/SERVICES IN THE FIELD PRIOR TO CONSTRUCTION.
 3. ALL ROADWAY DIMENSIONS SHOWN ARE TO EDGE OF PAVEMENT.
 4. EXISTING ASPHALT TO BE PLANED AS SHOWN OR AS DIRECTED BY CONTRACT ADMINISTRATOR.
 5. 150mm PARTIAL CONCRETE SLAB PATCHES SHOWN ARE ONLY A REPRESENTATIVE APPROXIMATION OF THE TENDERED QUANTITIES.
 6. EXISTING SIDEWALK TO BE RENEWED AS PER SD-228A AND AS DIRECTED BY CONTRACT ADMINISTRATOR.
 7. RENEW EXISTING CURB AS DIRECTED BY CONTRACT ADMINISTRATOR.
 8. ALL PRIVATE WALKWAYS TO BE ADJUSTED TO NEW SIDEWALK OR TOP OF CURB ELEVATION, AS DIRECTED BY THE CONTRACT ADMINISTRATOR.
 9. PAVEMENT REPAIR FABRIC TO BE INSTALLED AS SHOWN OR AS DIRECTED BY CONTRACT ADMINISTRATOR.
 10. MODIFIED BARRIER CURB TO BE CONSTRUCTED AT ALL RADII AS DIRECTED BY CONTRACT ADMINISTRATOR.
 11. CONTRACTOR TO TAKE PRECAUTIONARY STEPS TO PROTECT EXISTING TREES WITHIN THE LIMITS OF CONSTRUCTION FROM DAMAGE FROM CONSTRUCTION ACTIVITIES AS OUTLINED IN THE SPECIFICATIONS.
 12. LAMP STANDARDS, HYDRO POLES, AND ANCHORS THAT REQUIRE TEMPORARY SUPPORT, REMOVAL OR REPLACEMENT, TO BE DONE SO AT THE EXPENSE OF THE CONTRACTOR AS NECESSARY.
 13. ALL BOULEVARDS TO BE SODDED UNLESS OTHERWISE NOTED.
 14. ADJUST ALL WATER VALVES, HYDRANTS, MANHOLES, AND CATCH BASINS IN WORK AREA TO GRADE.



- REFERENCE SPECIFICATIONS
1. SUB-GRADE, SUB-BASE AND BASE MATERIAL SHALL BE SUPPLIED AND PLACED IN ACCORDANCE WITH CW-3110
 2. INSTALLATION OF SUBDRAINS SHALL BE IN ACCORDANCE WITH CW-3120
 3. DRAINAGE GEOTEXTILE FABRIC AND DRAINAGE PIPE SHALL CONFORM TO "APPROVED PRODUCTS FOR SURFACE WORKS"



METRIC

WHOLE NUMBERS INDICATE MILLIMETRES
DECIMALIZED NUMBERS INDICATE METRES

**ENGINEERS
GEOSCIENTISTS
MANITOBA**
Certificate of Authorization
WSP Canada Inc.
No. 5750

NOTE: CHAINAGES SHOWN ARE ALONG
℄ OF RIGHT-OF-WAY

FOR TENDER PURPOSES ONLY
NOT FOR CONSTRUCTION

EXISTING	LEGEND-PLAN	PROPOSED	EXISTING	LEGEND-PLAN	PROPOSED	EXISTING	LEGEND-PLAN	PROPOSED
—△—△—	NORTH/WEST GARAGE APPROACH	—△—△—	—△—△—	NORTH/WEST GARAGE APPROACH	—△—△—	—△—△—	NORTH/WEST GARAGE APPROACH	—△—△—
—□—□—	SOUTH/EAST GARAGE APPROACH	—□—□—	—□—□—	SOUTH/EAST GARAGE APPROACH	—□—□—	—□—□—	SOUTH/EAST GARAGE APPROACH	—□—□—
—○—○—	VALVE	—○—○—	—○—○—	VALVE	—○—○—	—○—○—	VALVE	—○—○—
—●—●—	CURB STOP	—●—●—	—●—●—	CURB STOP	—●—●—	—●—●—	CURB STOP	—●—●—
—●—●—	HYDRO POLE & LIGHT STANDARD	—●—●—	—●—●—	HYDRO POLE & LIGHT STANDARD	—●—●—	—●—●—	HYDRO POLE & LIGHT STANDARD	—●—●—
—●—●—	LIGHT STANDARD OR TRAFFIC SIGNAL	—●—●—	—●—●—	LIGHT STANDARD OR TRAFFIC SIGNAL	—●—●—	—●—●—	LIGHT STANDARD OR TRAFFIC SIGNAL	—●—●—
—●—●—	HYDRO POLE / ANCHOR	—●—●—	—●—●—	HYDRO POLE / ANCHOR	—●—●—	—●—●—	HYDRO POLE / ANCHOR	—●—●—
—●—●—	FENCE	—●—●—	—●—●—	FENCE	—●—●—	—●—●—	FENCE	—●—●—
—●—●—	PROPERTY LINE	—●—●—	—●—●—	PROPERTY LINE	—●—●—	—●—●—	PROPERTY LINE	—●—●—
—●—●—	IRON BAR	—●—●—	—●—●—	IRON BAR	—●—●—	—●—●—	IRON BAR	—●—●—
—●—●—	TEST HOLE / PAVEMENT CORE	—●—●—	—●—●—	TEST HOLE / PAVEMENT CORE	—●—●—	—●—●—	TEST HOLE / PAVEMENT CORE	—●—●—
—●—●—	ELEVATIONS	—●—●—	—●—●—	ELEVATIONS	—●—●—	—●—●—	ELEVATIONS	—●—●—
—●—●—	CURB RAMP	—●—●—	—●—●—	CURB RAMP	—●—●—	—●—●—	CURB RAMP	—●—●—
—●—●—	DETECTABLE WARNING SURFACE TILE	—●—●—	—●—●—	DETECTABLE WARNING SURFACE TILE	—●—●—	—●—●—	DETECTABLE WARNING SURFACE TILE	—●—●—

LOCATIONS APPROVED UNDERGROUND STRUCTURES

SIGNED BY: _____ DATE: _____
SUPV UG STRUCTURES

LOCATION OF UNDERGROUND STRUCTURES AS SHOWN ARE BASED ON THE BEST INFORMATION AVAILABLE BUT NO GUARANTEE IS GIVEN THAT ALL EXISTING UTILITIES ARE SHOWN OR THAT THE GIVEN LOCATIONS ARE EXACT CONFIRMATION OF EXISTENCE AND EXACT LOCATION OF ALL SERVICES MUST BE OBTAINED FROM THE INDIVIDUAL UTILITIES BEFORE PROCEEDING

G.B.M. TOH AT SOUTH-WEST CORNER OF NASSAU ST. SOUTH AND WALKER AVE.
ELEV. 232.805

NO.	REVISIONS	DATE	BY
H			
G			
F			
E			
D	ISSUED FOR ADDENDUM_4	2025/04/07	A.B.
C	ISSUED FOR TENDER	2025/03/20	A.B.
B	ISSUED FOR COW REVIEW	2025/03/19	A.B.
A	ISSUED FOR INTERNAL REVIEW	2025/03/12	A.B.

DESIGNED BY	A.B./E.M.	CHECKED BY	S.M.
DRAWN BY	A.B./E.M.	APPROVED BY	S.M.
HOR. SCALE	1:250	RELEASED FOR CONSTRUCTION	
VERTICAL	1:10		
DATE	JANUARY 2025	DATE	

CONSULTANT ACAD DWG. NO.	CA0043424.6934-54
--------------------------	-------------------

THE CITY OF WINNIPEG PUBLIC WORKS DEPARTMENT ENGINEERING SERVICES DIVISION	CITY DRAWING NUMBER
2025 LOCAL STREET ALLEY RENEWALS KYLEMORE AVE./WALKER AVE. EAST-WEST ALLEY	SHEET 7 OF 15
ALLEY RECONSTRUCTION STA. 0+95 TO STA. 1+85	TENDER NO. 227-2025