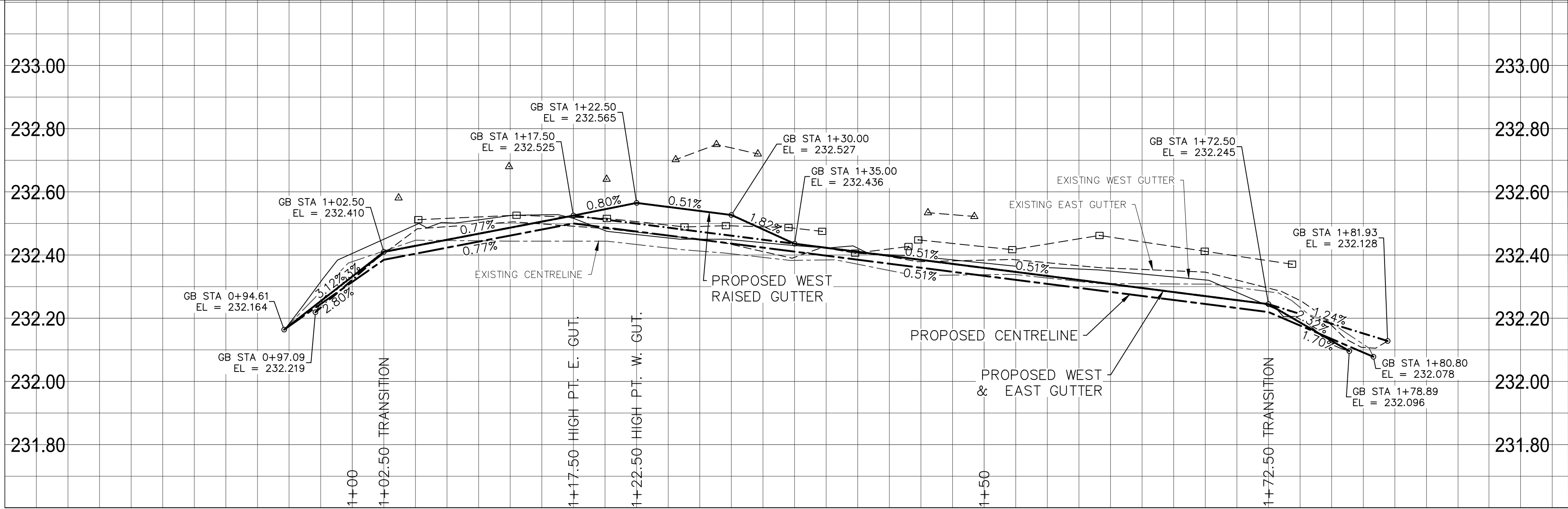
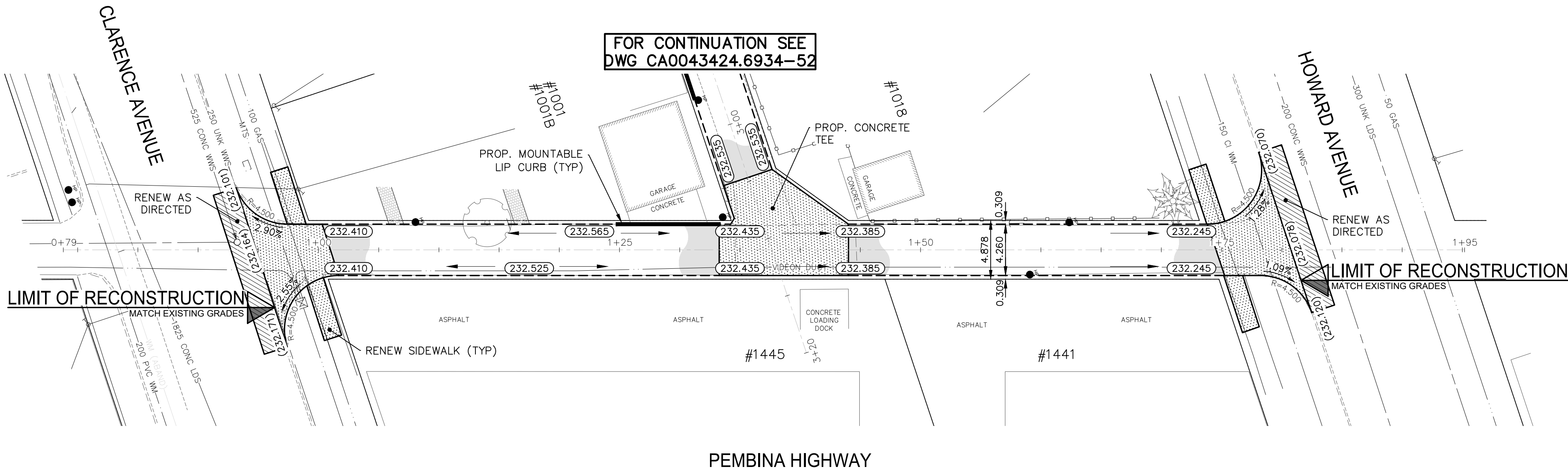
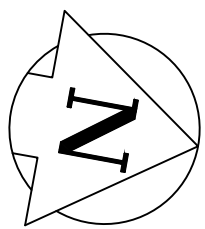


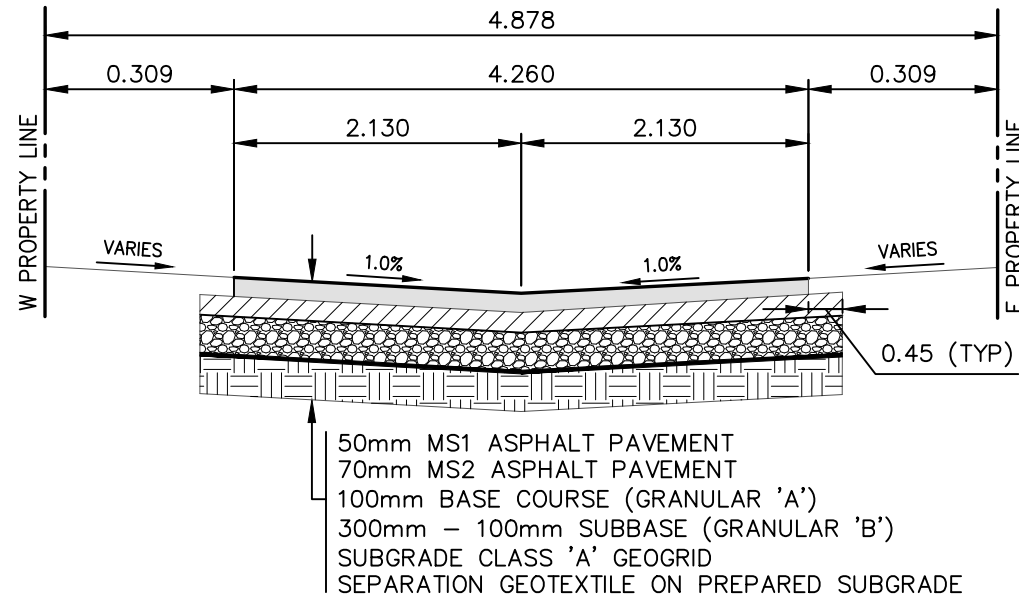
Apr 07, 2025 - 2:31pm  
P:\2024\CA0043424.6934 - CA-25-R-04 Local Streets\02 Drawings\03 Work\_Dwg CA0043424.6934\_CA\_25-R-04\_Howard\_Clarence\_Alley\_Plan&Profile.dwg -Tab:227-2025\_CA0043424.6934\_53-RD



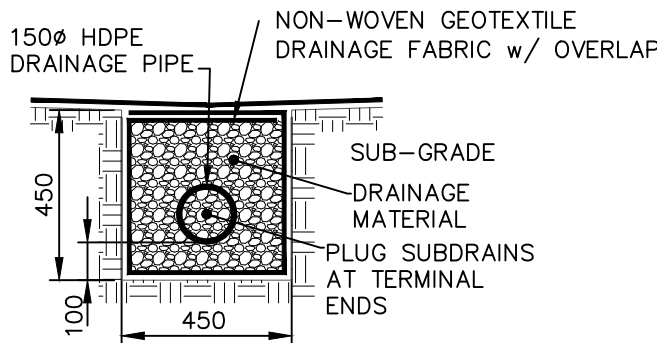
ALLEY PAVEMENT PROFILE  
SCALE: 1:250 HOR  
1:10 VER



- NOTES:
1. ALL WORK AND MATERIALS TO BE IN ACCORDANCE WITH THE LATEST REVISION OF THE CITY OF WINNIPEG STANDARD CONSTRUCTION SPECIFICATIONS.
  2. CONTRACTOR TO CONFIRM THE LOCATION OF ALL UTILITIES/SERVICES IN THE FIELD PRIOR TO CONSTRUCTION.
  3. ALL ROADWAY DIMENSIONS SHOWN ARE TO EDGE OF PAVEMENT.
  4. EXISTING ASPHALT TO BE PLANED AS SHOWN OR AS DIRECTED BY CONTRACT ADMINISTRATOR.
  5. 150mm PARTIAL CONCRETE SLAB PATCHES SHOWN ARE ONLY A REPRESENTATIVE APPROXIMATION OF THE TENDERED QUANTITIES.
  6. EXISTING SIDEWALK TO BE RENEWED AS PER SD-228A AND AS DIRECTED BY CONTRACT ADMINISTRATOR.
  7. RENEW EXISTING CURBS AS DIRECTED BY CONTRACT ADMINISTRATOR.
  8. ALL PRIVATE WALKWAYS TO BE ADJUSTED TO NEW SIDEWALK OR TOP OF CURB ELEVATION, AS DIRECTED BY THE CONTRACT ADMINISTRATOR.
  9. PAVEMENT REPAIR FABRIC TO BE INSTALLED AS SHOWN OR AS DIRECTED BY CONTRACT ADMINISTRATOR.
  10. MODIFIED BARRIER CURB TO BE CONSTRUCTED AT ALL RADI AS DIRECTED BY CONTRACT ADMINISTRATOR.
  11. CONTRACTORS TO TAKE PRECAUTIONARY STEPS TO PROTECT EXISTING TREES WITHIN THE LIMITS OF CONSTRUCTION FROM DAMAGE FROM CONSTRUCTION ACTIVITIES AS OUTLINED IN THE SPECIFICATIONS.
  12. LAMP STANDARDS, HYDRO POLES, AND ANCHORS THAT REQUIRE TEMPORARY SUPPORT, REMOVAL OR REPLACEMENT, TO BE DONE SO AT THE EXPENSE OF THE CONTRACTOR AS NECESSARY.
  13. ALL BOULEVARDS TO BE SODDED UNLESS OTHERWISE NOTED.
  14. ADJUST ALL WATER VALVES, HYDRANTS, MANHOLES, AND CATCH BASINS IN WORK AREA TO GRADE.

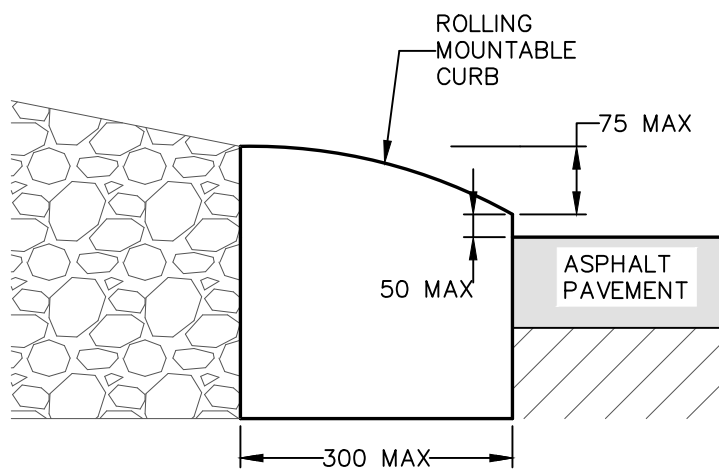


TYPICAL CROSS-SECTION  
NTS



- REFERENCE SPECIFICATIONS
1. SUB-GRADE, SUB-BASE AND BASE MATERIAL SHALL BE SUPPLIED AND PLACED IN ACCORDANCE WITH CW-3110.
  2. INSTALLATION OF SUBDRAINS SHALL BE IN ACCORDANCE WITH CW-3120.
  3. DRAINAGE GEOTEXTILE FABRIC AND DRAINAGE PIPE SHALL CONFORM TO "APPROVED PRODUCTS FOR SURFACE WORKS"

TYPICAL ALLEY SUBDRAIN DETAIL  
NTS



TYPICAL MOUNTABLE LIP CURB DETAIL  
NTS

## METRIC

WHOLE NUMBERS INDICATE MILLIMETRES  
DECIMALIZED NUMBERS INDICATE METRES

**ENGINEERS  
GEOSCIENTISTS  
MANITOBA**  
Certificate of Authorization  
WSP Canada Inc.  
No. 5750

FOR TENDER PURPOSES ONLY  
NOT FOR CONSTRUCTION

NOTE: CHAINAGES SHOWN ARE ALONG  
C OF RIGHT-OF-WAY

EXISTING	LEGEND-PLAN	PROPOSED	EXISTING	LEGEND-PLAN	PROPOSED	EXISTING	LEGEND-PLAN	PROPOSED
---	WATER MAIN	---	---	NORTH/WEST GARAGE APPROACH	---	---	---	---
---	LAND DRAINAGE SEWER	---	---	SOUTH/EAST GARAGE APPROACH	---	---	---	---
---	WASTE WATER SEWER	---	---	VALVE	---	---	---	---
---	HYDRO	---	---	CURB STOP	---	---	---	---
---	GAS	---	---	HYDRO POLE & LIGHT STANDARD	---	---	---	---
---	COMMUNICATIONS	---	---	LIGHT STANDARD OR TRAFFIC SIGNAL	---	---	---	---
---	SIGNALS	---	---	HYDRO POLE / ANCHOR	---	---	---	---
---	MANHOLE	---	---	FENCE	---	---	---	---
---	CATCH BASIN/CATCH PIT	---	---	PROPERTY LINE	---	---	---	---
---	CURB INLET	---	---	IRON BAR	---	---	---	---
---	UTILITIES ADJUSTED	---	---	TEST HOLE / PAVEMENT CORE	---	---	---	---
---	HYDRANT	---	---	ELEVATIONS	---	---	---	---
---	---	---	---	CURB RAMP	---	---	---	---
---	---	---	---	DETECTABLE WARNING SURFACE TILE	---	---	---	---

### LOCATIONS APPROVED UNDERGROUND STRUCTURES

SIGNED BY:  
SUPV UG STRUCTURES

DATE

LOCATION OF UNDERGROUND STRUCTURES AS SHOWN ARE BASED ON THE BEST INFORMATION AVAILABLE BUT NO GUARANTEE IS GIVEN THAT ALL EXISTING UTILITIES ARE SHOWN OR THAT THE GIVEN LOCATIONS ARE EXACT CONFIRMATION OF EXISTANCE AND EXACT LOCATION OF ALL SERVICES MUST BE OBTAINED FROM THE INDIVIDUAL UTILITIES BEFORE PROCEEDING

G.B.M.  
ELEV. 232.296

TOH IN FRONT OF HOUSE 341 HUDSON ST.

NO.	REVISIONS	DATE	BY
H			
G			
F			
E			
D	ISSUED FOR ADDENDUM_4	2025/04/07	A.B.
C	ISSUED FOR TENDER	2025/03/20	A.B.
B	ISSUED FOR COW REVIEW	2025/03/19	A.B.
A	ISSUED FOR INTERNAL REVIEW	2025/03/12	A.B.



WSP Canada Inc.  
1600 Buffalo Place  
Winnipeg, MB R3T 6B8  
t. 204.477.6650  
f. 204.474.2864  
www.wsp.ca.com

ENGINEER'S SEAL

DESIGNED BY  
A.B./E.M.

CHECKED BY  
S.M.

DRAWN BY  
A.B./E.M.

APPROVED BY  
S.M.

HOR. SCALE  
1:250

VERTICAL  
1:10

RELEASED FOR  
CONSTRUCTION

CONSULTANT ACAD DWG. NO.  
CA0043424.6934-53

THE CITY OF WINNIPEG  
PUBLIC WORKS DEPARTMENT  
ENGINEERING SERVICES DIVISION

2025 LOCAL STREET ALLEY RENEWALS

HOWARD AVE./CLARENCE AVE. SOUTH-NORTH  
ALLEY

ALLEY RECONSTRUCTION  
STA. 0+94.61 TO STA. 1+81.93

CITY DRAWING NUMBER

SHEET 6 OF 15

TENDER NO.  
227-2025