

CONSTRUCTION NOTES:

- ALL WORK AND MATERIALS TO BE IN ACCORDANCE WITH LATEST REVISION OF THE CITY OF WINNIPEG STANDARD CONSTRUCTION SPECIFICATIONS.
- LEGAL PLAN AND UNDERGROUND INFORMATION FROM CITY OF WINNIPEG LBIS.
- CONTRACTOR TO TAKE PRECAUTIONARY STEPS TO AVOID DAMAGE FROM CONSTRUCTION ACTIVITIES TO TREES WITHIN THE LIMITS OF CONSTRUCTION. REFER TO SPECIFICATION E6 PROTECTION OF EXISTING TREES.
- LOCATION OF EXISTING UTILITIES/SERVICES TO BE CONFIRMED IN THE FIELD BY THE CONTRACTOR.
- ADJUST EXISTING WATER VALVES AND WATER SERVICE CURB STOPS TO GRADE. WATER SERVICES TO BE INSULATED AS PER SD-018 WITH 100mm THICK x 2700mm WIDE TOP OF INSULATION OR RENEWED/INSULATED AS INDICATED ON PLAN IN ACCORDANCE TO CW-2110. VALVES TO BE OPERATED BY CITY OF WINNIPEG CREWS.
- MODIFIED BARRIER CURB SD-203C TO BE USED AT ALL INTERSECTION RADII.
- LIMITS OF SIDEWALK RECONSTRUCTION TO BE FINALIZED IN THE FIELD BY THE CONTRACT ADMINISTRATOR. INSTALL SIDEWALK EXPANSION JOINTS AS PER SD-228AA. CONTRACT ADMINISTRATOR WILL LAY OUT FINAL LOCATIONS OF SIDEWALK EXPANSION JOINTS.
- ADJUST MANHOLE AND CATCH BASIN RIMS TO NEW GRADES. REMOVE AND REPLACE ALL MANHOLE FRAMES AND COVERS IN PAVEMENT. REPAIR/REPLACE BENCHING AND RISERS AS DIRECTED BY THE CONTRACT ADMINISTRATOR.
- CONSTRUCT SIDEWALK CONNECTIONS TO PRIVATE APPROACHES AS PER SD-228A TO LIMITS AS SHOWN. ALL PRIVATE SIDEWALKS TO BE ADJUSTED TO NEW SIDEWALK OR TOP OF CURB ELEVATIONS AS REQUIRED. SIDEWALKS TO BE REPLACED WITH LIKE MATERIALS.
- CB LEADS AND CP LEADS TO BE INSTALLED TO INVERT ELEVATIONS AS SHOWN. ALL CB LEADS TO BE INSTALLED AT MIN 1.0% SLOPE AND AS DIRECTED BY CONTRACT ADMINISTRATOR. ALL CP LEADS TO BE INSTALLED AT MIN 2.0% SLOPE AND AS DIRECTED BY CONTRACT ADMINISTRATOR.
- LIMITS OF BOULEVARD GRADING TO BE FINALIZED IN THE FIELD BY THE CONTRACT ADMINISTRATOR.
- CONTRACTOR TO CONFIRM LOCATION AND LIMITS OF SEWER REPAIRS AS INDICATED ON THE DRAWINGS BY PERFORMING VIDEO INSPECTION AND REVIEWING WITH THE CONTRACT ADMINISTRATOR PRIOR TO CONSTRUCTION.
- LAMP STANDARDS, HYDRO POLES AND ANCHORS THAT REQUIRE TEMPORARY SUPPORT, REMOVAL OR REPLACEMENT, TO BE DONE AT THE EXPENSE OF THE CONTRACTOR, AS NECESSARY. REFER TO SPECIFICATION E24-WORKING AROUND MANITOBA HYDRO POLES.
- INSTALL 6.0 m OF 150 mm SUBDRAIN TO CATCH BASINS IN BOTH DIRECTIONS WITH END CAPS PARALLEL TO ROADWAY AS PER SD-245 OR AS NOTED.
- COMPLETE CATCH BASIN/CATCH PIT CURB AND GUTTER INLET ISOLATIONS IN ACCORDANCE WITH SD-220D DETAILS.
- CONSTRUCT 150 EXPOSED FACE BARRIER CURB AS PER SD-200A, OR AS OTHERWISE NOTED.
- CONSTRUCT 75 LIP CURB WITH INTEGRAL APPROACH SD-202CA.
- SIDEWALK RENEWALS TO PROVIDE 2.0% CROSSFALL TOWARDS ROAD OR AS NOTED.
- ADD 200.000 TO ABBREVIATED ELEVATIONS TO OBTAIN GEODETIC ELEVATIONS.
- ALL DIMENSIONS ARE TO BACK OF CURB.

TENDER  
DRAWING

NOT TO BE  
USED FOR  
CONSTRUCTION

ENGINEERS  
GEOSCIENTISTS  
MANITOBA

Certificate of Authorization  
Tetra Tech Canada Inc.  
No. 6499

TENDER #201-2025

METRIC

WHOLE NUMBERS INDICATE MILLIMETRES  
DECIMALIZED NUMBERS INDICATE METRES

THE CITY OF WINNIPEG  
PUBLIC WORKS DEPARTMENT  
ENGINEERING DIVISION

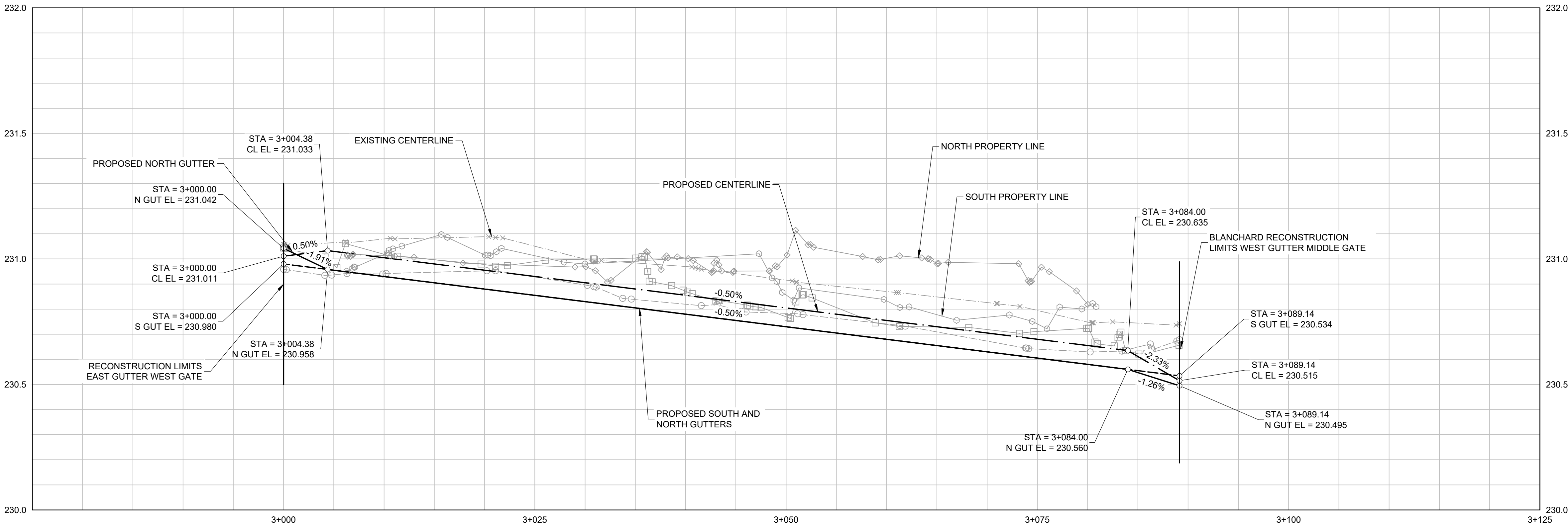


2025 LOCAL STREETS RENEWAL PROGRAM  
MIDDLE GATE AND VARIOUS LOCATIONS

ASPHALT RECONSTRUCTION  
BLANCHARD AVENUE (STA 3+000 TO 3+089.14)  
PLAN AND PROFILE

CITY DRAWING NUMBER  
P-3593-9  
SHEET 9 OF 12  
DWG. NO.

C0009



WEST GATE

MIDDLE GATE

BLANCHARD AVE

CONTROL LINE GEOMETRY COORDINATES		
POINT/STATION	NORTHING	EASTING
BP/POT 3+000.00	5526498.824	632388.254
PI 3+030.90	5526515.324	632414.374
EP/POT 3+089.14	5526546.002	632463.886

	HYDRANT		CONCRETE		150 WM	WATERMAIN	
	VALVE		ASPHALT-RECONSTRUCTION		300 LBS	LAND DRAINAGE SEWER	
	MANHOLE		ASPHALT-REHABILITATION		250 WWS	WASTE WATER SEWER	
	CATCH BASIN		SIDEWALK		150 WM	HYDRANT	
	CATCH PIT		PAVING STONES		300 LBS	VALVE	
	WATERMAIN		STAMPED CONCRETE		250 WWS	Q PROFILE	
	LAND DRAINAGE SEWER		PROPERTY LINE		232.000	NORTH/WEST GUTTER	
	WASTE WATER SEWER		ELEVATION		232.000	SOUTH/EAST GUTTER	
	HYDRO		CURB RAMP		150 WM	NORTH/WEST PROPERTY LINE	
	M.T.S.		LSI/HP		250 WWS	SOUTH/EAST PROPERTY LINE	
	GAS				150 WM		
EXISTING	LEGEND-PLAN	PROPOSED	EXISTING	LEGEND-PLAN	PROPOSED	EXISTING	LEGEND-PROFILE

UNDERGROUND STRUCTURES

LOCATION OF UNDERGROUND STRUCTURES AS SHOWN ARE BASED ON THE BEST INFORMATION AVAILABLE. BUT NO GUARANTEE IS GIVEN THAT ALL EXISTING UTILITIES ARE SHOWN OR THAT THE GIVEN LOCATIONS ARE EXACT. CONFIRMATION OF EXISTENCE AND EXACT LOCATION OF ALL SERVICES MUST BE OBTAINED FROM THE INDIVIDUAL UTILITIES BEFORE PROCEEDING WITH CONSTRUCTION.



DESIGNED BY	RL	REVIEWED BY	DL
DRAWN BY	CF	APPROVED BY	JC
SCALE:	H = 1:250 V = 1:10	RELEASED FOR CONSTRUCTION	
0 ISSUED FOR TENDER	25.04.04	JC	
NO. REVISIONS	DATE	BY	DATE
	2025.04.04		



CONSULTANT DRAWING NO.  
704-INF-MB03019-01-DWG-C0009