

# VENTILATION GENERAL NOTES:

- DO NOT SCALE THE DRAWING.
- PROVIDE COMPLETE HVAC SYSTEM TO SERVE SPACES AS NOTED ON THE DRAWING IN ACCORDANCE WITH THE NATIONAL BUILDING CODE AS WELL AS ANY REQUIREMENTS OF THE AUTHORITY HAVING JURISDICTION.
- LOCATION OF DIFFUSERS AND GRILLES SHOWN ON DRAWING ARE APPROXIMATE ONLY. COORDINATE WITH ELECTRICAL LIGHTING LAYOUT AND ARCHITECTURAL REFLECTED CEILING PLAN FOR EXACT LOCATIONS.
- CONTRACTOR SHALL CONFIRM AND COORDINATE THE LOCATION AND ROUTE OF ALL EQUIPMENT, PIPING AND DUCTWORK ON SITE AND WITH OTHER TRADES.
- DIFFUSERS AND GRILLES SHALL HAVE UPSTREAM BALANCING DAMPERS.
- PROVIDE TURNING VANES IN EACH RECTANGULAR ELBOW. TAKE-OFFS TO HAVE ENLARGED THROATS WITH LEADING EDGES.
- FIRE DAMPERS AND/OR SMOKE DAMPERS SHALL BE INSTALLED ON ALL DUCTWORK PENETRATING FIRE SEPARATION AND/OR SMOKE SEPARATION FLOOR, SLABS AND WALLS. REFER TO ARCHITECTURAL LIFE SAFETY PLAN FOR ALL FIRE/SMOKE SEPARATIONS.
- COORDINATE THERMOSTAT LOCATIONS WITH FURNITURE, ETC.

- VARIATIONS FROM THE SPECIFIED PRODUCTS AND ASSOCIATED WORK REQUIREMENTS ARE THE RESPONSIBILITY OF THE CONTRACTOR. ADDITIONAL COMPENSATION WILL NOT BE CONSIDERED BECAUSE OF DIFFERENCES IN INTERPRETATION OF TECHNICAL PROVISIONS.
- CONTRACTOR WILL TAKE NECESSARY PRECAUTIONS TO AVOID DAMAGING NEW AND EXISTING EQUIPMENT AND DUCTWORK OVER THE COURSE OF CONSTRUCTION.
- CONTRACTOR TO PROVIDE DUCTING SUPPORTS.
- COORDINATE WITH GENERAL CONTRACTOR REQUIRED ACCESS HATCH/PANELS FOR MECHANICAL EQUIPMENT CONCEALED ABOVE INACCESSIBLE CEILINGS AND WITHIN WALLS. MAKE EFFORT TO LOCATE AND COORDINATE DEVICES REQUIRING ACCESS TO BE IN GROUPED AREAS TO REDUCE THE NUMBER OF ACCESS DOORS REQUIRED. ACCESS DOORS TO BE LOCATED WITH CONSIDERATION ON AND IN ALIGNMENT WITH ARCHITECTURAL DETAILS AND OTHER CEILING/WALL MOUNTED DEVICES TO THE SATISFACTION OF THE ARCHITECT.
- WALL MOUNTED THERMOSTATS IN PUBLIC SPACES TO HAVE LOCKABLE AND VENTED PLASTIC COVER.
- TEMPERATURE/HUMIDITY STAT TO CONTROL FAN COIL UNIT. (TYPICAL).
- EXPOSED DUCTWORK IS TO BE PAINTED AND THE COLOR SELECTION BY ARCHITECT.
- THE CONTRACTOR IS TO ALLOW 1'-0" CLEARANCE ABOVE THE ELECTRICAL CABLE TRAY AND TO COORDINATE THE ROUTING OF SYSTEMS WITH THE ELECTRICAL CONTRACTOR.

## #KEYNOTES

- DUCTWORK SUSPENDED FROM STRUCTURE USING APPROVED APPLICATION. THE CONTRACTOR IS TO COORDINATE THE ROUTING OF DUCTWORK WITH TRADES BEFORE INSTALLATION IS TO PROCEED. REFER TO DETAIL FOR ADDITIONAL INFORMATION.
- MECHANICAL EQUIPMENT SUSPENDED FROM THE STRUCTURE. PROVIDE MOUNTING AND SUPPORT HARDWARE AS REQUIRED AS PER THE MANUFACTURER'S INSTALLATION INSTRUCTIONS. COORDINATE INSTALLATION HEIGHT WITH TRADES BEFORE INSTALLATION IS TO OCCUR. MAINTAIN THE REQUIRED CLEARANCE SPECIFIED IN THE MANUFACTURER'S INSTALLATION INSTRUCTIONS.
- CONNECT VAV INLET DUCT TO THE MAIN SUPPLY AIR DUCT. VAV TO COME WITH INTEGRAL ACOUSTIC ATTENUATOR. PROVIDE A STRAIGHT DUCT PER VAV MANUFACTURER'S RECOMMENDATIONS IN THE INLET SIDE. THE SIZE OF THE DUCT WORK FOR INLET AND OUTLET SHALL MATCH THE VAV BOXES AND AS PER MANUFACTURER'S RECOMMENDATIONS. REFER TO THE VAV SCHEDULE ON DRAWING.
- DUCTWORK TO RISE UP TO GOOSE NECK AT ROOF LEVEL. PROVIDE A MOTORIZED DAMPER WITHIN THE BUILDING ENVELOPE BEFORE ROOF PENETRATION.
- INSTALL NEW TRANSFER AIR DUCT COMPLETE WITH 1" FIBER-FREE CLOSED CELL ACOUSTIC INSULATION. TRANSFER DUCT SHALL BE AS HIGH AS POSSIBLE IN THE CEILING SPACE. REFER TO THE MECHANICAL DETAILS FOR MORE INFORMATION.
- DUCTWORK OPEN-ENDED IN CEILING SPACE. PROVIDE METAL MESH. DUCT MOUNTED COOLING COIL. CONNECT REFRIGERANT PIPES TO THE CONDENSING UNIT ON THE ROOF. PROVIDE CONDENSATE DRAIN LINE DOWN TO THE FUNNEL DRAIN.
- THERMOSTAT TO BE INSTALLED ACCORDING TO MANITOBA ENERGY CODE. PROVIDE CONTROL WIRING TO MECHANICAL UNIT. COORDINATE POWER SUPPLY WITH ELECTRICAL.

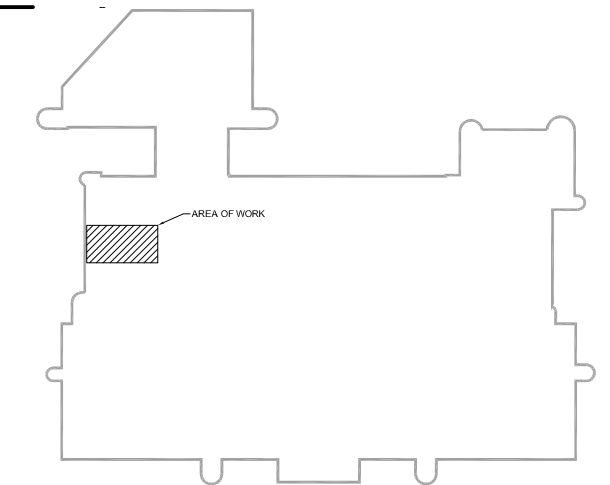


Stantec Consulting Ltd.  
Suite 500, 311 Portage Avenue  
Winnipeg MB Canada R3B 2B9  
Tel. 204.489.5900 Fax. 204.453.9012  
www.stantec.com

### Copyright Reserved

The Contractor shall verify and be responsible for all dimensions. DO NOT scale the drawing - any errors or omissions shall be reported to Stantec without delay. The Copyrights to all designs and drawings are the property of Stantec. Reproduction or use for any purpose other than that authorized by Stantec is forbidden.

### Consultants



### Legend

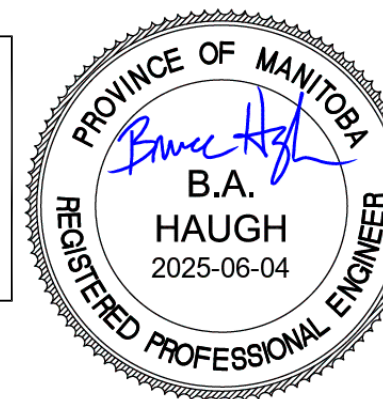
Revision	By	Appd.	YY.MM.DD

0	ISSUED FOR CONSTRUCTION	MA	BH	25.02.07

File Name:	21006-M	GS	WD	MA	25.03.28
		Dwn.	Chkd.	Dsgn.	YY.MM.DD

### Permit-Seal

**ENGINEERS  
GEOSCIENTISTS  
MANITOBA**  
Certificate of Authorization  
Stantec Consulting Ltd.  
No. 1301



### Client/Project

WINNIPEG TRANSIT MAINTENANCE FACILITY  
OFFICE REDEVELOPMENT

421 OSBORNE ST. SOUTH, WINNIPEG, MB

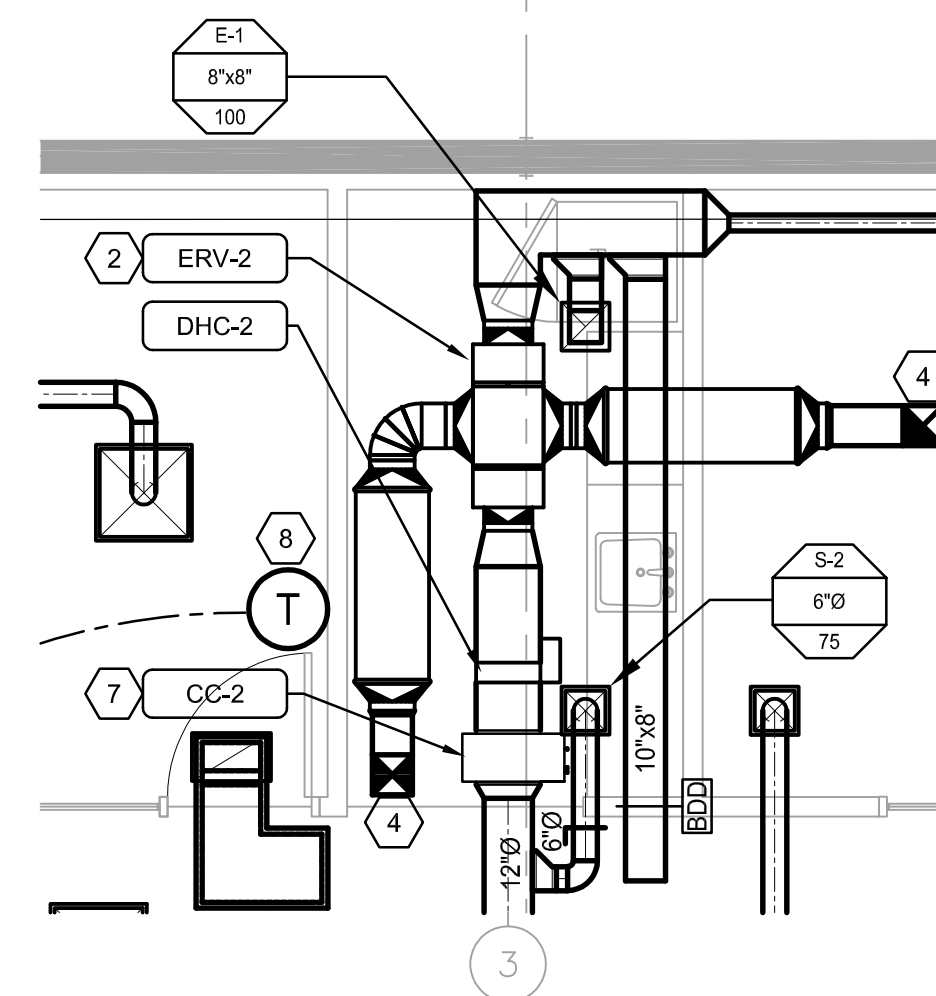
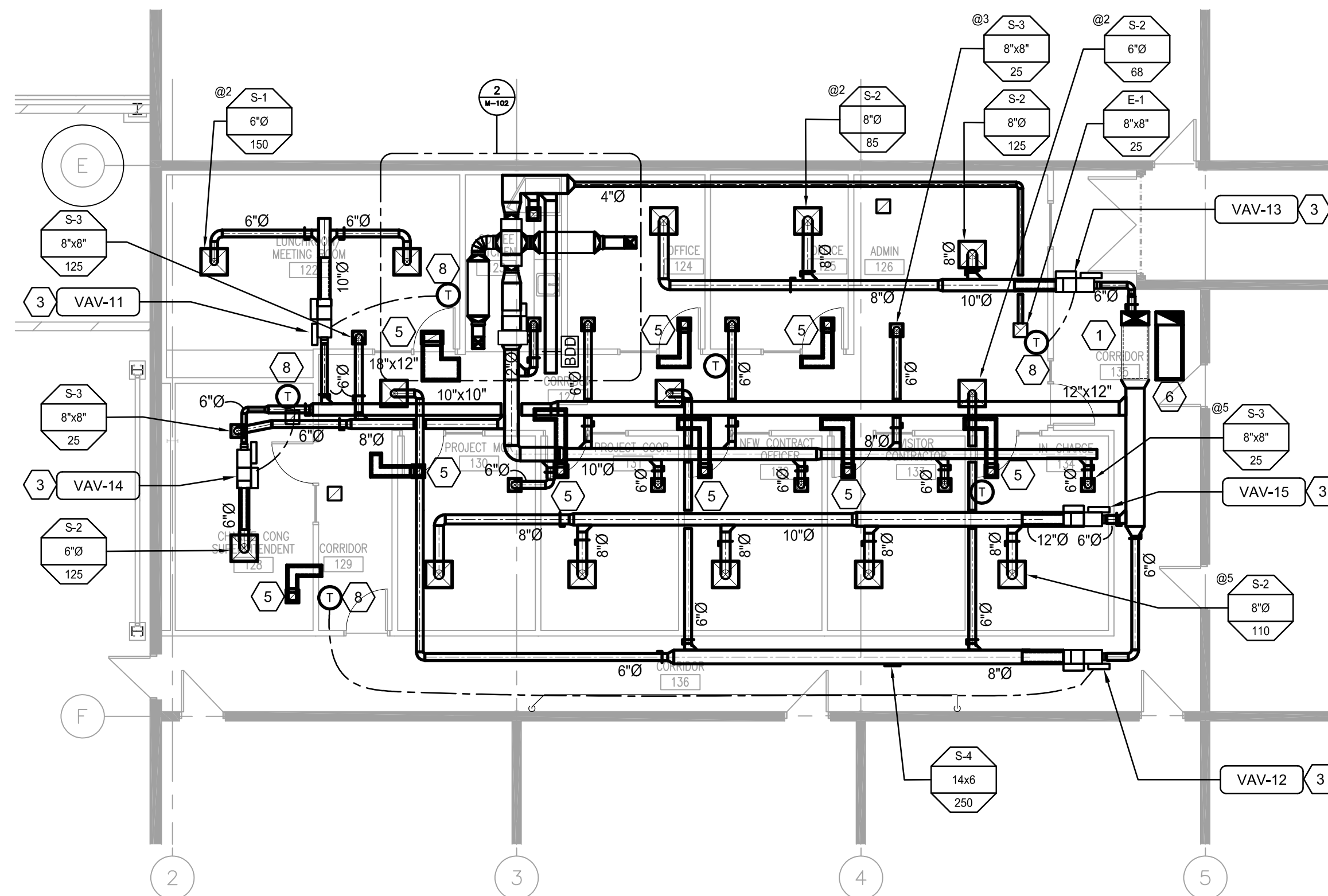
### Title

HVAC RENOVATION LAYOUT -  
PARTIAL PLAN B

Project No.	Scale
115421006	As indicated

Drawing No.	Sheet	Revision
-------------	-------	----------

M-102 7 of 16 0



**1** MAIN FLOOR PLAN - HVAC RENOVATION - AREA B  
SCALE: 1/8"=1'-0"

**2** ENLARGED COFFEE KITCHEN  
SCALE: 1/4"=1'-0"