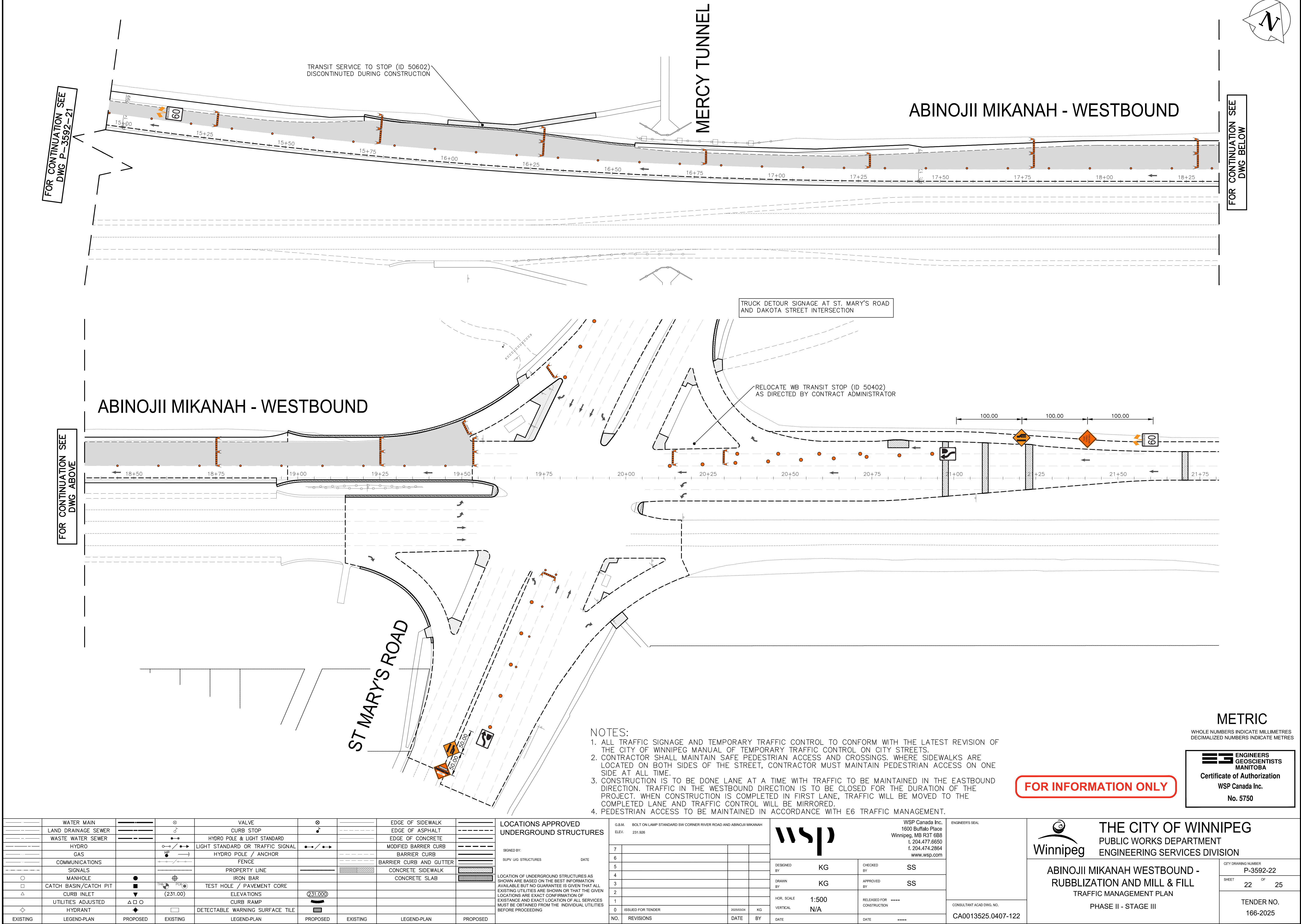


Mar 24, 2025 -- 12:18pm  
P:\2023\CA0013525\0407 - Bishop Grandin Pavement Renewal\Drawings\03\_Work\_Dwg\_CAO0013525\0407\_Abinojii Mikanah\_TMP-SIGNAGE\_2025.dwg --tab:166-2025\_Drawing\_P-3592-22



NOTES:

1. ALL TRAFFIC SIGNAGE AND TEMPORARY TRAFFIC CONTROL TO CONFORM WITH THE LATEST REVISION OF THE CITY OF WINNIPEG MANUAL OF TEMPORARY TRAFFIC CONTROL ON CITY STREETS.
2. CONTRACTOR SHALL MAINTAIN SAFE PEDESTRIAN ACCESS AND CROSSINGS. WHERE SIDEWALKS ARE LOCATED ON BOTH SIDES OF THE STREET, CONTRACTOR MUST MAINTAIN PEDESTRIAN ACCESS ON ONE SIDE AT ALL TIME.
3. CONSTRUCTION IS TO BE DONE LANE AT A TIME WITH TRAFFIC TO BE MAINTAINED IN THE EASTBOUND DIRECTION. TRAFFIC IN THE WESTBOUND DIRECTION IS TO BE CLOSED FOR THE DURATION OF THE PROJECT. WHEN CONSTRUCTION IS COMPLETED IN FIRST LANE, TRAFFIC WILL BE MOVED TO THE COMPLETED LANE AND TRAFFIC CONTROL WILL BE MIRRORED.
4. PEDESTRIAN ACCESS TO BE MAINTAINED IN ACCORDANCE WITH E6 TRAFFIC MANAGEMENT.

---	WATER MAIN	---	⊗	VALVE	⊗	---	EDGE OF SIDEWALK	---
---	LAND DRAINAGE SEWER	---	♂	CURB STOP	♂	---	EDGE OF ASPHALT	---
---	WASTE WATER SEWER	---	---●---	HYDRO POLE & LIGHT STANDARD	---●---	---	EDGE OF CONCRETE	---
---	HYDRO	---	HP	LIGHT STANDARD OR TRAFFIC SIGNAL	---●---	---	MODIFIED BARRIER CURB	---
---	GAS	---	HP	HYDRO POLE / ANCHOR	---●---	---	BARRIER CURB	---
---	COMMUNICATIONS	---	---	FENCE	---	---	BARRIER CURB AND GUTTER	---
---	SIGNALS	---	---	PROPERTY LINE	---	---	CONCRETE SIDEWALK	---
○	MANHOLE	●	⊕	IRON BAR	---	---	CONCRETE SLAB	---
□	CATCH BASIN/CATCH PIT	■	⊕	TEST HOLE / PAVEMENT CORE	---	---		
△	CURB INLET	▼	⊕	ELEVATIONS	(231.00)	---		
◇	UTILITIES ADJUSTED	△ □ ○	---	CURB RAMP	---	---		
◇	HYDRANT	◆	---	DETECTABLE WARNING SURFACE TILE	---	---		
EXISTING	LEGEND-PLAN	PROPOSED	EXISTING	LEGEND-PLAN	PROPOSED	EXISTING	LEGEND-PLAN	PROPOSED

LOCATIONS APPROVED UNDERGROUND STRUCTURES

SIGNED BY:  
SUPV UG STRUCTURES

DATE

LOCATION OF UNDERGROUND STRUCTURES AS SHOWN ARE BASED ON THE BEST INFORMATION AVAILABLE BUT NO GUARANTEE IS GIVEN THAT ALL EXISTING UTILITIES ARE SHOWN OR THAT THE GIVEN LOCATIONS ARE EXACT CONFIRMATION OF EXISTANCE AND EXACT LOCATION OF ALL SERVICES MUST BE OBTAINED FROM THE INDIVIDUAL UTILITIES BEFORE PROCEEDING

G.B.M.	BOLT ON LAMP STANDARD SW CORNER RIVER ROAD AND ABINOJII MIKANAH			
ELEV.	231.926			
7				
6				
5				
4				
3				
2				
1				
0	ISSUED FOR TENDER	2025/03/24	KG	
NO.	REVISIONS	DATE	BY	

		WSP Canada Inc. 1600 Buffalo Place Winnipeg, MB R3T 6B8 t. 204.477.6650 f. 204.474.2864 www.wsp.com	
DESIGNED BY	KG	CHECKED BY	SS
DRAWN BY	KG	APPROVED BY	SS
HOR. SCALE	1:500	RELEASED FOR CONSTRUCTION	----
VERTICAL	N/A	DATE	----

ENGINEER'S SEAL	
CONSULTANT ACAD DWG. NO.	CA0013525.0407-122

FOR INFORMATION ONLY

		THE CITY OF WINNIPEG PUBLIC WORKS DEPARTMENT ENGINEERING SERVICES DIVISION	
ABINOJII MIKANAH WESTBOUND - RUBBLIZATION AND MILL & FILL TRAFFIC MANAGEMENT PLAN PHASE II - STAGE III		CITY DRAWING NUMBER P-3592-22 SHEET 22 OF 25	TENDER NO. 166-2025

METRIC

WHOLE NUMBERS INDICATE MILLIMETRES  
DECIMALIZED NUMBERS INDICATE METRES

Certificate of Authorization  
WSP Canada Inc.  
No. 5750