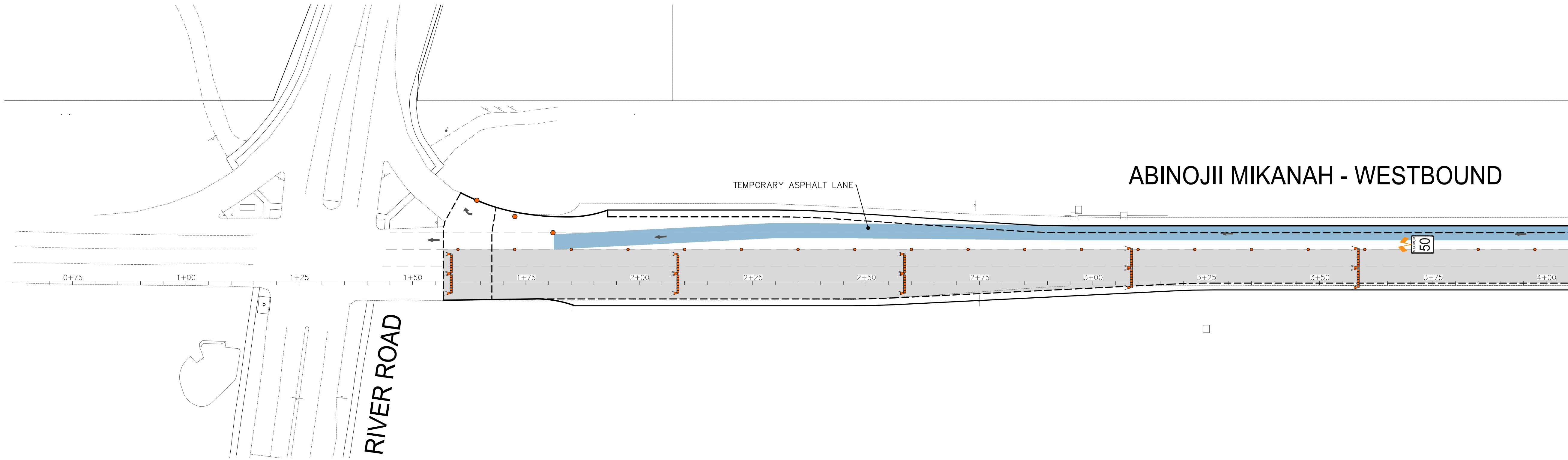
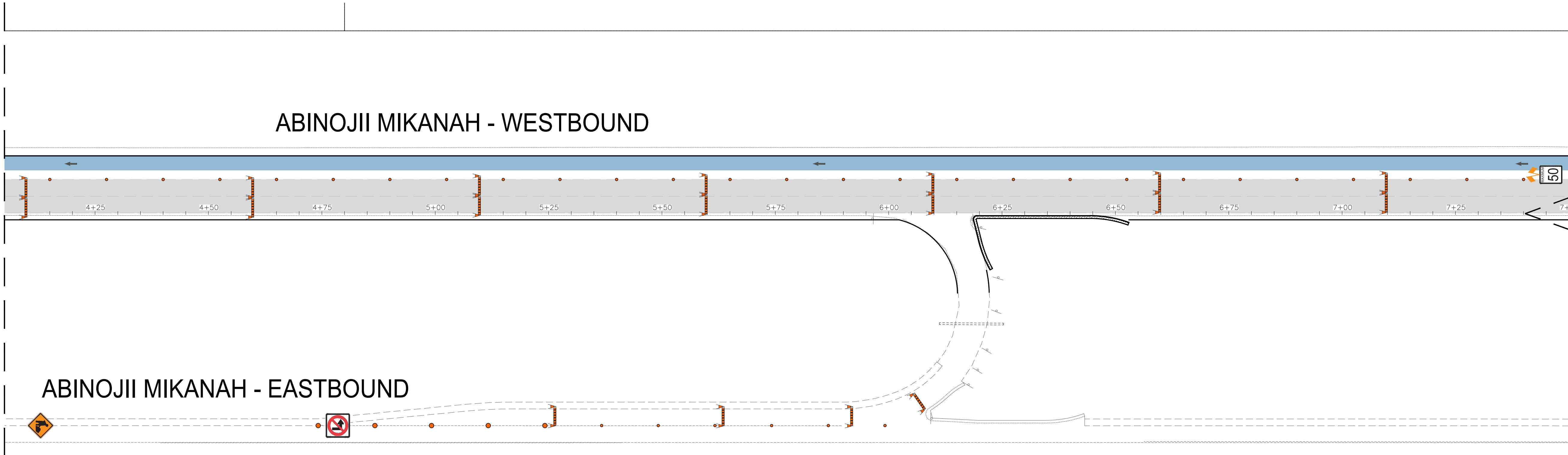
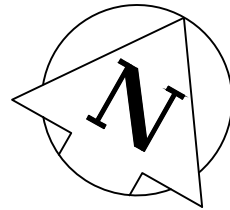


Mar 24, 2025 — 12:15pm
P:\2023\CA0013525\0407 - Bishop Grandin Pavement Renewal\Drawings\03_Work_Dwg_CAO0013525\0407_Abinojii Mikanah_TMP-SIGNAGE_2025.dwg —tab:166-2025_Drawing_P-3592-19



FOR CONTINUATION SEE
DWG BELOW



FOR CONTINUATION SEE
DWG ABOVE

FOR CONTINUATION SEE
DWG P-3592-20

NOTES:

1. ALL TRAFFIC SIGNAGE AND TEMPORARY TRAFFIC CONTROL TO CONFORM WITH THE LATEST REVISION OF THE CITY OF WINNIPEG MANUAL OF TEMPORARY TRAFFIC CONTROL ON CITY STREETS.
2. CONTRACTOR SHALL MAINTAIN SAFE PEDESTRIAN ACCESS AND CROSSINGS. WHERE SIDEWALKS ARE LOCATED ON BOTH SIDES OF THE STREET, CONTRACTOR MUST MAINTAIN PEDESTRIAN ACCESS ON ONE SIDE AT ALL TIME.
3. CONSTRUCTION IS TO BE DONE LANE AT A TIME WITH TRAFFIC TO BE MAINTAINED IN THE EASTBOUND DIRECTION. TRAFFIC IN THE WESTBOUND DIRECTION IS TO BE CLOSED FOR THE DURATION OF THE PROJECT. WHEN CONSTRUCTION IS COMPLETED IN FIRST LANE, TRAFFIC WILL BE MOVED TO THE COMPLETED LANE AND TRAFFIC CONTROL WILL BE MIRRORED.
4. PEDESTRIAN ACCESS TO BE MAINTAINED IN ACCORDANCE WITH E6 TRAFFIC MANAGEMENT.

METRIC

WHOLE NUMBERS INDICATE MILLIMETRES
DECIMALIZED NUMBERS INDICATE METRES

FOR INFORMATION ONLY

**ENGINEERS
GEOSCIENTISTS
MANITOBA**
Certificate of Authorization
WSP Canada Inc.
No. 5750

---	WATER MAIN	---	⊗	VALVE	⊗	---	EDGE OF SIDEWALK	---
---	LAND DRAINAGE SEWER	---	♂	CURB STOP	♂	---	EDGE OF ASPHALT	---
---	WASTE WATER SEWER	---	---●---	HYDRO POLE & LIGHT STANDARD	---●---	---	EDGE OF CONCRETE	---
---	HYDRO	---	---HP---	LIGHT STANDARD OR TRAFFIC SIGNAL	---/---	---	MODIFIED BARRIER CURB	---
---	GAS	---	---HP---	HYDRO POLE / ANCHOR	---/---	---	BARRIER CURB	---
---	COMMUNICATIONS	---	---HP---	FENCE	---	---	BARRIER CURB AND GUTTER	---
---	SIGNALS	---	---	PROPERTY LINE	---	---	CONCRETE SIDEWALK	---
○	MANHOLE	●	⊕	IRON BAR	---	---	CONCRETE SLAB	---
□	CATCH BASIN/CATCH PIT	■	⊕	TEST HOLE / PAVEMENT CORE	⊕	---		
△	CURB INLET	▼	(231.00)	ELEVATIONS	(231.000)	---		
◇	UTILITIES ADJUSTED	△ □ ○		CURB RAMP	---	---		
◇	HYDRANT	◆	---	DETECTABLE WARNING SURFACE TILE	---	---		
EXISTING	LEGEND-PLAN	PROPOSED	EXISTING	LEGEND-PLAN	PROPOSED	EXISTING	LEGEND-PLAN	PROPOSED

LOCATIONS APPROVED
UNDERGROUND STRUCTURES

SIGNED BY:
SUPV U/G STRUCTURES

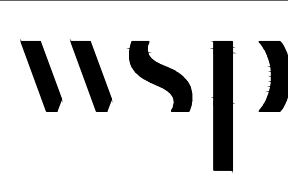
DATE

LOCATION OF UNDERGROUND STRUCTURES AS SHOWN ARE BASED ON THE BEST INFORMATION AVAILABLE BUT NO GUARANTEE IS GIVEN THAT ALL EXISTING UTILITIES ARE SHOWN OR THAT THE GIVEN LOCATIONS ARE EXACT CONFIRMATION OF EXISTANCE AND EXACT LOCATION OF ALL SERVICES MUST BE OBTAINED FROM THE INDIVIDUAL UTILITIES BEFORE PROCEEDING

G.B.M.
ELEV. 231.926

BOLT ON LAMP STANDARD SW CORNER RIVER ROAD AND ABINOJII MIKANAH

7			
6			
5			
4			
3			
2			
1			
0	ISSUED FOR TENDER	2025/03/24	KG
NO.	REVISIONS	DATE	BY



DESIGNED BY	KG	CHECKED BY	SS
DRAWN BY	KG	APPROVED BY	SS
HOR. SCALE	1:500	RELEASED FOR CONSTRUCTION	---
VERTICAL	N/A	DATE	---

WSP Canada Inc.
1600 Buffalo Place
Winnipeg, MB R3T 6B8
t. 204.477.6650
f. 204.474.2864
www.wsp.com

ENGINEER'S SEAL

CONSULTANT ACAD DWG. NO.
CA0013525.0407-119



THE CITY OF WINNIPEG
PUBLIC WORKS DEPARTMENT
ENGINEERING SERVICES DIVISION

ABINOJII MIKANAH WESTBOUND -
RUBBLIZATION AND MILL & FILL
TRAFFIC MANAGEMENT PLAN

PHASE II - STAGE II

CITY DRAWING NUMBER
P-3592-19
SHEET 19 OF 25

TENDER NO.
166-2025