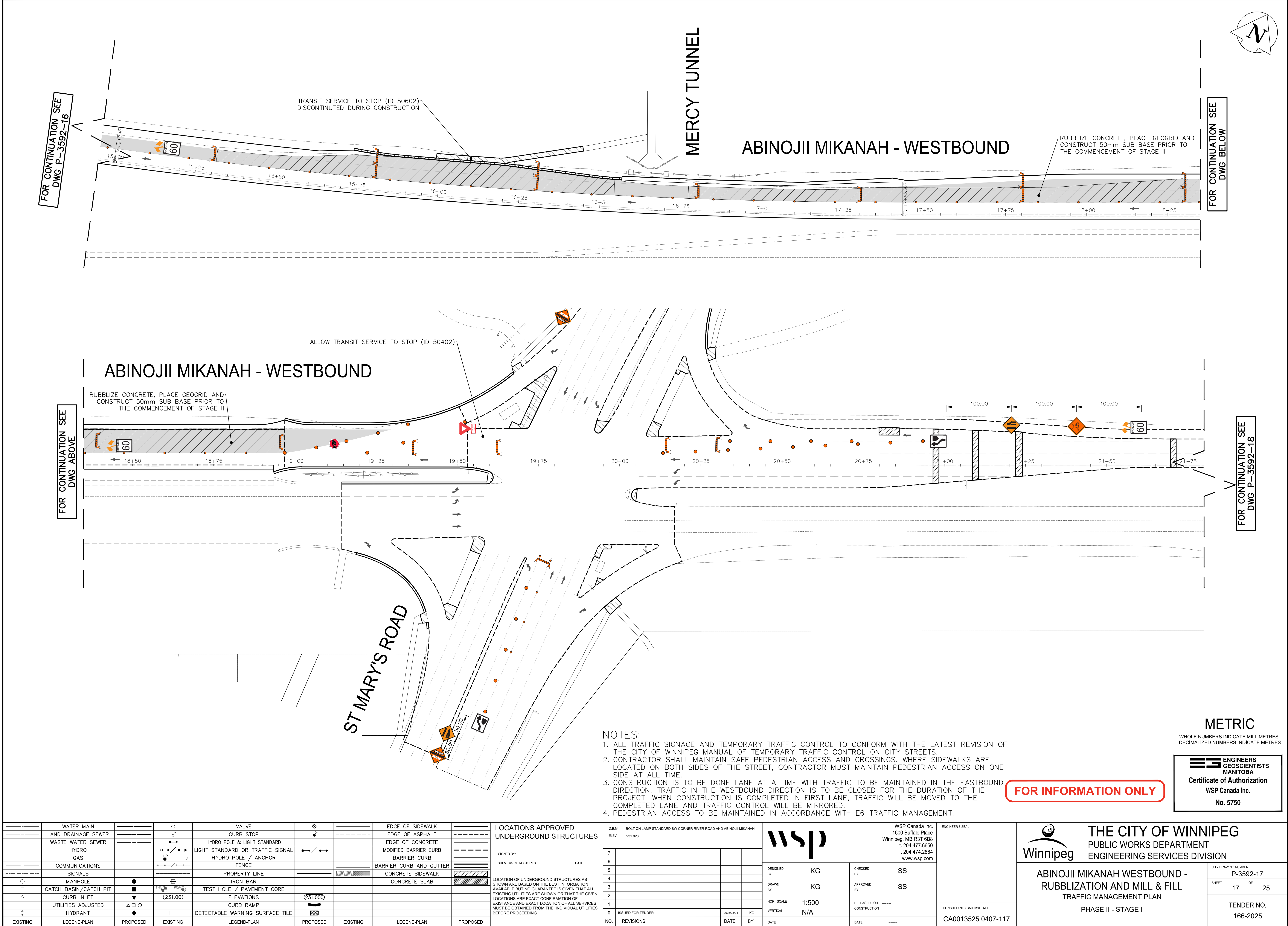


Mar 24, 2025 — 12:14pm
P:\2023\CA0013525\0407 - Bishop Grandin Pavement Renewal\Drawings\03_Work_Dwg_CAO0013525\0407_Abinojii Mikanah_TMP-SIGNAGE_2025.dwg --tab:166--2025_Drawing_P-3592-17



NOTES:

1. ALL TRAFFIC SIGNAGE AND TEMPORARY TRAFFIC CONTROL TO CONFORM WITH THE LATEST REVISION OF THE CITY OF WINNIPEG MANUAL OF TEMPORARY TRAFFIC CONTROL ON CITY STREETS.
2. CONTRACTOR SHALL MAINTAIN SAFE PEDESTRIAN ACCESS AND CROSSINGS. WHERE SIDEWALKS ARE LOCATED ON BOTH SIDES OF THE STREET, CONTRACTOR MUST MAINTAIN PEDESTRIAN ACCESS ON ONE SIDE AT ALL TIME.
3. CONSTRUCTION IS TO BE DONE LANE AT A TIME WITH TRAFFIC TO BE MAINTAINED IN THE EASTBOUND DIRECTION. TRAFFIC IN THE WESTBOUND DIRECTION IS TO BE CLOSED FOR THE DURATION OF THE PROJECT. WHEN CONSTRUCTION IS COMPLETED IN FIRST LANE, TRAFFIC WILL BE MOVED TO THE COMPLETED LANE AND TRAFFIC CONTROL WILL BE MIRRORRED.
4. PEDESTRIAN ACCESS TO BE MAINTAINED IN ACCORDANCE WITH E6 TRAFFIC MANAGEMENT.

FOR INFORMATION ONLY

METRIC

WHOLE NUMBERS INDICATE MILLIMETRES
DECIMALIZED NUMBERS INDICATE METRES

ENGINEERS
GEOSCIENTISTS
MANITOBA
Certificate of Authorization
WSP Canada Inc.
No. 5750

---	WATER MAIN	---	⊗	VALVE	⊗	---	EDGE OF SIDEWALK	---
---	LAND DRAINAGE SEWER	---	♂	CURB STOP	♂	---	EDGE OF ASPHALT	---
---	WASTE WATER SEWER	---	---●---	HYDRO POLE & LIGHT STANDARD	---●---	---	EDGE OF CONCRETE	---
---	HYDRO GAS	---	HP	LIGHT STANDARD OR TRAFFIC SIGNAL	HP	---	MODIFIED BARRIER CURB	---
---	COMMUNICATIONS	---	HP	HYDRO POLE / ANCHOR	HP	---	BARRIER CURB	---
---	SIGNALS	---	HP	FENCE	HP	---	BARRIER CURB AND GUTTER	---
---	MANHOLE	---	⊕	PROPERTY LINE	⊕	---	CONCRETE SIDEWALK	---
---	CATCH BASIN/CATCH PIT	---	⊕	TEST HOLE / PAVEMENT CORE	⊕	---	CONCRETE SLAB	---
---	CURB INLET	---	⬮	ELEVATIONS	(231.00)	---		
---	UTILITIES ADJUSTED	---	△ □ ○	CURB RAMP		---		
---	HYDRANT	---	◆	DETECTABLE WARNING SURFACE TILE		---		
---	EXISTING	---	---	LEGEND-PLAN	---	---	LEGEND-PLAN	---
---	PROPOSED	---	---	PROPOSED	---	---	PROPOSED	---
---	EXISTING	---	---	LEGEND-PLAN	---	---	LEGEND-PLAN	---
---	PROPOSED	---	---	PROPOSED	---	---	PROPOSED	---

LOCATIONS APPROVED UNDERGROUND STRUCTURES	
SIGNED BY:	DATE
SUPV UG STRUCTURES	
LOCATION OF UNDERGROUND STRUCTURES AS SHOWN ARE BASED ON THE BEST INFORMATION AVAILABLE BUT NO GUARANTEE IS GIVEN THAT ALL EXISTING UTILITIES ARE SHOWN OR THAT THE GIVEN LOCATIONS ARE EXACT CONFIRMATION OF EXISTANCE AND EXACT LOCATION OF ALL SERVICES MUST BE OBTAINED FROM THE INDIVIDUAL UTILITIES BEFORE PROCEEDING	

G.B.M. ELEV.	BOLT ON LAMP STANDARD SW CORNER RIVER ROAD AND ABINOJII MIKANAH	231.926
7		
6		
5		
4		
3		
2		
1		
0	ISSUED FOR TENDER	2025/03/24 KG
NO.	REVISIONS	DATE BY

wsp		WSP Canada Inc. 1600 Buffalo Place Winnipeg, MB R3T 6B8 t. 204.477.6650 f. 204.474.2864 www.wsp.com	
DESIGNED BY	KG	CHECKED BY	SS
DRAWN BY	KG	APPROVED BY	SS
HOR. SCALE	1:500	RELEASED FOR CONSTRUCTION	----
VERTICAL	N/A	DATE	----

ENGINEER'S SEAL
CONSULTANT ACAD DWG. NO.
CA0013525.0407-117

THE CITY OF WINNIPEG
PUBLIC WORKS DEPARTMENT
ENGINEERING SERVICES DIVISION

ABINOJII MIKANAH WESTBOUND - RUBBLIZATION AND MILL & FILL
TRAFFIC MANAGEMENT PLAN
PHASE II - STAGE I

CITY DRAWING NUMBER: P-3592-17
SHEET: 17 OF 25
TENDER NO.: 166-2025