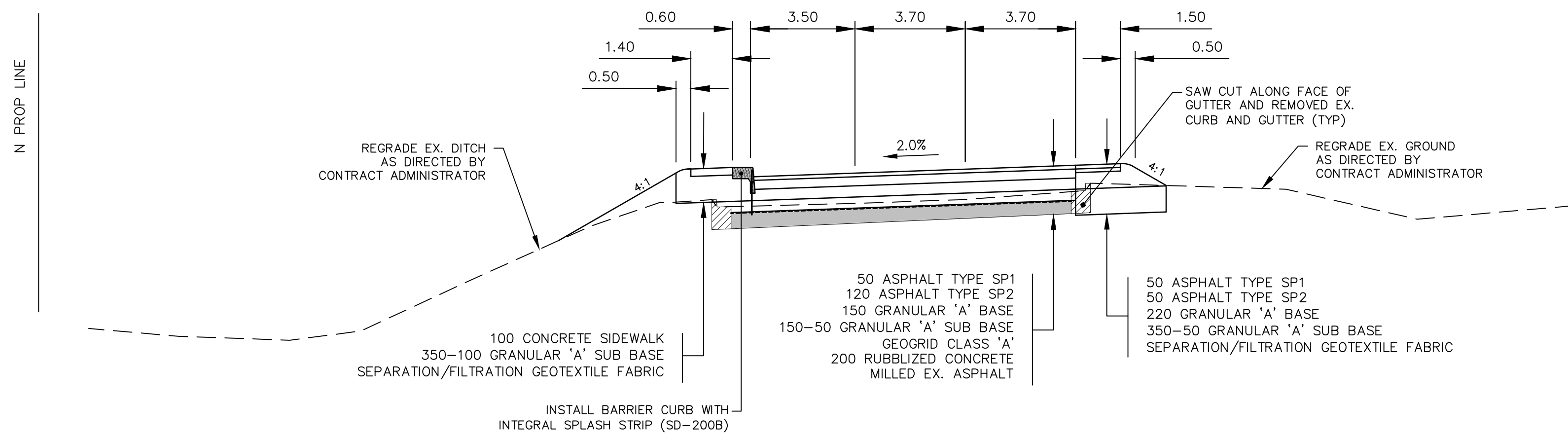
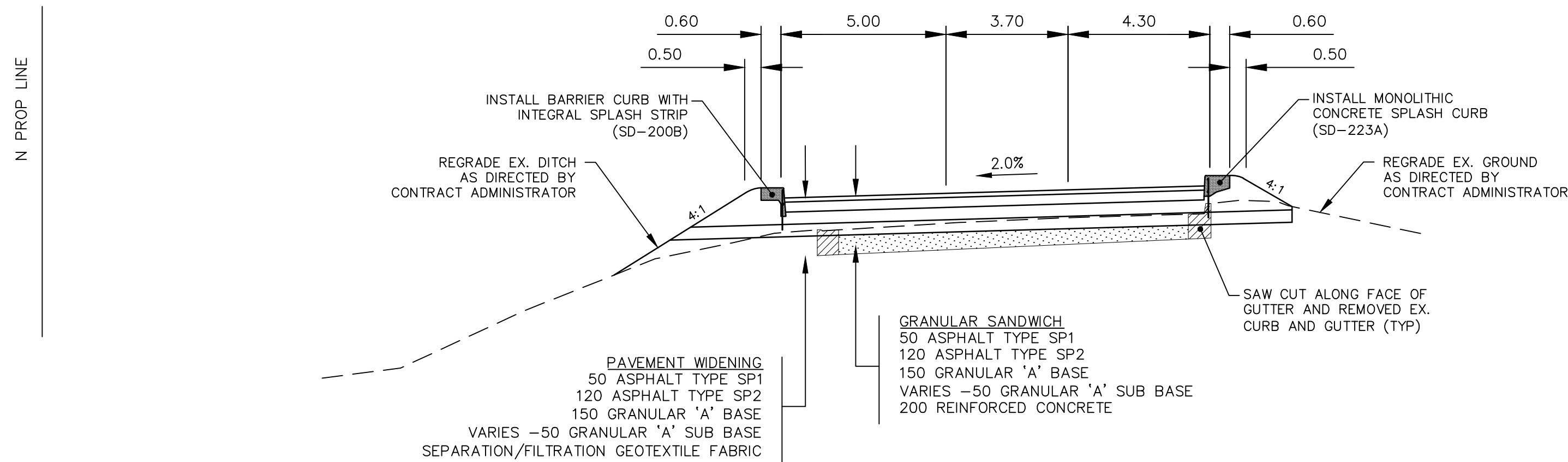


Mar 24, 2025 — 12:49pm  
P:\2023\CA0013525\0407 - Bishop, grandin, pavement renewal\Drawings\03\_Work\_Dwg\_CA0013525\0407\_Cross Sections\_2025.dwg — tab:P-3592-07



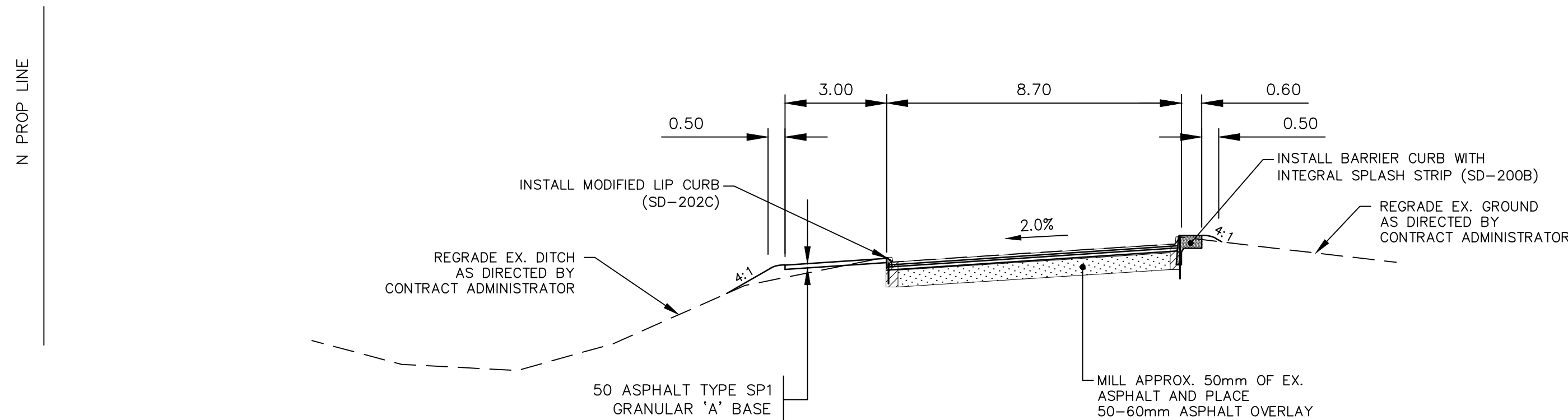
CROSS-SECTION 'D' - STATION 16+05

HORIZONTAL SCALE: 1:125  
VERTICAL SCALE: 1:50



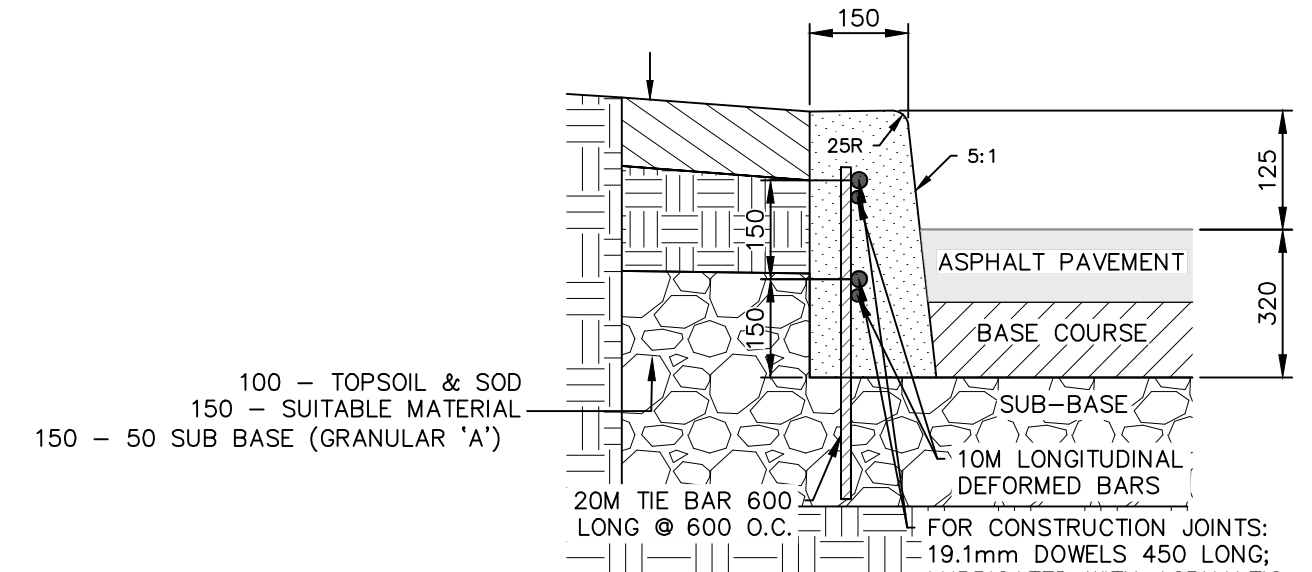
CROSS-SECTION 'E' - STATION 19+05

HORIZONTAL SCALE: 1:125  
VERTICAL SCALE: 1:50



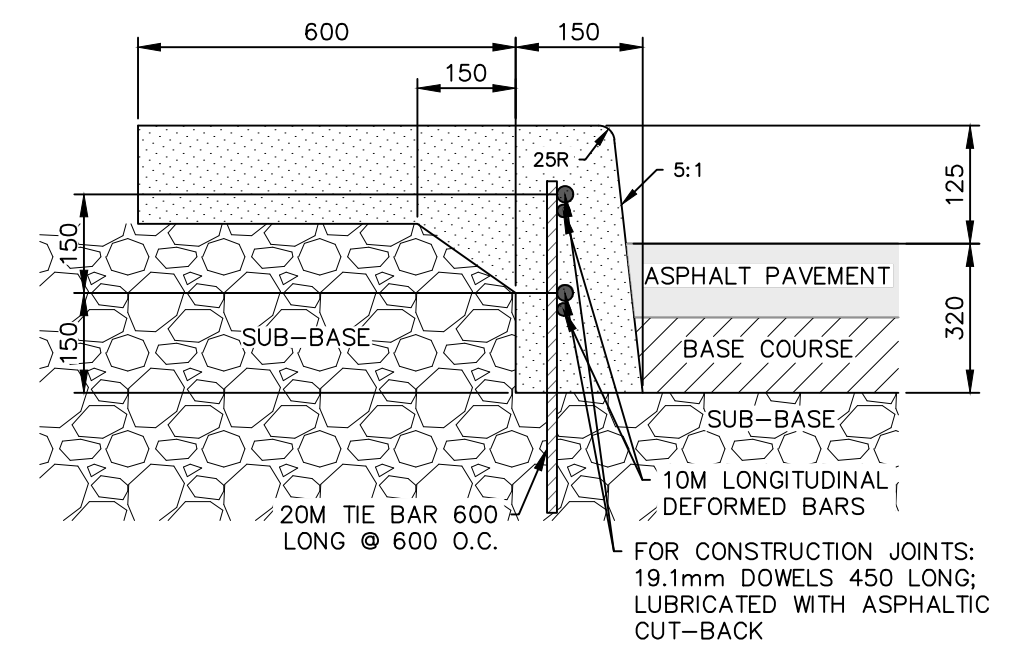
CROSS-SECTION 'F' - STATION 22+00

HORIZONTAL SCALE: 1:125  
VERTICAL SCALE: 1:50



BARRIER CURB FOR ASPHALT PAVEMENT (SD-200A)

NTS



BARRIER CURB WITH INTEGRAL SPLASH STRIP FOR ASPHALT PAVEMENT (SD-200B)

NTS

METRIC

WHOLE NUMBERS INDICATE MILLIMETRES  
DECIMALIZED NUMBERS INDICATE METRES

**ENGINEERS**  
GEOSCIENTISTS  
MANITOBA  
Certificate of Authorization  
WSP Canada Inc.  
No. 5750

FOR TENDER PURPOSES ONLY

NOT FOR CONSTRUCTION

---	WATER MAIN	---	⊗	---	VALVE	---	⊗	---	EDGE OF SIDEWALK	---
---	LAND DRAINAGE SEWER	---	⊕	---	CURB STOP	---	⊕	---	EDGE OF ASPHALT	---
---	WASTE WATER SEWER	---	---	---	HYDRO POLE & LIGHT STANDARD	---	---	---	EDGE OF CONCRETE	---
---	HYDRO	---	⊕	---	LIGHT STANDARD OR TRAFFIC SIGNAL	---	⊕	---	MODIFIED BARRIER CURB	---
---	GAS	---	⊕	---	HYDRO POLE / ANCHOR	---	⊕	---	BARRIER CURB	---
---	COMMUNICATIONS	---	⊕	---	FENCE	---	⊕	---	CONCRETE SIDEWALK	---
---	SIGNALS	---	⊕	---	PROPERTY LINE	---	⊕	---	CONCRETE SLAB	---
○	MANHOLE	●	⊕	---	TEST HOLE / PAVEMENT CORE	---	⊕	---	ASPHALT SHOULDER	---
□	CATCH BASIN/CATCH PIT	■	⊕	---	ELEVATIONS	(231.00)	⊕	---	RUBBLIZATION	---
△	CURB INLET	▽	⊕	---	CURB RAMP	---	⊕	---	ASPHALT MILL AND FILL	---
◇	UTILITIES ADJUSTED	△ □ ○	⊕	---	DETECTABLE WARNING SURFACE TILE	---	⊕	---	GRANULAR SANDWICH	---
◇	HYDRANT	◆	⊕	---		---	⊕	---		---
EXISTING	LEGEND-PLAN	PROPOSED	EXISTING	LEGEND-PLAN	PROPOSED	EXISTING	LEGEND-PLAN	PROPOSED		

LOCATIONS APPROVED UNDERGROUND STRUCTURES	
SIGNED BY:	DATE:
SUP UG STRUCTURES	
LOCATION OF UNDERGROUND STRUCTURES AS SHOWN ARE BASED ON THE BEST INFORMATION AVAILABLE BUT NO GUARANTEE IS GIVEN THAT ALL EXISTING UTILITIES ARE SHOWN OR THAT THE GIVEN LOCATIONS ARE EXACT LOCATION OF ALL SERVICES MUST BE OBTAINED FROM THE INDIVIDUAL UTILITIES BEFORE PROCEEDING	

G.B.M.	BOLT ON LAMP STANDARD SW CORNER RIVER ROAD AND ABINOJII MIKANAH
ELEV.	231.926
7	
6	
5	
4	
3	
2	
1	
0	ISSUED FOR TENDER
NO.	REVISIONS
	DATE
	BY

<b>wsp</b>	
DESIGNED BY	KG
DRAWN BY	KG
HOR. SCALE	1:500
VERTICAL	N/A
RELEASED FOR CONSTRUCTION	---
DATE	---

ENGINEER'S SEAL
WSP Canada Inc. 1600 Buffalo Place Winnipeg, MB R3T 6B8 t. 204.477.6650 f. 204.474.2864 www.wsp.com
CONSULTANT ACAD DWG. NO.
CA0013525.0407-107

<b>THE CITY OF WINNIPEG</b> PUBLIC WORKS DEPARTMENT ENGINEERING SERVICES DIVISION	
ABINOJII MIKANAH WESTBOUND - RUBBLIZATION AND MILL & FILL CROSS SECTIONS & DETAILS	CITY DRAWING NUMBER P-3592-07 SHEET 07 OF 25 TENDER NO. 166-2025