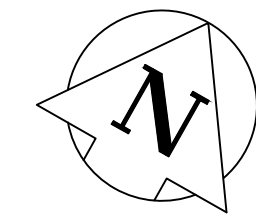


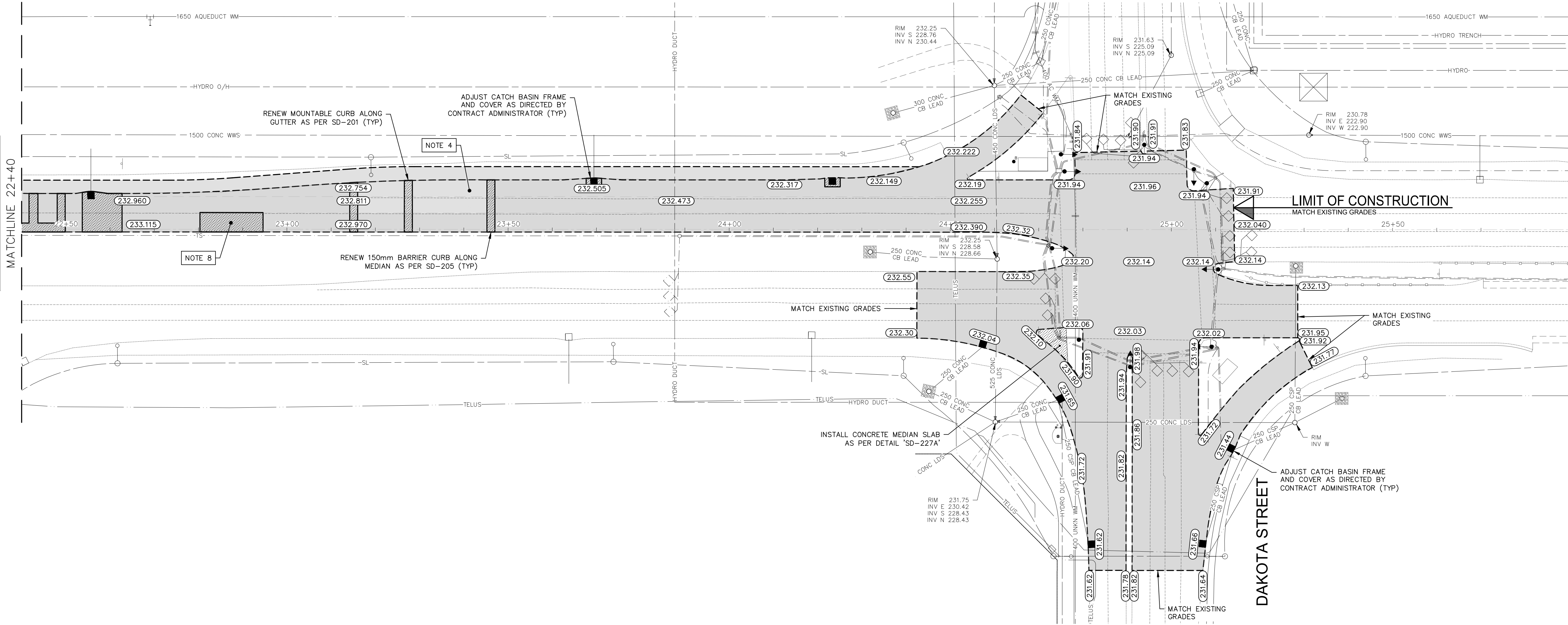
Mar 24, 2025 — 1:31pm  
P:\2023\CA0013525\0407 - Bishop, grandin, pavement renewal\Drawings\03\_Work\_Dwg\CA0013525\0407\_Abinojii Mikanah\_Plan\_2025.dwg — Tab:P-3592-04

WESTBOUND ABINOJII MIKANAH



FOR CONTINUATION SEE  
DWG P-3592-03

MATCHLINE 22+40



NOTES:

1. ALL WORK AND MATERIALS TO BE IN ACCORDANCE WITH THE LATEST REVISION OF THE CITY OF WINNIPEG STANDARD CONSTRUCTION SPECIFICATIONS.
2. CONTRACTOR TO CONFIRM THE LOCATION OF ALL UTILITIES/SERVICES IN THE FIELD PRIOR TO CONSTRUCTION.
3. ALL ROADWAY DIMENSIONS SHOWN ARE TO BACK OF CURB/EDGE OF PAVEMENT.
4. EXISTING ASPHALT PLANED AS SHOWN OR AS DIRECTED BY CONTRACT ADMINISTRATOR.
5. EXISTING CONCRETE RUBBLIZED AS SHOWN OR AS DIRECTED BY CONTRACT ADMINISTRATOR.
6. SAWCUT EXISTING CURB AND GUTTER ALONG FACE OF GUTTER AND REMOVE.
7. CLASS A GEOGRID TO BE INSTALLED OVERLAYING RUBBLIZED CONCRETE AS DIRECTED BY CONTRACT ADMINISTRATOR.
8. 200mm PARTIAL CONCRETE SLAB PATCHES SHOWN ARE ONLY A REPRESENTATIVE APPROXIMATION OF THE TENDERED QUANTITIES.
9. STOCKPILE REQUIRED EXCAVATED MATERIAL ALONG MEDIAN SHOULDER TO REGRADE BOULEVARD WHERE PROPOSED PAVEMENT DRAINS TO THE NORTH.
10. ALL BOULEVARDS HYDRO SEEDED UNLESS OTHERWISE DIRECTED BY CONTRACT ADMINISTRATOR.
11. ADJUST ALL WATER VALVES, HYDRANTS, MANHOLES, AND CATCH BASINS IN WORK AREA TO GRADE.

---	WATER MAIN	---	⊗	VALVE	⊗	---	EDGE OF SIDEWALK	---
---	LAND DRAINAGE SEWER	---	♂	CURB STOP	♂	---	EDGE OF ASPHALT	---
---	WASTE WATER SEWER	---	---●---	HYDRO POLE & LIGHT STANDARD	---	---	EDGE OF CONCRETE	---
---	HYDRO	---	HP	LIGHT STANDARD OR TRAFFIC SIGNAL	---	---	MODIFIED BARRIER CURB	---
---	GAS	---	HP	HYDRO POLE / ANCHOR	---	---	BARRIER CURB	---
---	COMMUNICATIONS	---	---	FENCE	---	---	CONCRETE SIDEWALK	---
---	SIGNALS	---	---	PROPERTY LINE	---	---	CONCRETE SLAB	---
○	MANHOLE	●	⊕	TEST HOLE / PAVEMENT CORE	---	---	PAVEMENT REMOVAL	---
□	CATCH BASIN/CATCH PIT	■	⊕	ELEVATIONS	(231.00)	---	ASPHALT SHOULDER	---
△	CURB INLET	▼	---	CURB RAMP	---	---	RUBBLIZATION	---
◇	UTILITIES ADJUSTED	△ □ ○	---	DETECTABLE WARNING SURFACE TILE	---	---	ASPHALT MILL AND FILL	---
◇	HYDRANT	◆	---	LEGEND-PLAN	PROPOSED	EXISTING	GRANULAR SANDWICH	---
EXISTING	LEGEND-PLAN	PROPOSED	EXISTING	LEGEND-PLAN	PROPOSED	EXISTING	LEGEND-PLAN	PROPOSED

LOCATIONS APPROVED  
UNDERGROUND STRUCTURES

SIGNED BY: \_\_\_\_\_ DATE: \_\_\_\_\_  
SUPV UG STRUCTURES

LOCATION OF UNDERGROUND STRUCTURES AS SHOWN ARE BASED ON THE BEST INFORMATION AVAILABLE BUT NO GUARANTEE IS GIVEN THAT ALL EXISTING UTILITIES ARE SHOWN OR THAT THE GIVEN LOCATIONS ARE EXACT CONFIRMATION OF EXISTENCE AND EXACT LOCATION OF ALL SERVICES MUST BE OBTAINED FROM THE INDIVIDUAL UTILITIES BEFORE PROCEEDING

G.B.M.  
ELEV. 231.926  
BOLT ON LAMP STANDARD SW CORNER RIVER ROAD AND ABINOJII MIKANAH

7			
6			
5			
4			
3			
2			
1			
0	ISSUED FOR TENDER	2025/03/24	KG
NO.	REVISIONS	DATE	BY



DESIGNED BY: KG  
DRAWN BY: KG  
HORIZ. SCALE: 1:500  
VERTICAL: N/A

WSP Canada Inc.  
1600 Buffalo Place  
Winnipeg, MB R3T 6B8  
t. 204.477.6650  
f. 204.474.2864  
www.wsp.com

CHECKED BY: SS  
APPROVED BY: SS  
RELEASED FOR CONSTRUCTION: \_\_\_\_\_  
DATE: \_\_\_\_\_

ENGINEER'S SEAL

CONSULTANT ACAD DWG. NO.  
CA0013525.0407-104

FOR TENDER PURPOSES ONLY  
NOT FOR CONSTRUCTION

METRIC

WHOLE NUMBERS INDICATE MILLIMETRES  
DECIMALIZED NUMBERS INDICATE METRES

**ENGINEERS  
GEOSCIENTISTS  
MANITOBA**  
Certificate of Authorization  
WSP Canada Inc.  
No. 5750



**THE CITY OF WINNIPEG**  
PUBLIC WORKS DEPARTMENT  
ENGINEERING SERVICES DIVISION

**ABINOJII MIKANAH WESTBOUND -  
RUBBLIZATION AND MILL & FILL**  
PLAN DRAWING  
PAVEMENT RENEWAL  
STA. 22+40 TO STA. 25+14.16

CITY DRAWING NUMBER  
P-3592-04  
SHEET 04 OF 25  
TENDER NO.  
166-2025