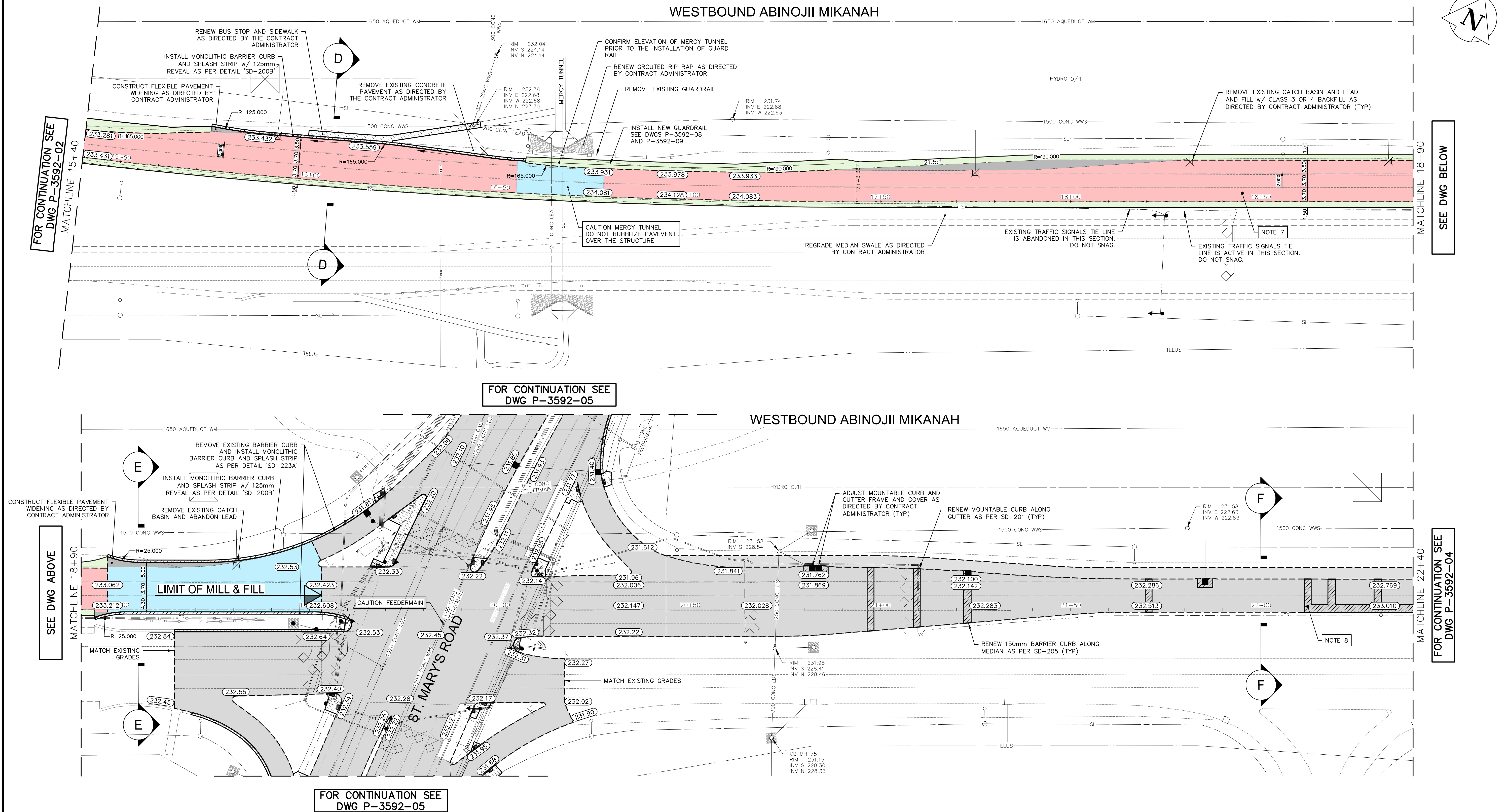


Mar 24, 2025 - 1:30pm
P:\2023\CA0013525\0407 - Bishop grandin pavement renewal\Drawings\03_Work_Dwg\CA0013525\0407_Abinojii Mikanah_Plan_2025.dwg - tab:P-3592-03



- NOTES:
1. ALL WORK AND MATERIALS TO BE IN ACCORDANCE WITH THE LATEST REVISION OF THE CITY OF WINNIPEG STANDARD CONSTRUCTION SPECIFICATIONS.
 2. CONTRACTOR TO CONFIRM THE LOCATION OF ALL UTILITIES/SERVICES IN THE FIELD PRIOR TO CONSTRUCTION.
 3. ALL ROADWAY DIMENSIONS SHOWN ARE TO BACK OF CURB/EDGE OF PAVEMENT.
 4. EXISTING ASPHALT PLANED AS SHOWN OR AS DIRECTED BY CONTRACT ADMINISTRATOR.
 5. EXISTING CONCRETE RUBBLIZED AS SHOWN OR AS DIRECTED BY CONTRACT ADMINISTRATOR.
 6. SAWCUT EXISTING CURB AND GUTTER ALONG FACE OF GUTTER AND REMOVE.
 7. CLASS A GEOGRID TO BE INSTALLED OVERLAYING RUBBLIZED CONCRETE AS DIRECTED BY CONTRACT ADMINISTRATOR.
 8. 200mm PARTIAL CONCRETE SLAB PATCHES SHOWN ARE ONLY A REPRESENTATIVE APPROXIMATION OF THE TENDERED QUANTITIES.
 9. STOCKPILE REQUIRED EXCAVATED MATERIAL ALONG MEDIAN SHOULDER TO REGRADE BOULEVARD WHERE PROPOSED PAVEMENT DRAINS TO THE NORTH.
 10. ALL BOULEVARDS HYDRO SEEDED UNLESS OTHERWISE DIRECTED BY CONTRACT ADMINISTRATOR.
 11. ADJUST ALL WATER VALVES, HYDRANTS, MANHOLES, AND CATCH BASINS IN WORK AREA TO GRADE.

WATER MAIN	VALVE	EDGE OF SIDEWALK
LAND DRAINAGE SEWER	CURB STOP	EDGE OF ASPHALT
WASTE WATER SEWER	HYDRO POLE & LIGHT STANDARD	EDGE OF CONCRETE
HYDRO	LIGHT STANDARD OR TRAFFIC SIGNAL	MODIFIED BARRIER CURB
GAS	HYDRO POLE / ANCHOR	BARRIER CURB
COMMUNICATIONS	FENCE	CONCRETE SIDEWALK
SIGNALS	PROPERTY LINE	CONCRETE SLAB
MANHOLE	TEST HOLE / PAVEMENT CORE	PAVEMENT REMOVAL
CATCH BASIN/CATCH PIT	ELEVATIONS	ASPHALT SHOULDER
CURB INLET	CURB RAMP	RUBBLIZATION
UTILITIES ADJUSTED	DETECTABLE WARNING SURFACE TILE	ASPHALT MILL AND FILL
HYDRANT		GRANULAR SANDWICH
EXISTING	LEGEND-PLAN	LEGEND-PLAN

LOCATIONS APPROVED UNDERGROUND STRUCTURES		
SIGNED BY: _____		
SUPV UG STRUCTURES		DATE _____
LOCATION OF UNDERGROUND STRUCTURES AS SHOWN ARE BASED ON THE BEST INFORMATION AVAILABLE BUT NO GUARANTEE IS GIVEN THAT ALL EXISTING UTILITIES ARE SHOWN OR THAT THE GIVEN LOCATIONS ARE EXACT CONFIRMATION OF EXISTENCE AND EXACT LOCATION OF ALL SERVICES MUST BE OBTAINED FROM THE INDIVIDUAL UTILITIES BEFORE PROCEEDING		
NO.	REVISIONS	DATE

G.B.A. ELEV. 231.926

BOLT ON LAMP STANDARD SW CORNER RIVER ROAD AND ABINOJII MIKANAH

7			
6			
5			
4			
3			
2			
1			
0	ISSUED FOR TENDER	2025/03/24	KG
NO.	REVISIONS	DATE	BY

DESIGNED BY	KG	CHECKED BY	SS
DRAWN BY	KG	APPROVED BY	SS
HOR. SCALE	1:500	RELEASED FOR CONSTRUCTION	----
VERTICAL	N/A	DATE	----

WSP Canada Inc. 1600 Buffalo Place Winnipeg, MB R3T 6B8 t. 204.477.6650 f. 204.474.2864 www.wsp.com
ENGINEER'S SEAL
CONSULTANT ACAD DWG. NO. CA0013525.0407-103

THE CITY OF WINNIPEG PUBLIC WORKS DEPARTMENT ENGINEERING SERVICES DIVISION
ABINOJII MIKANAH WESTBOUND - RUBBLIZATION AND MILL & FILL PLAN DRAWING PAVEMENT RENEWAL STA. 15+40 TO STA. 22+40
CITY DRAWING NUMBER P-3592-03 SHEET 03 OF 25 TENDER NO. 166-2025

METRIC
WHOLE NUMBERS INDICATE MILLIMETRES
DECIMALIZED NUMBERS INDICATE METRES

**ENGINEERS
GEOSCIENTISTS
MANITOBA**
Certificate of Authorization
WSP Canada Inc.
No. 5750

FOR TENDER PURPOSES ONLY
NOT FOR CONSTRUCTION