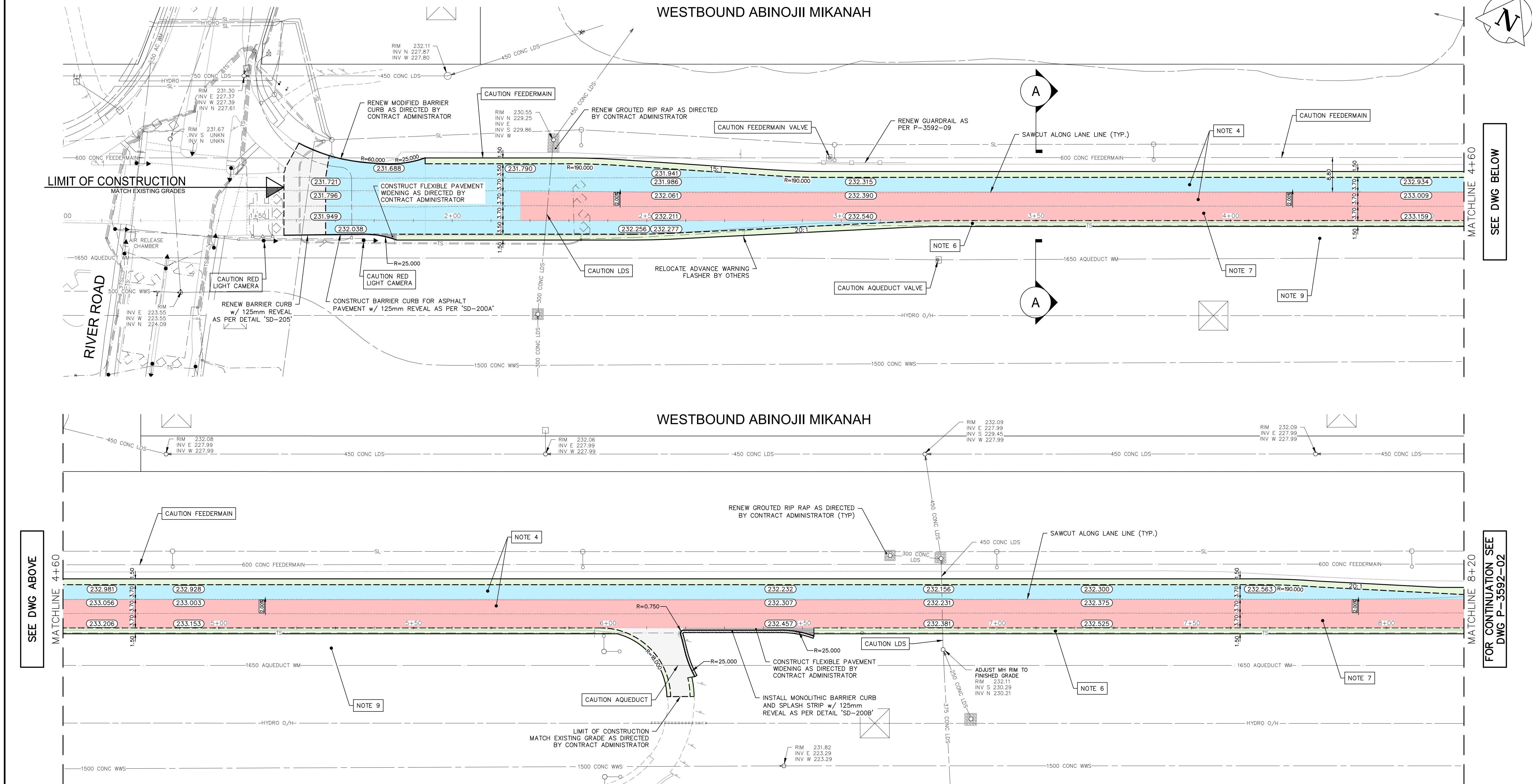


Mar 24, 2025 — 1:27pm
P:\2023\CA0013525\0407 - Bishop grandin pavement renewal\Drawings\03_Work_Dwg\CA0013525\0407_Abinojii Mikanah_Plan_2025.dwg — tab:P-3592-01



NOTES:

1. ALL WORK AND MATERIALS TO BE IN ACCORDANCE WITH THE LATEST REVISION OF THE CITY OF WINNIPEG STANDARD CONSTRUCTION SPECIFICATIONS.
2. CONTRACTOR TO CONFIRM THE LOCATION OF ALL UTILITIES/SERVICES IN THE FIELD PRIOR TO CONSTRUCTION.
3. ALL ROADWAY DIMENSIONS SHOWN ARE TO BACK OF CURB/EDGE OF PAVEMENT.
4. EXISTING ASPHALT PLANED AS SHOWN OR AS DIRECTED BY CONTRACT ADMINISTRATOR.
5. EXISTING CONCRETE RUBBLIZED AS SHOWN OR AS DIRECTED BY CONTRACT ADMINISTRATOR.
6. SAWCUT EXISTING CURB AND GUTTER ALONG FACE OF GUTTER AND REMOVE.
7. CLASS A GEOGRID TO BE INSTALLED OVERLAYING RUBBLIZED CONCRETE AS DIRECTED BY CONTRACT ADMINISTRATOR.
8. 200mm PARTIAL CONCRETE SLAB PATCHES SHOWN ARE ONLY A REPRESENTATIVE APPROXIMATION OF THE TENDERED QUANTITIES.
9. STOCKPILE REQUIRED EXCAVATED MATERIAL ALONG MEDIAN SHOULDER TO REGRADE BOULEVARD WHERE PROPOSED PAVEMENT DRAINS TO THE NORTH.
10. ALL BOULEVARDS HYDRO SEEDED UNLESS OTHERWISE DIRECTED BY CONTRACT ADMINISTRATOR.
11. ADJUST ALL WATER VALVES, HYDRANTS, MANHOLES, AND CATCH BASINS IN WORK AREA TO GRADE.

---	WATER MAIN	---	⊗	VALVE	---	---	EDGE OF SIDEWALK	---
---	LAND DRAINAGE SEWER	---	♂	CURB STOP	---	---	EDGE OF ASPHALT	---
---	WASTE WATER SEWER	---	---	HYDRO POLE & LIGHT STANDARD	---	---	EDGE OF CONCRETE	---
---	HYDRO	---	HP	LIGHT STANDARD OR TRAFFIC SIGNAL	---	---	MODIFIED BARRIER CURB	---
---	GAS	---	HP	HYDRO POLE / ANCHOR	---	---	BARRIER CURB	---
---	COMMUNICATIONS	---	---	FENCE	---	---	CONCRETE SIDEWALK	---
---	SIGNALS	---	---	PROPERTY LINE	---	---	CONCRETE SLAB	---
○	MANHOLE	---	⊕	TEST HOLE / PAVEMENT CORE	---	---	PAVEMENT REMOVAL	---
□	CATCH BASIN/CATCH PIT	---	⊕	ELEVATIONS	(231.000)	---	ASPHALT SHOULDER	---
△	CURB INLET	---	▽	CURB RAMP	---	---	RUBBLIZATION	---
◇	UTILITIES ADJUSTED	---	△ ○	DETECTABLE WARNING SURFACE TILE	---	---	ASPHALT MILL AND FILL	---
◇	HYDRANT	---	◆	LEGEND-PLAN	---	---	GRANULAR SANDWICH	---
EXISTING	LEGEND-PLAN	PROPOSED	EXISTING	LEGEND-PLAN	PROPOSED	EXISTING	LEGEND-PLAN	PROPOSED

LOCATIONS APPROVED UNDERGROUND STRUCTURES

SIGNED BY: _____ DATE: _____
SUPV UG STRUCTURES

LOCATION OF UNDERGROUND STRUCTURES AS SHOWN ARE BASED ON THE BEST INFORMATION AVAILABLE BUT NO GUARANTEE IS GIVEN THAT ALL EXISTING UTILITIES ARE SHOWN OR THAT THE GIVEN LOCATIONS ARE EXACT CONFIRMATION OF EXISTENCE AND EXACT LOCATION OF ALL SERVICES MUST BE OBTAINED FROM THE INDIVIDUAL UTILITIES BEFORE PROCEEDING

G.B.A. ELEV.	BOLT ON LAMP STANDARD SW CORNER RIVER ROAD AND ABINOJII MIKANAH	231.926
7		
6		
5		
4		
3		
2		
1		
0	ISSUED FOR TENDER	2025/03/24 KG
NO.	REVISIONS	DATE BY

wsp		WSP Canada Inc. 1600 Buffalo Place Winnipeg, MB R3T 6B8 t. 204.477.6650 f. 204.474.2864 www.wsp.com	
DESIGNED BY	KG	CHECKED BY	SS
DRAWN BY	KG	APPROVED BY	SS
HOR. SCALE	1:500	RELEASED FOR CONSTRUCTION	---
VERTICAL	N/A	DATE	---

ENGINEER'S SEAL	
CONSULTANT ACAD DWG. NO.	CA0013525.0407-101

THE CITY OF WINNIPEG
PUBLIC WORKS DEPARTMENT
ENGINEERING SERVICES DIVISION

ABINOJII MIKANAH WESTBOUND - RUBBLIZATION AND MILL & FILL
PLAN DRAWING
PAVEMENT RENEWAL
STA. 1+56.78 TO STA. 8+20

CITY DRAWING NUMBER
P-3592-01
SHEET 01 OF 25
TENDER NO. 166-2025

METRIC

WHOLE NUMBERS INDICATE MILLIMETRES
DECIMALIZED NUMBERS INDICATE METRES

**ENGINEERS
GEOSCIENTISTS
MANITOBA**
Certificate of Authorization
WSP Canada Inc.
No. 5750

FOR TENDER PURPOSES ONLY

NOT FOR CONSTRUCTION