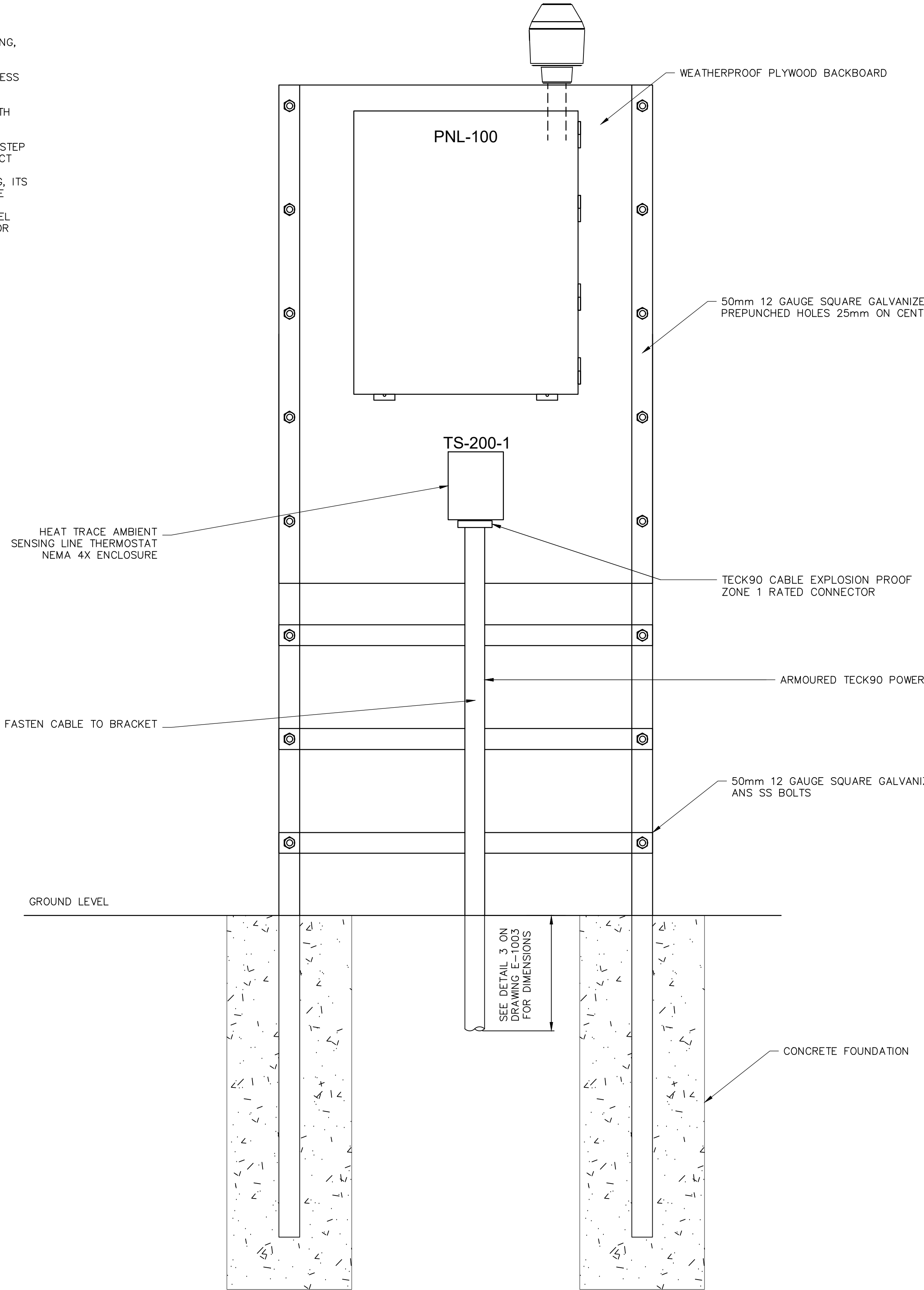


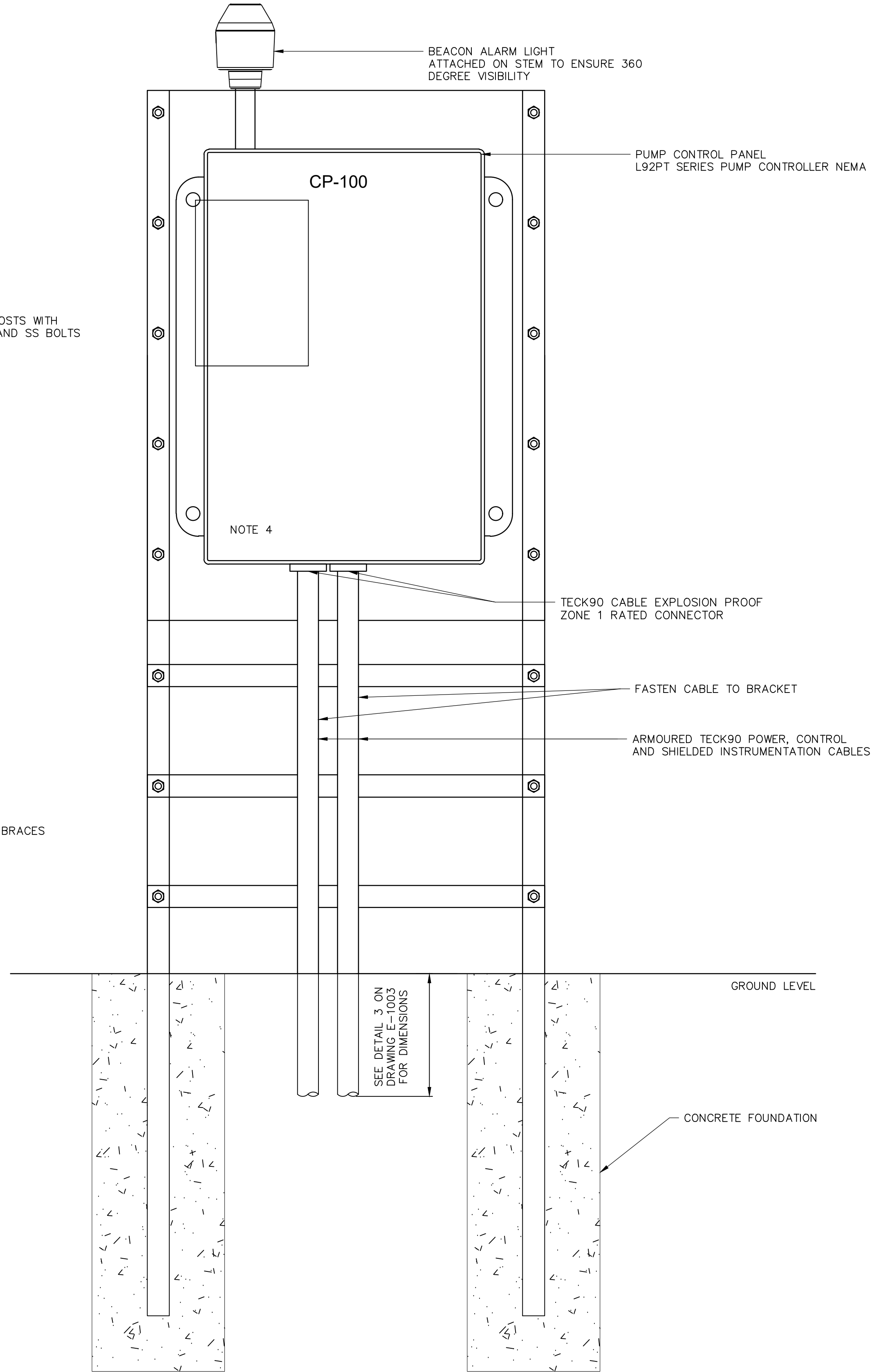
NOTES:

1. CONTRACTOR TO PROVIDE DESIGN FOR SUPPORT STRUCTURE WITH CONSIDERATION FOR WIND LOADING, ENVIRONMENTAL CONDITIONS ETC. REFER TO SPECIFICATION 33.11 30.01 FOR DETAILS.
2. PROVIDE AND INSTALL BOLLARDS ALONG THE ACCESS ROAD TO PROTECT SUPPORT STRUCTURE FROM TRAFFIC.
3. ALL WIRING WITHIN AND MOUNTING TO COMPLY WITH LATEST CEC.
4. CONTRACTOR TO FASTEN UV RATED LAMACOID TO ENCLOSURE PANEL DOOR, LAMACOID TO PROVIDE STEP BY STEP INSTRUCTIONS ON METHOD TO DISCONNECT PUMP FROM BREAKOUT JUNCTION BOX.
5. NOT ALL CABLES ARE DEPICTED ON THIS DRAWING, ITS THE CONTRACTORS RESPONSIBILITY TO REVIEW THE PROJECT REQUIREMENT IN ITS ENTIRETY.
6. THIS DRAWING IS INTENDED TO PROVIDE HIGH LEVEL GUIDELINE TO THE PANEL STRUCTURE, CONTRACTOR TO MODIFY THE LAYOUT AS NEEDED TO SUIT THE CONTROL PANELS DIMENSIONS. SUBMIT THE FINAL LAYOUT TO THE CONTRACT ADMINISTRATOR FOR REVIEW AND ACCEPTANCE.



1 REAR ELEVATION

N.T.S.



2 FRONT ELEVATION

N.T.S.

TENDER NO. 107-2025

ENGINEERS
GEOSCIENTISTS
MANITOBA

Certificate of Authorization
AECOM Canada ULC
No. 4671

METRIC

WHOLE NUMBERS INDICATE MILLIMETRES
DECIMALIZED NUMBERS INDICATE METRES

WARNING

IF POWER EQUIPMENT OR EXPLOSIVES ARE TO BE USED FOR EXCAVATION ON THIS PROJECT THE CONTRACTOR MUST:

1) NOTIFY THE GAS COMPANY OF THE PROPOSED LOCATION OF EXCAVATION.

2) TAKE PRECAUTION TO AVOID DAMAGE TO GAS COMPANY INSTALLATIONS.

SEE PROVINCIAL REGULATION 210/72 FOR DETAILS

LOCATION APPROVED
UNDERGROUND STRUCTURES

SUPV. U/G STRUCTURES COMMITTEE

DATE

NOTE:

LOCATION OF UNDERGROUND STRUCTURES AS SHOWN ARE BASED ON THE BEST INFORMATION AVAILABLE BUT NO GUARANTEE IS GIVEN THAT ALL EXISTING UTILITIES ARE SHOWN OR THAT THE GIVEN LOCATIONS ARE EXACT. CONFIRMATION OF EXISTENCE AND EXACT LOCATION OF ALL SERVICES MUST BE OBTAINED FROM THE INDIVIDUAL UTILITIES BEFORE PROCEEDING WITH CONSTRUCTION.

B.M.
ELEV.

CONSTRUCTION COMPLETION DATE: YYYY MM DD

00	ISSUED FOR TENDER	2025/03/31	MS
NO.	REVISIONS	DATE	BY

AECOM

DESIGNED BY MS
CHECKED BY KO
DRAWN BY TW
APPROVED BY
SCALE: HORIZONTAL N.T.S.
VERTICAL
DATE 2025 04 01

ENGINEER'S SEAL

CONSULTANT DRAWING NUMBER
E-1004

Winnipeg

THE CITY OF WINNIPEG
WATER AND WASTE DEPARTMENT
SOLID WASTE SERVICES

BRADY ROAD RESOURCE MANAGEMENT FACILITY
CELL 35
PANEL MOUNTING DETAILS

SHEET 22 OF 27
CITY DRAWING NUMBER
1-0400L-E0004-001

PLOT DATE: 2025 04 01

FILE PATH: C:\Users\pedersen\DC\ACCDocs\AECOM\EN-AMER(CAN)-60733855-COW Brady Dump\Project Files\900 Design Collaboration\910 CAD\20-SHT
FILE NAME: 1-0400L-E0004-001.dwg