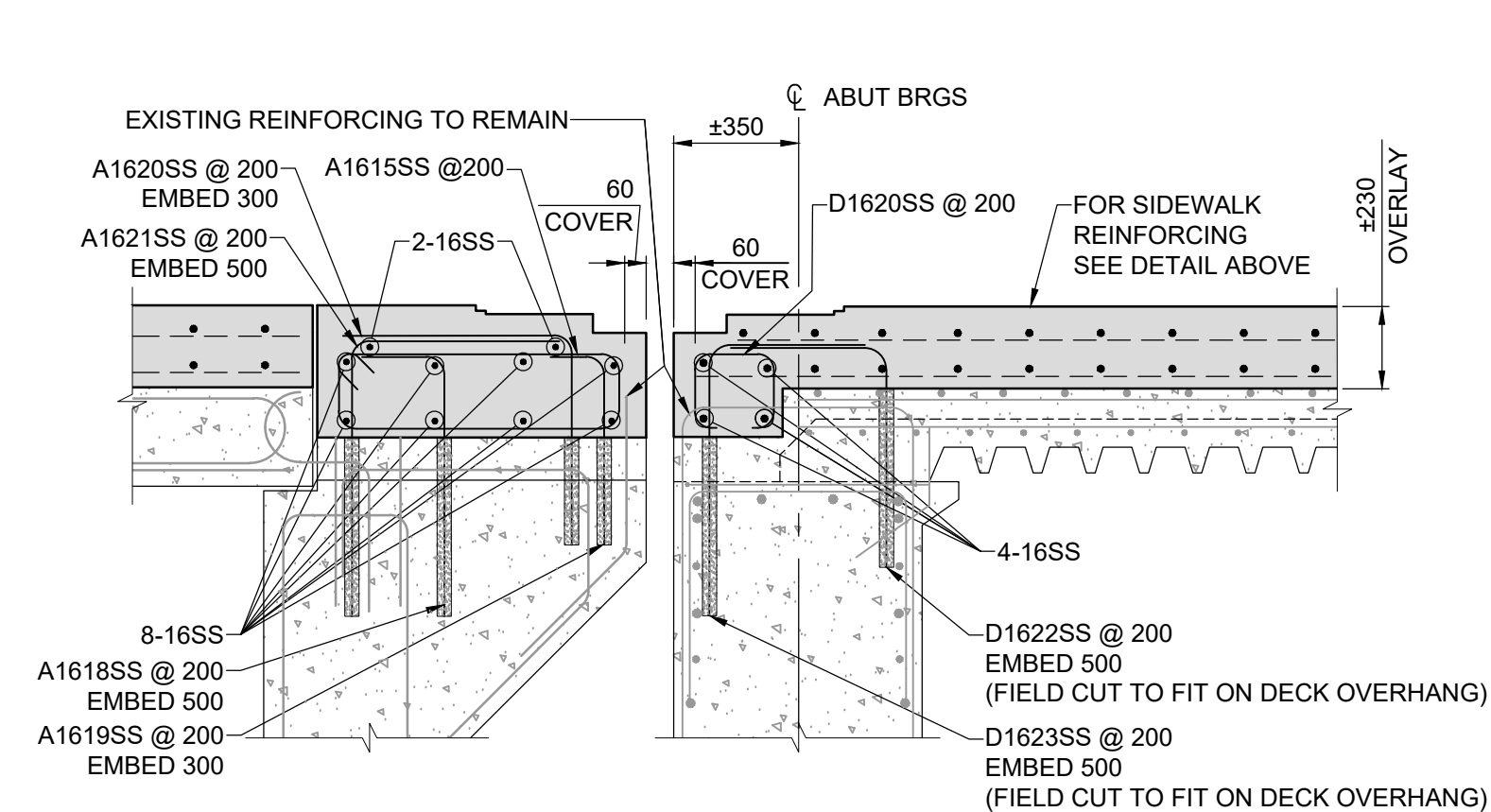


### PLAN OF BRIDGE DECK AND ABUTMENT PROPOSED REINFORCING IN CONCRETE OVERLAY

SCALE: 1:150



**SECTION**  
SCALE: 1:20

**LEGEND:**

EXISTING

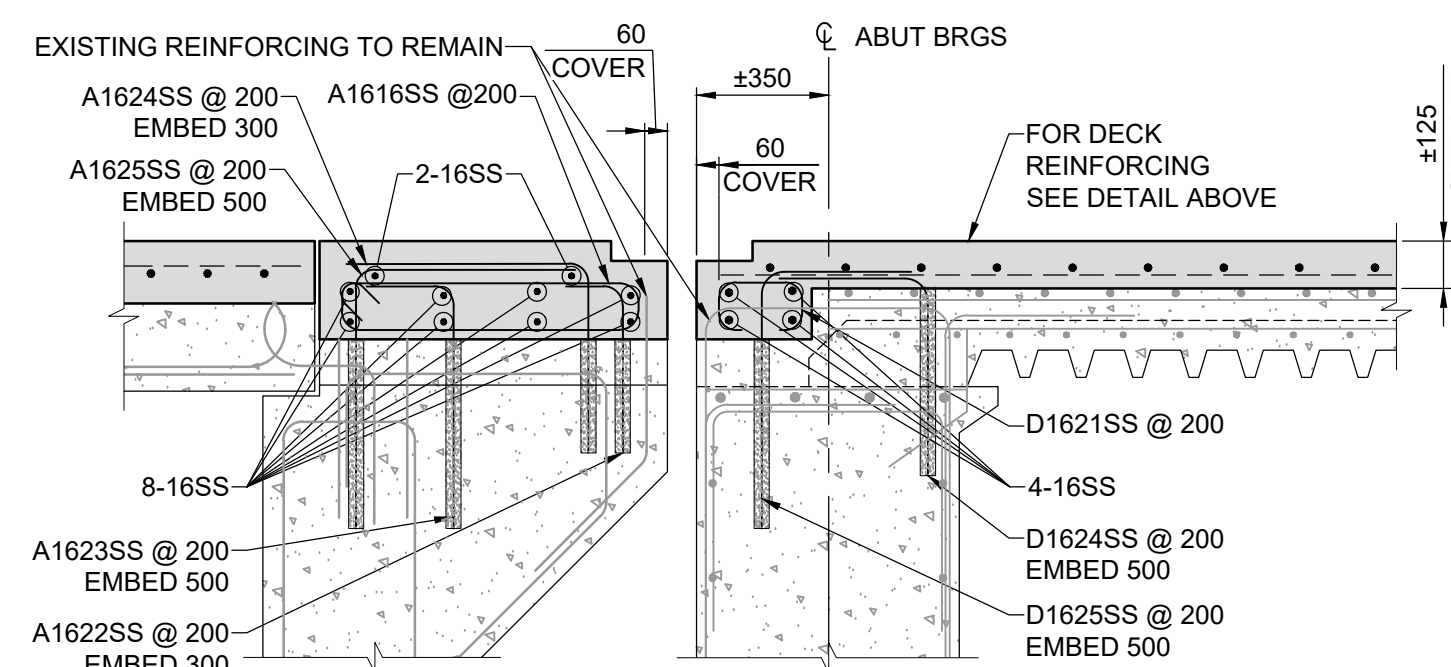
NEW CONCRETE

## METRIC

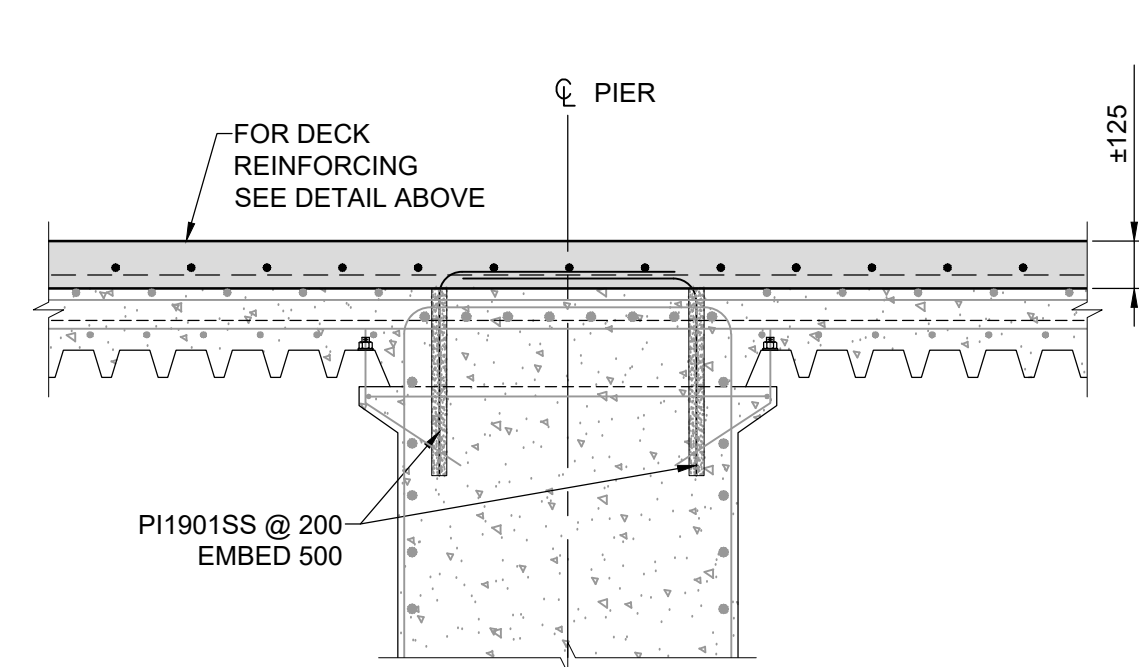
WHOLE NUMBERS INDICATE MILLIMETRES  
DECIMALIZED NUMBERS INDICATE METRES

NOTE:

- NOTE:
1. REFER TO SHEET 104 AND 112 FOR ABUTMENT REINFORCING.
  2. REFER TO SHEET 104 SECTION B FOR ADDITIONAL TRANSVERSE REINFORCING MARK NUMBERS.

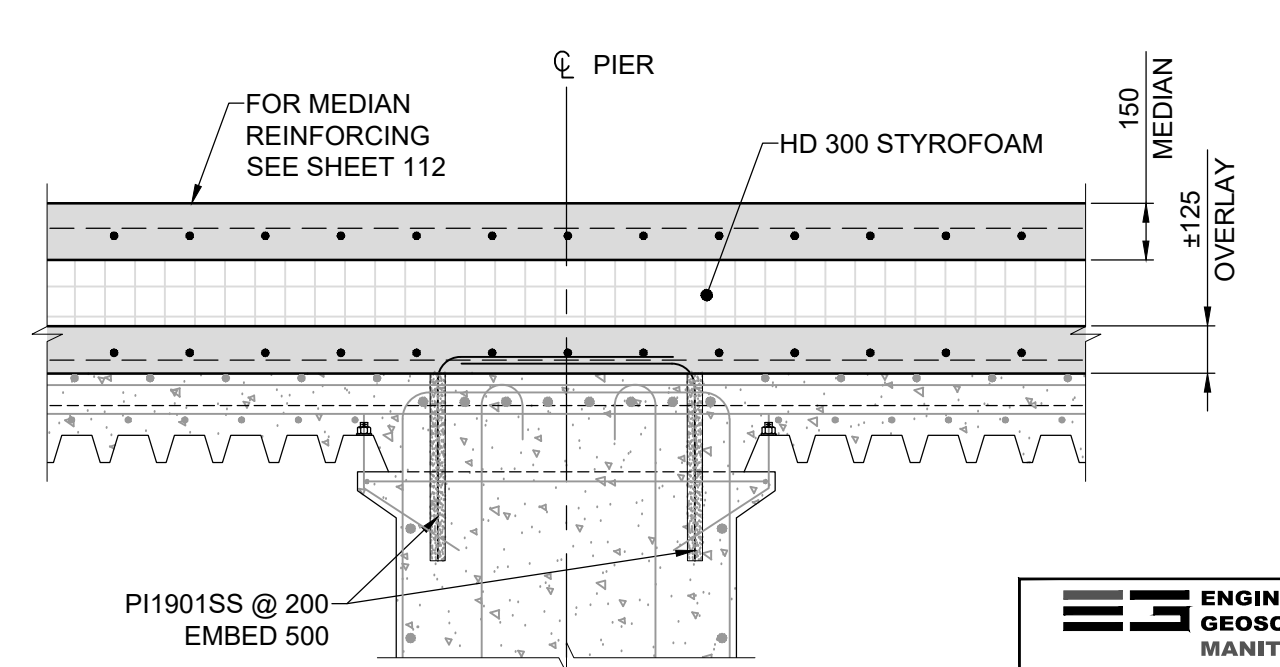


**SECTION**  
SCALE: 1:20



**SECTION**  
SCALE: 1:20

SCALE: 1:20



**SECTION**  
SCALE: 1:20


SCALE: 1:20



ENDER NO. 975-2024

<h2 style="margin: 0;">LOCATION APPROVED</h2> <h3 style="margin: 0;">UNDERGROUND STRUCTURES</h3>	
SUPR. U/G STRUCTURES _____ COMMITTEE	DATE _____
<p><b>NOTE:</b></p> <p>LOCATION OF UNDERGROUND STRUCTURES AS SHOWN ARE BASED ON THE BEST INFORMATION AVAILABLE BUT NO GUARANTEE IS GIVEN THAT ALL EXISTING UTILITIES ARE SHOWN OR THAT THE GIVEN LOCATIONS ARE EXACT. CONFIRMATION OF EXISTENCE AND EXACT LOCATION OF ALL SERVICES MUST BE OBTAINED FROM THE INDIVIDUAL UTILITIES BEFORE PROCEEDING WITH CONSTRUCTION.</p>	

[illegible]

 <div><h1>Stantec</h1><p>500 - 311 Portage Avenue, Winnipeg M8 Canada R3B 2B8 Tel. 204.489.5900 Fax. 204.453.9012 <a href="http://www.stantec.com">www.stantec.com</a></p></div>			
DESIGNED BY	AGG	CHECKED BY	MG
DRAWN BY	JPW	APPROVED BY	BE
HOR SCALE AS SHOWN VERT SCALE AS SHOWN DATE		RELEASED FOR CONSTRUCTION  DATE	

PROFESSIONAL'S SEAL

ORIGINAL DRAWING  
REV No. 0

SEALED BY:

A.G. GILARSKI  
2025-02-28

CONSULTANT FILE NAME  
132500075-STR-DECK03.dwg

 <div> <h1>THE CITY OF WINNIPEG</h1> <h2>PUBLIC WORKS DEPARTMENT</h2> <h3>ENGINEERING DIVISION</h3> </div>	
<div> <h3>PEMBINA HIGHWAY OVERPASS</h3> <h3>AT ABINOJII MIKANAH</h3> <h3>REHABILITATION AND RELATED WORKS</h3> <h3>BRIDGE REHABILITATION WORKS</h3> <h3>DECK AND ABUTMENT MODIFICATIONS 2 OF 3</h3> </div>	<div>CITY DRAWING NUMBER</div> <div>8215-25-15</div>
	<div>SHEET OF</div> <div>103 131</div>
	<div>103</div>