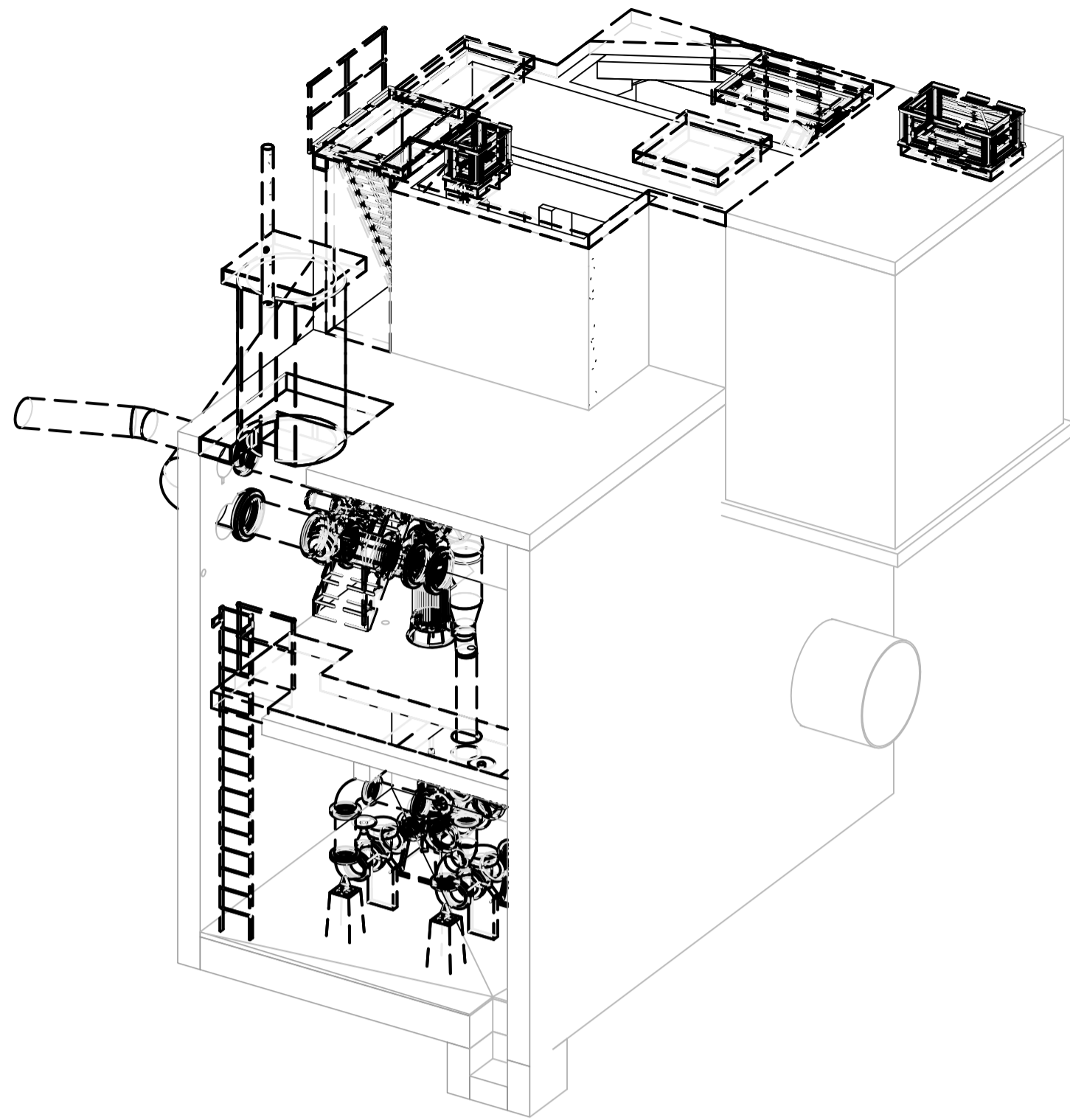
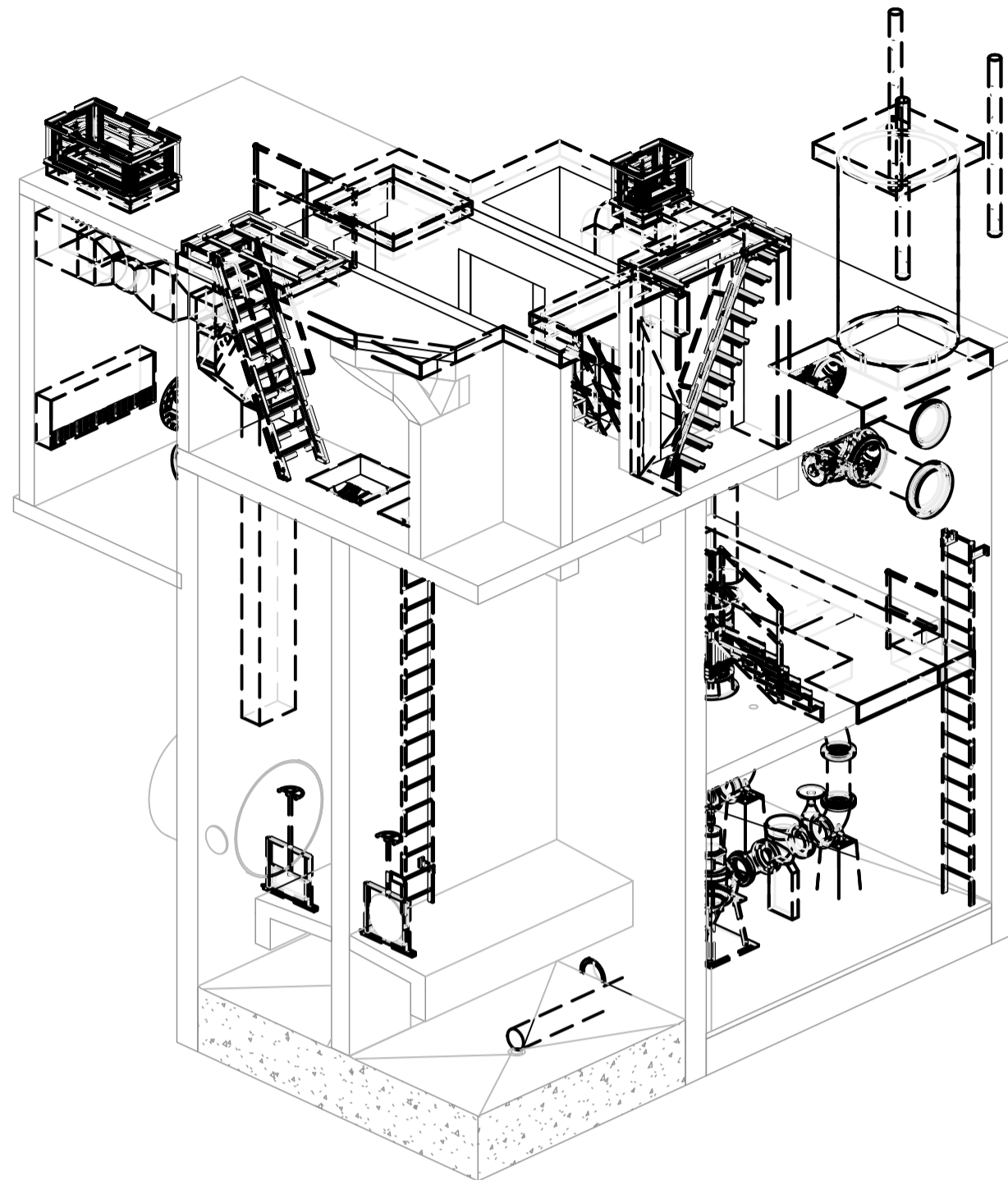


LAST SAVE: 2024/11/13 - 7:16am
PATH: M:\V-Dwg\00 City of Winnipeg\009 - Windsor Park Lift Station Upgrades\AutoDesk\ACAD\1-0197L-D0003-001-00.dwg

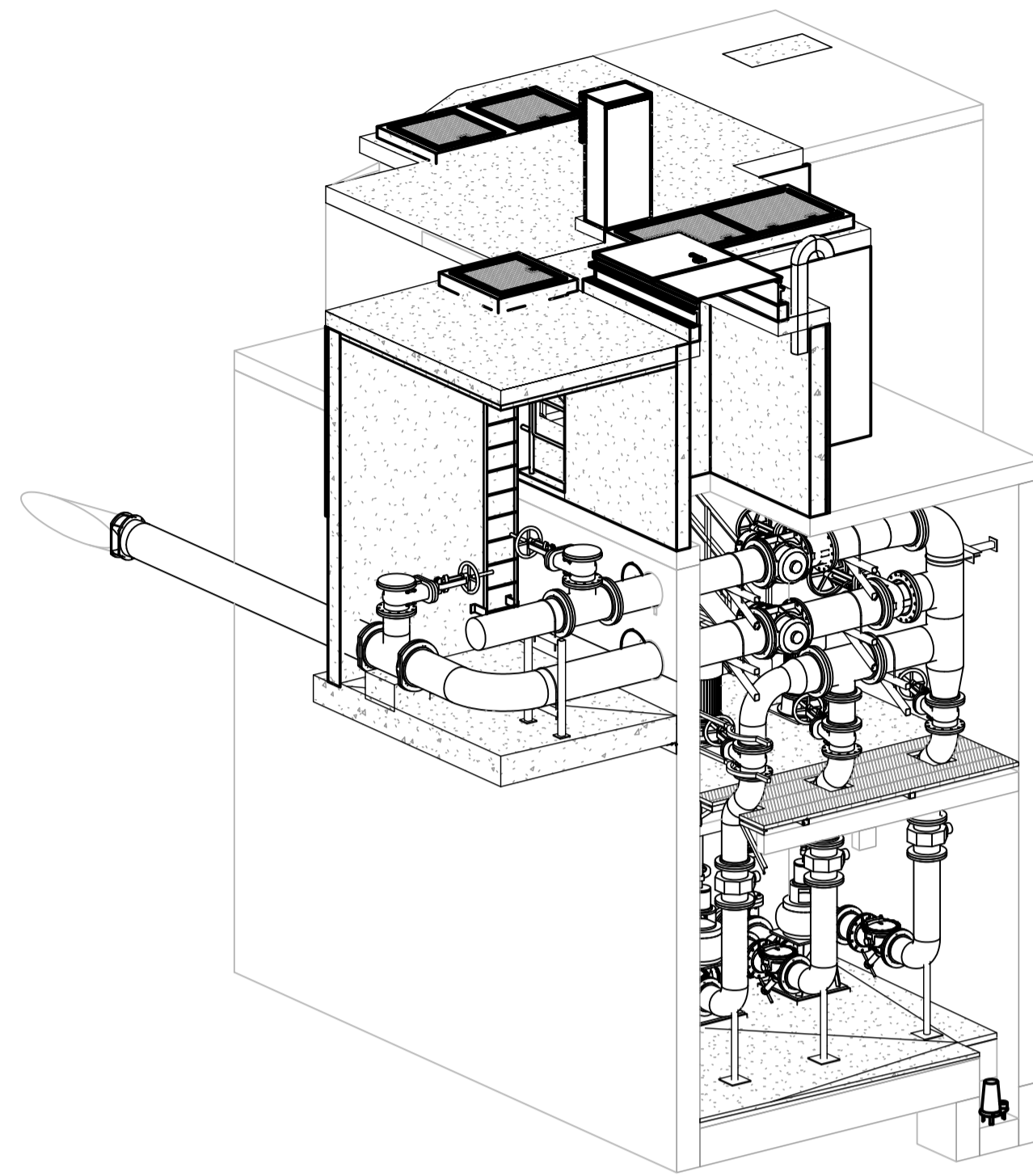
A1 SIZE - 594mm x 841mm



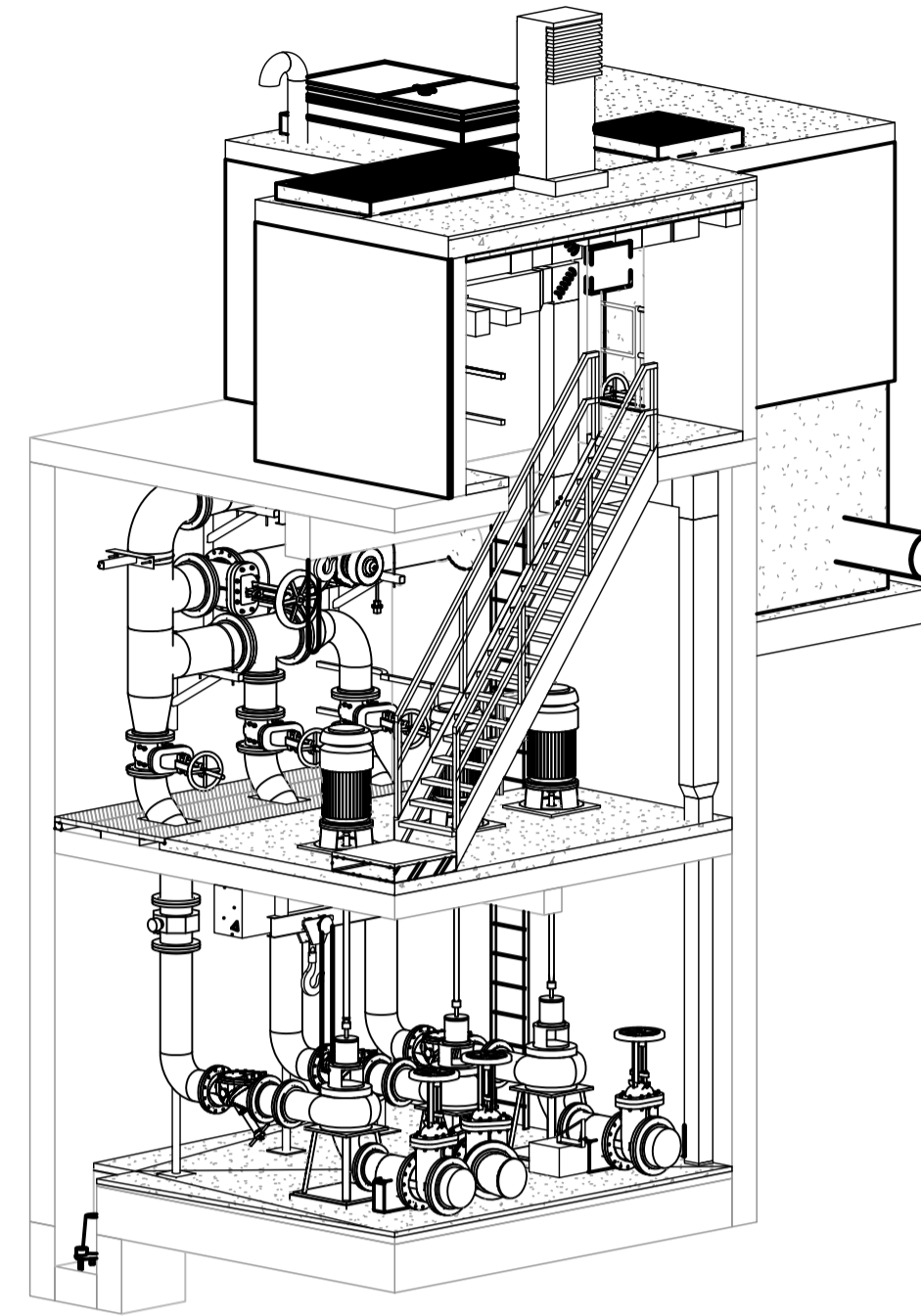
1 ISOMETRIC VIEW - DEMOLITION
SCALE: 1:75



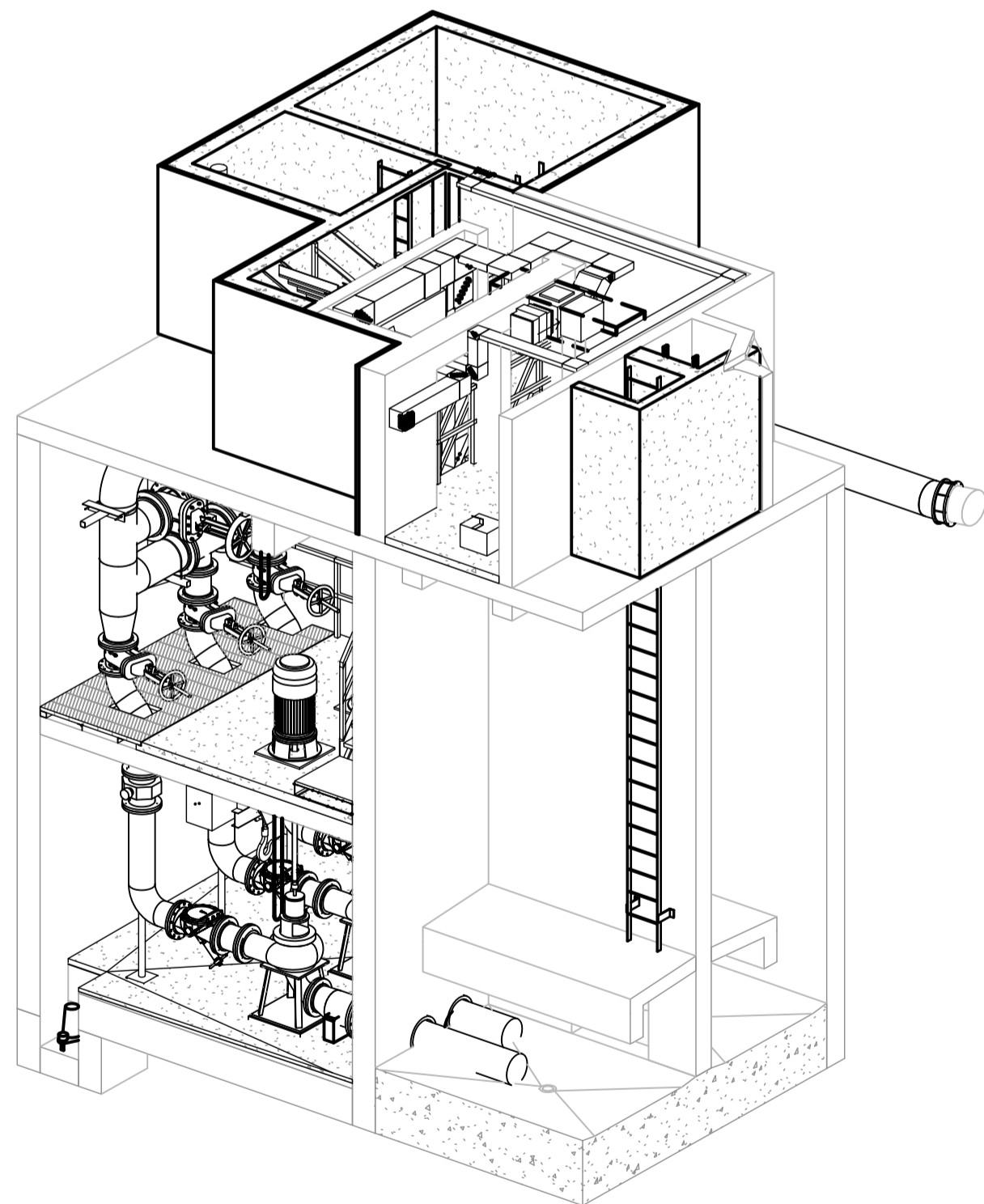
2 ISOMETRIC VIEW - DEMOLITION
SCALE: 1:75



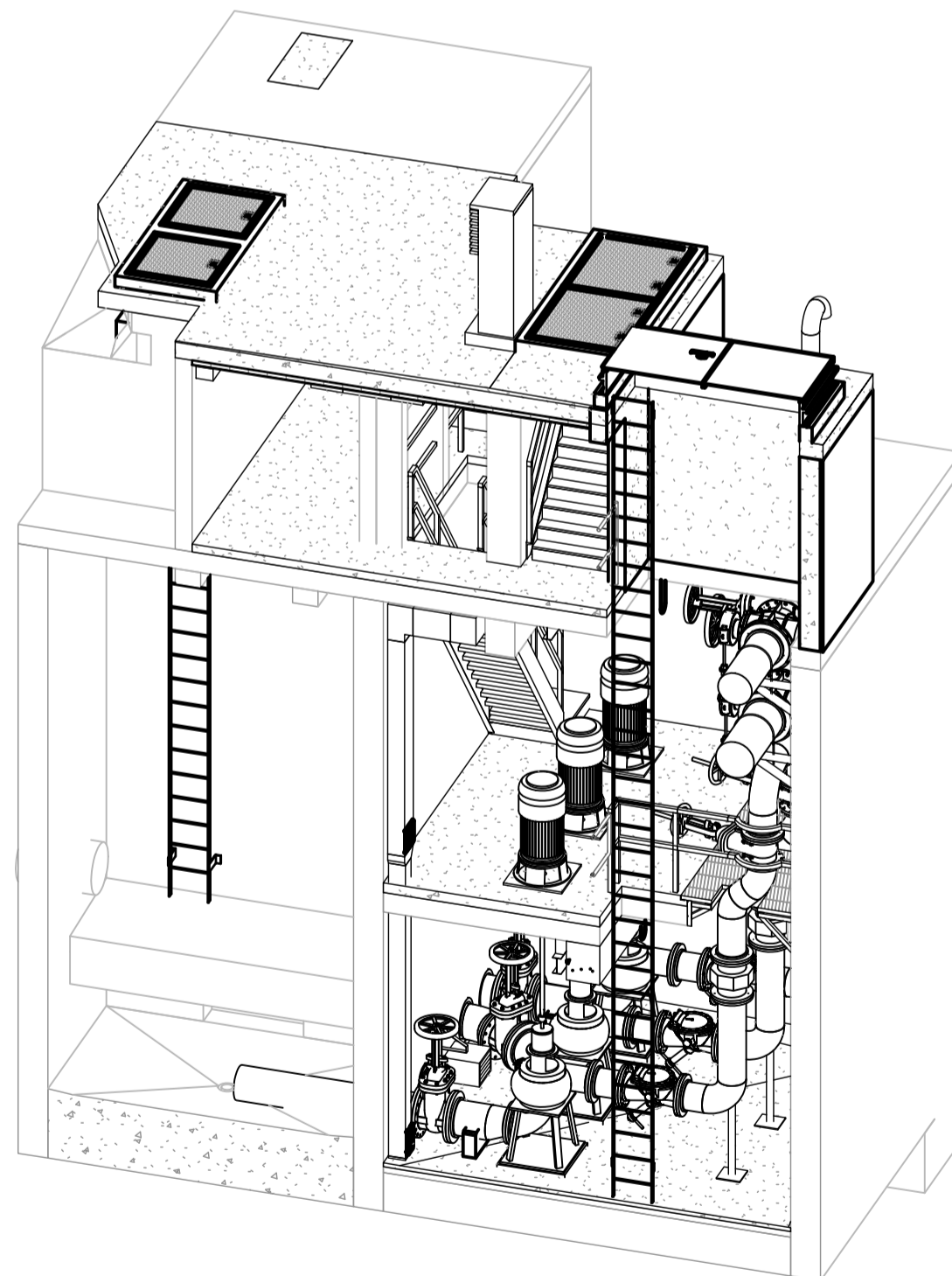
3 ISOMETRIC VIEW - NEW WORK
SCALE: 1:75



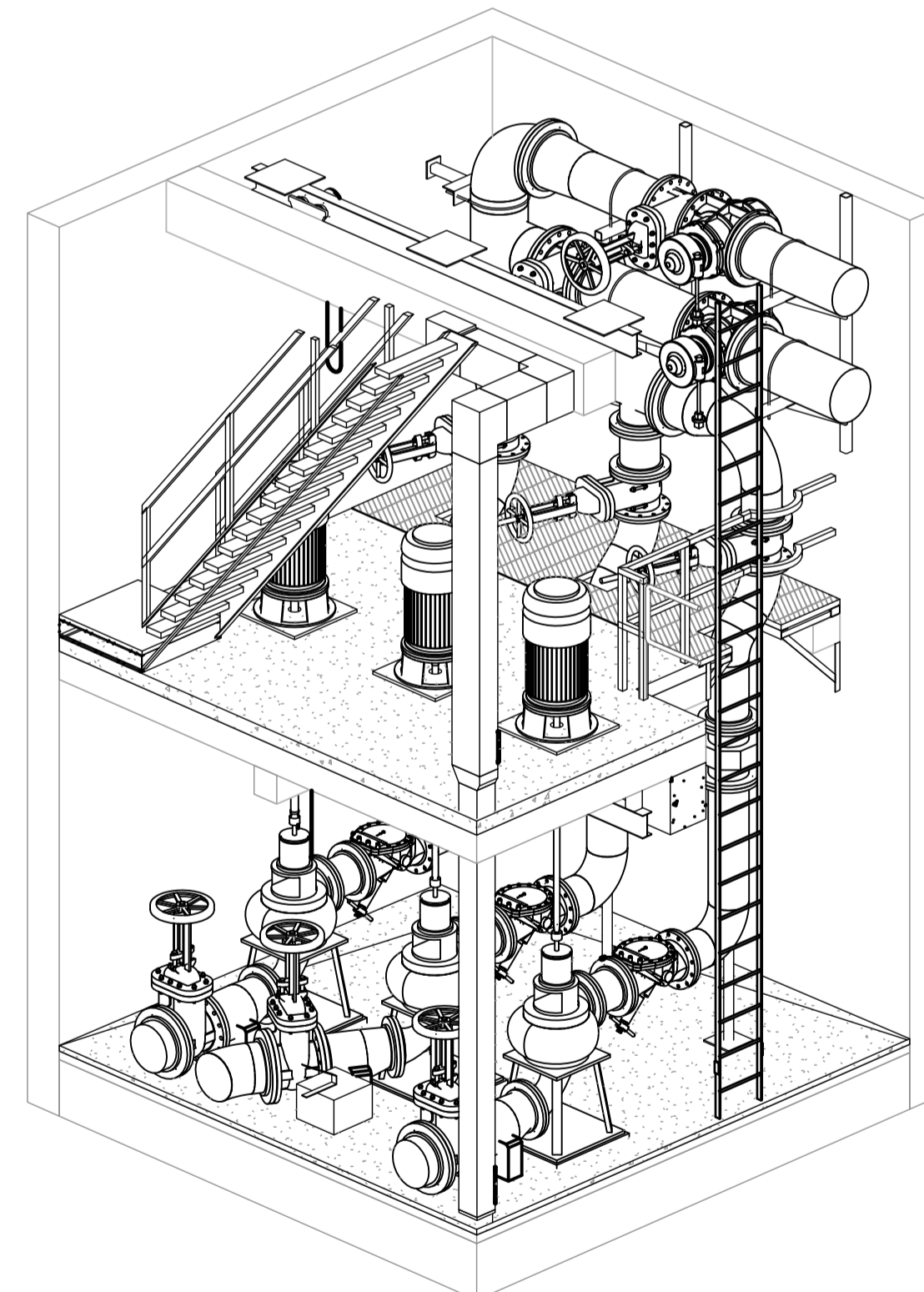
4 ISOMETRIC VIEW - NEW WORK
SCALE: 1:75



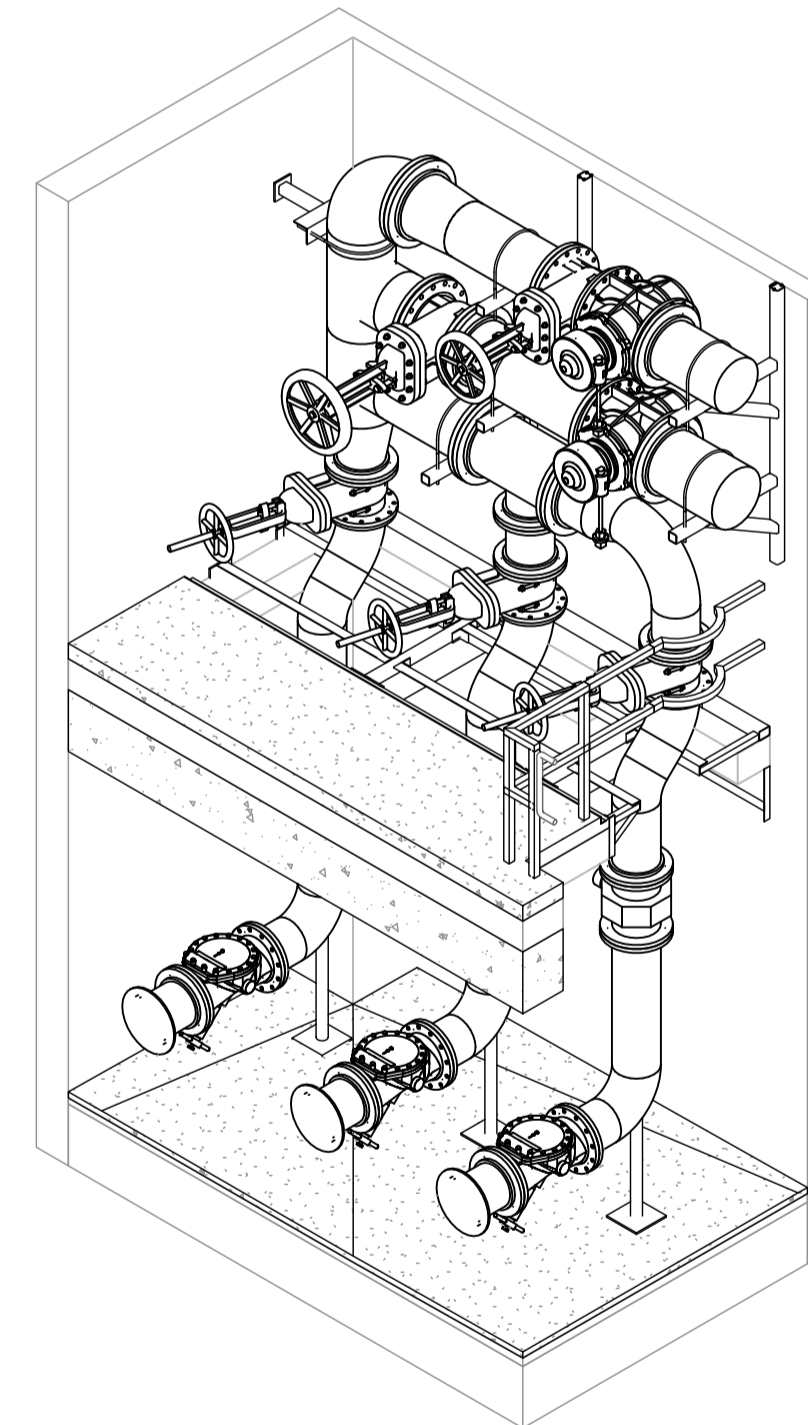
5 ISOMETRIC VIEW - NEW WORK
SCALE: 1:75



6 ISOMETRIC VIEW - NEW WORK
SCALE: 1:75



7 ISOMETRIC VIEW - NEW WORK
SCALE: 1:50

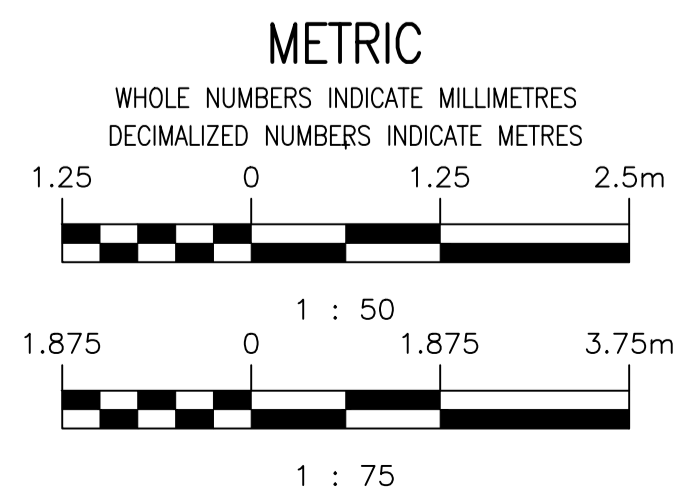


8 ISOMETRIC VIEW - NEW WORK
SCALE: 1:50

GENERAL NOTES:

1. ALL ITEMS SHOWN BOLD DASHED LINES INDICATE ITEMS TO BE DEMOLISHED. SOLID AND GREY LINES INDICATE EXISTING TO REMAIN. SOLID BOLD LINES INDICATE NEW WORK. REFER TO DESIGNATED DISCIPLINE.

9		
8		
7		
6		
5		
4		
3		
2		
1		
NO.	DRAWING NUMBER	REFERENCE DRAWINGS TITLE

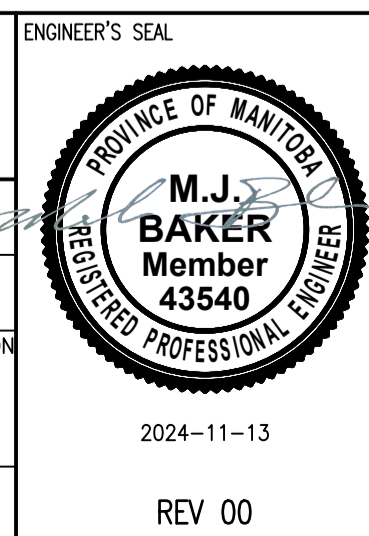


**ENGINEERS
GEOSCIENTISTS
MANITOBA**

Certificate of Authorization
MPE, a division of Englobe Corp.
No. 4968 Date: **NOV 13, 2024**

NO.	REVISIONS	DATE	DESIGN	CHECK
00	ISSUED FOR CONSTRUCTION, B.O. 936-2024	2024-11-13	MJB	MJB

MPE a division of Englobe	
DESIGNED BY: M. BAKER	CHECKED BY: M. BAKER
DRAWN BY: J. BALVERDE	APPROVED BY: M. BAKER
SCALE: AS SHOWN	RELEASED FOR CONSTRUCTION BY: DATE:
DATE: 2024-11-13	DATE:
CONSULTANT NO.:	8400-009-00



THE CITY OF WINNIPEG WATER AND WASTE DEPARTMENT			
WINDSOR PARK LIFT STATION 2025 UPGRADES ISOMETRIC VIEWS			
CITY DRAWING NUMBER 1-0197L-D0003	SHEET 001	REV. 00	SIZE A1

1-0197L-D0003-001-00.dwg