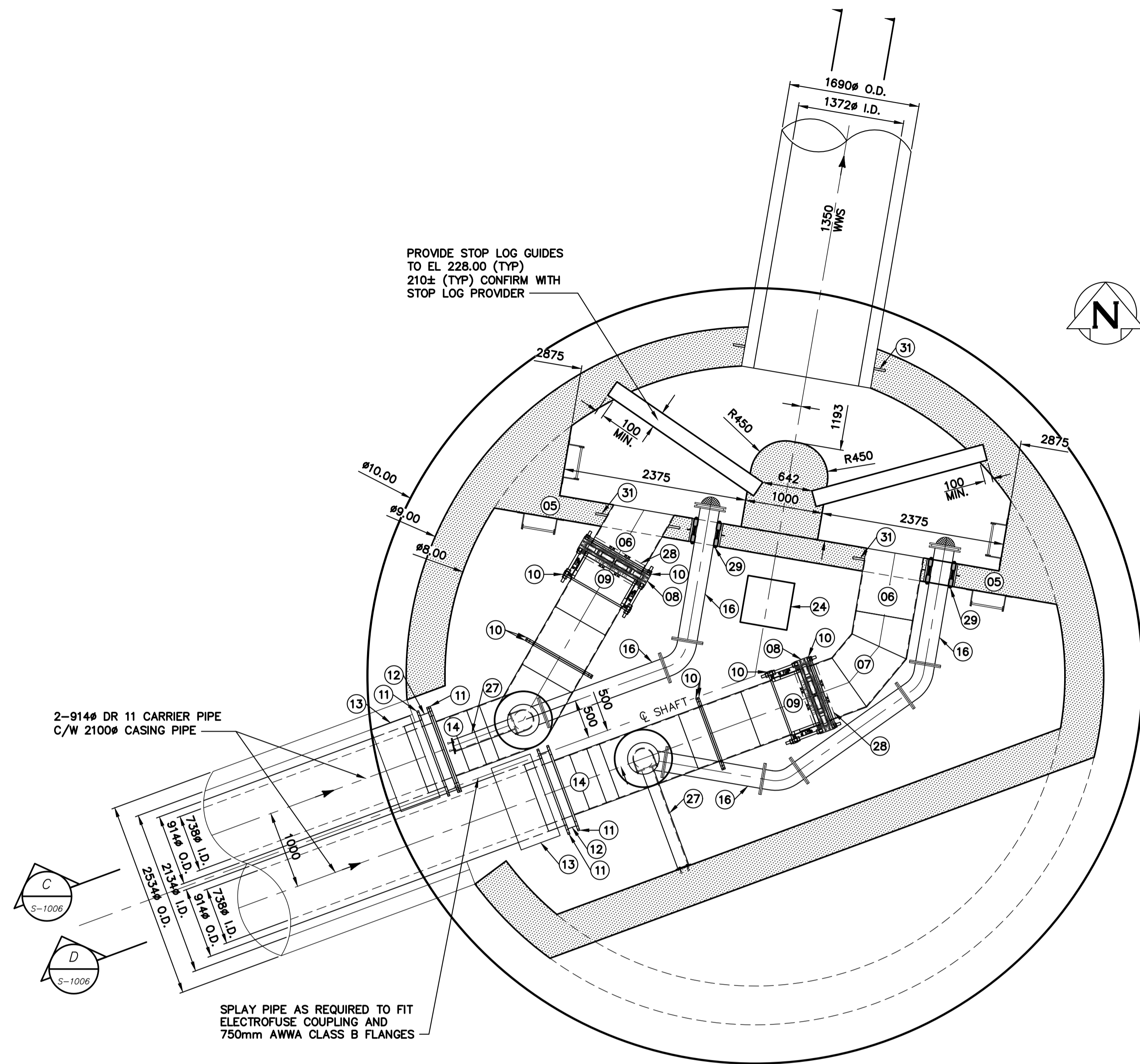


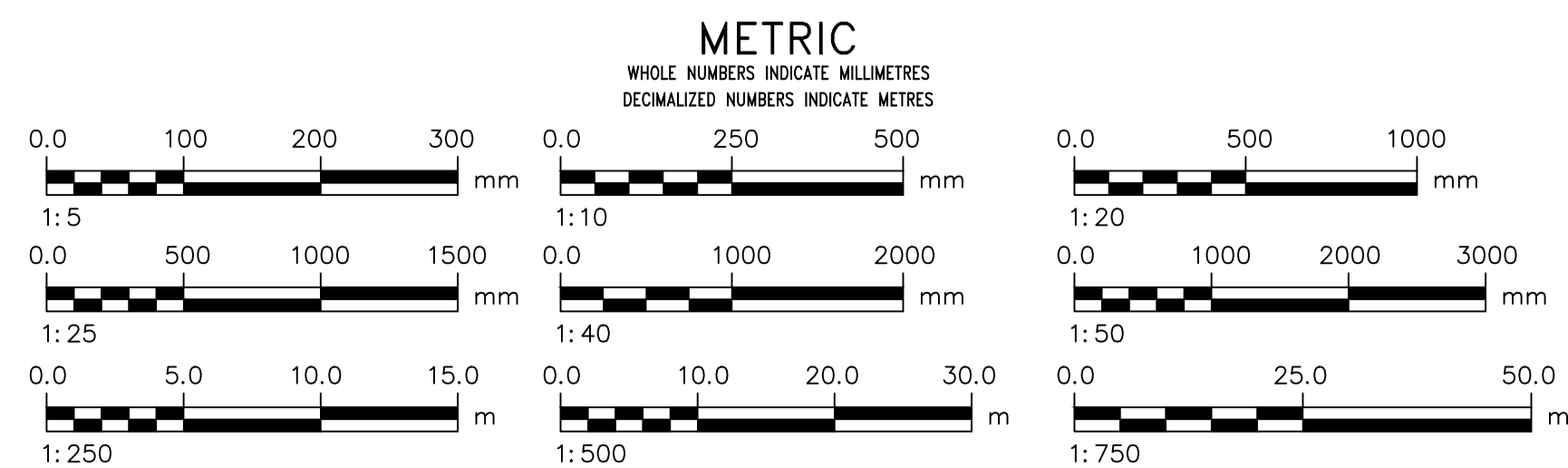
ROOF PLAN - EL 232.60
Scale 1:40



SILL PLAN - EL 218.900
Scale 1:40

ITEM	DESCRIPTION	QTY	SIZE
01	TYPE J AL HATCH	1	1200 x 1800
02	TYPE J AL HATCH	2	900 x 900
03	TYPE J AL HATCH	2	750 x 750
04	TYPE J AL HATCH	2	600 x 2400
05	LADDER. SEE DETAIL "1", DWG. S-4001	4	
06	WALL PIECE	2	762mm
07	60° FRP FABRICATED BEND	1	762mm
08	KNIFE GATE VALVE	2	762mm
09	RESTRAINED DISMANTLING JOINT	2	762mm
10	AWWA C207 CLASS B FLANGE		762mm
11	AWWA CLASS B FLANGE		914mm
12	STUB FLANGE	2	914mm
13	ELECTROFUSE COUPLING	2	914mm (I.D.)
14	81° FRP FABRICATED BEND	2	762mm
15	45° FRP WYE	2	762mm
16	VENT PIPE	2	250mm
17	INSPECTION/CLEANING ACCESS DROP PIPES	2	250mm
18	45° FRP BEND	2	762mm

ITEM	DESCRIPTION	QTY	SIZE
19	STANDARD CITY OF WINNIPEG VALVE BOX STAMPED "S" C/W VALVE BOX MOUNTED POSITION INDICATOR	2	
20	INTERMEDIATE FRP PLATFORM SEE DETAIL "2", DWG. S-4001		
21	250# EXHAUST VENT ASSEMBLY SEE DETAIL "3" DWG. S-4001	2	
22	BLIND FLANGE C/W VENT OUTLET	2	762mm
23	LEAK TEST & DRAIN CONNECTION SEE DETAIL "4", DWG. S-4001	2	50mm
24	600x600x100 SUMP AND GRATING SEE DETAIL "5", DWG. S-4001	1	
25	FILL PORT	2	200mm
26	SAFETY LIFT DAVIT	3	
27	VERTICAL PIPE SUPPORT SEE DETAIL "6", DWG. S-4001	2	
28	VALVE BASE BLOCK. SEE DETAIL "7", DWG. S-4001	2	
29	WALL OPENING C/W LINK SEAL SEE DETAIL "8", DWG. S-4001	2	
30	OFFSET RISER CLAMP (MSS TYPE 4) FASTENED TO FRP SUPPORT STRUCTURE	2	
31	THRUST RING (AS PER MANUFACTURER DESIGN)		



<p>LOCATION APPROVED UNDERGROUND STRUCTURES</p> <p>SUPV. U/G STRUCTURES COMMITTEE DATE</p> <p>NOTE: LOCATION OF UNDERGROUND STRUCTURES AS SHOWN ARE BASED ON THE BEST INFORMATION AVAILABLE BUT NO GUARANTEE IS GIVEN THAT ALL EXISTING UTILITIES ARE SHOWN OR THAT THE GIVEN LOCATIONS ARE EXACT. CONFIRMATION OF EXISTENCE AND EXACT LOCATION OF ALL SERVICES MUST BE OBTAINED FROM THE INDIVIDUAL UTILITIES BEFORE PROCEEDING WITH CONSTRUCTION.</p>	<p>B.M. 263-11 Bishop Grandin Blvd. & the E. bank of the Red River, Tbt. on top of N.W. Cor. of gate chamber which is closest to the most ELEV. 232.525m</p> <p>Sly. bridge of two bridges over Red River on Bishop Grandin Blvd.</p> <p>CONSTRUCTION COMPLETION DATE: YYYY MM DD</p>
---	---

AECOM	
DESIGNED BY	MPG
CHECKED BY	JAT
DRAWN BY	ADL
APPROVED BY	MGM
RELEASED FOR CONSTRUCTION	R. LUCKY
SCALE: HORIZONTAL	1:40
VERTICAL	-
DATE	2025 05 13
PLOT DATE:	2025 05 13
Tender No:	1010-2024B
CONTRACT NUMBER:	

ENGINEER'S SEAL
CONSULTANT DRAWING NUMBER
S-1005

THE CITY OF WINNIPEG
WATER AND WASTE DEPARTMENT
ENGINEERING DIVISION

REPLACEMENT OF THE
FORT GARRY ST VITAL SIPHON
**PROPOSED DOWNSTREAM SIPHON CHAMBER
PLANS & DETAILS**

SHEET **23** OF **32**
CITY DRAWING NUMBER
S-1005

FOR INDEX SEE
G-1001

Certificate of Authorization
AECOM Canada ULC
No. 4671