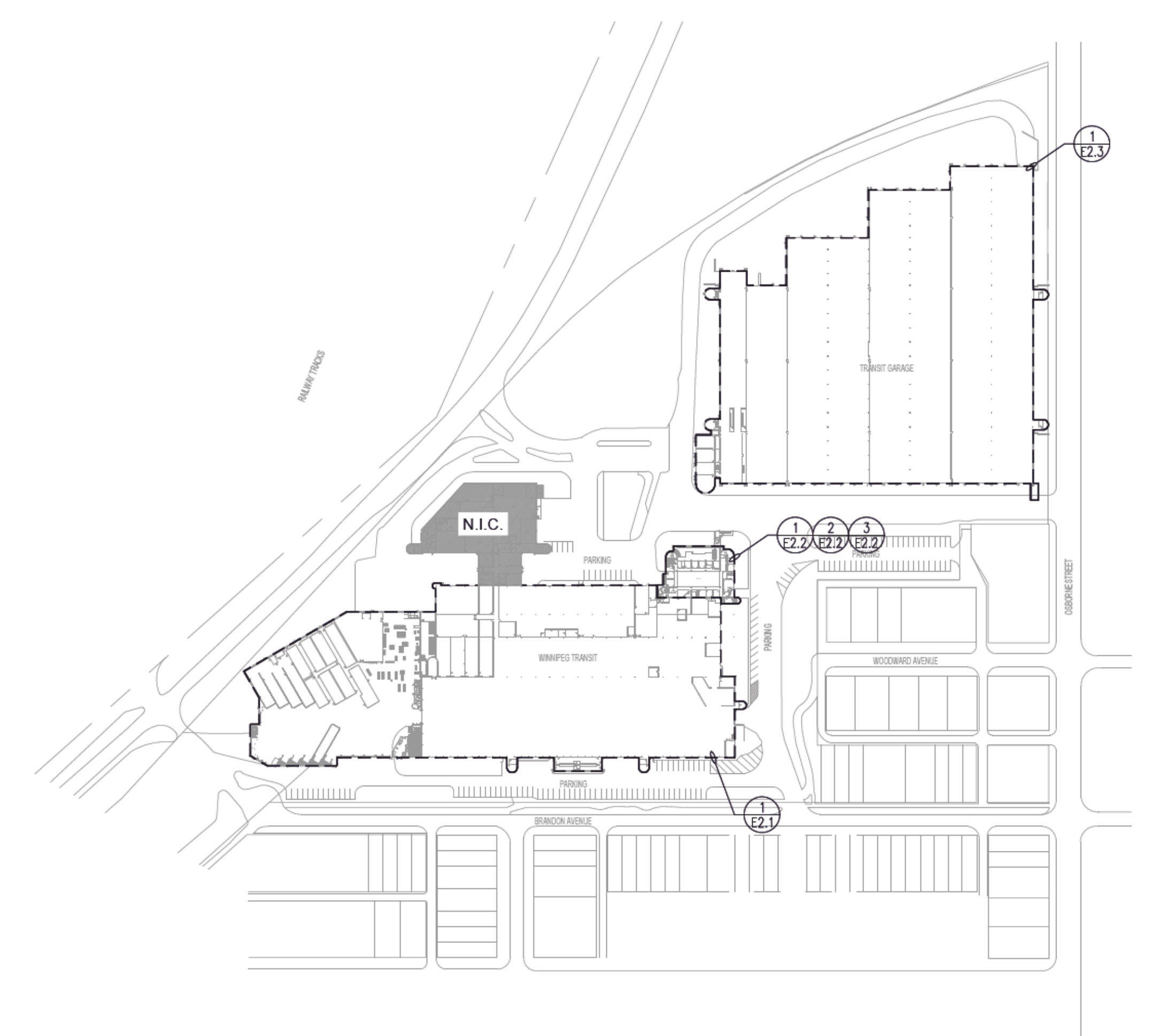
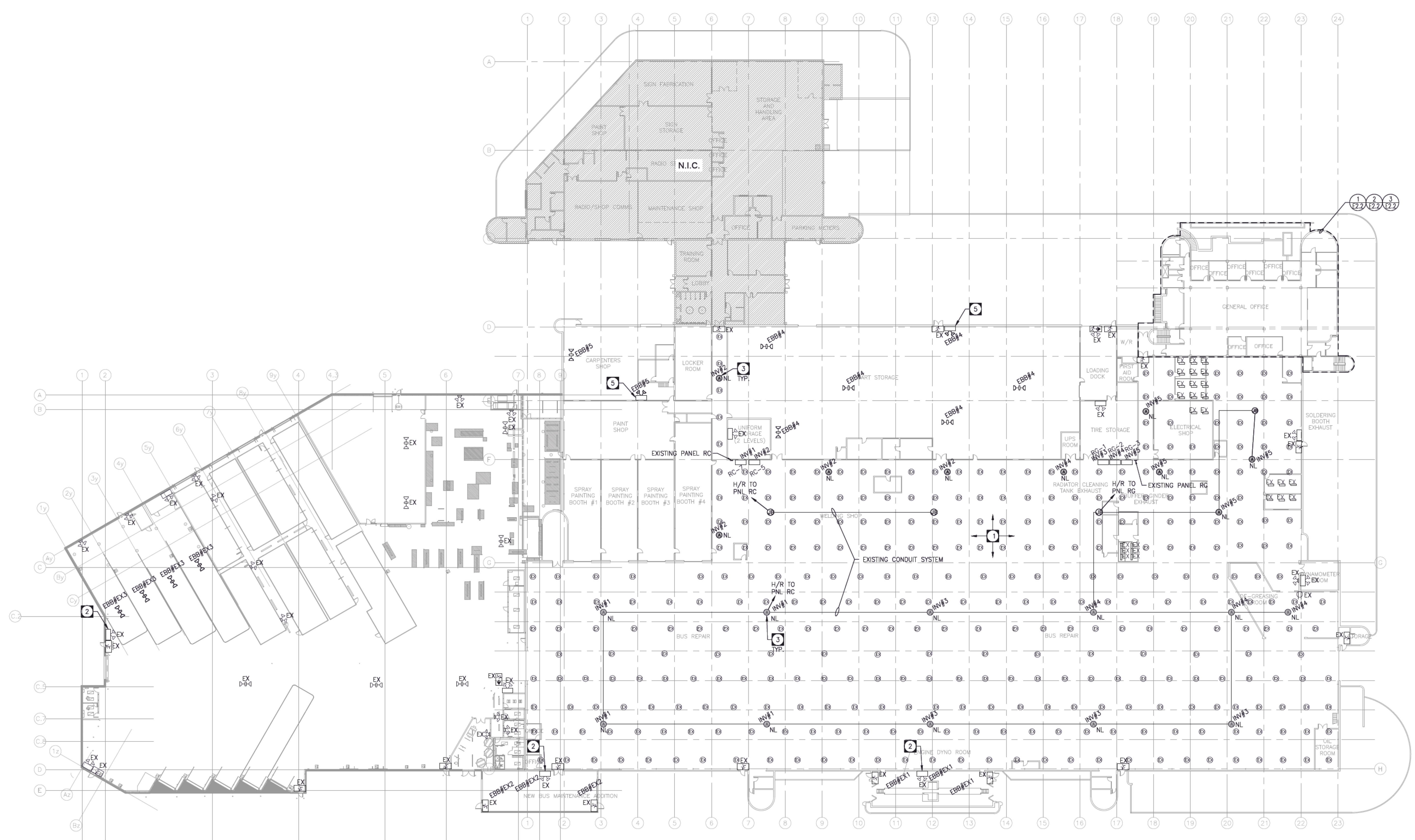


**DRAWING NOTES:**

- 1 REWORK EXISTING CONDUIT FOR NEW NIGHT LIGHTING LAYOUT AS REQUIRED.
- 2 CONFIRM EXISTING BATTERY BANK LOADS AND VOLTAGE BEFORE CONNECTING NEW REMOTE HEADS.
- 3 NEW NIGHT LIGHT FIXTURES SHALL BE ACUTY BRANDS HOLOPHANE PHAZON P/RZ 30L 4K 80CRI 12 PWM
- 4 CONNECT TO EXISTING LIGHTING CIRCUIT, CONFIRM EXISTING LIGHTING CIRCUIT IS UNSWITCHED.
- 5 CONNECT BATTERY BANK TO LOCAL AREA LIGHTING CIRCUIT. 4 CIRCUIT VSR SHALL BE CONNECTED TO MONITOR ALL LIGHTING CIRCUITS IN THE AREA WHERE NEW EMERGENCY LIGHTING IS LOCATED. CONFIRM CIRCUITS TO MONITOR ON SITE.



**SITE KEY PLAN**  
N.T.S.



**BUILDING A - MAIN FLOOR**  
SCALE: 1/16"=1'-0"

0		ISSUED FOR CONSTRUCTION	2021-09-15	JRF
NO.		REVISIONS	DATE	BY
		Project: 191529 towereng.ca Calgary: 403-235-2655 Winnipeg: 204-925-1150		
<small>These design documents are prepared solely for the use by the party with whom the design professional has entered into a contract and there are no representations of any kind made by the design professional to any party with whom the design professional has not entered into a contract. Any use of the drawing, disk or electronic data without the expressed written permission of Tower Engineering Group is strictly prohibited. The contractor is responsible to verify all dimensions with conditions on the site and report discrepancies to Tower Engineering for adjustment. All prints to be returned.</small>				
SEAL	SEAL			
 Certificate of Authorization Tower Engineering Group No 4156				
<b>PROJECT</b> <b>TRANSIT EMERGENCY LIGHTING</b> <b>421 OSBORNE</b> <b>WINNIPEG, MANITOBA</b>				
<b>DRAWING</b> <b>BUILDING A</b> <b>RENOVATION PLAN</b>				
DESIGNED:	JRF	DRAWING NO.	505-2021_DRAWING_E2.1	
DRAWN:	VRR	CHECKED:	SMM	
SCALE:	AS NOTED	REVISION	R0	
PLOT DATE:	2021-09-15	PROJECT NO.:	191529	