

Appendix C

Existing Photographs

Appendix C - Existing Photographs



Photograph 1. ↑
Mile 17.05 – Existing Stop Log Opening and Cover



Photograph 2. ↑
Mile 17.05 – Existing Stop Log Opening and Cover

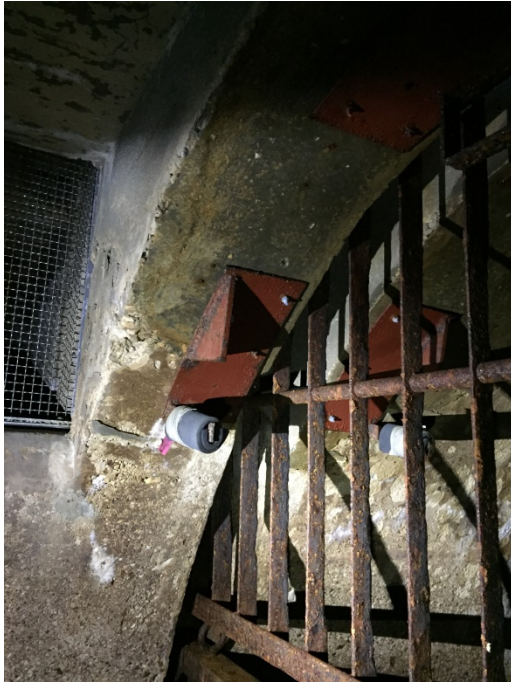


Photograph 3. ↑
Mile 17.05 – Boathouse Interior Wall and Roof



Photograph 4. ↑
Mile 17.05 – Boathouse Interior Wall and Roof

Appendix C - Existing Photographs



Photograph 5. ↑

Mile 17.05 – Existing Groove (Grating to be Removed)



Photograph 6. ↑

Mile 17.05 – Existing Groove (Grating to be Removed)



Photograph 7. ↑

Mile 17.05 – Existing Groove (Grating to be Removed)



Photograph 8. ↑

Mile 17.05 – Existing Groove (Grating to be Removed)

Appendix C - Existing Photographs



Photograph 9. ↑

Mile 64.14 – General Site (Concrete Cover not Shown – To be Removed by City prior to Construction)



Photograph 10. ↑

Mile 64.14 – Existing Groove (Top of Aqueduct)



Photograph 11. ↑

Mile 64.14 – Existing Groove (Side of Aqueduct)



Photograph 12. ↑

Mile 64.14 – Existing Groove (Side of Aqueduct)

Appendix C - Existing Photographs



Photograph 13. ↑

Mile 73.69 – Boathouse Interior and Stop Log Access Cover



Photograph 14. ↑

Mile 73.69 – Boathouse Interior and Stop Log Access Cover



Photograph 15. ↑

Mile 73.69 – Existing Stop Log Opening and Cover



Photograph 16. ↑

Mile 73.69 – Existing Stop Log Opening and Cover

Appendix C - Existing Photographs



Photograph 17. ↑
Mile 73.69 – Existing Groove (Side of Aqueduct)



Photograph 18. ↑
Mile 73.69 – Existing Groove (Top Corner, Below Floor Opening)



Photograph 19. ↑
Mile 73.69 – Existing Groove (Side of Aqueduct)



Photograph 20. ↑
Mile 73.69 – Existing Groove (Side of Aqueduct)