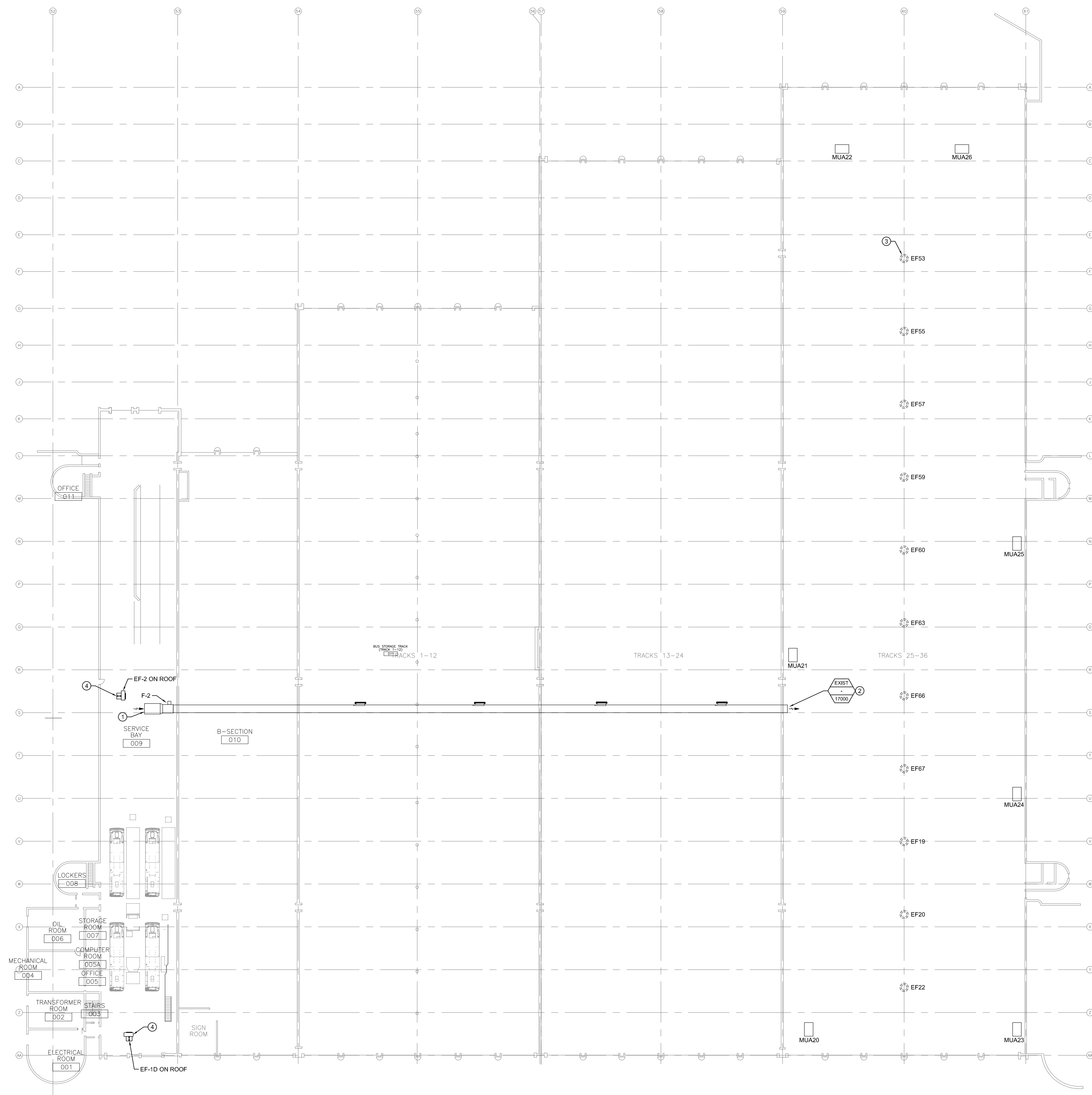
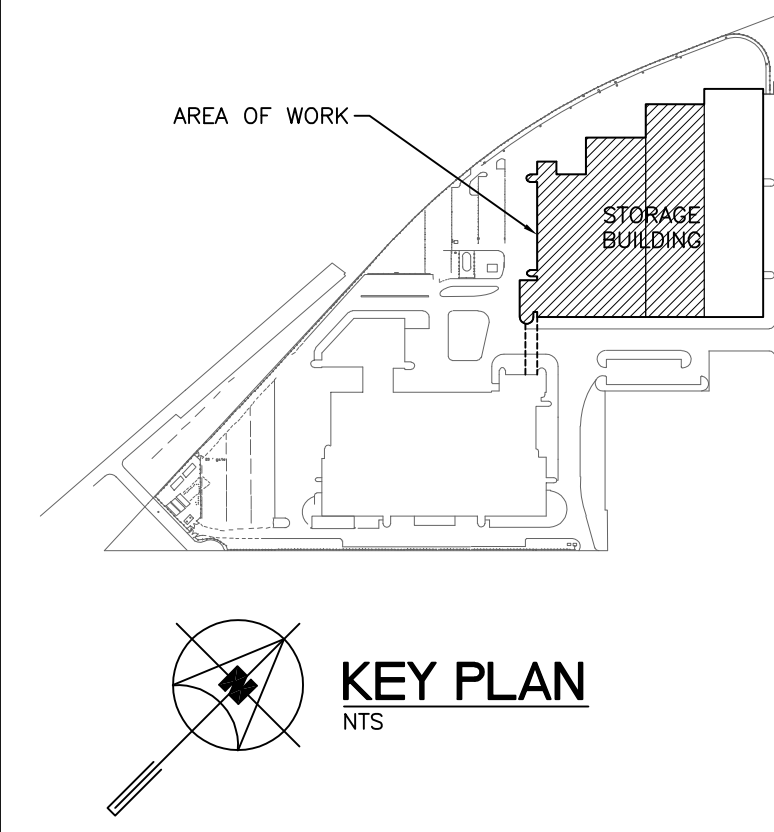


GENERAL NOTES

- A. THIS BUILDING MAY CONTAIN ASBESTOS. REFER TO FRONT END SPECIFICATIONS FOR FURTHER INFORMATION.
- B. REFER TO ROOF DETAILS AND SPECIFICATIONS FOR ALL NEW AND CAPPED OPENINGS.

KEY NOTES

- 1. BALANCE THE EXISTING TRANSFER FAN F-2 TO 1700 CFM. FAN MAY BE BALANCED USING THE EXISTING VFD OR THROUGH THE PULLEY AND BELTS.
- 2. BALANCE THE EXISTING TRANSFER AIR OUTLET TO THE FLOW INDICATED.
- 3. BALANCE THE EXISTING EXHAUST FAN EF-51 TO 5639 CFM.
- 4. REFER TO SPECIFICATION FOR SEQUENCE MODIFICATION OF EF-2 AND EF-10.



1 MAIN FLOOR PLAN - STORAGE TRACKS REBALANCING - VENTILATION
SCALE: 1/32" = 1'-0"

NO.	Description	BY	DATE
1	ISSUED FOR ADDENDUM 3	JH	09/12/18
0	ISSUED FOR CONSTRUCTION	JH	09/11/18

**ENGINEERS
GEOSCIENTISTS**
MANITOBA
Certificate of Authorization
SMS Engineering Ltd.
No. 166

OFFICIAL
CONTRACT DRAWING
BONDED AND SEALED BY
J.T. HOPKOCKS, P. ENG
NOVEMBER 9, 2018

770 Bradford Street
Winnipeg, Canada
T 204 775 0291
SMSeng.com

**SMS
ENGINEERING**

Project Title
**CITY OF WINNIPEG FORT ROUGE
TRANSIT BASE - STORAGE TRACK
13-24 - MECHANICAL UPGRADE**

WINNIPEG MANITOBA

Drawing Title
**MAIN FLOOR PLAN - STORAGE
TRACKS REBALANCING -
VENTILATION**

Drawn By	Checked By	Approved By
JC/AS	XZ	JH
Scale	Date	Project No.
AS NOTED	NOVEMBER, 2018	18-246-01
Revision Number	Drawing Number	Sheet Order
1	M2.7	12 OF 12