

EXISTING ABUTMENT / APPROACH PLAN

1:75

LEGEND:

- EXISTING CONCRETE TO BE REMOVED
- FULL DEPTH SUPERSTRUCTURE REMOVAL TO ISOLATE STAGE 1 & STAGE 2 WORKS



DESIGNED BY	DRA	CHECKED BY	SSR
DRAWN BY	NBG	APPROVED BY	MBL
HOR. SCALE	AS SHOWN	RELEASED FOR CONSTRUCTION	
VERTICAL	AS SHOWN		
0 ISSUED FOR TENDER	18/02/09	DRA	
NO. REVISIONS	DATE	BY	DATE

DESIGNED BY	DRA	CHECKED BY	SSR
DRAWN BY	NBG	APPROVED BY	MBL
HOR. SCALE	AS SHOWN	RELEASED FOR CONSTRUCTION	
VERTICAL	AS SHOWN		
0 ISSUED FOR TENDER	18/02/09	DRA	
NO. REVISIONS	DATE	BY	DATE

ENGINEER'S SEAL	PROVINCE OF MANITOBA
D.R.C. AMORIM	Member 33215
CONSULTANT PROJECT NUMBER	17-5932

THE CITY OF WINNIPEG PUBLIC WORKS DEPARTMENT	CITY DRAWING NUMBER B-118-2017-CS-015
FERMOR AVENUE BRIDGE OVER SEINE RIVER BRIDGE REHABILITATION, PEDESTRIAN-CYCLIST UNDERPASS STRUCTURE AND ROADWORKS FROM ST. ANNE'S ROAD TO ARCHIBALD STREET	SHEET 015 OF 100
EXISTING ABUTMENT AND APPROACH SLAB REMOVALS 1 OF 2	CONSULTANT DRAWING NUMBER CS - 015

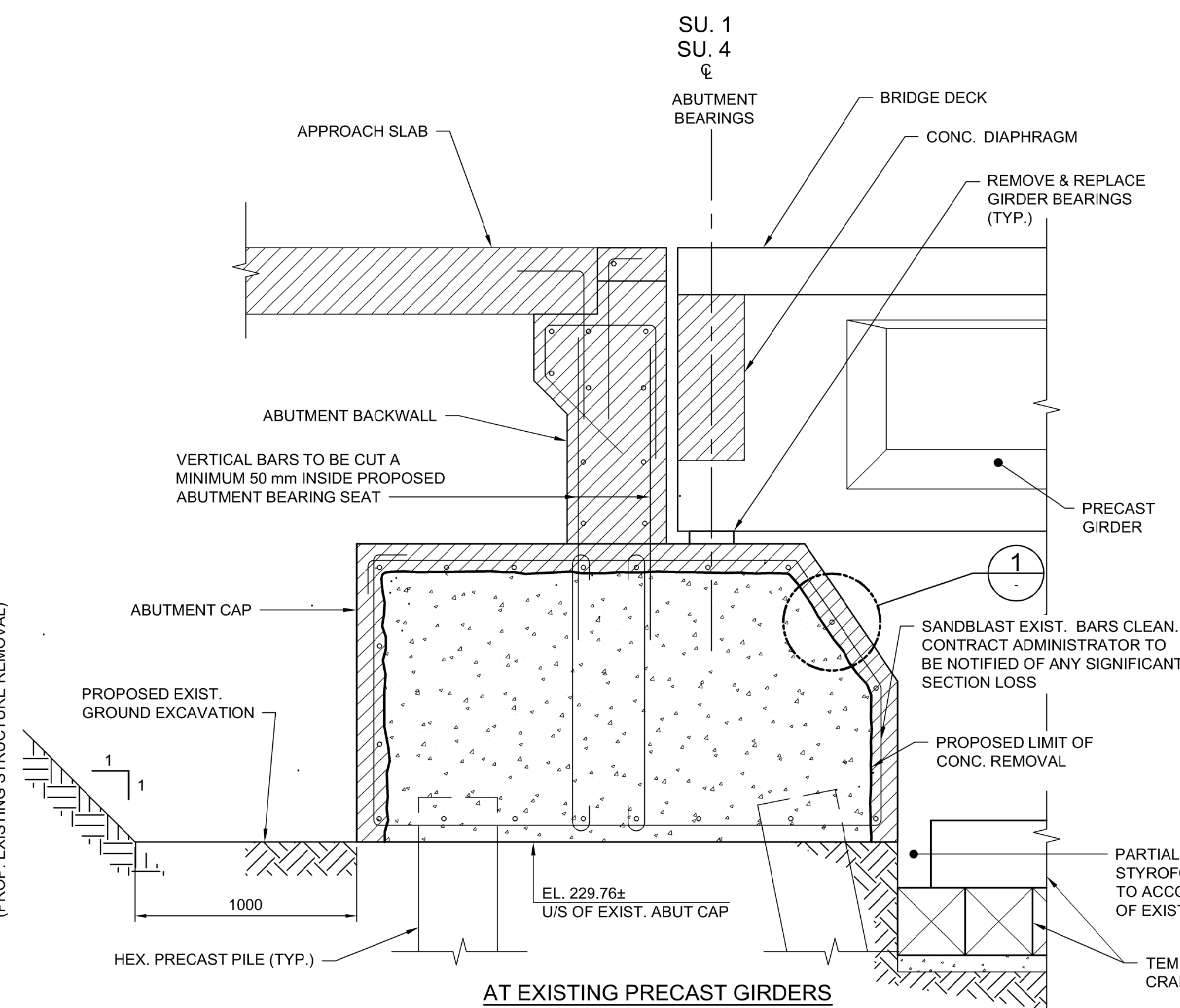
NOTES:

SEQUENCE OF WORK:

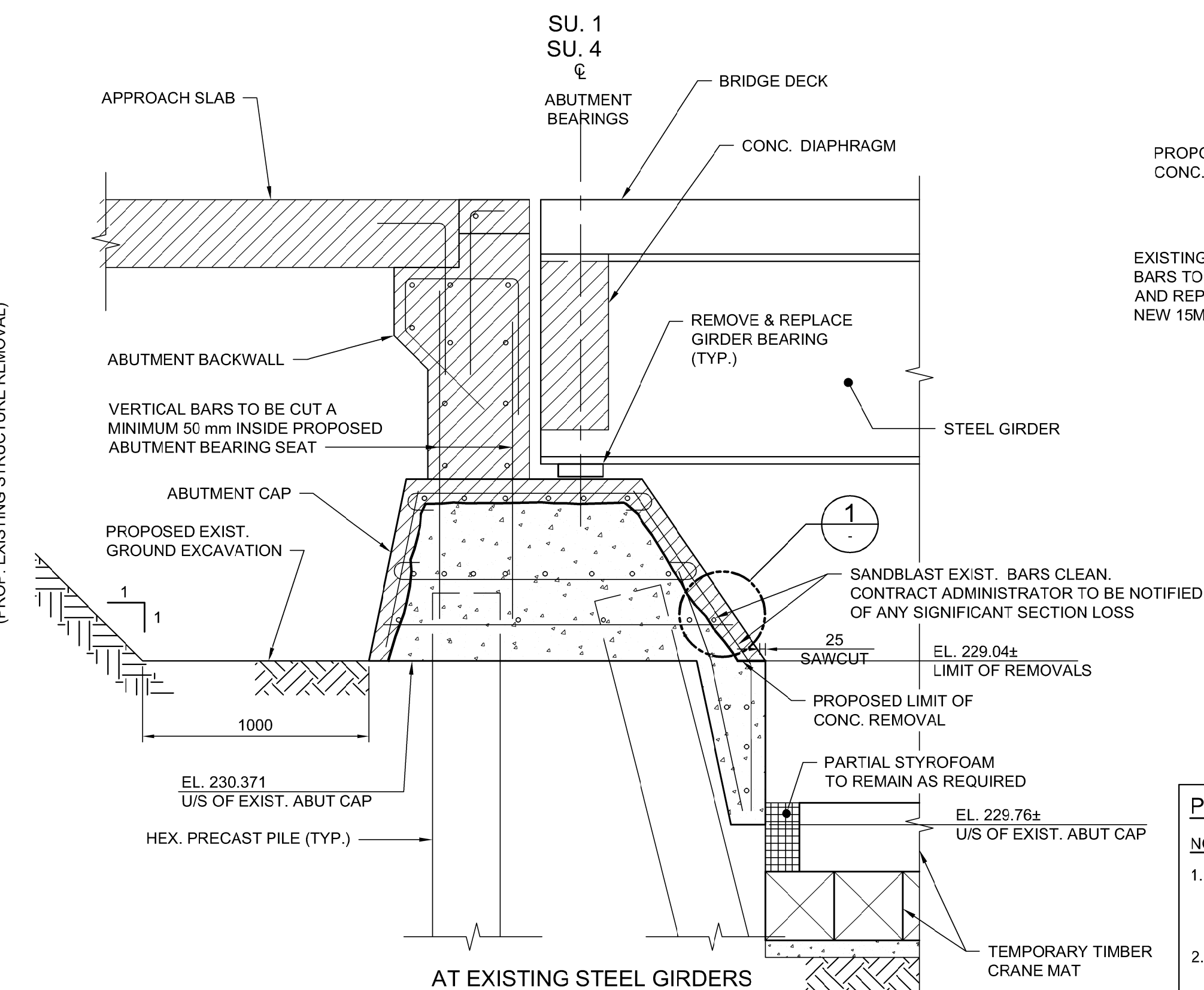
- ISOLATE STAGE 1 FROM STAGE 2 WORKS WITH FULL DEPTH SUPERSTRUCTURE REMOVAL (SEE SHEET CS-034 FOR DETAILS)
- REMOVE CONCRETE OVERHANG
- REMOVE APPROACH SLAB
- EXCAVATE AS SHOWN TO EXPOSE BACKSIDE OF ABUTMENT
- REMOVE ABUTMENT BACKWALL AND WINGWALL. CAUTION: TEMPORARY SUPPORT OF BELL MTS DUCTS REQUIRED
- JACK SUPERSTRUCTURE (SEE SHEET CS-014 FOR DETAILS).
- COMPLETE ABUTMENT REPAIRS AND INSTALL NEW BEARINGS
- LOWER SUPERSTRUCTURE ONTO REHABILITATED ABUTMENT

REMOVALS:

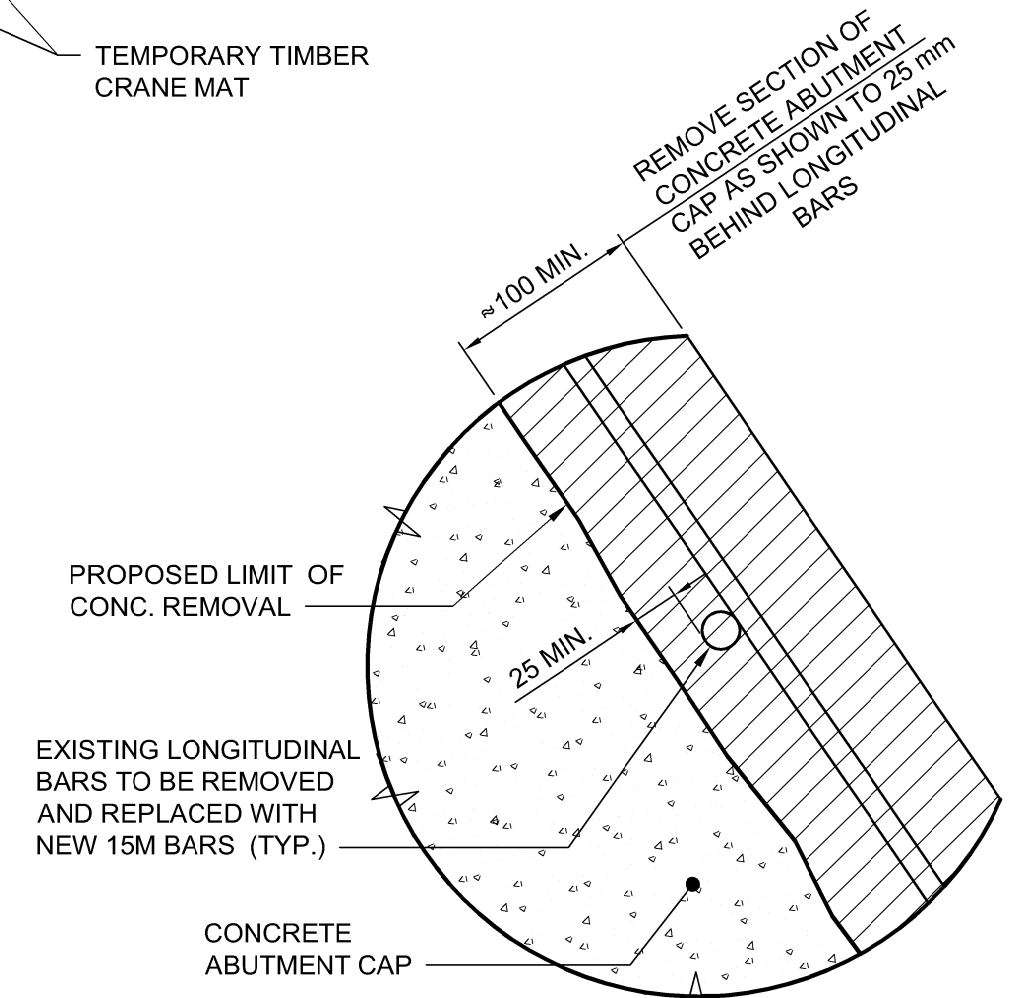
- CONCRETE SHALL BE REMOVED TO THE LIMITS SHOWN ON THE DRAWINGS USING JACK-HAMMERS (14 kg CLASS), CHIPPING HAMMERS (7 kg CLASS), OR OTHER MEANS ACCEPTABLE TO THE CONTRACT ADMINISTRATOR TO ACHIEVE A MINIMUM SURFACE PROFILE OF CSP 7 IN ACCORDANCE WITH ICRI GUIDELINE 310.2.
- THE CONCRETE SUBSTRATE SHALL BE SUBSEQUENTLY CLEANED USING OIL-FREE ABRASIVE BLASTING OR HIGH-PRESSURE WATER BLASTING PRIOR TO INSTALLING THE NEW DAS ANODES.
- THE CONTRACTOR SHALL ENSURE THAT ALL WASTE AND DEBRIS FROM THE ABUTMENT WORKS IS CONTAINED AND NOT ALLOWED TO ENTER THE WATERWAY.



SECTION A  
1:20



SECTION B  
1:20



EXISTING CONCRETE REMOVAL

DETAIL 1  
1:5

PIER SURFACE REPAIRS

NOTES:

- THE CONTRACT ADMINISTRATOR WILL IDENTIFY AREAS ON THE EXISTING PIER FACES ON SITE REQUIRING CONCRETE SURFACE REPAIRS.
- REPAIRS SHALL BE COMPLETED IN A SIMILAR MANNER TO THE ABUTMENT CAP REFACING SHOWN ON THIS DRAWING INCLUDING SAWCUT EDGES, CONCRETE REMOVAL TO A MINIMUM 25mm BEHIND EXISTING REINFORCEMENT, PREPARATION OF THE CONCRETE SUBSTRATE AND CASTING OF SCC.