

APPENDIX 'A'

PAVEMENT TESTHOLE REPORT

APPENDIX 'A' – PAVEMENT TESTHOLE REPORT

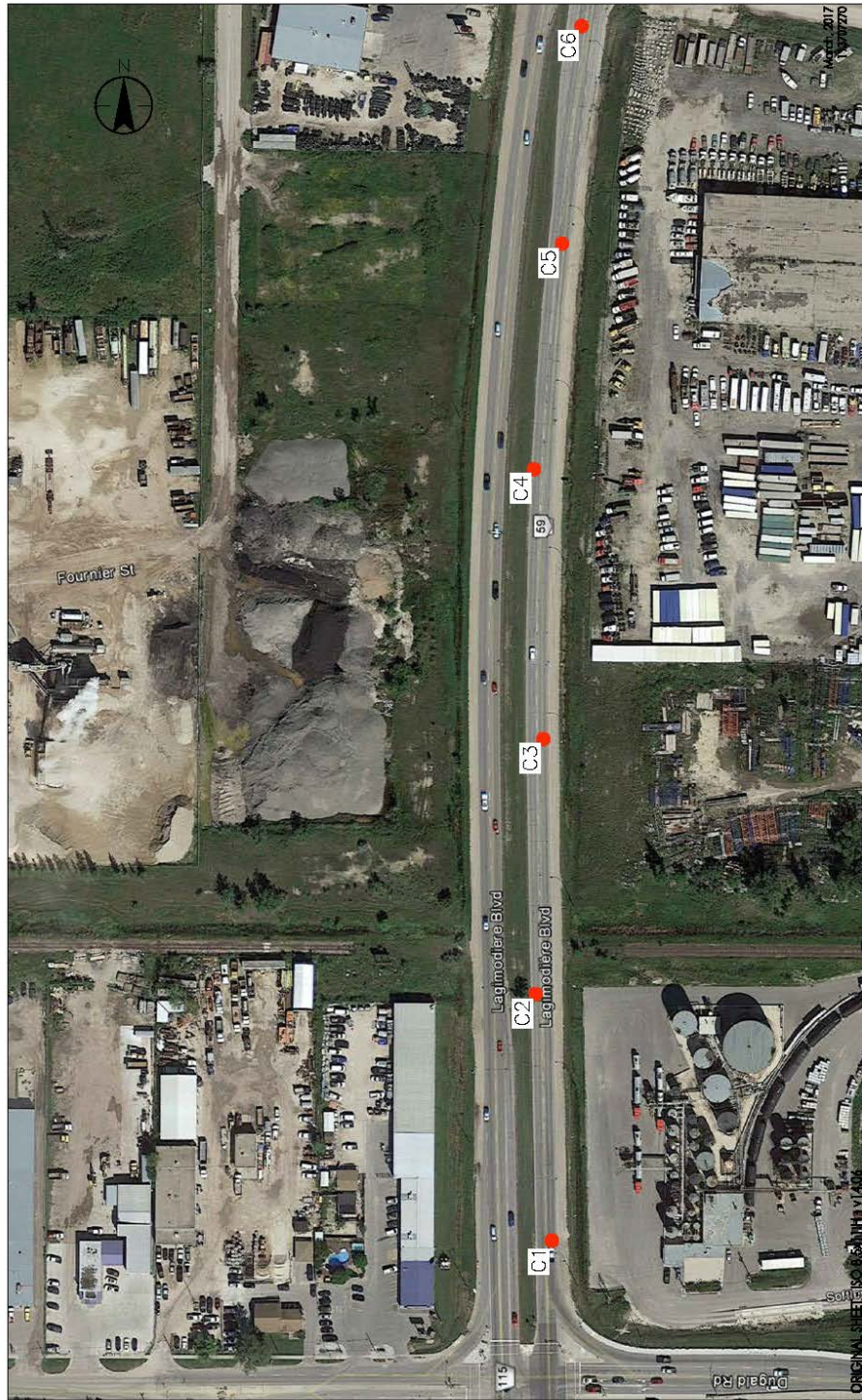
TABLE OF CONTENTS

PAVEMENT TESTHOLE REPORT FOR LAGIMODIERE BOULEVARD	1
Pavement Core Locations	1
Summary of Core Samples	4
Pavement Core Photos	5
PAVEMENT TESTHOLE REPORT FOR NESS AVENUE	9
Pavement Core Locations	9
Summary of Core Samples	10
Pavement Core Photos	11
PAVEMENT TESTHOLE REPORT FOR MCPHILLIPS STREET NORTHBOUND	13
Pavement Core Locations	13
Summary of Core Samples	14
Pavement Core Photos	15
PAVEMENT TESTHOLE REPORT FOR MCPHILLIPS STREET SOUTHBOUND	16
Pavement Core Locations	16
Summary of Core Samples	17
Pavement Core Photos	18
PAVEMENT TESTHOLE REPORT FOR BROADWAY	19
Pavement Core Locations	19
Summary of Core Samples	20
Pavement Core Photos	22
PAVEMENT TESTHOLE REPORT FOR PROVENCHER BOULEVARD	27
Pavement Core Locations	27
Summary of Core Samples	28
Pavement Core Photos	29


The pavement testhole report is provided to demonstrate average pavement conditions that will be encountered during construction of the project.

Pavement Testhole Report for Lagimodiere Boulevard

Pavement Core Locations



V:\1233\active\113\0720\500\drawings\0720.mll\stnhec\lagimodiere_1
2017/04/26 1:51 PM By: Bun, Solihed



Stantec
Stantec Consulting Ltd.
Suite 500, 311 Portage Avenue
Winnipeg MB Canada R3B 2B9
Tel. 204.489.5900 Fax. 204.453.9012
www.stantec.com

Legend

● ASPHALT CORE

Notes

IMAGE SOURCE:
GOOGLE EARTH

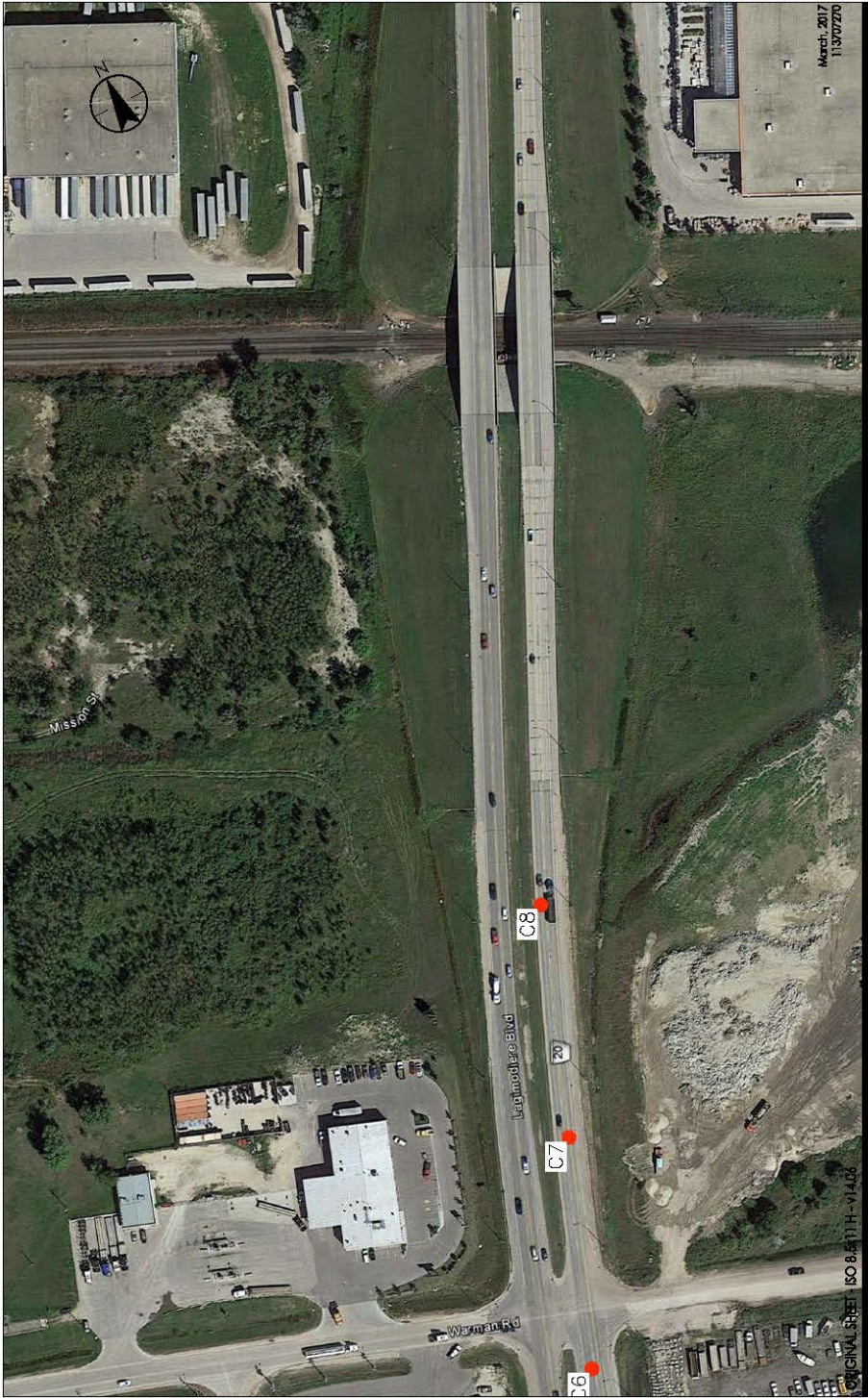
Client/Project

CITY OF WINNIPEG
LAGIMODIERE BLVD. FROM DUGALD RD. TO REGENT AVE.
WINNIPEG, MB

Figure No. 1

Title

CORING LOCATION PLAN
LAGIMODIERE BOULEVARD



V:\1253\active\11370270\500\dwg\hgh\02720.mtl\stms.dwg LAGIMODIERE 2
2017/04/26 1:51 PM By: Bun. Soltero

Client/Project

CITY OF WINNIPEG
LAGIMODIERE BLVD. FROM DUGALD RD. TO REGENT AVE.
WINNIPEG, MB

Figure No.

2

Title

CORING LOCATION PLAN
LAGIMODIERE BOULEVARD

Legend

● ASPHALT CORE

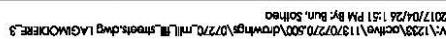
Notes

IMAGE SOURCE: GOOGLE EARTH



Stantec Consulting Ltd.

Suite 500, 311 Portage Avenue
Winnipeg MB Canada R3B 2B9
Tel. 204.489.5900 Fax. 204.453.9012
www.stantec.com



Client/Project	CITY OF WINNIPEG LAGIMODIERE BLVD. FROM DUGALD RD. TO REGENT AVE. WINNIPEG, MB
Figure No.	3
Title	CORING LOCATION PLAN LAGIMODIERE BOULEVARD

Summary of Core Samples



TABLE 1
PAVEMENT CORE SUMMARY
LAGIMODIÈRE BOULEVARD FROM DUGALD ROAD TO REGENT AVENUE

Core No.	Core Location	Pavement Structure Thickness (mm)		
		Asphalt	Concrete	Total
C1	Lagimodière Boulevard 47.5 m North of Northeast corner of Lagimodière Boulevard and Dugald Road 1.8 m West from East curb	85	N/A	85
C2	Lagimodière Boulevard 144.0 m North of Northeast corner of Lagimodière Boulevard and Dugald Road 6.0 m West from East curb	125	N/A	125
C3	Lagimodière Boulevard 239.0 m North of Northeast corner of Lagimodière Boulevard and Dugald Road 1.8 m West from East curb	70	N/A	70
C4	Lagimodière Boulevard 339.0 m North of Northeast corner of Lagimodière Boulevard and Dugald Road 6.0 m West from East curb	80	N/A	80
C5	Lagimodière Boulevard 95.0 m South of Southeast corner of Lagimodière Boulevard and Warman Road 1.8 m West from East curb	75	N/A	75
C6	Lagimodière Boulevard 11.0 m South of Southeast corner of Lagimodière Boulevard and Warman Road 6.0 m West from East curb	80	N/A	80
C7	Lagimodière Boulevard 60.0 m North of Northeast corner of Lagimodière Boulevard and Warman Road 1.8 m North from South curb	130	N/A	130
C8	Lagimodière Boulevard 149.0 m North of Northeast corner of Lagimodière Boulevard and Warman Road 6.0 m North from South curb	75	N/A	75
C9	Lagimodière Boulevard 326.0 m South of Southeast corner of Lagimodière Boulevard and Regent Avenue 1.8 m West from East curb	40	N/A	40
C10	Lagimodière Boulevard 242.0 m South of Southeast corner of Lagimodière Boulevard and Regent Avenue 1.8 m West from East curb	100	N/A	100
C11	Lagimodière Boulevard 154.0 m South of Southeast corner of Lagimodière Boulevard and Regent Avenue 1.8 m West from East curb	80	N/A	80
C12	Lagimodière Boulevard 82.0 m South of Southeast corner of Lagimodière Boulevard and Regent Avenue 17.5 m West from East curb	90	N/A	90
C13	Lagimodière Boulevard 82.0 m South of Southeast corner of Lagimodière Boulevard and Regent Avenue 14.0 m West from East curb	70	N/A	70
C14	Lagimodière Boulevard 82.0 m South of Southeast corner of Lagimodière Boulevard and Regent Avenue 10.5 m West from East curb	90	N/A	90
C15	Lagimodière Boulevard 82.0 m South of Southeast corner of Lagimodière Boulevard and Regent Avenue 2.0 m West from East curb	85	N/A	85

Note: Asphalt cores only.

Pavement Core Photos



Photo 1 – Core 1



Photo 2 – Core 2



Photo 3 – Core 3



Photo 4 – Core 4



Photo 5 – Core 5



Photo 6 – Core 6



Photo 7 – Core 7



Photo 8 – Core 8



Photo 9 – Core 9



Photo 10 – Core 10



Photo 11 – Core 11



Photo 12 – Core 12



Photo 13 – Core 13



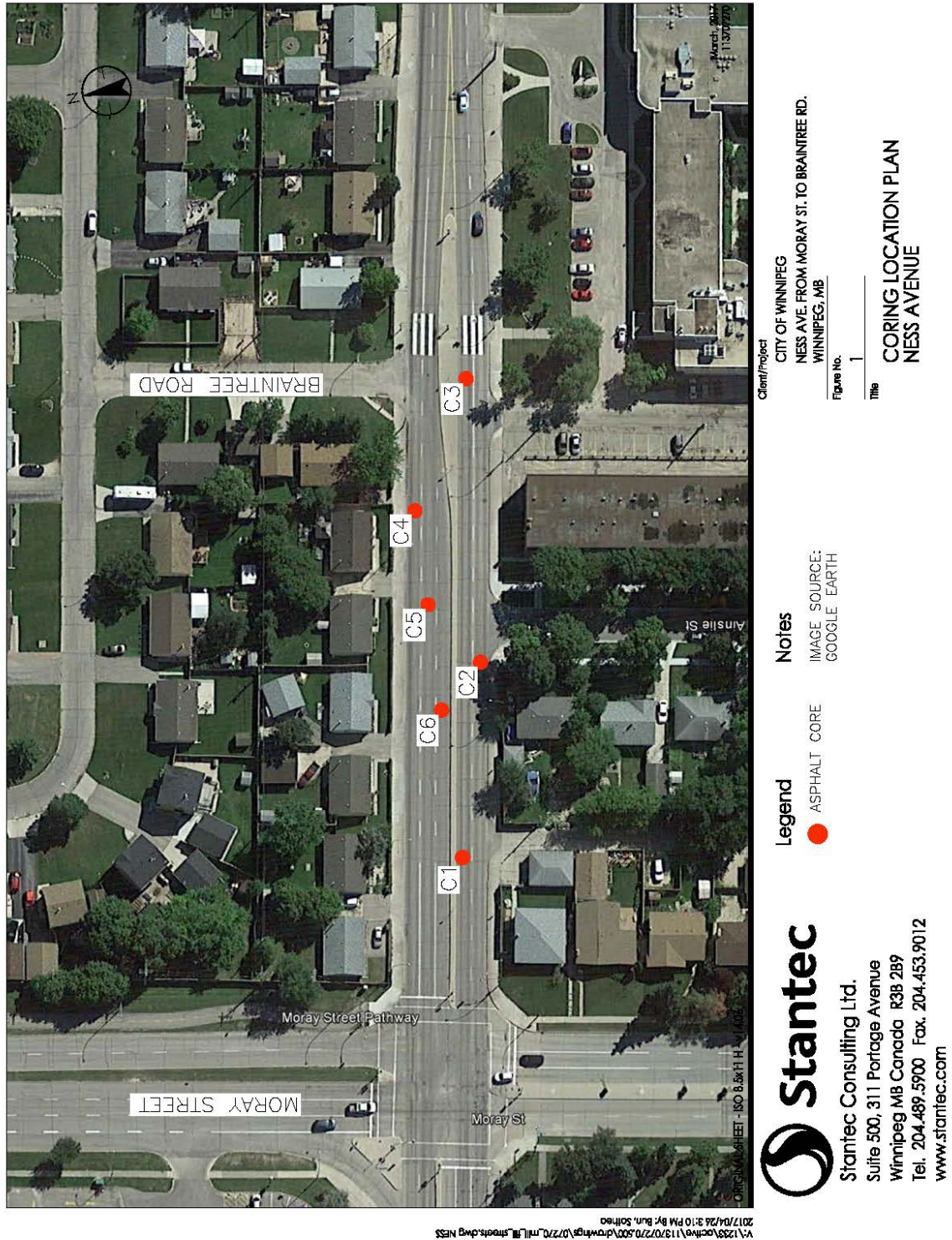
Photo 14 – Core 14



Photo 15 – Core 15

Pavement Testhole Report for Ness Avenue

Pavement Core Locations



Summary of Core Samples



TABLE 1
PAVEMENT CORE SUMMARY
NESS AVENUE FROM MORAY STREET TO BRAINTREE ROAD

Core No.	Core Location	Pavement Structure Thickness (mm)		
		Asphalt	Concrete	Total
C1	Ness Avenue 36.0 m East of Southeast corner of Ness Avenue and Moray Street 5.0 m North from South curb	130	N/A	130
C2	Ness Avenue 80.0 m East of Southeast corner of Ness Avenue and Moray Street 1.6 m North from South curb	75	N/A	75
C3	Ness Avenue 50.5 m East of Southeast corner of Ness Avenue and Moray Street 5.0 m North from South curb	150	N/A	150
C4	Ness Avenue 29.0 m West of Northwest corner of Braintree Road and Ness Avenue 1.6 m South from North curb	130	N/A	130
C5	Ness Avenue 51.0 m West of Northwest corner of Braintree Road and Ness Avenue 5.2 m South from North curb	245	N/A	245
C6	Ness Avenue 70.0 West of Northwest corner of Braintree Road and Ness Avenue 8.5 m South from North curb	110	N/A	110

Note: Asphalt cores only.

Pavement Core Photos



Photo 1 – Core 1



Photo 2 – Core 2



Photo 3 – Core 3



Photo 4 – Core 4



Photo 5 – Core 5



Photo 6 – Core 6

Pavement Testhole Report for McPhillips Street Northbound

Pavement Core Locations



V:\1235\active\119707270\500\drawings\07270.mtl\18 Streets.dwg McPhillips St
2017/04/26 2:27 PM By: Bun, Sothea



Stantec
Stantec Consulting Ltd.
Suite 500, 311 Portage Avenue
Winnipeg MB Canada R3B 2B9
Tel. 204.489.5900 Fax. 204.453.9012
www.stantec.com

Legend

● ASPHALT CORE

Notes

IMAGE SOURCE:
GOOGLE EARTH

Client/Project

CITY OF WINNIPEG
MCPHILLIPS ST. FROM REDWOOD AVE. TO COLLEGE AVE.
WINNIPEG, MB

Figure No.
1

Title

CORING LOCATION PLAN
MCPHILLIPS ST. NORTHBOUND

Summary of Core Samples



TABLE 1
PAVEMENT CORE SUMMARY
McPHILLIPS STREET FROM REDWOOD AVENUE TO COLLEGE AVENUE

Core No.	Core Location	Pavement Structure Thickness (mm)		
		Asphalt	Concrete	Total
C1	McPhillips Street (Northbound) 13.5 m South of Southeast corner of McPhillips Street and Boyd Avenue 1.0 m West from East curb	120	N/A	120
C2	McPhillips Street (Northbound) 43.5 m North of Northeast corner of McPhillips Street and Boyd Avenue 4.5 m West from East curb	85	N/A	85
C3	McPhillips Street (Northbound) 12.0 m North of Northeast corner of McPhillips Street and College Avenue 8.5 m West from East curb	190	N/A	190
C4	McPhillips Street (Northbound) 68.0 m North of Northeast corner of McPhillips Street and College Avenue 11.0 m West from East curb	130	N/A	130

Note: Asphalt cores only.

Pavement Core Photos



Photo 1 – Core 1



Photo 2 – Core 2



Photo 3 – Core 3



Photo 4 – Core 4

Pavement Testhole Report for McPhillips Street Southbound

Pavement Core Locations



Client/Project
CITY OF WINNIPEG
MCPHILLIPS ST. FROM MOUNTAIN AVE. TO REDWOOD AVE.
WINNIPEG, MB

Figure No.
1

Title
CORING LOCATION PLAN
MCPHILLIPS ST. SOUTHBOUND

Notes
IMAGE SOURCE:
GOOGLE EARTH

Legend
● ASPHALT CORE

Stantec
Stantec Consulting Ltd.
Suite 500, 311 Portage Avenue
Winnipeg MB Canada R3B 2B9
Tel. 204.489.5900 Fax. 204.453.9012
www.stantec.com

Summary of Core Samples



TABLE 1
PAVEMENT CORE SUMMARY
McPHILLIPS STREET FROM MOUNTAIN AVENUE TO REDWOOD AVENUE

Core No.	Core Location	Pavement Structure Thickness (mm)		
		Asphalt	Concrete	Total
C1	McPhillips Street (Southbound) 28.5 m North of Northwest corner of McPhillips Street and College Avenue 1.6 m East from West curb	90	N/A	90
C2	McPhillips Street (Southbound) 10.0 m South of Southwest corner of McPhillips Street and College Avenue 4.7 m East from West curb	90	N/A	90
C3	McPhillips Street (Southbound) 8.0 m North of Northwest corner of McPhillips Street and Boyd Avenue 10.5 m East from West curb	150	N/A	150

Note: Asphalt cores only.

Pavement Core Photos



Photo 1 – Core 1



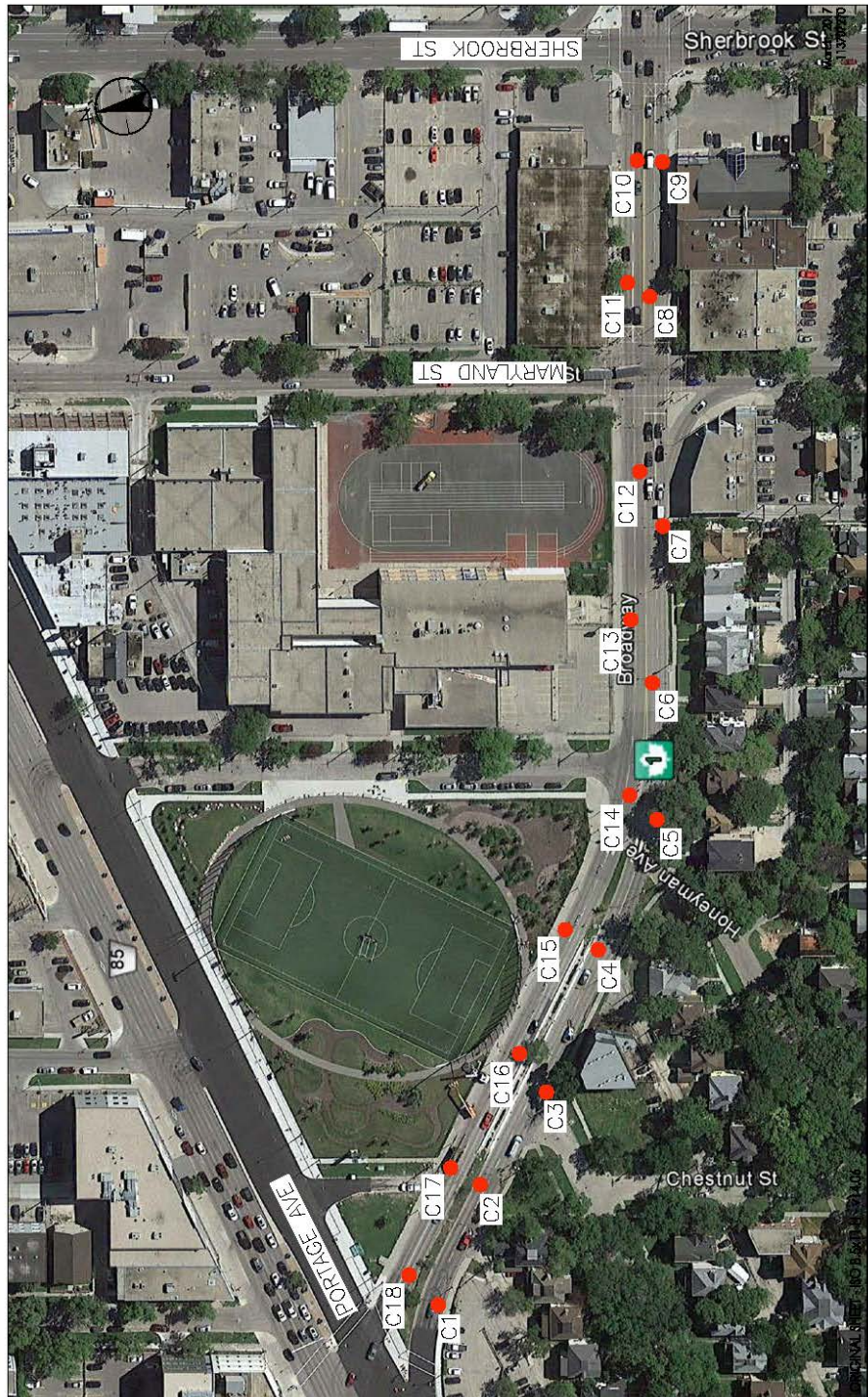
Photo 2 – Core 2



Photo 3 – Core 3

Pavement Testhole Report for Broadway

Pavement Core Locations



V:\1233\loc\hwa\113707270.500\drawings\07270.mxd Streets.dwg BROADWAY
 2017/04/26 1:38 PM By: Bun. Solheid

Client/Project
 CITY OF WINNIPEG
 BROADWAY FROM SHERBROOK ST TO PORTAGE AVE
 WINNIPEG, MB

Figure No.
 1

Title
 CORING LOCATION PLAN
 BROADWAY

Notes
 IMAGE SOURCE:
 GOOGLE EARTH

Legend
 ● ASPHALT CORE

Stantec
 Stantec Consulting Ltd.
 Suite 500, 311 Portage Avenue
 Winnipeg MB Canada R3B 2B9
 Tel. 204.489.5900 Fax. 204.453.9012
www.stantec.com

Summary of Core Samples



TABLE 1
PAVEMENT CORE SUMMARY
BROADWAY FROM PORTAGE AVENUE TO SHERBROOK STREET

Core No.	Core Location	Pavement Structure Thickness (mm)		
		Asphalt	Concrete	Total
C1	Broadway 63.0 m West of Southwest corner of Broadway and Picardi Place 1.6 m North from South curb	30	N/A	30
C2	Broadway 22.0 m West of Southwest corner of Broadway and Picardi Place 5.5 m North from South curb	50	N/A	50
C3	Broadway 0.1 m West of Southeast corner of Broadway and Picardi Place 1.6 m North from South curb	75	N/A	75
C4	Broadway 50.0 m East of Southeast corner of Broadway and Picardi Place 5.5 m North from South curb	40	N/A	40
C5	Broadway 11.5 m East of Southeast corner of Broadway and Honeyman Avenue 1.6 m North from South curb	85	N/A	85
C6	Broadway 88.5 m West of Southwest corner of Broadway and Maryland Street 5.5 m North from South curb	50	N/A	50
C7	Broadway 44.0 m West of Southwest corner of Broadway and Maryland Street 1.6 m North from South curb	65	N/A	65
C8	Broadway 10.0 m East of Southeast corner of Broadway and Maryland Street 5.5 m North from South curb	100	N/A	100
C9	Broadway 30.5 m West of Southwest corner of Broadway and Sherbrook Street 1.6 m North from South curb	45	N/A	45
C10	Broadway 30.0 m West of Northwest corner of Broadway and Sherbrook Street 5.5 m South from North curb	80	N/A	80
C11	Broadway 22.0 m West of Northeast corner of Broadway and Maryland Street 1.6 m South from North curb	105	N/A	105
C12	Broadway 24.0 m West of Northwest corner of Broadway and Maryland Street 5.5 m South from North curb	50	N/A	50
C13	Broadway 46.0 m West of Northwest corner of Broadway and Maryland Street 1.5 m South from North curb	55	N/A	55
C14	Broadway 5.0 m West of Northwest corner of Broadway and Borrowman Place 5.5 m South from North curb	95	N/A	95
C15	Broadway 49.0 m West of Northwest corner of Broadway and Borrowman Place 1.5 m South from North curb	55	N/A	55



TABLE 1
PAVEMENT CORE SUMMARY
BROADWAY FROM PORTAGE AVENUE TO SHERBROOK STREET

Core No.	Core Location	Pavement Structure Thickness (mm)		
		Asphalt	Concrete	Total
C16	Broadway 92.5 m East of Northeast corner of Broadway and Portage Avenue 5.5 m South from North curb	65	N/A	65
C17	Broadway 49.0 m East of Northeast corner of Broadway and Portage Avenue 1.5 m South from North curb	90	N/A	90
C18	Broadway 13.5 m East of Northeast corner of Broadway and Portage Avenue 5.5 m South from North curb	45	N/A	45

Note: Asphalt cores only.

Pavement Core Photos



Photo 1 – Core 1



Photo 2 – Core 2



Photo 3 – Core 3



Photo 4 – Core 4



Photo 5 – Core 5



Photo 6 – Core 6



Photo 7 – Core 7



Photo 8 – Core 8



Photo 9 – Core 9



Photo 10 – Core 10



Photo 11 – Core 11



Photo 12 – Core 12



Photo 13 – Core 13



Photo 14 – Core 14



Photo 15 – Core 15



Photo 16 – Core 16



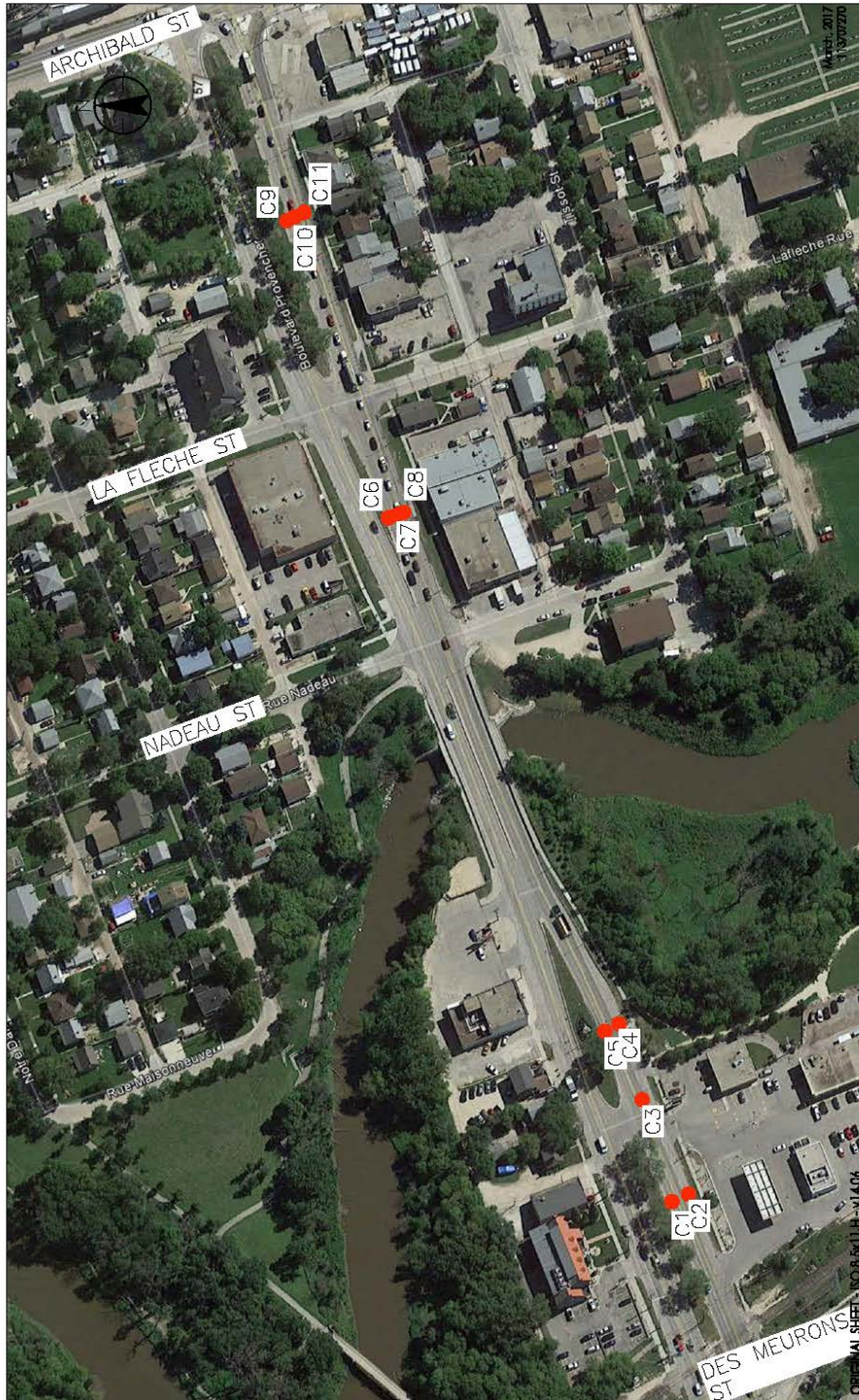
Photo 17 – Core 17



Photo 18 – Core 18

Pavement Testhole Report for Provencher Boulevard

Pavement Core Locations



Client/Project
CITY OF WINNIPEG
PROVENCHE BLVD. FROM REX TO ARCHIBALD ST.
WINNIPEG, MB

Figure No.
1

Title
CORING LOCATION PLAN
PROVENCHE BOULEVARD

Notes
IMAGE SOURCE:
GOOGLE EARTH

Legend
FULL PAVEMENT
CORE

Stantec
Stantec Consulting Ltd.
Suite 500, 311 Portage Avenue
Winnipeg MB Canada R3B 2B9
Tel. 204.489.5900 Fax. 204.453.9012
www.stantec.com

Summary of Core Samples



TABLE 1
PAVEMENT CORE SUMMARY
PROVENCHER BOULEVARD FROM RRX TO ARCHIBALD STREET

Core No.	Core Location	Pavement Structure Thickness (mm)		
		Asphalt	Concrete	Total
C1	Provencher Boulevard 73.0 m East of Southeast corner of Provencher Boulevard and Des Meurons Street 8.5 m North from South curb	75	165	240
C2	Provencher Boulevard 73.0 m East of Southeast corner of Provencher Boulevard and Des Meurons Street 1.6 m North from South curb	70	180	250
C3	Provencher Boulevard 115.0 m East of Southeast corner of Provencher Boulevard and Des Meurons Street 5.0 m North from South curb	65	185	250
C4	Provencher Boulevard 143.0 m East of Southeast corner of Provencher Boulevard and Des Meurons Street 1.6 m North from South curb	75	175	250
C5	Provencher Boulevard 143.0 m East of Southeast corner of Provencher Boulevard and Des Meurons Street 8.5 m North from South curb	85	170	255
C6	Provencher Boulevard 50.0 m East of Southeast corner of Provencher Boulevard and Rue Nadeau 8.5 m North from South curb	55	160	215
C7	Provencher Boulevard 50.0 m East of Southeast corner of Provencher Boulevard and Rue Nadeau 5.0 m North from South curb	50	195	245
C8	Provencher Boulevard 50.0 m East of Southeast corner of Provencher Boulevard and Rue Nadeau 1.6 m North from South curb	65	165	230
C9	Provencher Boulevard 75.5 m East of Southeast corner of Provencher Boulevard and La Fleche Street 8.5 m North from South curb	90	205	295
C10	Provencher Boulevard 75.5 m East of Southeast corner of Provencher Boulevard and La Fleche Street 5.0 m North from South curb	75	195	270
C11	Provencher Boulevard 75.5 m East of Southeast corner of Provencher Boulevard and La Fleche Street 1.6 m North from South curb	95	200	295

Pavement Core Photos



Photo 1 – Core 1



Photo 2 – Core 2



Photo 3 – Core 3



Photo 4 – Core 4



Photo 5 – Core 5



Photo 6 – Core 6



Photo 7 – Core 7



Photo 8 – Core 8



Photo 9 – Core 9



Photo 10 – Core 10



Photo 11 – Core 11