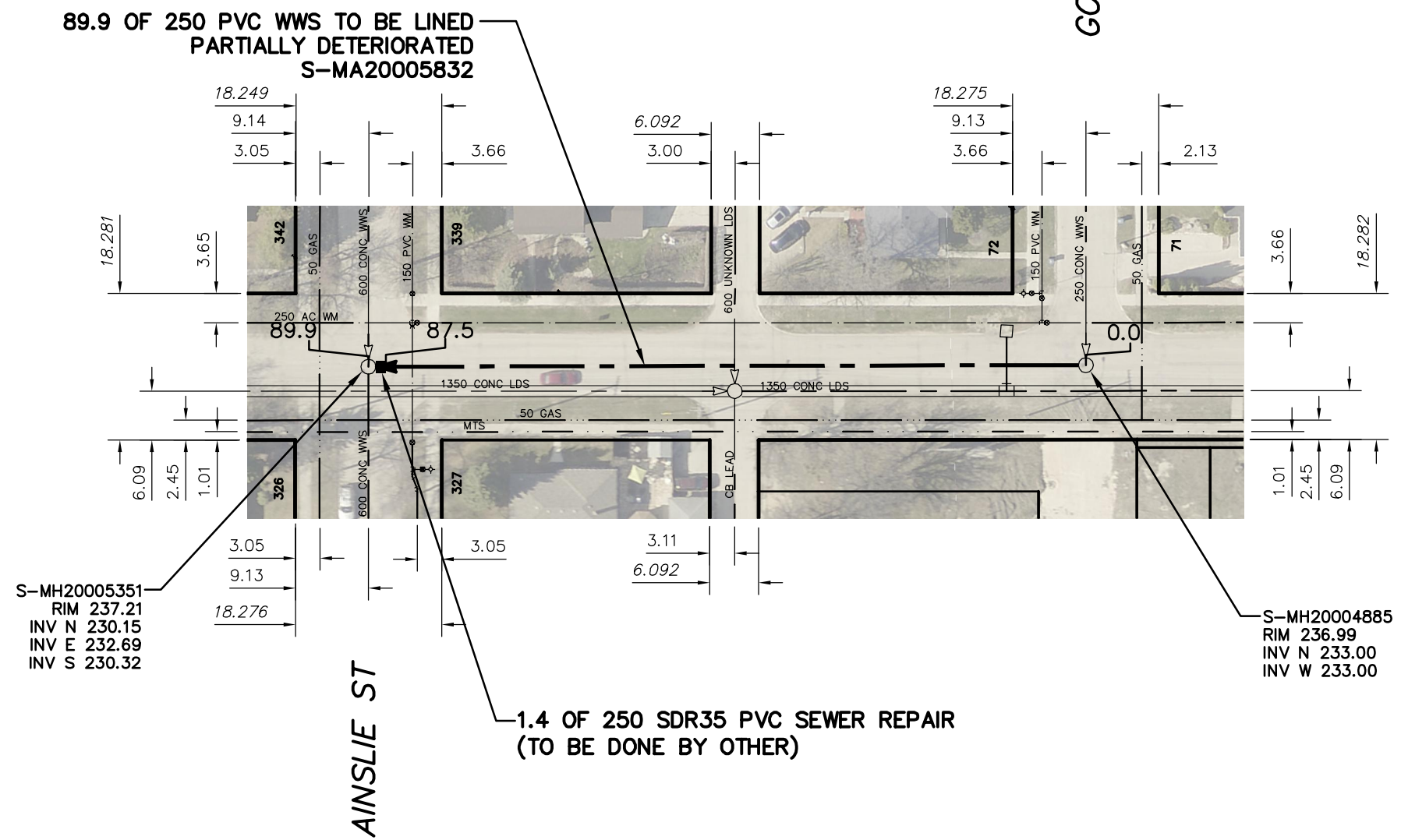




# LODGE AVENUE

GOLDEN GATE BAY



**89.9 OF 250 PVC WWS TO BE LINED  
PARTIALLY DETERIORATED  
S-MA20005832**

**1.4 OF 250 SDR35 PVC SEWER REPAIR  
(TO BE DONE BY OTHER)**

SEWER JUNCTION INFORMATION FROM SEWER VIDEO INSPECTION		
SEWER ID S-MA20005832		
DISTANCE FROM MH ID S-MH20004885		
DISTANCE	DIAMETER	CLOCK
1.9	150	10
2.8	150	10
23.3	150	10
66.4	150	2

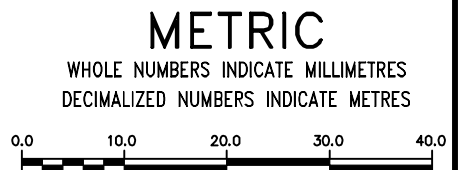
**WARNING**

IF POWER EQUIPMENT OR EXPLOSIVES ARE TO BE USED FOR EXCAVATION ON THIS PROJECT THE CONTRACTOR MUST:

- 1) NOTIFY THE GAS COMPANY OF THE PROPOSED LOCATION OF EXCAVATION.
- 2) TAKE PRECAUTION TO AVOID DAMAGE TO GAS COMPANY INSTALLATIONS.

SEE PROVINCIAL REGULATION 210/72 FOR DETAILS

**FOR INDEX SEE  
11551**



LOCATION APPROVED  
UNDERGROUND STRUCTURES

SUPV. U/G STRUCTURES COMMITTEE \_\_\_\_\_ DATE \_\_\_\_\_

NOTE:  
LOCATION OF UNDERGROUND STRUCTURES AS SHOWN ARE BASED ON THE BEST INFORMATION AVAILABLE BUT NO GUARANTEE IS GIVEN THAT ALL EXISTING UTILITIES ARE SHOWN OR THAT THE GIVEN LOCATIONS ARE EXACT. CONFIRMATION OF EXISTENCE AND EXACT LOCATION OF ALL SERVICES MUST BE OBTAINED FROM THE INDIVIDUAL UTILITIES BEFORE PROCEEDING WITH CONSTRUCTION.

NO.	REVISIONS	DATE	BY

DESIGNED BY	SC	CHECKED BY	SC
DRAWN BY	RJ	APPROVED BY	KZ
SCALE:	1:750	RELEASED FOR CONSTRUCTION	K. ZUREK
HORIZONTAL		DATE	2017 06 06
VERTICAL		DATE	2017 07 04
DATE	2017 07 04	DATE	2017 06 06
PLOT DATE:	2017 07 04		

ENGINEER'S SEAL

**ORIGINAL  
SIGNED BY  
S.R.J.  
COURNOYER  
17/06/05**

CONSULTANT DRAWING NUMBER  
-

**THE CITY OF WINNIPEG**  
WATER AND WASTE DEPARTMENT  
ENGINEERING DIVISION

2016 SEWER MAIN RENEWALS  
BY CIPP LINING  
**LODGE AVENUE**  
MH AT AINSLIE STREET TO  
1ST MH E OF AINSLIE STREET

SHEET <b>39</b> OF <b>79</b>
CITY DRAWING NUMBER <b>11588</b>