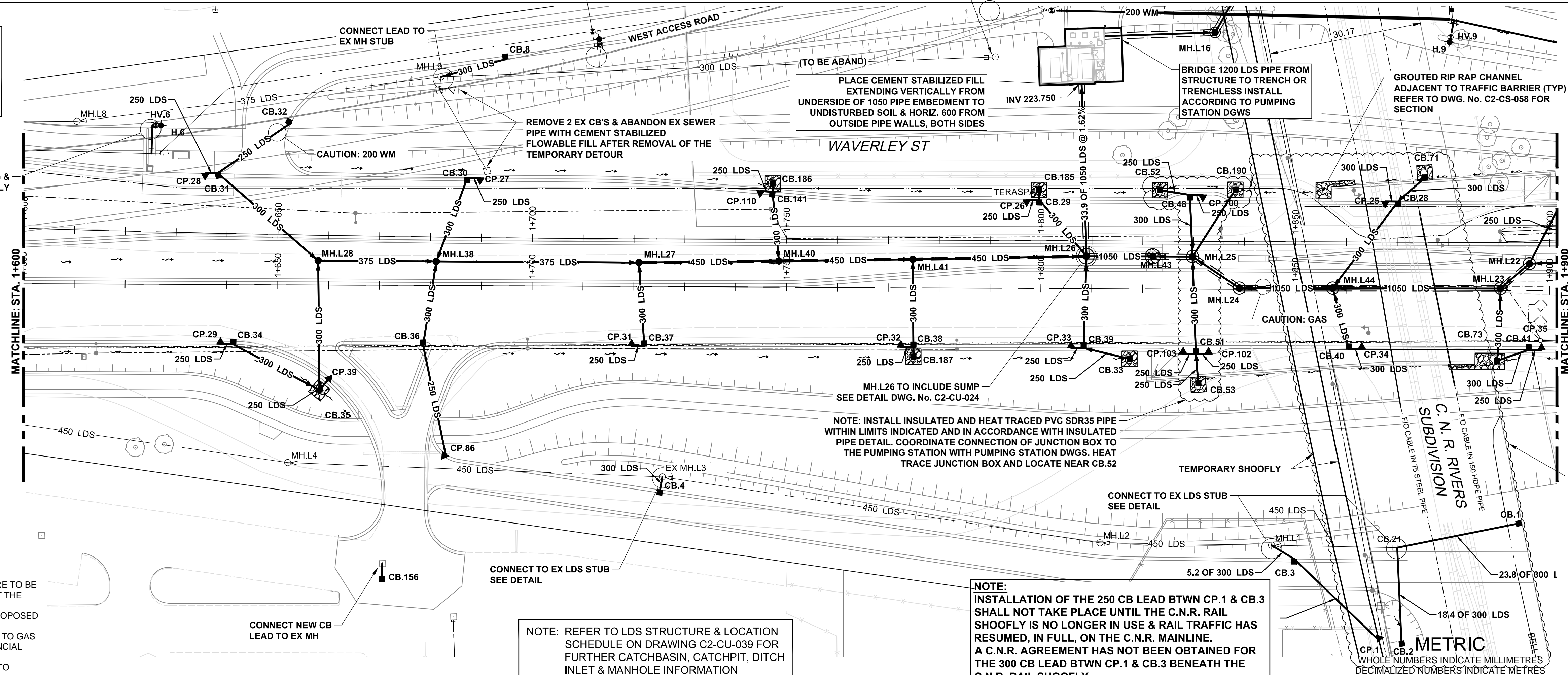


CHAINAGE ALONG CL OF WAVERLEY ST

EXISTING STORM WATER
RETENTION BASIN
SRB 6-22:
NWL - 229.82
HWL - 231.04



WARNING
IF POWER EQUIPMENT OR EXPLOSIVES ARE TO BE
USED FOR EXCAVATION ON THIS PROJECT THE
CONTRACTOR MUST:
1. NOTIFY THE GAS COMPANY OF THE PROPOSED
LOCATION OF EXCAVATION.
2. TAKE PRECAUTION TO AVOID DAMAGE TO GAS
COMPANY INSTALLATIONS SEE PROVINCIAL
REGULATION 210/72 FOR DETAILS.
3. OBTAIN EXCAVATION PERMITS PRIOR TO
CONSTRUCTION.

NOTE: REFER TO LDS STRUCTURE & LOCATION
SCHEDULE ON DRAWING C2-CU-039 FOR
FURTHER CATCHBASIN, CATCHPIT, DITCH
INLET & MANHOLE INFORMATION

NOTE:
INSTALLATION OF THE 250 CB LEAD BTWN CP.1 & CB.3
SHALL NOT TAKE PLACE UNTIL THE C.N.R. RAIL
SHOOFLY IS NO LONGER IN USE & RAIL TRAFFIC HAS
RESUMED, IN FULL, ON THE C.N.R. MAINLINE.
A C.N.R. AGREEMENT HAS NOT BEEN OBTAINED FOR
THE 300 CB LEAD BTWN CP.1 & CB.3 BENEATH THE
C.N.R. RAIL SHOOFLY.

150 WM	WATER MAIN	150 WM	PIPE ABANDONMENTS	150 WM	WATER MAIN	150 WM
	HYDRANT		SURVEY BAR		HYDRANT	
	LAND DRAINAGE SEWER		REDUCER		LAND DRAINAGE SEWER	
	WASTE WATER SEWER		COUPLING		WASTE WATER SEWER	
	SEWER SERVICE PIPE		ANODE		SEWER SERVICE PIPE	
	DRAINAGE CONNECTION PIPE		HYDRO MTS		DRAINAGE CONNECTION PIPE	
	CATCH BASIN		GAS TESTHOLE		CATCH BASIN	
	CULVERT		LAMP STANDARD		CULVERT	
EXISTING	LEGEND - PLAN	NEW	LEGEND - PLAN	EXISTING	LEGEND - PROFILE	NEW

UNDERGROUND STRUCTURES	B.M. ELEV.
SUPV. U/G STRUCTURES	DATE
LOCATION OF UNDERGROUND STRUCTURES AS SHOWN ARE BASED ON THE BEST INFORMATION AVAILABLE, BUT NO GUARANTEE IS GIVEN THAT ALL EXISTING UTILITIES ARE SHOWN OR THAT THE GIVEN LOCATIONS ARE EXACT. CONFIRMATION OF EXISTENCE AND EXACT LOCATION OF ALL SERVICES MUST BE OBTAINED FROM THE INDIVIDUAL UTILITIES BEFORE PROCEEDING WITH CONSTRUCTION.	

B.M. ELEV.			
0	ISSUED FOR TENDER	17/01/09	Wjd
NO.	REVISIONS	DATE	BY

AECOM	
DESIGNED BY	MPG
DRAWN BY	KLC
HOR. SCALE	1:500
VERTICAL	1:100
0 ISSUED FOR TENDER	17/01/09
NO. REVISIONS	DATE

ENGINEER'S SEAL
PROVINCE OF MANITOBA
M.P.A. GAUDREAU
Member 32167
REGISTERED PROFESSIONAL ENGINEER
CONSULTANT PROJECT NUMBER
60321148

THE CITY OF WINNIPEG PUBLIC WORKS DEPARTMENT	
WAVERLEY STREET UNDERPASS AT CN MILE 3.89 RIVERS SUB CONTRACT 2: UNDERPASS STRUCTURE, RAILWORKS, ROADWORKS, LAND DRAINAGE SEWER, PUMPING STATION AND LANDSCAPING WORKS	CITY DRAWING NUMBER U239-2016-C2-CU-023
WAVERLEY STREET - PLAN/PROFILE LDS STATION 1+600 to STATION 1+900	SHEET 23 OF 41
	CONSULTANT DRAWING NUMBER C2-CU-023

APEGM
Certificate of Authorization
AECOM Canada Ltd.
No. 4671 Date: _____

BID OPPORTUNITY NO. 473-2016