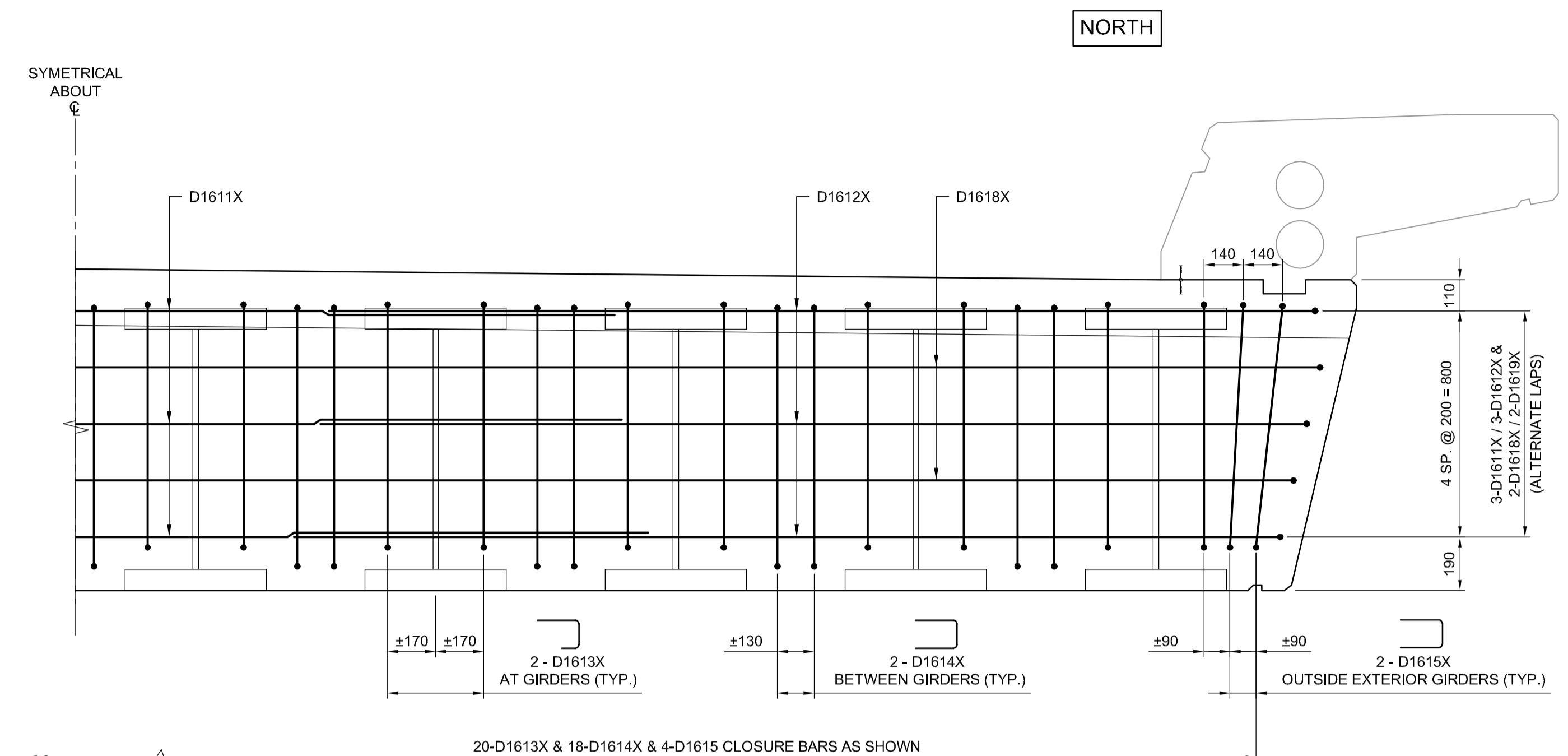
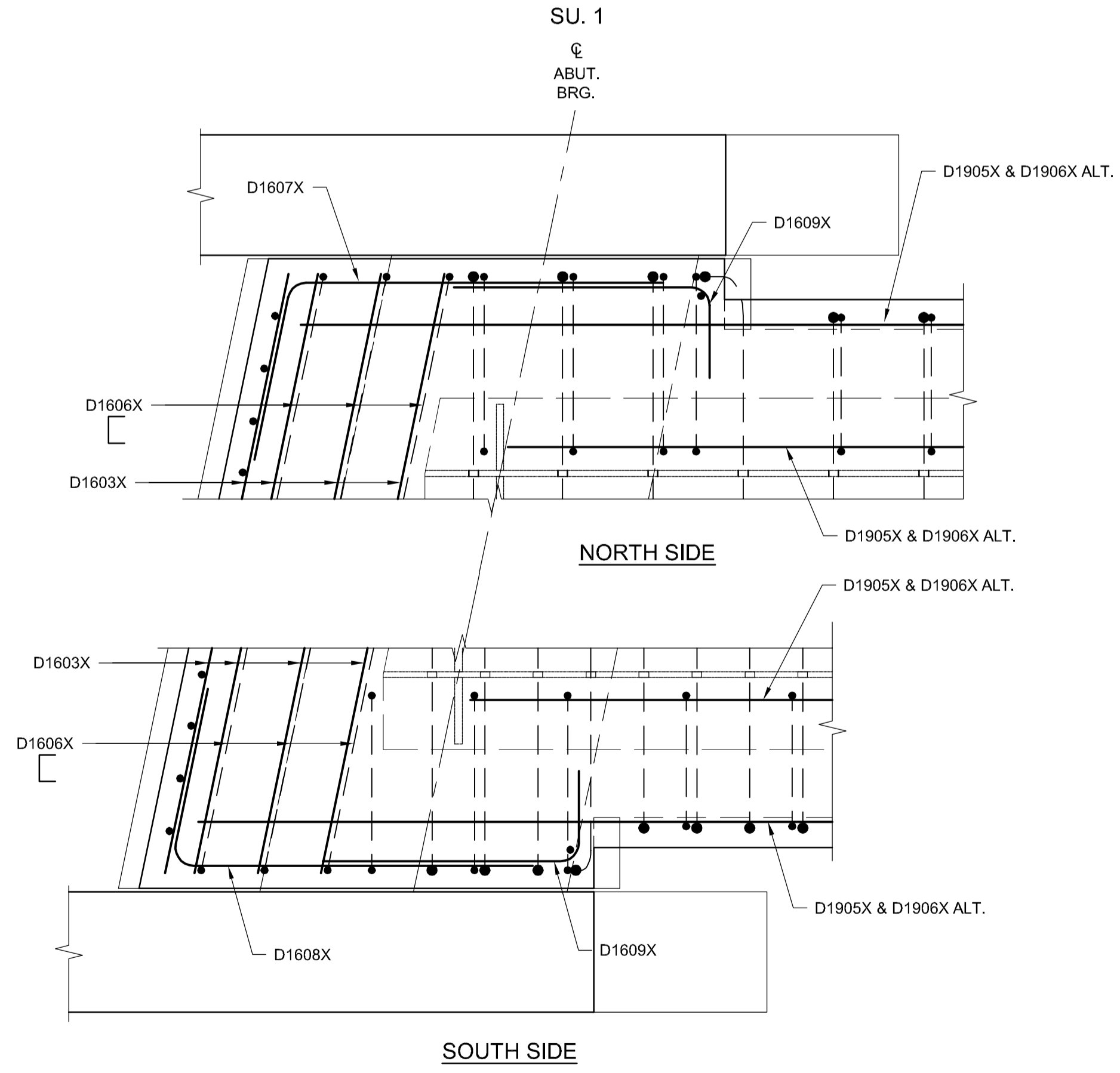


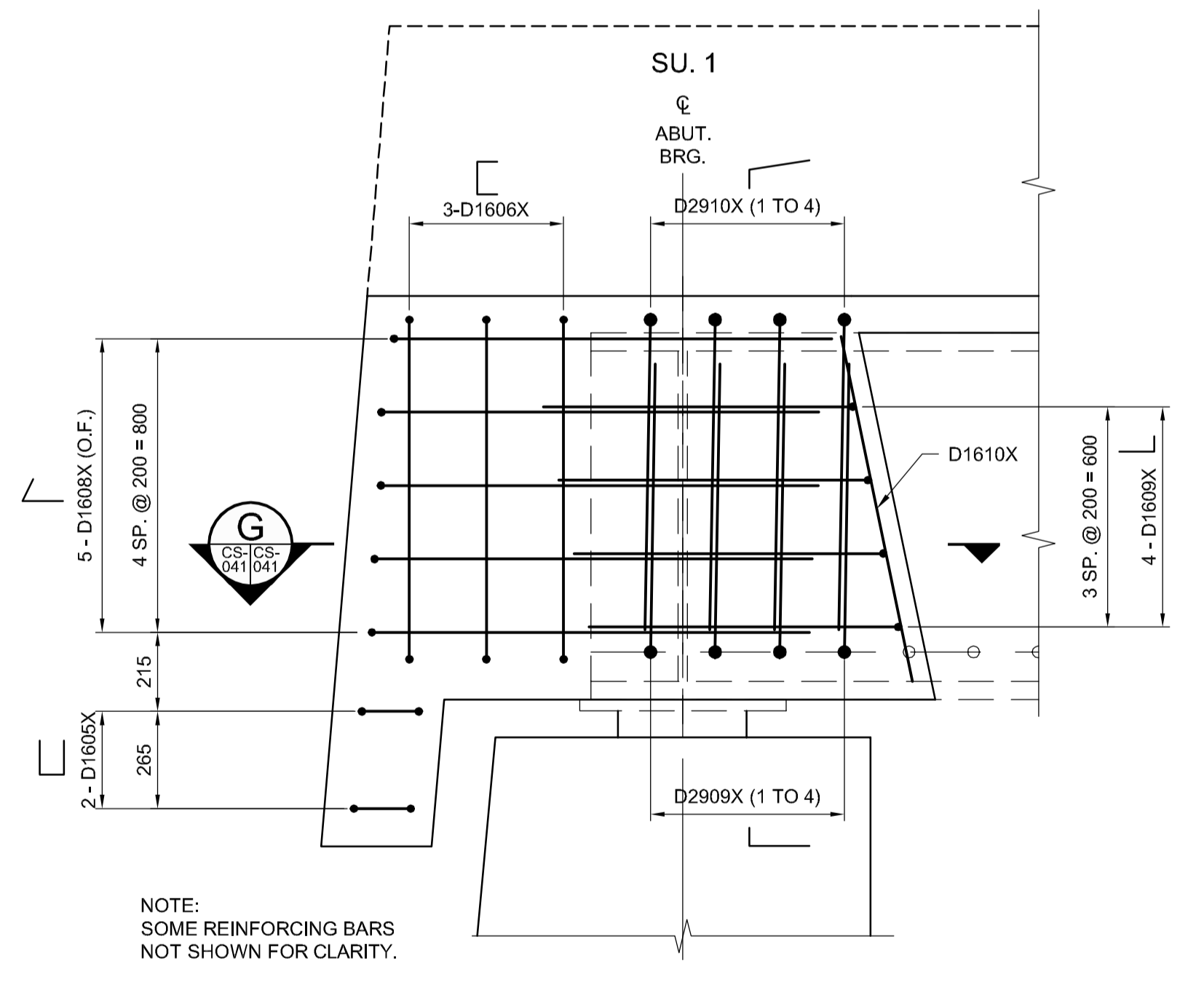
E SECTION
SCALE: 1:15
TYPICAL AT ABUTMENTS



F SECTION
SCALE: 1:15
TYPICAL AT PIERS



G SECTION
SCALE: 1:15
SU.1 SHOWN, SU.4 SIMILAR



1 ELEVATION
SCALE: 1:15
DECK END DIAPHRAGM - SOUTH ELEVATION
TYPICAL AT ABUTMENTS

- NOTES:**
- FOR REINFORCING STEEL NOTES REFER TO SHEET C2-CS-001.
 - REINFORCING STEEL WITH MARKS ENDING WITH "X" SHALL BE MICRO COMPOSITE REINFORCING STEEL CHROMX 9000 (MMFX2)
 - FOR CONCRETE CLEAR COVER TO REINFORCEMENT REFER TO SHEET C2-CS-001.

G:\CAD\163353\Technical Workspace\Engineering\Drawings and Figures\Structures\Contract\163353-C2-CON-CS-DECK SLAB REINFORCING 5.dwg



DESIGNED BY	RE	CHECKED BY	SSR
DRAWN BY	CGC	APPROVED BY	DBW
HOR. SCALE	AS SHOWN	RELEASED FOR CONSTRUCTION	
VERTICAL SCALE	AS SHOWN		
ISSUED FOR TENDER	17/01/09	RE	
NO. REVISIONS	DATE	BY	DATE

DILLON CONSULTING	
ENGINEER'S SEAL	PROVINCE OF MANITOBA
R.B. ERIC Member 22665 REGISTERED PROFESSIONAL ENGINEER	
CONSULTANT PROJECT NUMBER	16-3353

ENGINEER'S SEAL	PROVINCE OF MANITOBA
R.B. ERIC Member 22665 REGISTERED PROFESSIONAL ENGINEER	
CONSULTANT PROJECT NUMBER	16-3353

THE CITY OF WINNIPEG
PUBLIC WORKS DEPARTMENT

Waverley Street Underpass at CN Mile 3.89 Rivers Sub
CONTRACT 2: UNDERPASS STRUCTURE, RAILWORKS,
ROADWORKS, LAND DRAINAGE SEWER, PUMPING STATION
AND LANDSCAPING WORKS

CITY DRAWING NUMBER
U-239-2016-C2-CS-041
SHEET **041** OF 085
CONSULTANT DRAWING NUMBER
C2-CS-041

**DECK SLAB REINFORCING
DETAILS - SHEET 2**