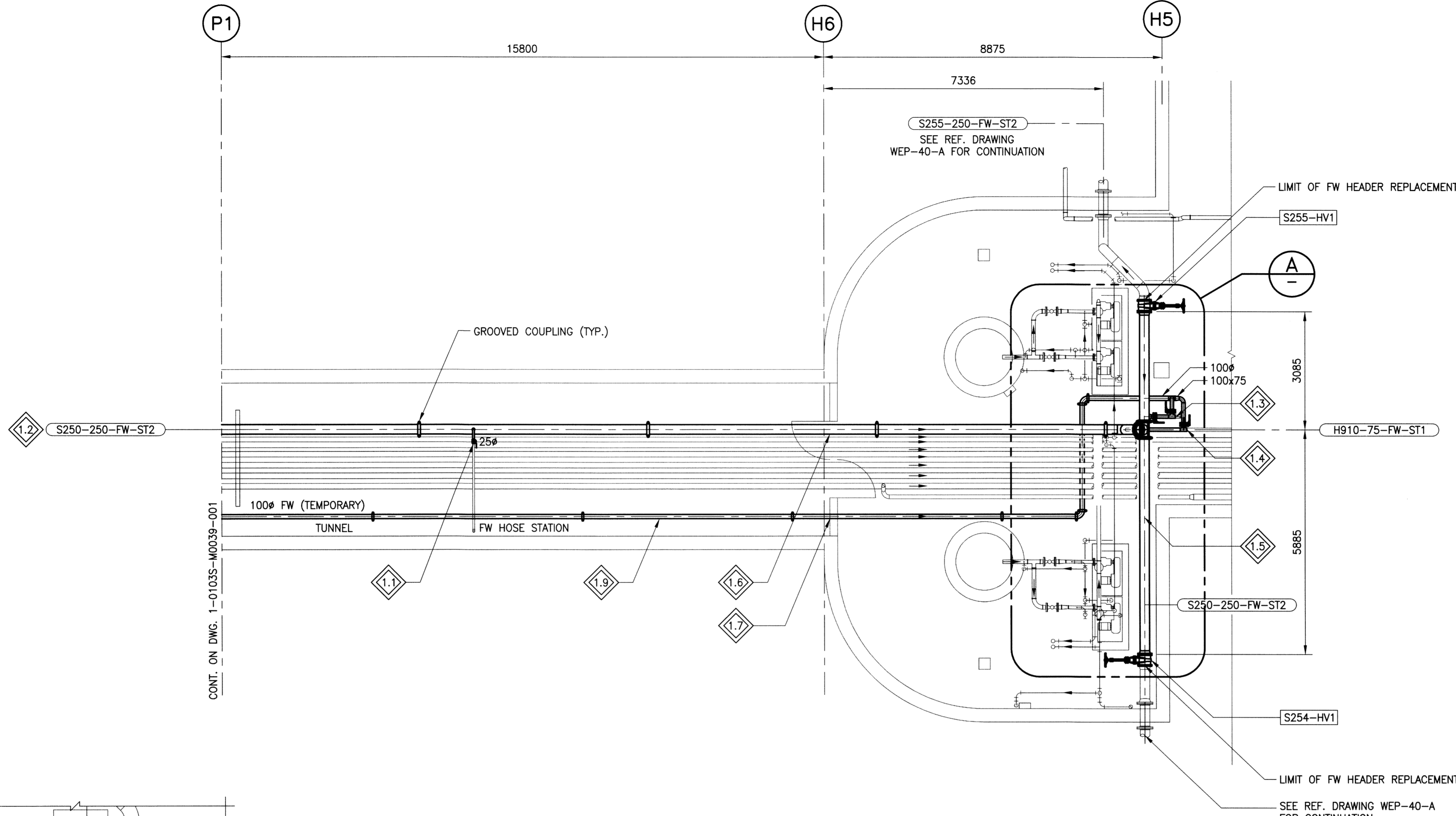
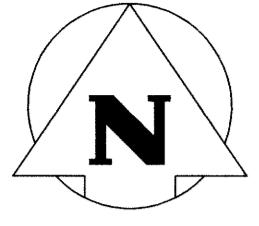


File Name: P:\Projects\2015\15-0107-012\Mech\15-0107-012_M18.dwg - Tab: M18 Plotted By: Dberoché 05/09/2016 [Mon 1:26pm]
 CW-9-M564-1

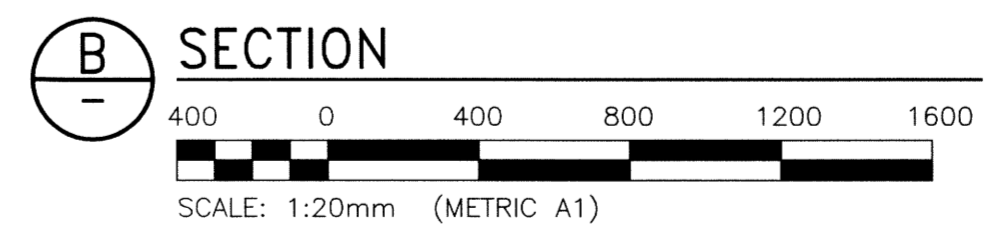
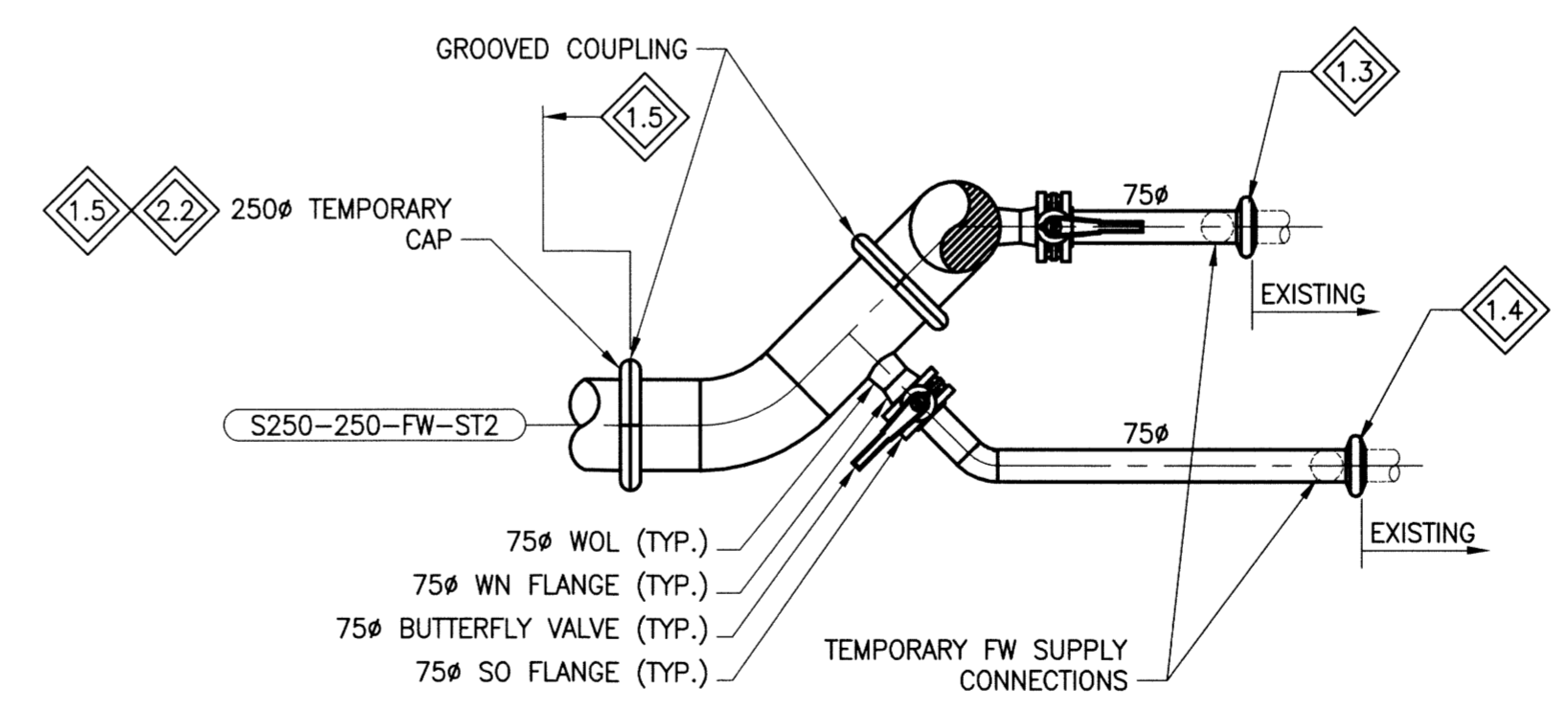
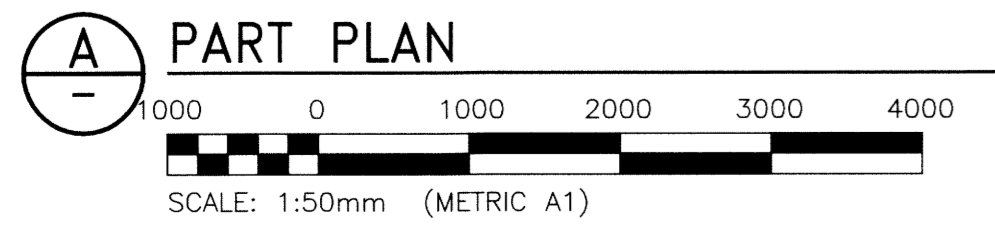
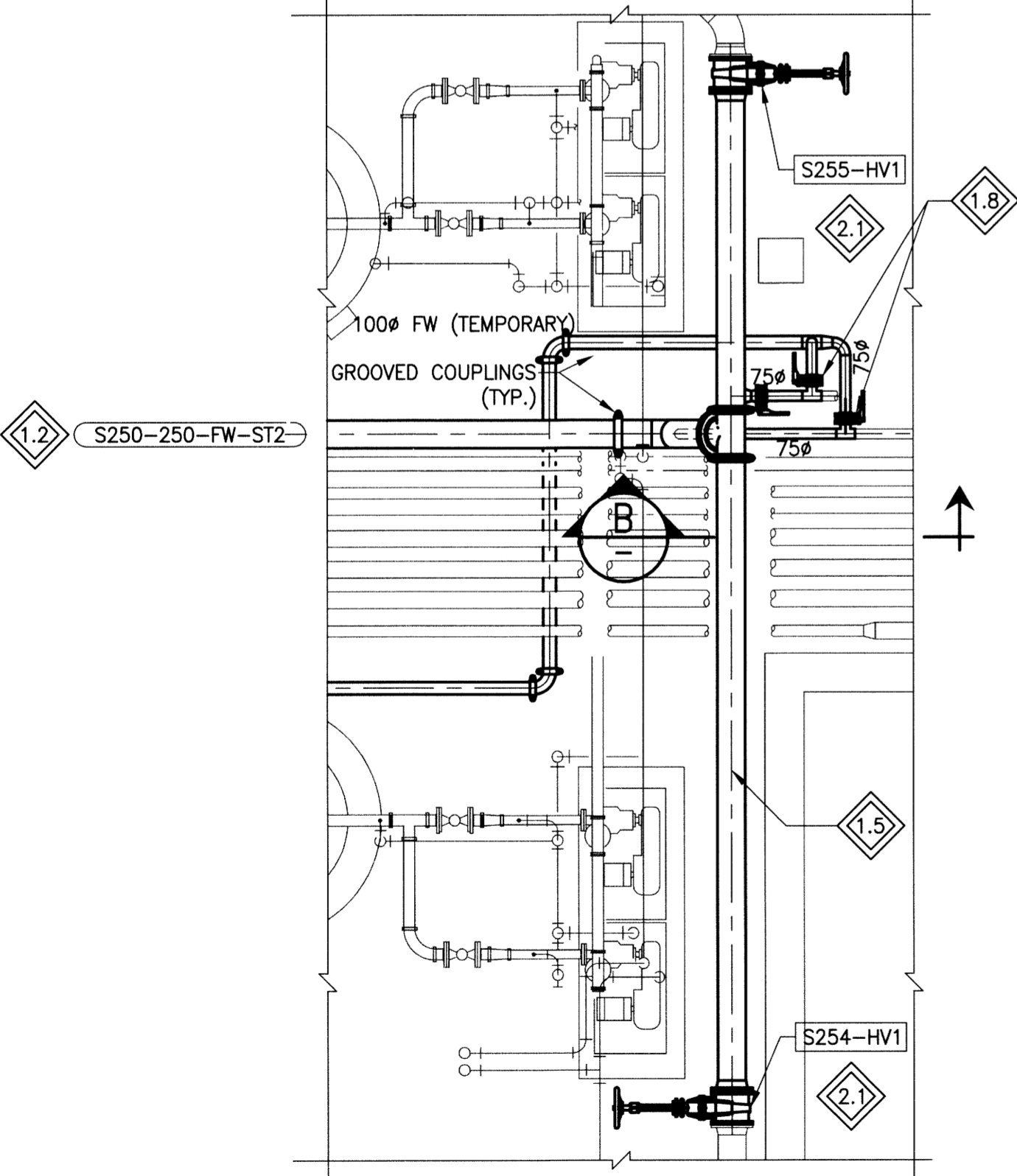
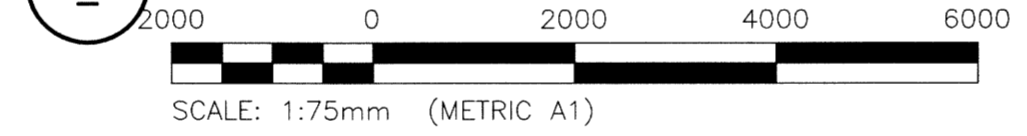


GENERAL NOTES:
 1. REFER TO DRAWING M14 FOR GENERAL NOTES.

- KEYNOTES:**
- PHASE 1**
- 1.1 CONNECT TO EXISTING 250# LINE TO FW HOSE STATION.
 - 1.2 INSTALL NEW 250# FW HEADER IN SAME LOCATION AS EXISTING HEADER.
 - 1.3 CONNECT TO EXISTING 75# FW LINE AT EXISTING GROOVED COUPLING.
 - 1.4 CONNECT TO EXISTING 75# FW LINE AT EXISTING GROOVED COUPLING.
 - 1.5 250# PIPING BETWEEN VALVES S254-HV1 AND S255-HV1 SHALL BE REPLACED IN A MANNER THAT WILL MINIMIZE INTERRUPTION OF FIRE PROTECTION WATER SUPPLY FROM NORTH WATERMAIN S255-250-FW TO SOUTH EXTERIOR HYDRANT. PROVIDE TEMPORARY CAP ON LINE TO FACILITATE REPLACEMENT OF 250# HEADER.
 - 1.6 ROUTE NEW LINE THROUGH EXISTING WALL PENETRATION AND FIRESTOP.
 - 1.7 PROVIDE NEW PENETRATION IN CONCRETE BLOCK WALL FOR TEMPORARY PIPE AND FIRESTOP. FOLLOWING PIPE REMOVAL, SEAL OPENING WITH NON SHRINK GROUT, SIKAGROUT 212SR.
 - 1.8 INSTALL BLIND FLANGE ON VALVE FOLLOWING REMOVAL OF TEMPORARY LINE.
 - 1.9 FIELD ROUTE TEMPORARY 100# FW HEADER. SUPPORT ON NEW HANGERS EVERY 5m, AT CONCENTRATED LOADS, AND AT DIRECTION CHANGES.

- PHASE 2**
- 2.1 REPLACE VALVES S255-HV1 AND S254-HV1, c/w SUPERVISORY SWITCHES.
 - 2.2 REMOVE TEMPORARY CAP AND CONNECT TO NEW 250# FW SUPPLY HEADER.

5 PART PLAN - GRIT CHAMBERS AND SLUDGE STORAGE

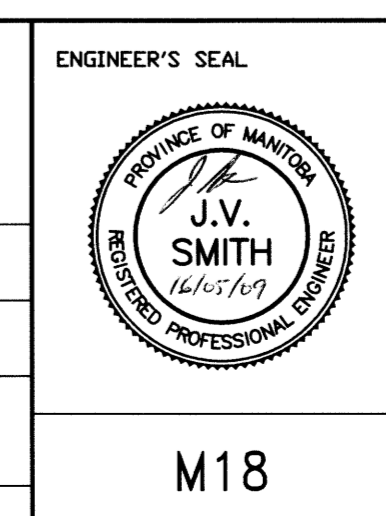


METRIC
 WHOLE NUMBERS INDICATE MILLIMETRES
 DECIMALIZED NUMBERS INDICATE METRES



FIELD BOOK #		
POSTED TO LBIS		
0 ISSUED FOR CONSTRUCTION	16/05/09	J/S
NO. REVISIONS	DATE	BY

KGS GROUP CONSULTING ENGINEERS	
DESIGNED BY JS	CHECKED BY MGL
DRAWN BY JFS	APPROVED BY J/S
HDR. SCALE AS NOTED	RELEASED FOR CONSTRUCTION
VERTICAL AS NOTED	DATE 2016 02 23
	DATE 2016-05-09



THE CITY OF WINNIPEG WATER AND WASTE DEPARTMENT	
WEWPC FW PIPE REPLACEMENT	SHEET 1 OF 1
MECHANICAL	
GRIT CHAMBERS AND SLUDGE STORAGE FW PIPING - PLAN	CITY DRAWING NUMBER 1-0103S-M0040-001