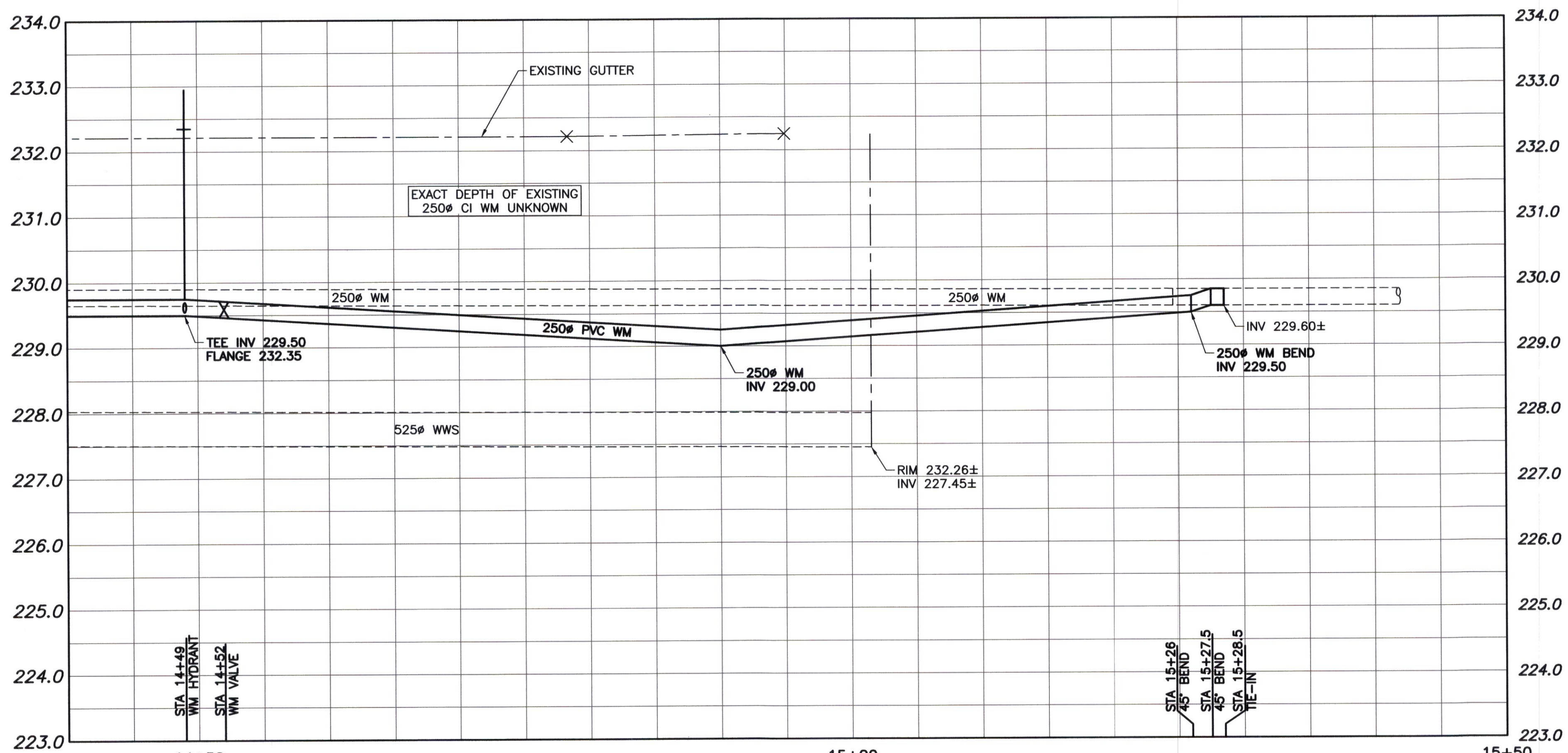
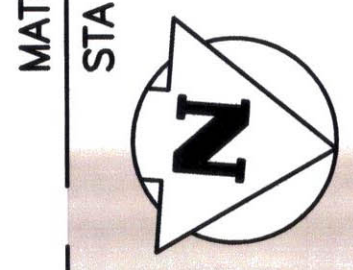


File Name: U:\FMS\15-0107-021\15-0107-021_CALL.dwg - Tab: C13 Plotted By: gloewen 16/03/15 [Tue 12:58pm]

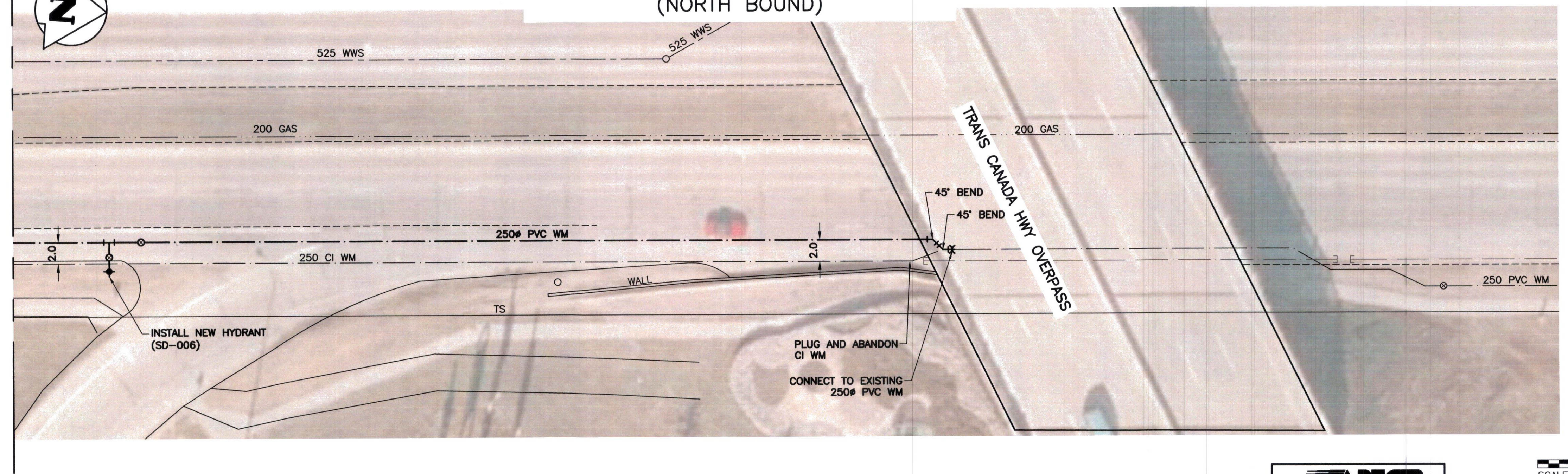


CHAINAGE MEASURED ALONG
E.P. OF PEMBINA HIGHWAY

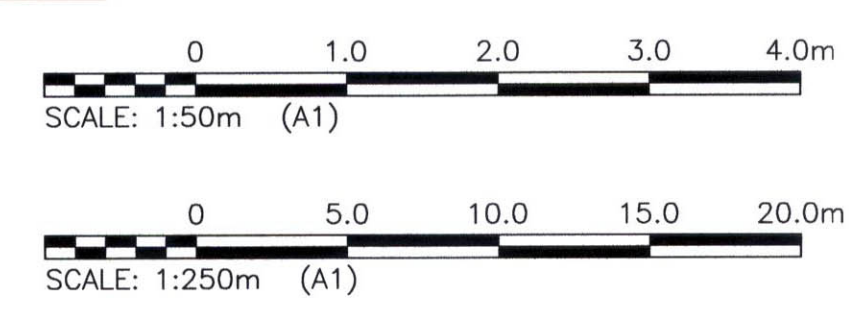
PROFILE
SCALE: 1:250H 1:50V



PEMBINA HIGHWAY (NORTH BOUND)



PLAN
SCALE: 1:250



WARNING

- NOTIFY THE GAS COMPANY OF THE PROPOSED LOCATION OF EXCAVATION.
- TAKE PRECAUTION TO AVOID DAMAGE TO GAS COMPANY INSTALLATIONS.
- SEE PROVINCIAL REGULATION 210/72 FOR DETAILS.

PROPERTY LIMITS DELINEATION

DELINEATION OF PROPERTY LIMITS AS SHOWN ON THIS DWG DOES NOT REPRESENT A "LEGAL SURVEY". KGS GROUP MAKES NO REPRESENTATION OR WARRANTY AS TO THE ACCURACY OF PROPERTY LIMITS DELINEATED ON THIS DWG, NOR ON THE DIMENSIONAL ACCURACY OF DWG FEATURES RELATIVE TO THOSE PROPERTY LIMITS.

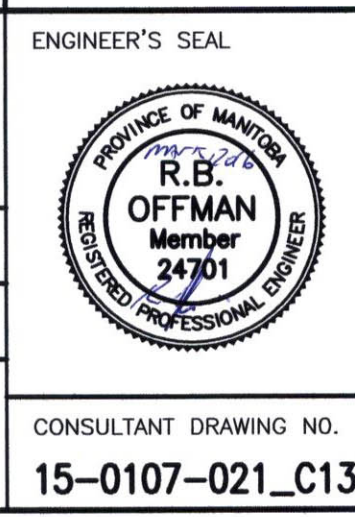
METRIC

WHOLE NUMBERS INDICATE MILLIMETRES
DECIMALIZED NUMBERS INDICATE METRES

150 WM	WATERMAIN	150 WM	HYDRO	150 WM	WATERMAIN	150 WM
HYDRANT	HYDRANT	HYDRANT	M.T.S.	HYDRANT, VALVE	HYDRANT, VALVE	HYDRANT, VALVE
VALVE	VALVE	VALVE	CONCRETE	CONCRETE	CONCRETE	CONCRETE
300 LDS	LAND DRAINAGE SEWER	300 LDS	ASPHALT	ASPHALT	ASPHALT	ASPHALT
250 WWS	WASTE WATER SEWER	250 WWS	SIDEWALK	SIDEWALK	SIDEWALK	SIDEWALK
MANHOLE	MANHOLE	MANHOLE	PLANING	PLANING	PLANING	PLANING
CATCH BASIN	CATCH BASIN	CATCH BASIN	PROPERTY LINE	PROPERTY LINE	PROPERTY LINE	PROPERTY LINE
CURB INLET	CURB INLET	CURB INLET	SURVEY BAR	SURVEY BAR	SURVEY BAR	SURVEY BAR
BEND	BEND	BEND	GAS	GAS	GAS	GAS
REDUCER	REDUCER	REDUCER	CURB STOP	CURB STOP	CURB STOP	CURB STOP
TEE	TEE	TEE	TEE	TEE	TEE	TEE
EXISTING	LEGEND-PLAN	PROPOSED	EXISTING	LEGEND-PLAN	PROPOSED	EXISTING
LEGEND-PROFILE	LEGEND-PROFILE	LEGEND-PROFILE	LEGEND-PROFILE	LEGEND-PROFILE	LEGEND-PROFILE	LEGEND-PROFILE

LOCATION APPROVED UNDERGROUND STRUCTURES			
SUPV. U/G STRUCTURES COMMITTEE DATE			
NOTE: LOCATION OF UNDERGROUND STRUCTURES AS SHOWN ARE BASED ON THE BEST INFORMATION AVAILABLE BUT NO GUARANTEE IS GIVEN THAT ALL EXISTING UTILITIES ARE SHOWN OR THAT THE GIVEN LOCATIONS ARE EXACT. CONFIRMATION OF EXISTENCE AND EXACT LOCATION OF ALL SERVICES MUST BE OBTAINED FROM THE INDIVIDUAL UTILITIES BEFORE PROCEEDING WITH CONSTRUCTION.			
B.M. KGS BASE ELEV.	DWGS BASE ON C.S.R.S. NAD 83 SYSTEM UTM GRID.	DESIGNED BY	CHECKED BY
		MAT	BJM
		DRAWN BY	APPROVED BY
		DMW	RBO
		HOR. SCALE: 1:250	RELEASED FOR CONSTRUCTION: DATE
		VERTICAL: 1:50	DATE
0	ISSUED FOR CONSTRUCTION	16/03/16	
NO.	REVISIONS	DATE	BY
		16/02/19	

KGS GROUP CONSULTING ENGINEERS	
DESIGNED BY	CHECKED BY
MAT	BJM
DRAWN BY	APPROVED BY
DMW	RBO
HOR. SCALE: 1:250	RELEASED FOR CONSTRUCTION: DATE
VERTICAL: 1:50	DATE
0	ISSUED FOR CONSTRUCTION
NO.	REVISIONS
	DATE
	BY
	16/02/19



THE CITY OF WINNIPEG
WATER AND WASTE DEPARTMENT

2016 WATERMAIN RENEWALS CONTRACT 1

PEMBINA HIGHWAY
DE L'EGLISE AVEUE TO PTH #100 OVERPASS
STA 14+40 TO TIE-IN @ PTH #100 OVERPASS

SHEET 13 OF 13
COMPUTER FILE NAME 15-0107-021_CALL
CITY DRAWING NUMBER D-14257

CONSULTANT DRAWING NO. 15-0107-021_C13

CONSTRUCTION NOTES:

- INSTALL WATERMAIN BY TRENCHLESS METHODS.
- ALL MATERIALS TO CONFORM TO THE CITY OF WINNIPEG STANDARD CONSTRUCTION SPECIFICATIONS.
- MINIMUM COVER TO TOP OF PROPOSED WATERMAIN IS 2.5m FROM STREET CENTERLINE.
- INSTALL ALL HYDRANTS WITH FLANGE ELEVATION 50mm TO 150mm ABOVE FINISHED GRADE.
- REPLACE ALL EXISTING LEAD SERVICES FROM THE PROPOSED WATERMAIN TO PROPERTY LINE.
- BACKFILL UNDER OR WITHIN 1.0m OF PAVEMENTS, (INCLUDING SIDEWALKS) IS CLASS 3 BACKFILL EXCEPT AS NOTED. BACKFILL IN BOULEVARDS IS CLASS 5 BACKFILL.
- WATER VALVES ARE CLOCKWISE TO CLOSE (BLACK OPERATING NUT).
- THE CONTRACTOR TO REMOVE ALL VALVE BOXES AND CASINGS ALONG THE 150 AC WATERMAIN TO BE ABANDONED AND PATCHED RESULTANT HOLE.