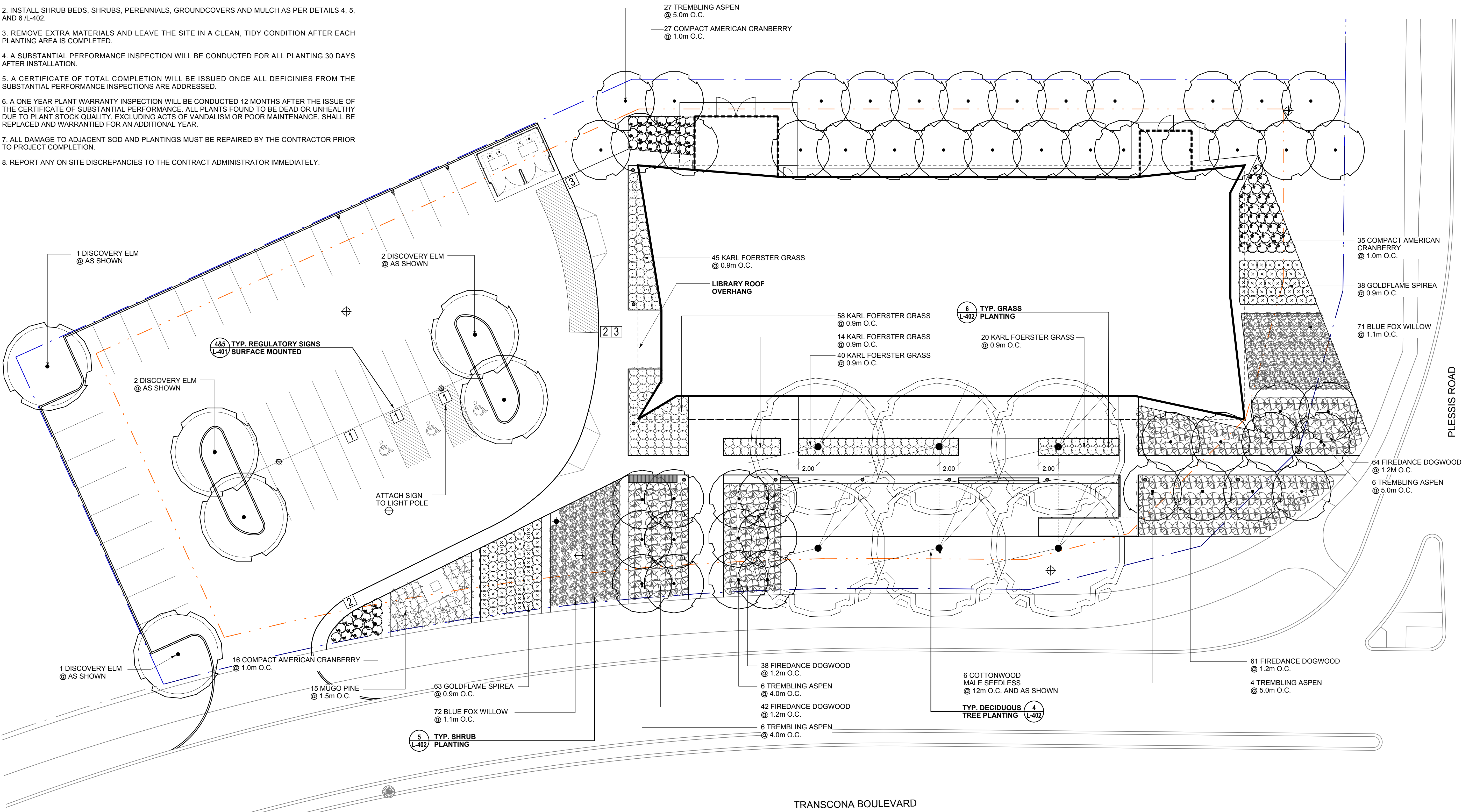


- PLANTING NOTES
1. ALL DIMENSIONS ARE IN METRES UNLESS OTHERWISE SPECIFIED.
 2. INSTALL SHRUB BEDS, SHRUBS, PERENNIALS, GROUNDCOVERS AND MULCH AS PER DETAILS 4, 5, AND 6 /L-402.
 3. REMOVE EXTRA MATERIALS AND LEAVE THE SITE IN A CLEAN, TIDY CONDITION AFTER EACH PLANTING AREA IS COMPLETED.
 4. A SUBSTANTIAL PERFORMANCE INSPECTION WILL BE CONDUCTED FOR ALL PLANTING 30 DAYS AFTER INSTALLATION.
 5. A CERTIFICATE OF TOTAL COMPLETION WILL BE ISSUED ONCE ALL DEFICIENCIES FROM THE SUBSTANTIAL PERFORMANCE INSPECTIONS ARE ADDRESSED.
 6. A ONE YEAR PLANT WARRANTY INSPECTION WILL BE CONDUCTED 12 MONTHS AFTER THE ISSUE OF THE CERTIFICATE OF SUBSTANTIAL PERFORMANCE. ALL PLANTS FOUND TO BE DEAD OR UNHEALTHY DUE TO PLANT STOCK QUALITY, EXCLUDING ACTS OF VANDALISM OR POOR MAINTENANCE, SHALL BE REPLACED AND WARRANTED FOR AN ADDITIONAL YEAR.
 7. ALL DAMAGE TO ADJACENT SOD AND PLANTINGS MUST BE REPAIRED BY THE CONTRACTOR PRIOR TO PROJECT COMPLETION.
 8. REPORT ANY ON SITE DISCREPANCIES TO THE CONTRACT ADMINISTRATOR IMMEDIATELY.



- LEGEND
- PROPERTY LINE
 - PROPERTY LINE SETBACK
- REGULATORY SIGNAGE
- 1 ACCESSIBLE PARKING STALL
 - 2 FIRE LANE - NO STOPPING
 - 3 DROP-OFF / PICK-UP - NO PARKING
- LINE PAINTING
- STALL LINES AND ACCESSIBILITY SYMBOLS
 - NO PARKING / CROSSING HATCH

4		
3		
2		
1	2017.02.17	Issued for Construction
No.	DATE	REVISION / ISSUANCE



Cibinel
Architecture Ltd
560 ACADEMY ROAD WINNIPEG, MB R3L 0E3
T. 204 989 8910 F. 204 989 8920



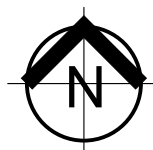
Project
TRANSCONA LIBRARY
1500 PLESSIS ROAD, WINNIPEG, MB

Sheet Title
SITE PLANTING & SIGNAGE PLAN

Project No.
1487

Sheet
L-300

PLANT SPECIFICATION LIST		
Quantity	Botanical / Common Name	Size / Remarks
<u>Deciduous Trees</u>		
6	<i>Populus deltoides</i> / Plains Cottonwood Male Seedless	70mm cal., 3.7 to 4.0m ht., 11 major branches in well formed head 2.0m above grade, B&B or tree mover, wire basket. Triple stake.
49	<i>Populus tremuloides</i> / Trembling Aspen	50mm cal., 2.7 to 3.1m ht., 9 major branches in well formed head 2.0m above grade, B&B or tree mover, wire basket. Triple stake.
6	<i>Ulmus davidiana</i> var. <i>Japonica</i> 'Discovery' / Discovery Elm	70mm cal., 3.7 to 4.0m ht., 11 major branches in well formed head 2.0m above grade, B&B or tree mover, wire basket. Triple stake.
<u>Coniferous Shrubs</u>		
15	<i>Pinus mugo</i> / Mugo Pine	600mm (24") Ø., Well formed, even growth. Container stock.
<u>Deciduous Shrubs</u>		
205	<i>Cornus sericea</i> 'Bailladeline' / Firedance Dogwood	500-600mm (20-24") ht., min. 5 major basal branches. Well formed, bushy plants. Container stock.
143	<i>Salix brachycarpa</i> 'Blue Fox' / Blue Fox Willow	500-600mm (20-24") ht., min. 5 major basal branches. Well formed, bushy plants. Container stock.
101	<i>Spiraea x bumalda</i> 'Goldflame' / Goldflame Spirea	500-600mm (20-24") ht., min. 5 major basal branches. Well formed, bushy plants. Container stock.
78	<i>Viburnum trilobum</i> 'compactum' / Compact American Cranberry	500-600mm (20-24") ht., min. 5 major basal branches. Well formed, bushy plants. Container stock.
<u>Grasses</u>		
177	<i>Calamagrostis x acutiflora</i> 'Karl Foerster' / Karl Foerster Reed Grass	2 yr. plants from division. No. 1 grade, well developed, vigorous root system.



1 SITE PLANTING & SIGNAGE PLAN
L-300 1:200