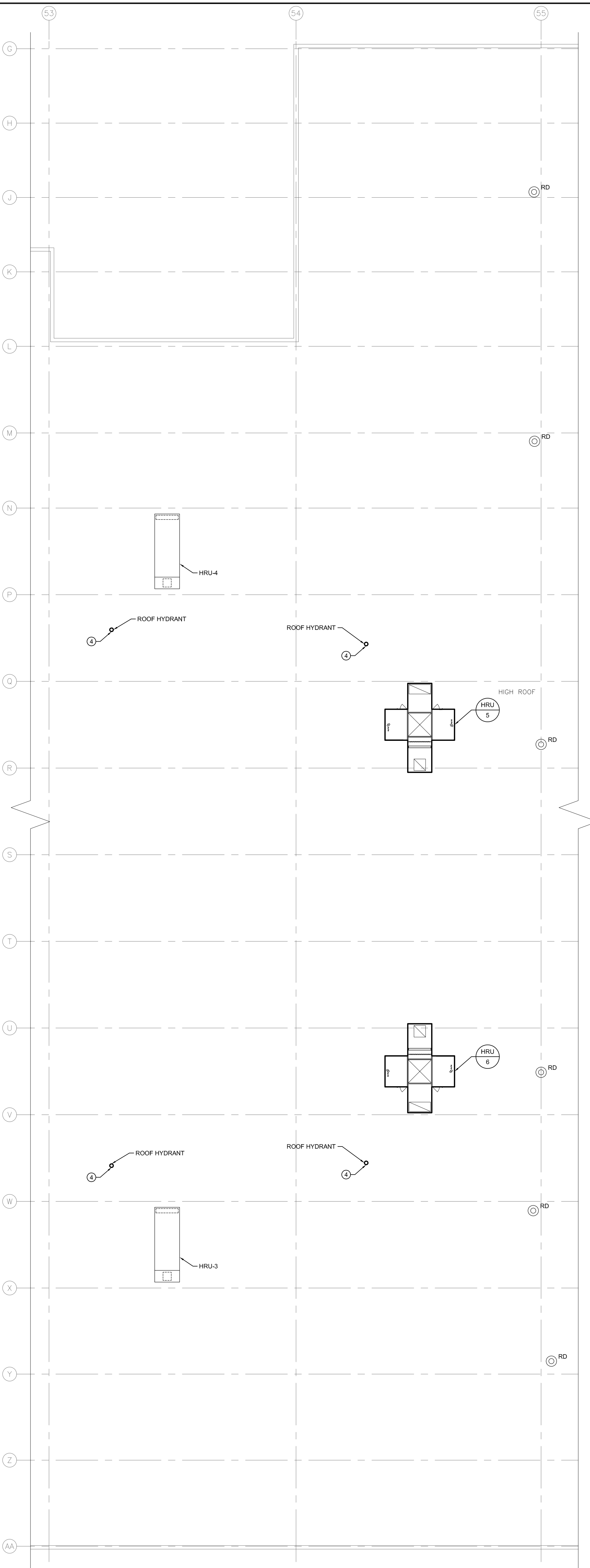
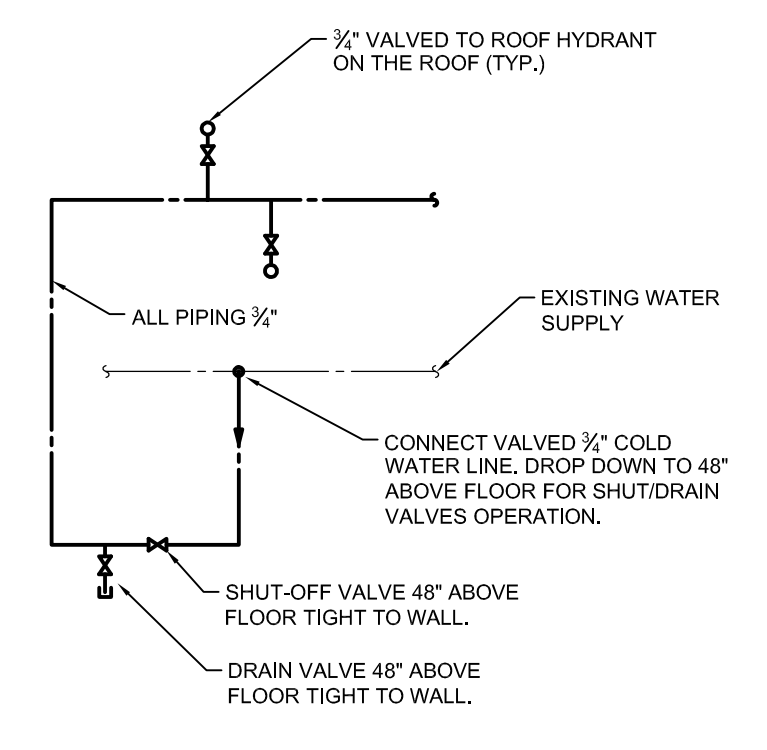


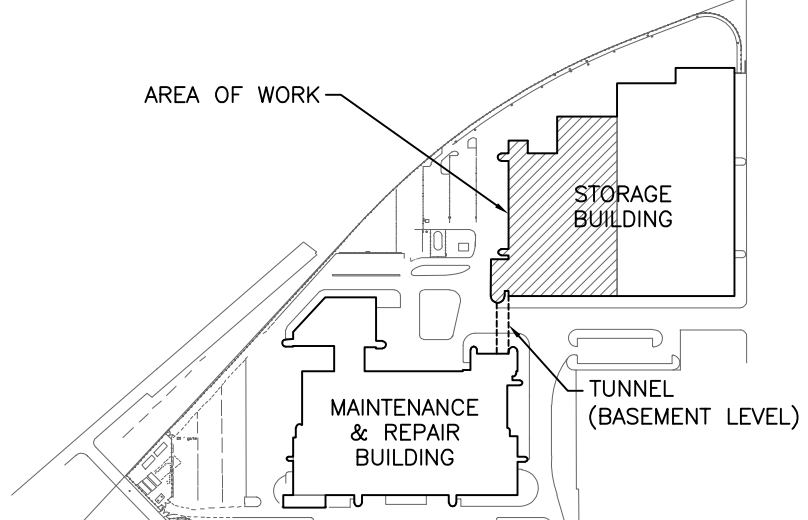
1 MAIN FLOOR PLAN - NEW CONSTRUCTION - PLUMBING  
SCALE: 1/16" = 1'-0"



2 ROOF PLAN - NEW CONSTRUCTION - PLUMBING  
SCALE: 1/16" = 1'-0"



3 SCHEMATIC DETAILS  
SCALE: NTS



KEY PLAN  
NTS

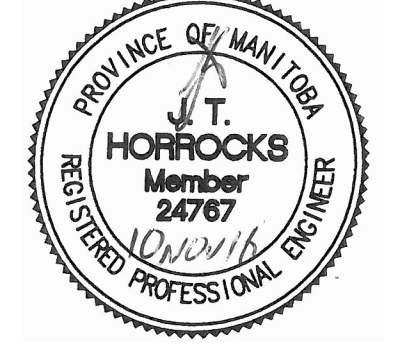
GENERAL NOTES

- A. ALL ABANDONED EQUIPMENT AND SERVICES WITHIN AREA OF WORK SHALL BE REMOVED.
- B. THIS BUILDING MAY CONTAIN ASBESTOS. REFER TO FRONT END SPECIFICATIONS FOR FURTHER INFORMATION.

KEY NOTES

- 1. CONNECT TO ROOF HYDRANT ABOVE ON ROOF.
- 2. CONNECT TO EXISTING WATER SUPPLY PIPING LINE. CONTRACTOR TO VERIFY EXACT LOCATION ON SITE.
- 3. REFER TO SCHEMATIC 3M2.1 FOR DETAILS OF NEW ROOF HYDRANT SYSTEM.
- 4. NEW ROOF HYDRANT LOCATED BESIDE BOTTOM OF STAIR. COORDINATE FINAL LOCATION ON SITE.

5			
4			
3			
2			
1			
0	ISSUED FOR CONSTRUCTION	JH	10/11/16
NO.	Description	BY	DD/MM/YY



Project Title  
CITY OF WINNIPEG FORT ROUGE  
TRANSIT BASE - STORAGE TRACK  
1-12 VENTILATION UPGRADE

WINNIPEG MANITOBA  
Drawing Title  
MAIN FLOOR AND ROOF PLAN -  
NEW CONSTRUCTION -  
PLUMBING

Drawn By GB	Checked By XZ	Approved By JH
Scale AS SHOWN	Date SEPTEMBER 2016	Project No. 16-149-01
Revision Number 0	Drawing Number M2.1	Sheet Order 4 OF 9

16162\_MFL\_P\_L1\_UWG - NOVEMBER 18, 2016 - 2:58PM (GMT -5:00)