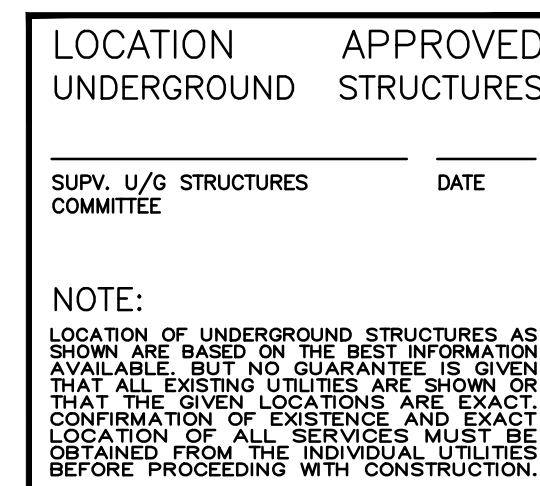
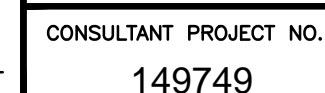




1. PROVIDE 120V 1Ø POWER FROM NEW TANDEM (DUPEX) 15A CIRCUIT BREAKER IN PANEL LP-RR.
2. EXISTING 40 HP AIR COMPRESSOR ELECTRICAL POWER TO BE DISCONNECT AND REMOVED, ASSOCIATED DISCONNECT SWITCH AND DEVICES TO BE DISCONNECTED AND REMOVED. CABLEING FROM MAIN DISTRIBUTION PANEL #18 TO EXISTING 40 HP AIR COMPRESSOR LOCATION TO BE REMOVED FROM CABLE TRAY AND TURNED OVER TO OWNER.
3. PROVIDE AND INSTALL NEW 3Ø 3MP 3 POLE 600 VOLT 14KA CIRCUIT BREAKER IN PANEL PP-WW FOR NEW AIR COMPRESSOR AC-01.
4. PROVIDE AND INSTALL NEW 15 AMP 3 POLE 600 VOLT 14KA CIRCUIT BREAKER IN PANEL PP-WW FOR NEW DRYER D-1.
5. PROVIDE AND INSTALL NEW 15 AMP TANDEM (DUPEX) 240 VOLT RATED CIRCUIT BREAKER IN PANEL LP-RR-B FOR DRYER D-2.
6. COORDINATE CABLE SUPPORT STRUCTURES WITH MECHANICAL EQUIPMENT AND PIPING TRADES.



DESIGNED BY	SCK
DRAWN BY	SCK
CHECKED BY	BLM
APPROVED BY	BLM
HOR. SCALE	NOTED
VERTICAL	



ELECTRICAL - FLOOR PLANS

CONSULTANT DRAWING NUMBER