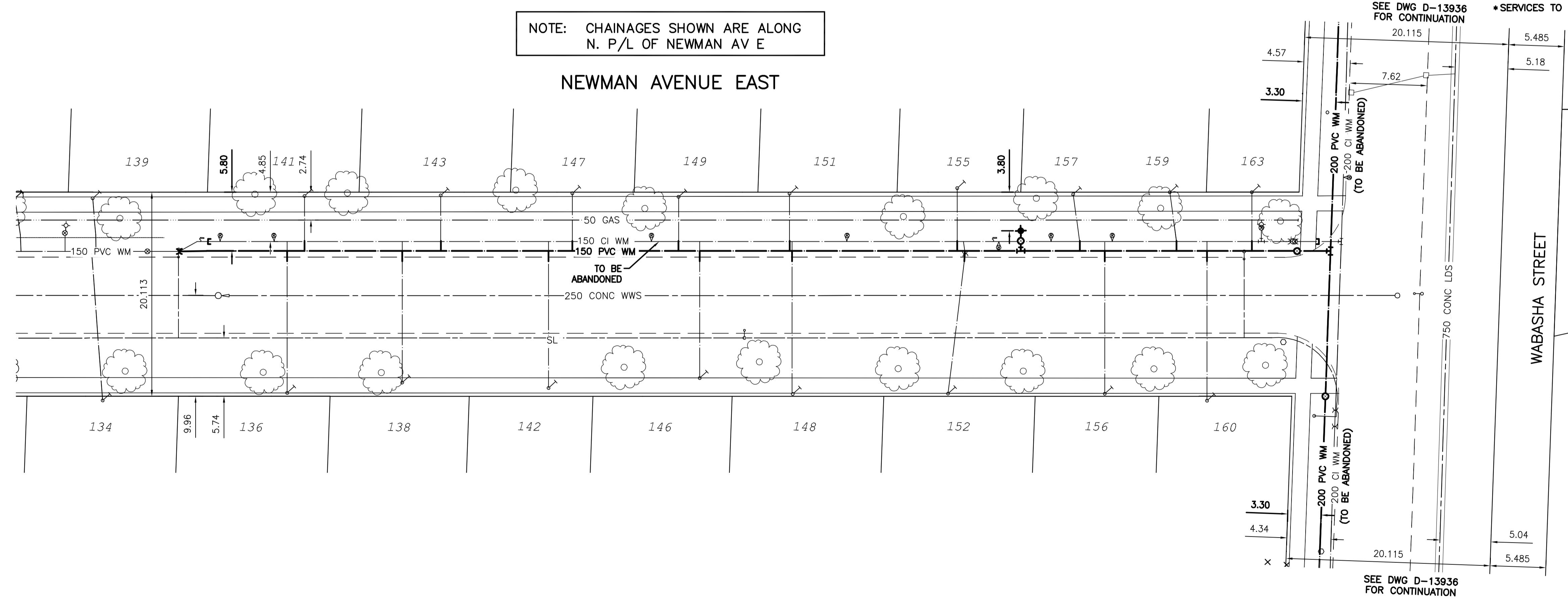


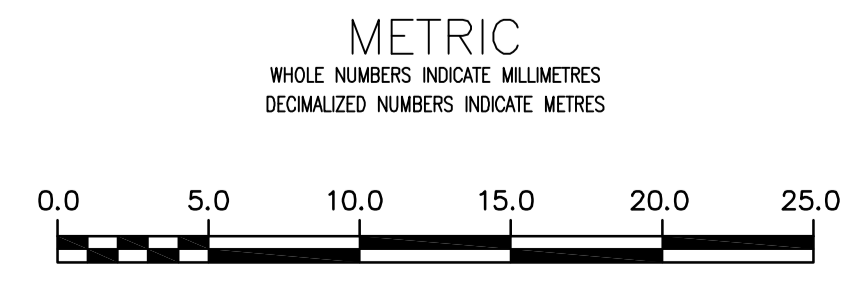
| WATER SERVICE INFORMATION   |                             |                            |                                  |                |                   |
|-----------------------------|-----------------------------|----------------------------|----------------------------------|----------------|-------------------|
| ADDRESS                     | SIZE (mm) MATERIAL (STREET) | SIZE (mm) MATERIAL (PROP.) | SHORT & LONG MEASUREMENT         | CORP. LOCATION | REMARKS           |
| 134 NEWMAN AV E RESIDENTIAL | 20 CU                       | 20 CU                      | 6.25 WEL HSE 6.40 FROM HSE FRONT | -              | RECONNECT SERVICE |
| 136 NEWMAN AV E RESIDENTIAL | -                           | 20 CU                      | 3.35 WEL OF HSE                  | -              | RECONNECT SERVICE |
| 138 NEWMAN AV E RESIDENTIAL | -                           | 20 CU                      | 7.92 OUT                         | -              | RECONNECT SERVICE |
| 139 NEWMAN AV E RESIDENTIAL | 20 CU                       | 20 CU                      | 5.39 WEL HSE 8.84 FROM HSE FRONT | -              | RECONNECT SERVICE |
| 141 NEWMAN AV E RESIDENTIAL | -                           | 20 CU                      | 1.25 EWL HSE 7.16 FROM HSE FRONT | -              | RECONNECT SERVICE |
| 142 NEWMAN AV E RESIDENTIAL | -                           | 20 CU                      | 4.27 WEL HSE 7.01 OUT            | -              | RECONNECT SERVICE |
| 143 NEWMAN AV E RESIDENTIAL | -                           | 20 CU                      | 3.05 WEL OF HSE                  | -              | RECONNECT SERVICE |
| 144 NEWMAN AV E RESIDENTIAL | -                           | 20 CU                      | 7.92 FROM HSE FRONT              | -              | RECONNECT SERVICE |
| 145 NEWMAN AV E RESIDENTIAL | -                           | 20 CU                      | 5.49 WEL HSE                     | -              | RECONNECT SERVICE |
| 146 NEWMAN AV E RESIDENTIAL | -                           | 20 CU                      | 1.88 WEL HSE 6.22 FROM HSE FRONT | -              | RECONNECT SERVICE |
| 147 NEWMAN AV E RESIDENTIAL | -                           | 20 CU                      | 3.51 WEL HSE 7.19 FROM HSE FRONT | -              | RECONNECT SERVICE |
| 148 NEWMAN AV E RESIDENTIAL | -                           | 20 CU                      | 4.57 EWL HSE 7.83 FROM HSE FRONT | -              | RECONNECT SERVICE |
| 149 NEWMAN AV E RESIDENTIAL | -                           | 20 CU                      | 2.44 EWL HSE 7.01 FROM HSE FRONT | -              | RECONNECT SERVICE |
| 151 NEWMAN AV E RESIDENTIAL | -                           | 20 CU                      | 1.77 EWL HSE 6.86 FROM HSE FRONT | -              | RECONNECT SERVICE |
| 152 NEWMAN AV E RESIDENTIAL | -                           | 20 CU                      | 5.0 WEL 6.71 FROM HSE FRONT      | 2.1 W C/S      | RECONNECT SERVICE |
| 155 NEWMAN AV E RESIDENTIAL | -                           | 20 CU                      | 4.72 WEL HSE 6.95 FROM HSE FRONT | -              | RECONNECT SERVICE |
| 156 NEWMAN AV E RESIDENTIAL | -                           | 20 CU                      | 3.96 WEL HSE 7.01 FROM HSE FRONT | -              | RECONNECT SERVICE |
| 157 NEWMAN AV E RESIDENTIAL | -                           | 20 CU                      | 3.5 WEL 5.0 EWL                  | -              | RECONNECT SERVICE |
| 160 NEWMAN AV E RESIDENTIAL | -                           | 20 CU                      | 3.36 EWL HSE 7.01 FROM HSE FRONT | -              | RECONNECT SERVICE |
| 163 NEWMAN AV E RESIDENTIAL | -                           | 20 CU                      | 1.22 EWL HSE 8.08 FROM HSE FRONT | -              | RECONNECT SERVICE |

NOTE: CHAINAGES SHOWN ARE ALONG N. P/L OF NEWMAN AV E

NEWMAN AVENUE EAST



NOTE: ALL GATE VALVES TO BE INSTALLED CLOCKWISE TO CLOSE



**WARNING**  
IF POWER EQUIPMENT OR EXPLOSIVES ARE TO BE USED FOR EXCAVATION ON THIS PROJECT THE CONTRACTOR MUST:  
1) NOTIFY THE GAS COMPANY OF THE PROPOSED LOCATION OF EXCAVATION.  
2) TAKE PRECAUTION TO AVOID DAMAGE TO GAS COMPANY INSTALLATIONS.  
SEE PROVINCIAL REGULATION 21072 FOR DETAILS

**LOCATION APPROVED**  
UNDERGROUND STRUCTURES  
SUPV. U/G STRUCTURES COMMITTEE DATE  
NOTE:  
LOCATION OF UNDERGROUND STRUCTURES AS SHOWN ARE BASED ON THE BEST INFORMATION AVAILABLE BUT NO GUARANTEE IS GIVEN THAT ALL EXISTING UTILITIES ARE SHOWN OR THAT THE GIVEN LOCATIONS ARE EXACT. CONFIRMATION OF EXISTENCE AND EXACT LOCATION OF ALL SERVICES MUST BE OBTAINED FROM THE INDIVIDUAL UTILITIES BEFORE PROCEEDING WITH CONSTRUCTION.

|  |   |          |      |
|--|---|----------|------|
| B.M. 10-028<br>ELEV. 233.050m            | 879482 - S.E. Cor. McMeane Ave. W. & Winona St., Tbt. on top of 0.05 m sq x 2.4 m iron tube, 3.6 m W. of E.L. Winona St. & 5.0 m N. of S.L. McMeane Ave. W. |          |      |
| CONSTRUCTION COMPLETION DATE: YYYY MM DD |   |          |      |
| 0  | ISSUED FOR TENDER   | 15/03/25 | J.C. |
| NO.                                      | REVISIONS   | DATE     | BY   |

DESIGNED BY: J.H. CHECKED BY: J.C.  
DRAWN BY: J.H. APPROVED BY: J.C.  
SCALE: HORIZONTAL 1:250 VERTICAL 1:50  
DATE: 2015 03 25  
PLOT DATE: 2015 03 25

ENGINEER'S SEAL  
CONSULTANT DRAWING NUMBER: C-214

**THE CITY OF WINNIPEG**  
WATER AND WASTE DEPARTMENT  
ENGINEERING DIVISION  
2015 WATERMAIN RENEWALS  
CONTRACT 2  
NEWMAN AVENUE EAST  
110 WWL OF WABASHA STREET TO WABASHA STREET

SHEET 15 OF 17  
CITY DRAWING NUMBER: D-13946