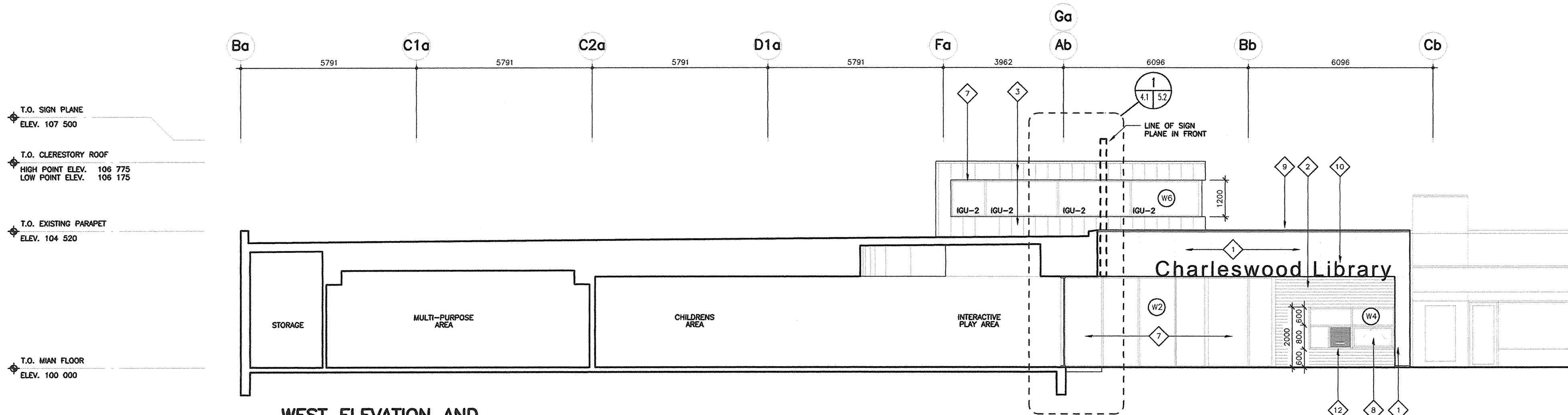
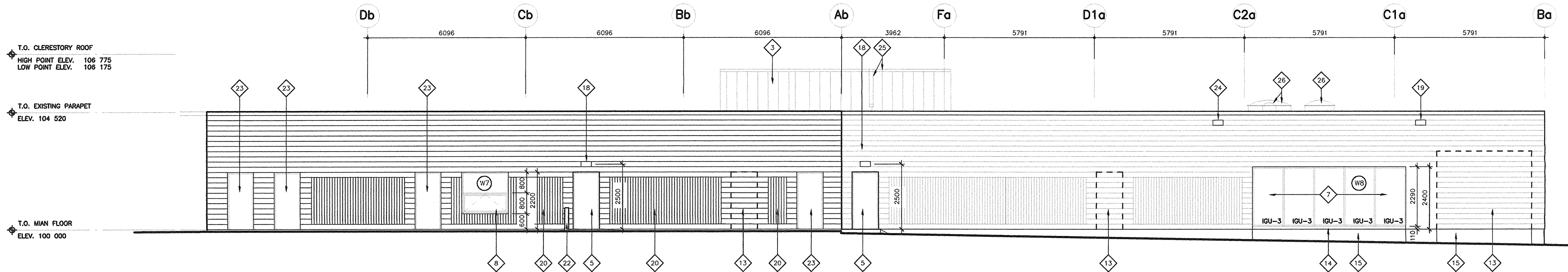


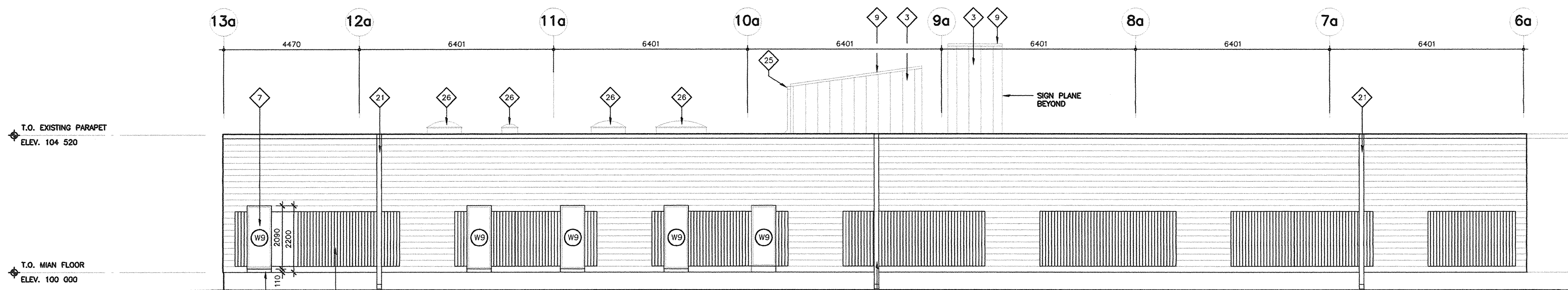
1 NORTH ELEVATION  
SCALE 1 : 100



2 WEST ELEVATION AND BUILDING SECTION B  
SCALE 1 : 100



3 WEST ELEVATION  
SCALE 1 : 100



4 SOUTH ELEVATION  
SCALE 1 : 100

## EXTERIOR MATERIAL LEGEND

- 1 PREFINISHED PHENOLIC CORE PANEL
- 2 RECLAIMED WOOD SIDING
- 3 PREFINISHED METAL STANDING SEAM PANEL
- 4 CEMENT PARING
- 5 NEW INSULATED HOLLOW METAL FRAMES AND DOOR - PTD.
- 6 PREFINISHED ALUMINUM INSULATED ENTRANCE SLIDING DOOR - COLOR TO MATCH PHENOLIC CORE PANEL
- 7 PREFINISHED ALUMINUM STOREFRONT FRAMING - COLOR TO MATCH PHENOLIC CORE PANEL
- 8 PREFINISHED ALUMINUM WINDOW FRAMING - COLOR TO MATCH PHENOLIC CORE PANEL
- 9 PREFINISHED STEEL TRIM
- 10 BUILDING SIGNAGE - APPROX. 500mm HIGH INDIVIDUAL CUT ALUMINUM LETTERS. PART OF CASH ALLOWANCE.
- 11 ILLUMINATED 'HALO' BUILDING SIGNAGE - CITY OF WINNIPEG LOGO, APPROX. 1200x1200. PART OF CASH ALLOWANCE.
- 12 24H SELF CHECK-IN UNIT FACE. (OFF) INTEGRATE WITHIN ALUMINUM WINDOW FRAMING.
- 13 NEW CONCRETE BLOCK INFILL TO MATCH EXISTING - PTD.
- 14 PREFINISHED ALUMINUM CLOSURE PANEL TO MATCH COLOR AND FINISH OF ALUMINUM WINDOW FRAMING.
- 15 NEW CONCRETE GRADE BEAM
- 16 EXISTING STEEL FLASHING TO REMAIN
- 17 EXISTING DOOR TO REMAIN
- 18 NEW LIGHT FIXTURE. SEE ELECTRICAL.
- 19 RELOCATED LIGHT FIXTURE. SEE ELECTRICAL.
- 20 EXISTING STRIATED CONCRETE BLOCK
- 21 EXISTING RAIN WATER LEADER
- 22 PTD. STEEL BOLLARD. SEE AP0.1
- 23 EXISTING DOOR AND FRAME TO REMAIN.
- 24 EXISTING LIGHT FIXTURE
- 25 PREFINISHED RVL AND GUTTER,
- 26 NEW SKYLIGHTS. SEE 7/AP3.

## GLAZING LEGEND

ALL EXTERIOR GLAZING TO BE INSULATING GLAZING UNITS (IGU-1) UNLESS OTHERWISE NOTED

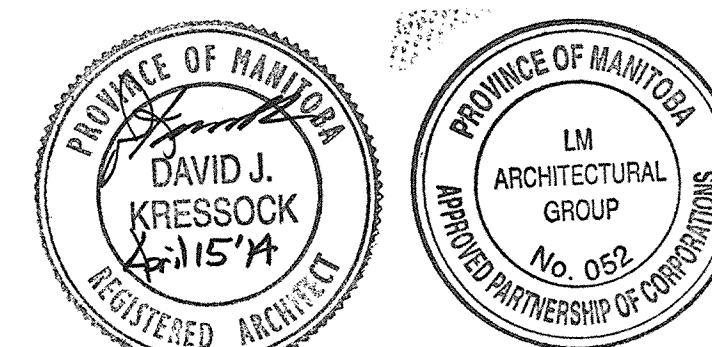
IGU-1 INSULATED GLAZING UNIT TYPE 1 - CLEAR, SAFETY

IGU-2 INSULATED GLAZING UNIT TYPE 2 - CLEAR

IGU-3 INSULATED GLAZING UNIT TYPE 3 - TRANSLUCENT

No.	Date	Issue / Revision	By
1	APR. 15, 2014	ISSUED FOR CONSTRUCTION	

Drawn By: c/Wg  
Printing Date: 4/15/2014



Drawings and specifications, as instruments of service are the property of the architects, the copyright in the same being reserved to them. No reproduction may be made without the permission of the architects, and when made, must bear their names. All prints to be returned.

The contractor is to verify dimensions and data noted herein with conditions on the site and is held responsible for reporting any discrepancy to the architects for adjustment.

**LM** LM Architectural Group  
500-136 Market Ave  
Winnipeg, Manitoba, Canada R3B 0P4  
t: (204) 942-0681 f: (204) 943-8676  
www.lm-architects.com

**Winnipeg**  
**NEW CHARLESWOOD LIBRARY**  
**LEASED ACCOMMODATIONS**  
4910 ROBLIN BLVD. WINNIPEG, MANITOBA

Exterior Elevations and  
Building Sections