

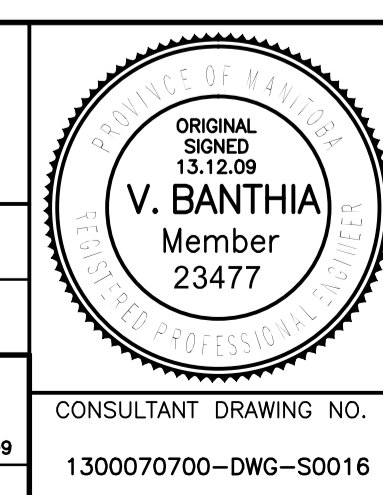
**NOTE:**  
LOCATE REINFORCING SPLICES NOT INDICATED ON THE DRAWINGS AT POINTS OF MINIMUM STRESS. LOCATIONS OF SPLICES TO BE APPROVED BY CONTRACT ADMINISTRATOR.



B.M. ELEV.	F.B.	DATE	BY
0	ISSUED FOR TENDER	13.12.09	V.B.
	NO. REVISIONS	DATE	BY

**TETRA TECH**

DESIGNED BY: D.M.	CHECKED BY: V.B.
DRAWN BY: G.I.	APPROVED BY: E.F.S.
HOR. SCALE: AS NOTED	RELEASED FOR CONSTRUCTION DATE: 13.12.09
VERTICAL: AS NOTED	ORIGINAL SIGNED: 13.12.09
DATE: 13.07.18	CONSULTANT DRAWING NO.: 1300070700-DWG-S0016



**THE CITY OF WINNIPEG**  
PUBLIC WORKS DEPARTMENT  
ENGINEERING DIVISION

**PORTAGE AVENUE TWIN BRIDGES**  
OVER STURGEON CREEK  
REHABILITATION AND RELATED WORKS

**PHASE 1 CONSTRUCTION**  
NORTH STRUCTURE  
REINFORCING DETAILS

CITY DRAWING NUMBER: B178-14-016	SHEET: 16 OF 70
16	