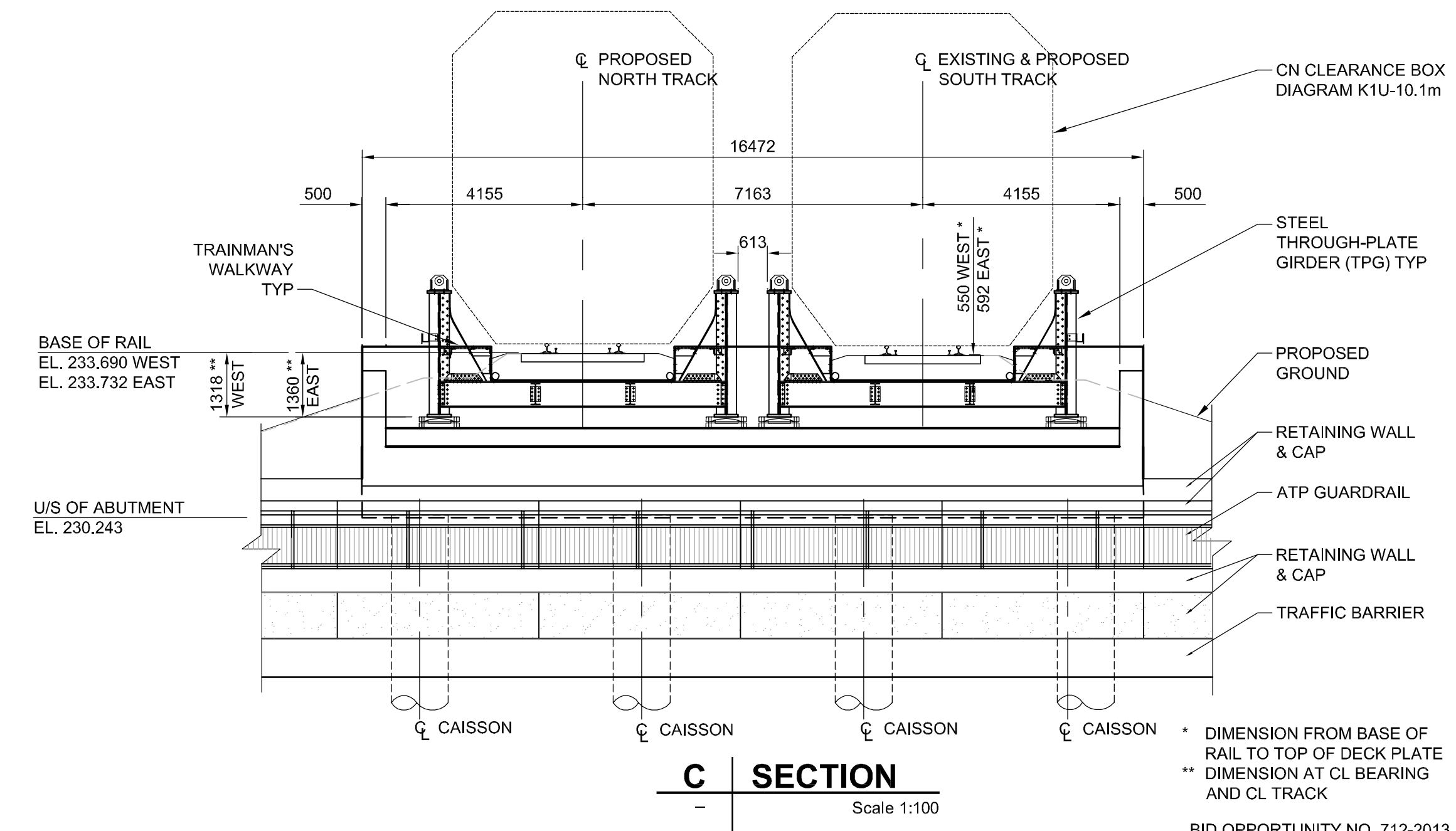
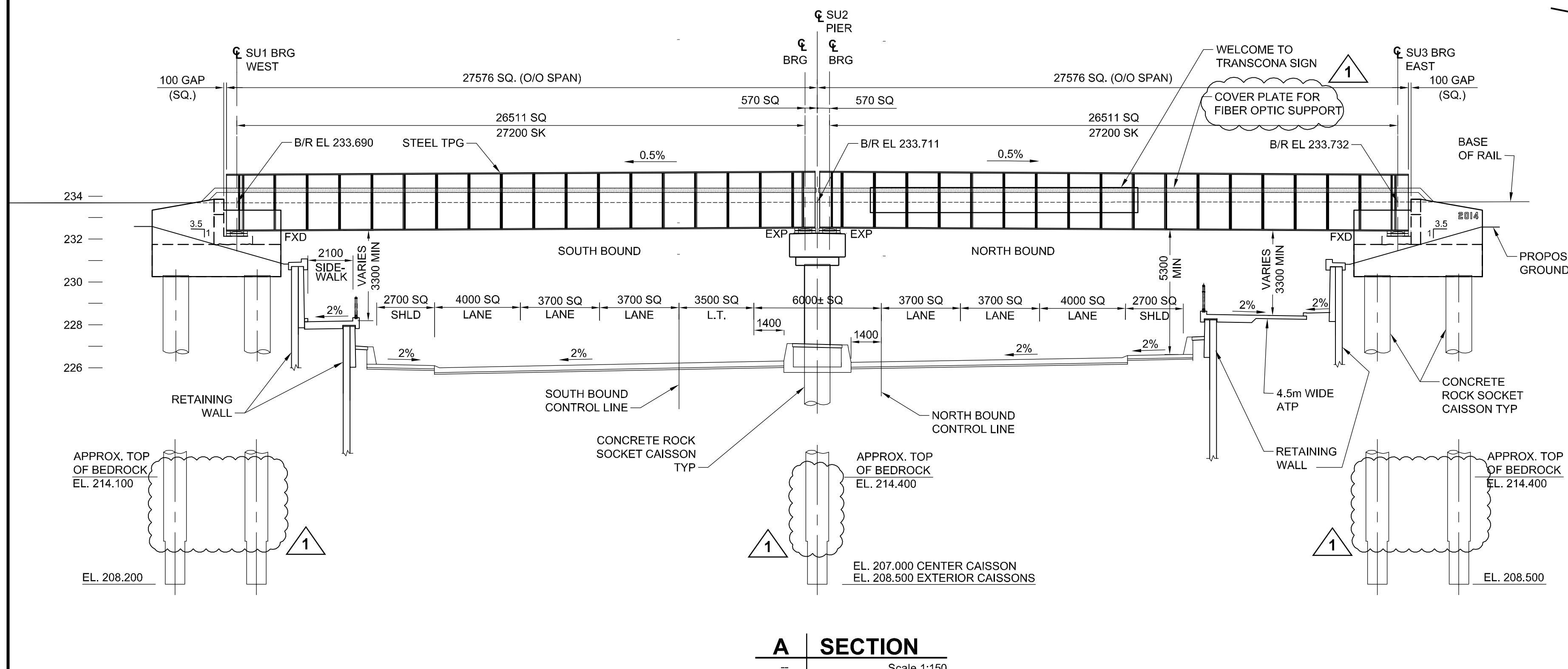
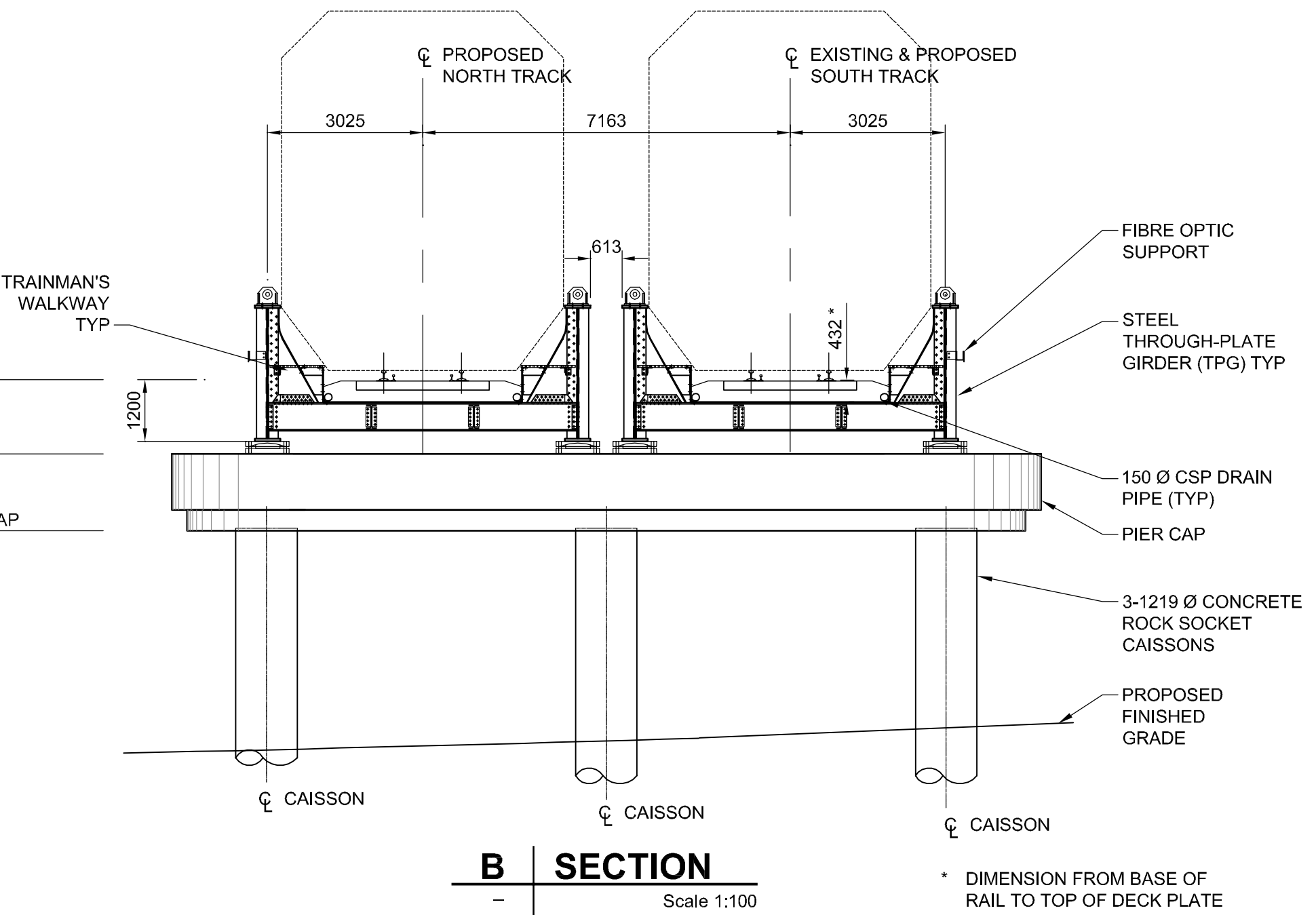
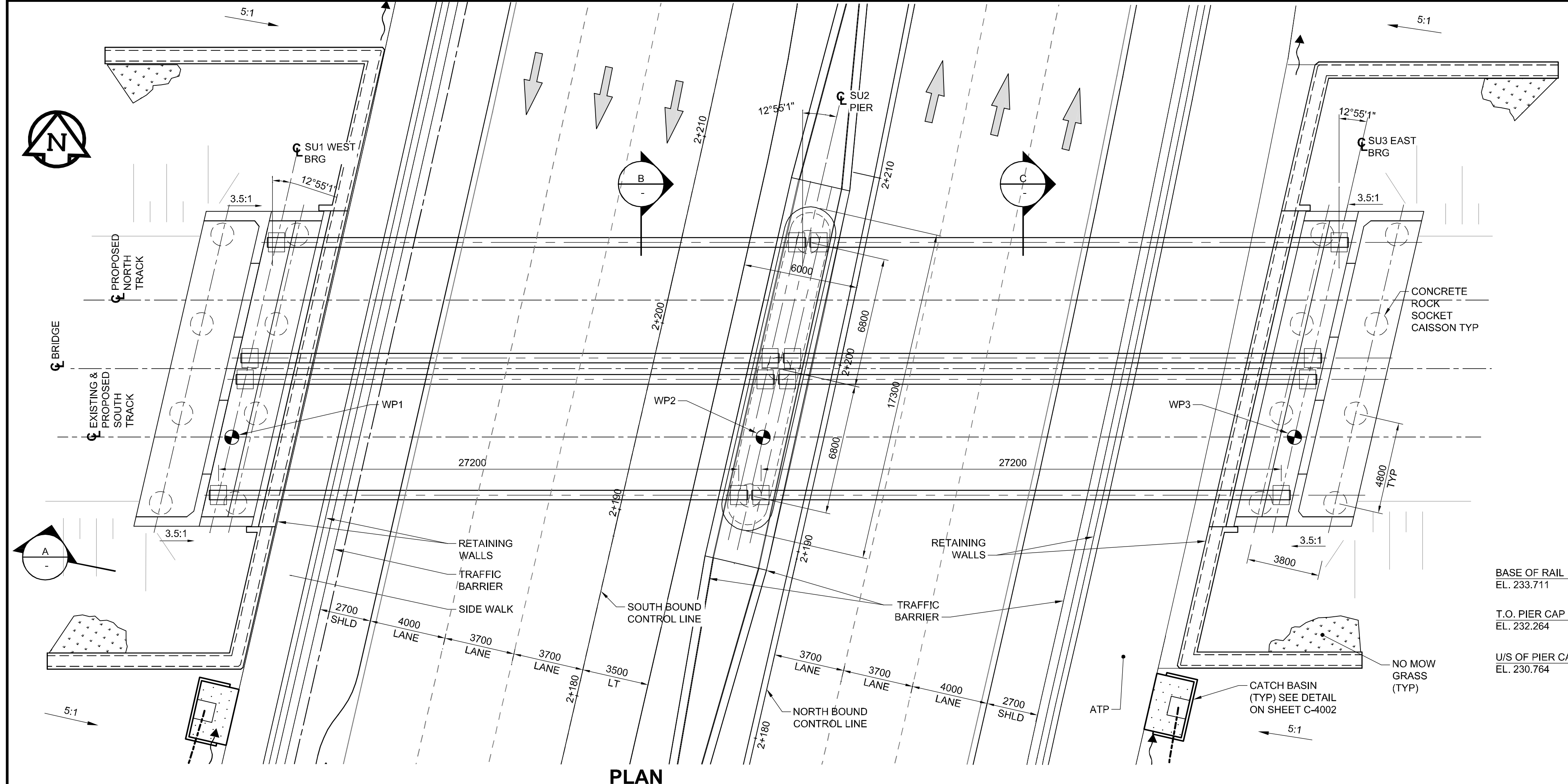


NOTES:
FOR GENERAL NOTES SEE SHEET CS-0001



WORKING POINT (WP) TABLE

	NORTHING	EASTING
WP1	5527985.902	641804.221
WP2	5527986.625	641831.996
WP3	5527987.348	641859.771



LOCATION APPROVED UNDERGROUND STRUCTURES

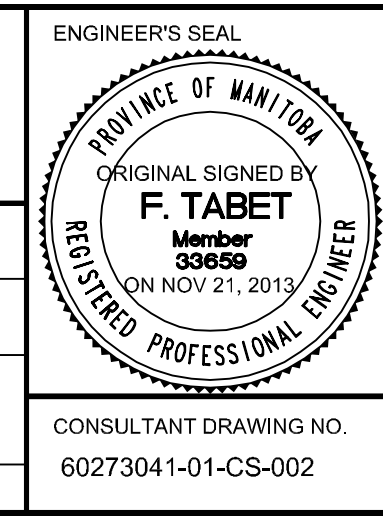
SUPV. U/G STRUCTURES COMMITTEE DATE

NOTE:
LOCATION OF UNDERGROUND STRUCTURES AS SHOWN ARE BASED ON THE BEST INFORMATION AVAILABLE, BUT NO GUARANTEE IS GIVEN THAT ALL EXISTING UTILITIES ARE SHOWN OR THAT THE GIVEN LOCATIONS ARE EXACT. CONFIRMATION OF EXISTENCE AND EXACT LOCATION OF ALL SERVICES MUST BE OBTAINED FROM THE INDIVIDUAL UTILITIES BEFORE PROCEEDING WITH CONSTRUCTION.

B.M. ELEV.	NO.	REVISIONS	DATE	BY
	1	ISSUED FOR ADDENDUM	2014/01/06	DJH
	0	ISSUED FOR TENDER	2013/11/21	KC

AECOM

DESIGNED BY: FT
CHECKED BY: EBL
DRAWN BY: DJH
APPROVED BY: EBL
HOR. SCALE: AS NOTED
VERTICAL: AS NOTED
RELEASED FOR CONSTRUCTION BY:
DATE: 2013-06-04



THE CITY OF WINNIPEG PUBLIC WORKS DEPARTMENT

PLESSIS ROAD TWINNING AND GRADE SEPARATION AT CN REDDITT SUBDIVISION CONTRACT 3

CITY DRAWING NUMBER U238-2014-2002
SHEET 02 OF 37

CONSULTANT DRAWING NO. 60273041-01-CS-002

GENERAL ARRANGEMENT

CS-0002

A1 - 841694
2014-01-02
J:\COMMON\DEFAULT.CTB
P:\60273041\000-CADD\02-SHEETS\CS\60273041-01-CS-002.DWG