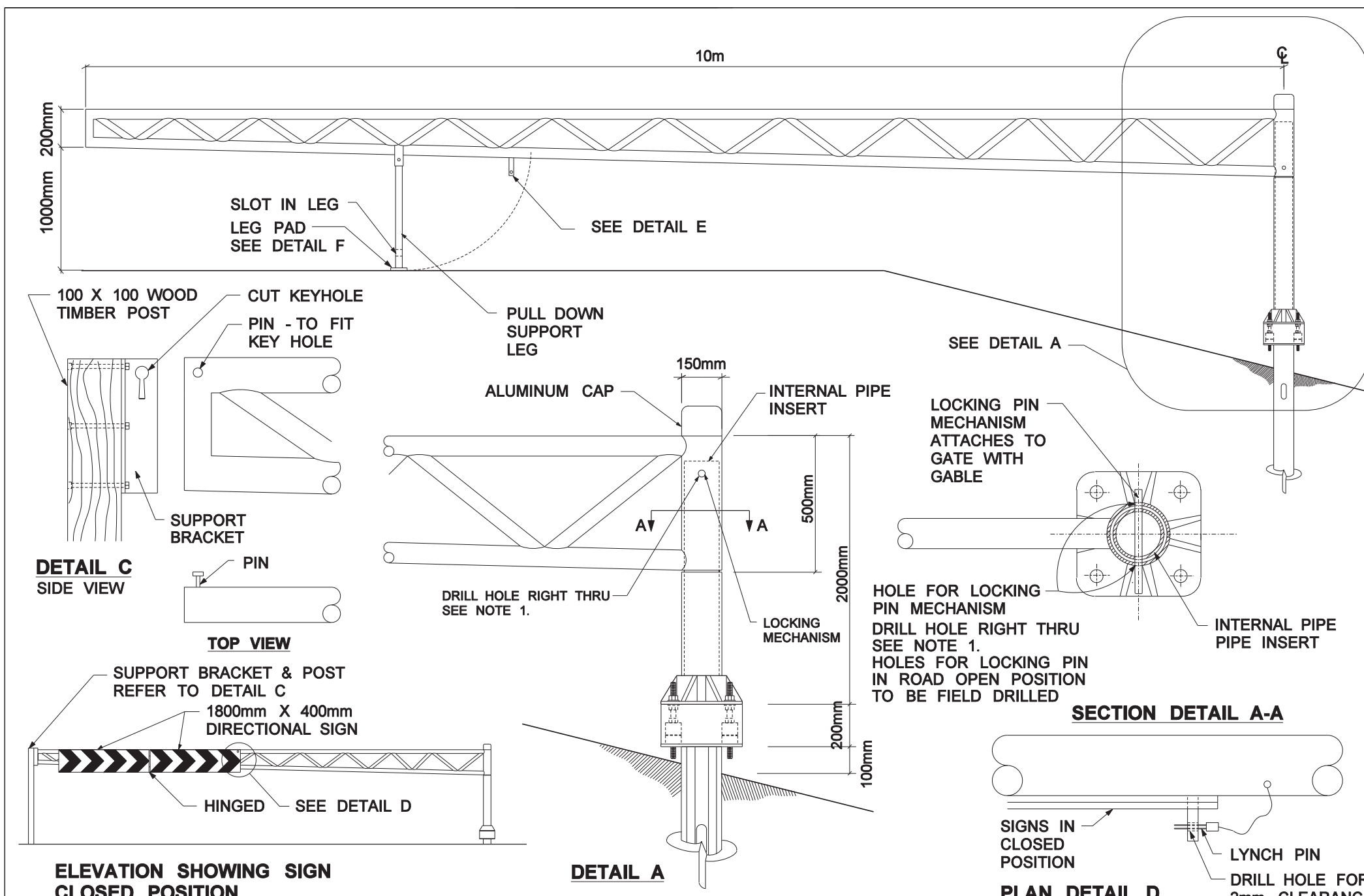
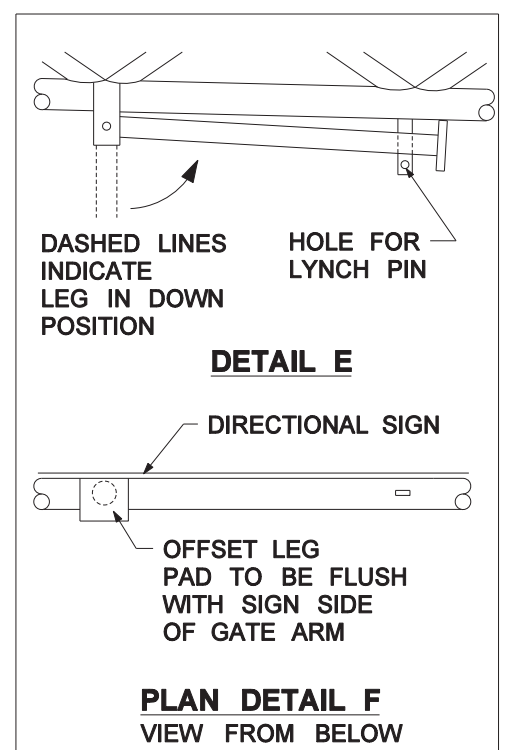


APPENDIX A

DETAILS



- N O T E S**
- NOTE 1:
DRILL ONLY ONE
HOLE IN INNER
LINER AT 90°
AT ROAD CLOSED
POSITION
- NOTE 2:
HEAT SINK TUBING
ON ALL CABLE SWAGES
- NOTE 3:
LYNCH PINS TO BE
ATTACHED TO GATE
BY CABLE



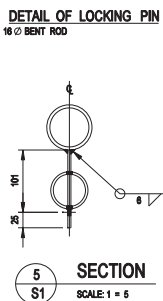
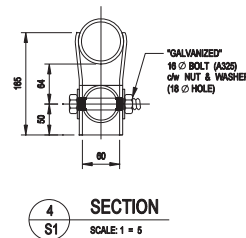
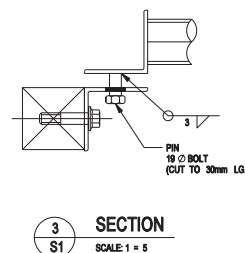
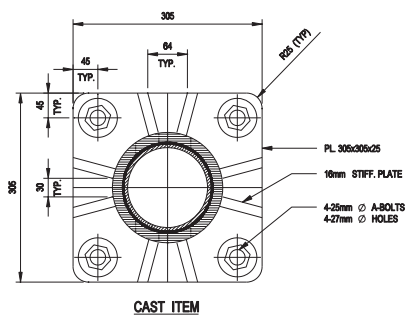
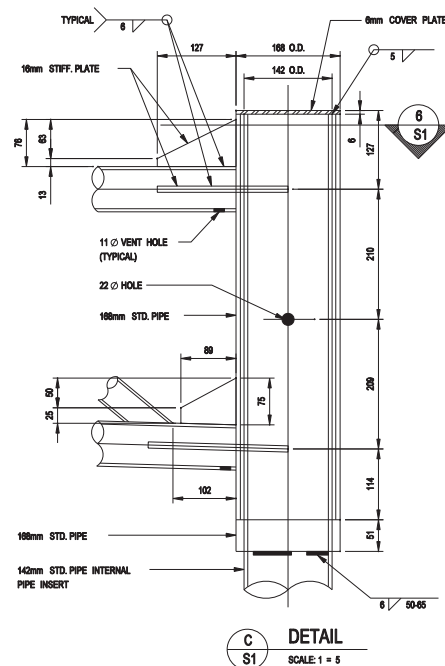
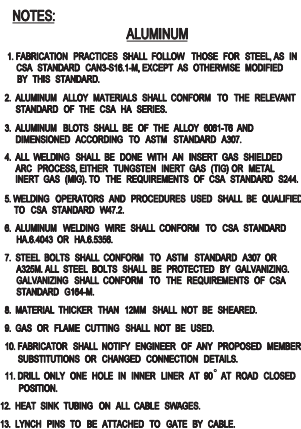
Manitoba
Transportation and
Government Services
TRAFFIC ENGINEERING




**SWING GATE FOR INCLEMENT WEATHER
ROAD CLOSURE
PORTAGE LA PRAIRIE**

GATES B1 & B2

FILE: MISC.
PROJECT: TE-061
DATE: SEPT 2001
SCALE: N.T.S.



DOWN BY AA	DATE OCT/2002	SEQUENCE NO. <div style="font-size: 2em; text-align: center;">S1</div> <div style="text-align: right;">  </div>
CHECKED BY WJ	FILE NO. 02-068	

RIGHT SHOULDER WORK

S(km/h)	A(m)	L(m)	B(m)	D(m)
50	50	60	35	15
60	50	90	45	15
70	75	120	50	15
80	100	175	55	15
90	100	200	65	20
100	150	250	70	20

WHERE:

S = SPEED LIMIT

A = SPACING BETWEEN SIGNS

L = LENGTH OF TAPER (SEE POLICY 900-B-12
 FOR CHANNELIZATION DEVICE)

B = LENGTH OF LONGITUDINAL BUFFER SPACE

D = SPACING BETWEEN DELINEATION DEVICES

