

2
2' 7'

CONCRETE COLLAR AROUND MANHOLE IN UNIT
PAVER AS PER ENLARGEMENT 2

2
2' 7'

ACCESS TO HEAD OF BUS STOP AS PER
ENLARGEMENT 2

3
3' 6'

BUS STOP FLAG FOUNDATION
AS PER DETAIL

1.70'

1.50'

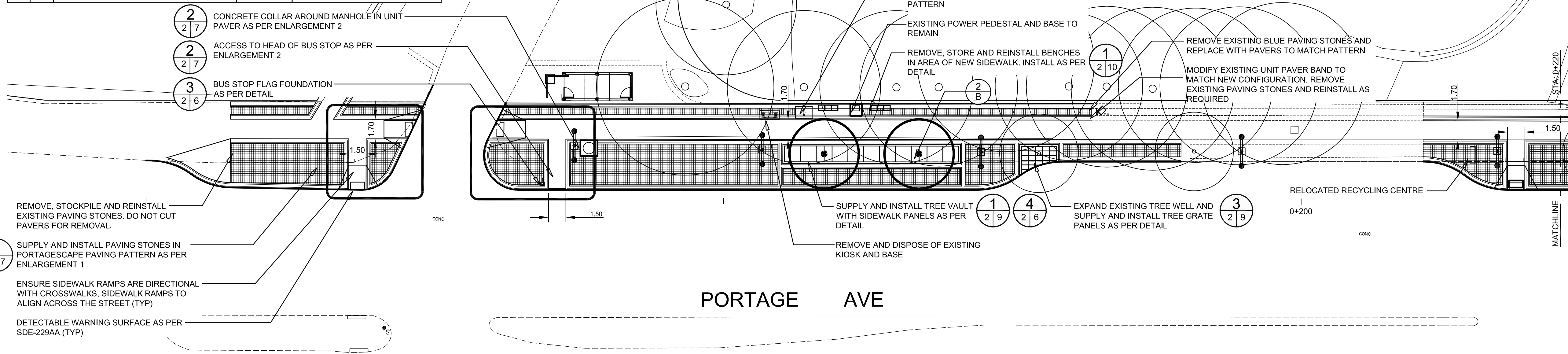
REMOVE, STOCKPILE AND REINSTALL
EXISTING PAVING STONES. DO NOT CUT
PAVERS FOR REMOVAL.

7

SUPPLY AND INSTALL PAVING STONES IN
PORTAGESCAPE PAVING PATTERN AS PER
ENLARGEMENT 1

ENSURE SIDEWALK RAMPS ARE DIRECTIONAL
WITH CROSSWALKS. SIDEWALK RAMPS TO
ALIGN ACROSS THE STREET (TYP)

DETECTABLE WARNING SURFACE AS PER
SDE-229AA (TYP)

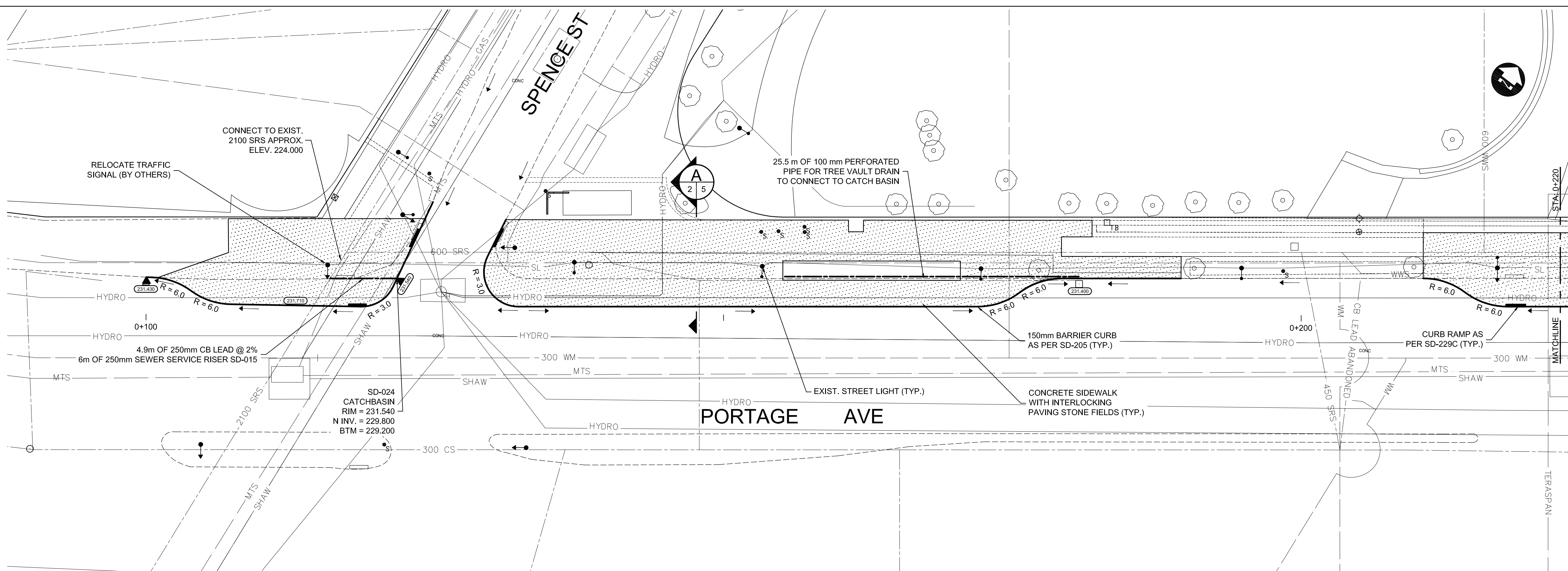


- ## CONSTRUCTION NOTES FOR ROADWAY:
1. STATIONING IN WESTBOUND CURB LANE OF PORTAGE AVENUE.
 2. FINAL CURB HEIGHT TYPICALLY 150 mm OR AS DIRECTED BY CONTRACT.
 3. ALL DIMENSIONS ARE TO BACK OF CURB.
 4. ISOLATE MISCELLANEOUS ITEMS IN NEW CONCRETE WORKS AS PER SD-228C.
 5. LEGAL PLAN AND UNDERGROUND INFORMATION FROM CITY OF WINNIPEG LBIS.
 6. TRAFFIC SIGNAL POLES, CONTROLLERS AND UNDERGROUND APPURTENANCES IN PROJECT AREA TO BE RELOCATED BY OTHERS.
 7. CONTRACTOR TO TAKE PRECAUTIONARY STEPS TO AVOID DAMAGE FROM CONSTRUCTION ACTIVITIES TO TREES WITHIN THE LIMITS OF CONSTRUCTION.
 8. LOCATION OF EXISTING UNDERGROUND SERVICES TO BE CONFIRMED IN THE FIELD BY THE CONTRACTOR.
 9. CATCHBASIN LEAD PIPE TO BE INSTALLED AT MIN 2.0% SLOPE
 10. PLANE OR REMOVE EXISTING ASPHALT OVERLAY WHEN PINNING NEW CURB ON UNDERLYING CONCRETE PAVEMENT
 11. EXISTING PAVING STONES SHALL BE SALVAGED FOR REINSTALLATION WHEREVER POSSIBLE. SUPPLY AND INSTALL NEW PAVING STONES ONLY AFTER SALVAGED SUPPLY IS EXHAUSTED.

WHOLE NUMBERS INDICATE MILLIMETRES
DECIMALIZED NUMBERS INDICATE METRES

IF POWER EQUIPMENT OR EXPLOSIVES ARE TO BE USED FOR EXCAVATION ON THIS PROJECT THE CONTRACTOR MUST:

1. NOTIFY THE GAS COMPANY OF THE PROPOSED LOCATION OF EXCAVATION.
2. TAKE PRECAUTION TO AVOID DAMAGE TO GAS COMPANY INSTALLATIONS SEE PROVINCIAL REGULATION 210/72 FOR DETAILS.


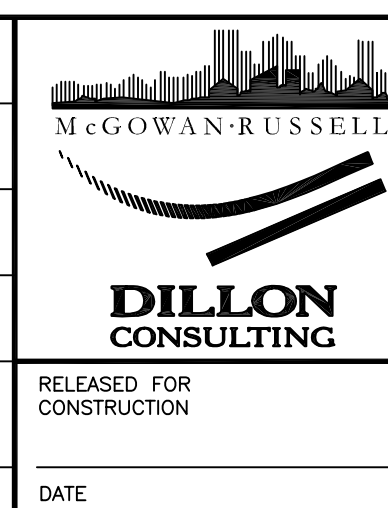


150 MM	WATERMAIN	150 MM	HYDRO	HYDRO	HYDRO	150 mm W.M.	WATERMAIN	150 mm W.M.
	HYDRANT		MTS	M.T.S.			HYDRANT	
	VALVE			CONCRETE			VALVE	
300 LDS	LAND DRAINAGE SEWER	300 LDS		ASPHALT		300 mm L.D.S.	LAND DRAINAGE SEWER	300 mm L.D.S.
250 WWS	WASTE WATER SEWER	250 WWS		PLANING		250 mm W.W.S.	WASTE WATER SEWER	250 mm W.W.S.
	MANHOLE			SIDEWALK			PROFILE	
	CATCH BASIN			PAVING STONES			NORTH/WEST GUTTER	
	CURB INLET			PARTIAL DEPTH REPAIR			SOUTH/EAST GUTTER	
	JUNCTIONS			PROPERTY LINE			NORTH/WEST T/LANE	
	CULVERT			SURVEY BAR			SOUTH/EAST T/LANE	
100 GAS	GAS	100 GAS		PARAPLEGIC RAMP				
EXISTING	LEGEND—PLAN	PROPOSED	EXISTING	LEGEND—PLAN	PROPOSED	EXISTING	LEGEND—PROFILE	PROPOSED

<h1>UNDERGROUND STRUCTURES</h1>	
SUPV. U/G STRUCTURES COMMITTEE	DATE
NOTE: LOCATION OF UNDERGROUND STRUCTURES AS SHOWN ARE BASED ON THE BEST INFORMATION AVAILABLE. BUT NO GUARANTEE IS GIVEN THAT ALL EXISTING UTILITIES ARE SHOWN OR THAT THE GIVEN LOCATIONS ARE EXACT. CONFIRMATION OF EXISTENCE AND EXACT LOCATION OF ALL SERVICES MUST BE OBTAINED FROM THE INDIVIDUAL UTILITIES BEFORE PROCEEDING WITH CONSTRUCTION.	

[illegible]

DESIGNED BY	DBW / JW
DRAWN BY	PMW
CHECKED BY	
APPROVED BY	
HOR. SCALE	1: 200
VERTICAL	
DATE	



ENGINEER'S SEAL

PROVINCE OF MANITOBA

ORIGINAL
STAMPED BY

D.B. WIEBE

28/06/10

Member
22480

REGISTERED PROFESSIONAL ENGINEER

CONSULTANT PROJECT NUMBER

09-1545

