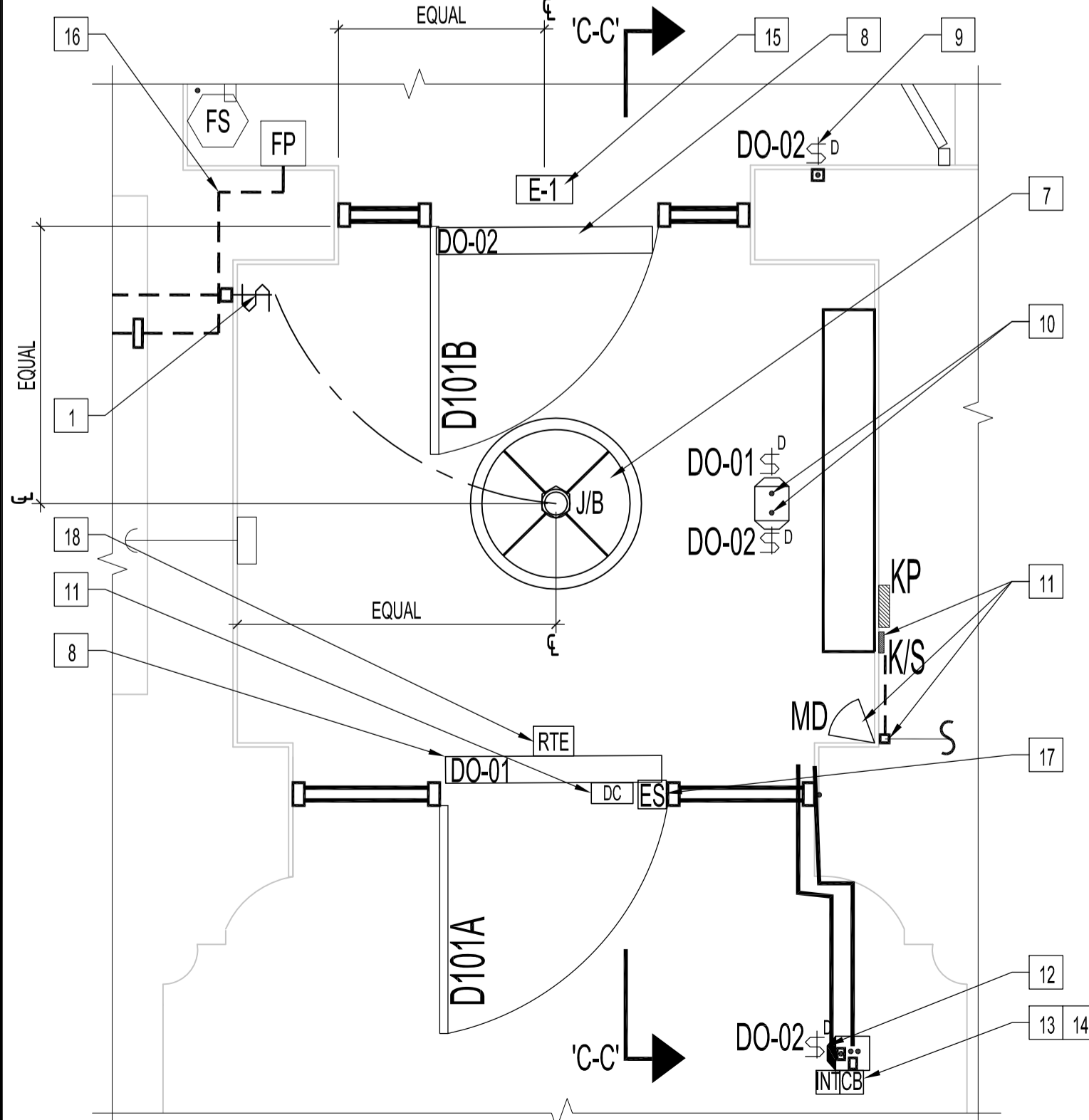


PARTIAL MAIN FLOOR PLAN - ELECTRICAL RENOVATION & REFLECTED CEILING
SCALE: 1/4"=1'-0"

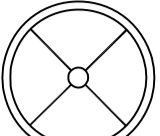
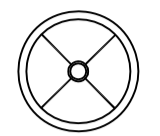

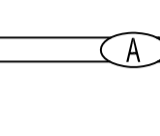
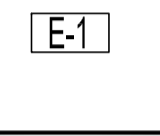


1 PARTIAL MAIN FLOOR PLAN - ENLARGED VIEW
E3 SCALE: 1/2"=1'-0"

PARTIAL MAIN FLOOR ELECTRICAL RENOVATION NOTES



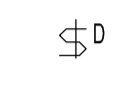

SUPPLY & INSTALL NEW UNLESS OTHERWISE NOTED.

- 1
- CONNECT FROM EXISTING OR NEW POWER SOURCE TO NEW LIGHT KEY SWITCH. PROVIDE STAINLESS STEEL COVER PLATE. CONTRACTOR TO SUPPLY (2) LIGHT SWITCH KEYS. MOUNT SWITCH 5'-0" FROM CENTER OF DEVICE BOX TO FINISHED FLOOR.
- 2
- INCLINE LIFT AUDIO-VISUAL ALERT. RECESS MOUNT DEVICE BOX WITHIN WALL, 9'-0" FROM FINISHED LANDING. COORDINATE WIRING BY-OTHERS TO ACHIEVE A CONCEALED WIRING SOLUTION.
- 3
- LOWER CALL STATION BOLLARD, SEE ARCHITECTURAL DRAWING. COORDINATE WIRING BY-OTHERS TO ACHIEVE A CONCEALED WIRING SOLUTION.
- 4
- NEW 2- HEAD EMERGENCY LIGHTS. MOUNT TO EXISTING OCTAGON BOXES & CONNECT TO EXISTING POWER SOURCE.
- 5
- UPPER CALL STATION BOLLARD, SEE ARCHITECTURAL DRAWING. COORDINATE WIRING BY-OTHERS TO ACHIEVE A CONCEALED WIRING SOLUTION.
- 6
- DEDICATED 20 AMP CIRCUIT, E40, TO WHEELCHAIR INCLINED PLATFORM LIFT. FIELD WIRING TO INCLINE PLATFORM LIFT BY-OTHERS, REFER TO NOTES ON DRAWING E1.
- 7
- RECESS OCTAGON BOXES FOR EACH NEW CEILING MOUNTED LIGHT FIXTURE. SPACE EQUALLY & CENTERED WITHIN EXISTING CEILING SPACES. CONNECT WIRING TO EXISTING & NEW POWER SOURCES. (TYPICAL). ALSO SEE LIGHT FIXTURE SCHEDULE.
- 8
- AUTOMATIC POWER DOOR OPERATORS CONNECTED TO CIRCUIT E41.
- 9
- CONCEAL WIRING FOR VERTICAL AUTOMATIC DOOR ACTIVATION SWITCH TO AUTO DOOR OPERATOR. MOUNT ON WALL.
- 10
- RECESS DEVICE BOXES WITHIN BOLLARD POST. CONCEAL EMT & WIRING & FROM VERTICAL ACTIVATION COLUMN TO AUTO DOOR OPERATOR.
- 11
- EXISTING SURFACE MOUNT SECURITY KEY SWITCH SHALL BE FLUSH MOUNTED WITH WIRING CONCEALED IN WALL. NEW WIRING TO ELECTRIC STRIKE, DOOR CONTACTS, REQUEST-TO EXIT, & AUTOMATIC DOOR OPERATOR SHALL ALSO BE CONCEALED WITHIN DOOR JAMBS USING WINDOW GLAZING MOULDING. SUPPLY & INSTALL TO ACHIEVE. EXISTING SECURITY PAD TO REMAIN.
- 12
- RECESS MOUNT WEATHERPROOF DEVICE BOX WITHIN NEW BOLLARD POST. EMT & WIRING FROM VERTICAL ACTIVATION COLUMN TO AUTO DOOR OPERATOR. SUPPLY & INSTALL (2) 1/2" EMT TO RUN FLUSH ON-TOP OF CONCRETE ENTRY & ALONG BUILDING CORNERS, THROUGH BASE OF DOOR SIDELIGHT PANEL & ENTER IMMEDIATELY INTO BASEMENT TO ACHIEVE A CLEN- MINIMIZE INTRUSIVENESS VIEW.
- 13
- RECESS WEATHERPROOF DEVICE BOX & CALL/DOOR BUZZER & INTERCOM WITHIN BOLLARD POST. RUN & CONNECT WIRING FROM DEVICE BOX TO EXISTING FRONT RECEPTIONIST DESK SWITCH & INTERCOM CONTROL PANEL.
- 14
- RECESS WEATHERPROOF DEVICE BOX WITHIN BOLLARD POST. PROVIDE COVER PLATE TO MATCH BOLLARD. RUN CONDUIT FROM DEVICE BOX TO POWER BOX IN BASEMENT FOR FUTURE CARD ACCESS CONNECTIONS.
- 15
- SELF-LUMINOUS EXIT SIGN WITH MOUNTING KIT. MOUNT CENTERED ON-TOP OF NEW DOOR JAMB.
- 16
- CONCEALED FLEX FIRE ALARM WIRING FROM EAST, MAIN FLOOR WASHROOM JUNCTION BOX TO FOYER PULL STATION. RUN FLEX WIRING WITHIN PLASTER WALLS BACK TO FIRE ALARM PULL STATION. CONTRACTOR TO TEST SYSTEM AS PER REGULATING CODES.
- 17
- ELECTRIC DOOR STRIKE. CONNECT WIRING FROM (D101A) TO RECEPTION DESK CONTROL SWITCH. DOOR STRIKE MODEL TO SUIT WITH DOOR SCHEDULE. SEE ARCHITECTURAL DRAWING A2.
- 18
- REQUEST-TO-EXIT SENSOR. CONCEAL WIRING & MOUNT TO NEW DOOR JAMB.
- 19
- NEW WALL MOUNTED CEILING LIGHT FIXTURE CONNECTED TO EXISTING POWER SOURCE. SEE LIGHT FIXTURE SCHEDULE.
- 20
- WIRE T O ELECTRIC STRIKE, ES, FOR REMOTE RELEASE AND ENERGIZES POWER DOOR OPERATOR - BUT DOOR DOES NOT OPEN AUTOMATICALLY UNTIL AUTOMATIC DOOR OPERATOR ACTIVATING SWITCH OR DOOR IS PHYSICALLY OPENED.

LIGHT FIXTURE SCHEDULE SUPPLY & INSTALL NEW UNLESS OTHERWISE NOTED.					
TYPE	QUANTITY	MANUFACTURER	CATALOGUE No.	LAMP	DESCRIPTION
	3	MANCHESTER	G-10124-Q2-S-Y-G-5A-50	8 CFQ 2 6	8 - LIGHT, 38" DIAMETER, PENDANT LENGTH: 50", SATIN WHITE BOWL, OIL RUBBED BRONZE FINISH, FLAT CEILING MOUNT.
	1	MANCHESTER	G-10123-Q2-S-Y-G-5A-50	4 CFQ 1 3	4 - LIGHT, 30" DIAMETER, PENDANT LENGTH: 50", SATIN WHITE BOWL, OIL RUBBED BRONZE FINISH, FLAT CEILING MOUNT.
	2	DUAL-LITE	CPRDW0605	MR16	INDOOR INJECTION MOLDED THERMOPLASTIC EMERGENCY REMOTE 2 HEAD FIXTURE. VOLTAGE TO SUIT EXISTING. FINISH WHITE.
	2	VISA LIGHTING	CV 2030 AVATAR - METRO W/ DIFFUSE OPTIC	FS28, 28W, T-5, MINI BI-PIN BASE	PTD. PAINTED (BRONZE FINISH) INTEGRAL EMERGENCY BATTERY PACK. CONTRACTOR TO VERIFY VOLTAGE. MOUNT FIXTURE HORIZONTALLY.
	1	DUAL-LITE	SLM SERIES		8 1/4" H X 12 3/4" W X 1 7/8" D, SINGLE FACE SELF-LUMINOUS EXIT SIGN, ALUMINUM FRAME WITH MOUNTING PLATE SLM05. NO DIRECTION ARROWS.

EXISTING PANELBOARD 'E' (BASEMENT)					
208/120V/3Ø		42-POLE		BUS RATING 225A.	
DEMAND LOAD	CONCTD LOAD	CIRCUIT DESCRIPTION	CIRCUIT NO.	CIRCUIT DESCRIPTION	CONCTD LOAD
		CP-1 PANEL MECH. CONTR.	1	FLOOR PLUGS	
		UH-3	2	N/EAST CORNER ON 1ST FLOOR	
		UH-2	3	FLOOR PLUG CENTER	
		UH-1 FC-EAST	4	EAST OF MAIN FLOOR	
		FC BASE	5	FLOOR PLUGS RECEPTION	
		FC NORTH	6	BASEMENT PLUG & MAIN FLR. PLUG	
		FC EAST	7	20A UPS PLUG	
		FC-8 1ST MESS	8	1ST FLR. N/E FLOOR PLUG	
		FC-8 2ND MESS	9	1ST FLR. N/E FLOOR PLUG	
		FC-SOUTH 1ST	10	METASYS PLUG	
		FC-SOUTH 2ND	11	1ST FLR. WEST PLUG	
		FC WEST	12	SUMP 1	
		FC-6 1ST MESS	13	SUMP 2	
		FC-6 2ND MESS	14	SUMP 3	
		REC. BASE	15	SUMP 4	
		REC. BASE	16	SUMP 5	
		COMPRESSOR	17	SUMP 6	
		COMPRESSOR	18	PUMP ALARM	
		CONVEYOR	19	WHEELCHAIR INCLINE PLATFORM LIFT	
		BOILERS	20	DO-01 & DO-02 AUTOMATIC DOOR OPERATORS	
		SPARE	21	BLANK	

ELECTRICAL EQUIPMENT SCHEDULE
SUPPLY & INSTALL. ALSO SEE ARCHITECTURAL HARDWARE CODES

	AUTOMATIC POWER DOOR OPERATOR (LOW-ENERGY DOOR OPERATOR - PUSH SIDE MOUNT), LCN 4642, 695.
	AUTOMATIC POWER DOOR OPERATOR (LOW-ENERGY DOOR OPERATOR - PULL SIDE MOUNT), LCN 4631, 695.
	AUTOMATIC DOOR ACTUATION SWITCH, 36" COLUMN OF TOUCH ACTIVATION THE INGRESS/ C/W ALUMINUM SQUARE BOLLARD POST. INTERIOR ALUMINUM SQUARE BOLLARD POST SHALL BE 6"x6"x 1/4" THICK X36" HIGH. INTERIOR ALUMINUM SQUARE BOLLARD POST SHALL BE 6"x6"x 1/4" THICK X48" HIGH TO HAVE SWITCH DESIGNED FOR EXTERIOR USE. MOUNT BOLLARD POST AS SHOWN.
	WHEELCHAIR INCLINED PLATFORM LIFT: GARAVENTA, XPRESS II SEE DRAWING E1 NOTES FOR SUPPLY & INSTALLATION - 800X1000mm (31 1/2" X 39 3/8") - COLOR: SATIN GREY - POWER SUPPLY: 208-240 VAC, 20 AMP, 1 PHASE, 50/60 HZ.
STANDARD PLAFORM SAFETY FEATURES FOR INFORMATION ONLY <ul style="list-style-type: none">- SAFETY SENSING.- LEADING RAMP SENSOR.- UNDER PLATFORM SENSING PLATE.- BI-DIRECTIONAL SENSING.- PLATFORM GRAB RAIL.- EMERGENCY FOLD.- CURVED SAFETY ARMS.- HOUR COUNTER.- MANUAL EMERGENCY LOWERING.- OVERSPEED SAFETY.	
OPTIONAL PLATFORM FEATURES <ul style="list-style-type: none">- FOLDING SEAT ASSEMBLY.- SIDE LOAD.- AUTO FOLD.- EMERGENCY BATTERY LOWERING.- ILLUMINATED EMERGENCY STOP BUTTON AND ALARM.- DRIVE SYSTEM.- POWER WITH DISCONNECT SWITCH.- GUIDE RAILS.- 41/2" X 7 5/16" X 2" LOWER CALL STATION WITH EMERGENCY STOP BUTTONS AND ATTENDANT CALL SWITCH.- 6 1/2" X 9" X 1/16" UPPER CALL STATIONS WITH EMERGENCY STOP BUTTONS AND ATTENDANT CALL SWITCH.- KEYLESS.- PLATFORM CONTROLS WITH ILLUMINATION.- REMOTE PLATFORM FOLD.- UPPER & LOWER RAIL WITH PEDESTRIAN GRAB RAIL.- FREESTANDING SUPPORT TOWERS COMPLETE WITH STAIR SUPPORT BEAMS & MOUNTING PLATES.	
ADDITIONAL SAFETY OPTIONS <ul style="list-style-type: none">- AUDIO VISUAL ALERT.- AUXILIARY POWER.	
NOTE: STAIR SUPPORT BEAM DESIGNED BY THE CITY OF WINNIPEG AND FABRICATED & INSTALLED BY OTHERS. INSTALLATION OF SUPPORT TOWERS, MOUNTING PLATES & ANCHORING TO BEAM BY WINNIPEG ELEVATOR LTD.	

NOTES :
ALSO SEE ELECTRICAL NOTES ON DRAWING E1 & ARCHITECTURAL DRAWINGS.

SEQUENCE OF OPERATION:

FROM THE EXTERIOR OF OUTSIDE DOOR VISITOR ENGAGES A DOOR BUZZER. A CLERK INSIDE THE BUILDING VISUALLY CONFIRMS THE VISITOR'S ID AND ENGAGES 'DOOR UNLOCK' BUTTON. PBR. THE 'DOOR UNLOCK' BUTTON SENDS A REQUEST TO EXIT (REX-01) SIGNAL TO CARD ACCESS PANEL. THE CARD ACCESS PANEL ENERGIZES THE ELECTRIC STRIKE AND THE DOOR UNLOCKS. POWER APPLIED TO THE STRIKE ENERGIZES CONNECTED IN PARALLEL WITH THE STRIKE 'DOOR UNLOCKED' WEATHER RESISTANT BUZZER. THE BUZZER OPERATES FOR THE ACCESS TIME. THE POWER APPLIED TO THE STRIKE ENERGIZES CONNECTED IN PARALLEL WITH THE STRIKE RELAY (RL-01), THROUGH NORMALLY OPEN (NO) CONTACTS OF WHICH TRAVELS THE SIGNAL FROM THE OUTSIDE DOOR OPERATOR BUTTON TO THE DOOR OPERATOR LOGIC BOARD, LOCATED IN THE BASEMENT. THE OUTSIDE DOOR OPERATOR BUTTON BECOMES ENABLED FOR THE ACCESS TIME. THE VISITOR ENGAGES THE OUTSIDE BUTTON OF THE DOOR OPERATOR AND THE DOOR OPENS. THE CARD ACCESS PANEL SENSES THE DOOR POSITION CHANGE AND THE CARD ACCESS PANEL DE-ENERGIZES THE ELECTRIC STRIKE WHICH DEACTIVATES THE 'DOOR UNLOCKED' BUZZER AND DISABLES THE OUTSIDE DOOR OPERATOR BUTTON. THE SYSTEM RETURNS TO THE DEFAULT STATE.

NO.	REVISION/DESCRIPTION	BY	DATE
SEALS			

DRAWN BY RCP/DTA DATE 2010.11.12	CHECKED BY USER APPROVAL	APPROVED
CITY OF WINNIPEG PLANNING, PROPERTY AND DEVELOPMENT DEPARTMENT MUNICIPAL ACCOMMODATIONS DIVISION 300 - 65 GARRY ST. R3C 4K4		

PROJECT
ARCHIVES BUILDING
INTERIOR RENOVATIONS
& BARRIER FREE LIFT INSTALLATION
380 WILLIAM AVE.

SHEET TITLE		
PARTIAL MAIN & SECOND FLOOR PLAN - ELECTRICAL RENOVATION & SCHEDULES		
SCALE AS SHOWN	PROJECT NO. 2008-079-03	SHEET NO. E3