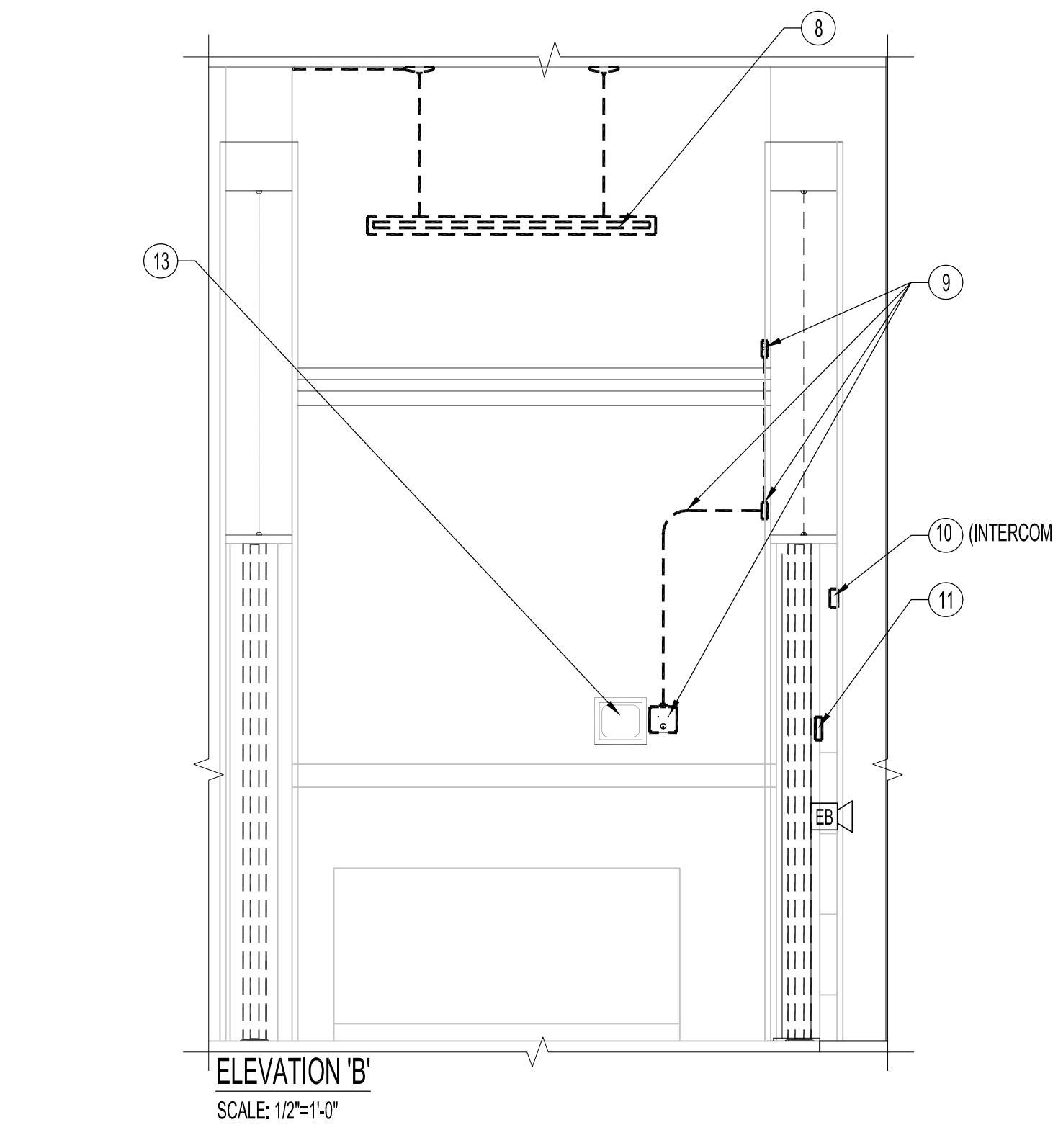
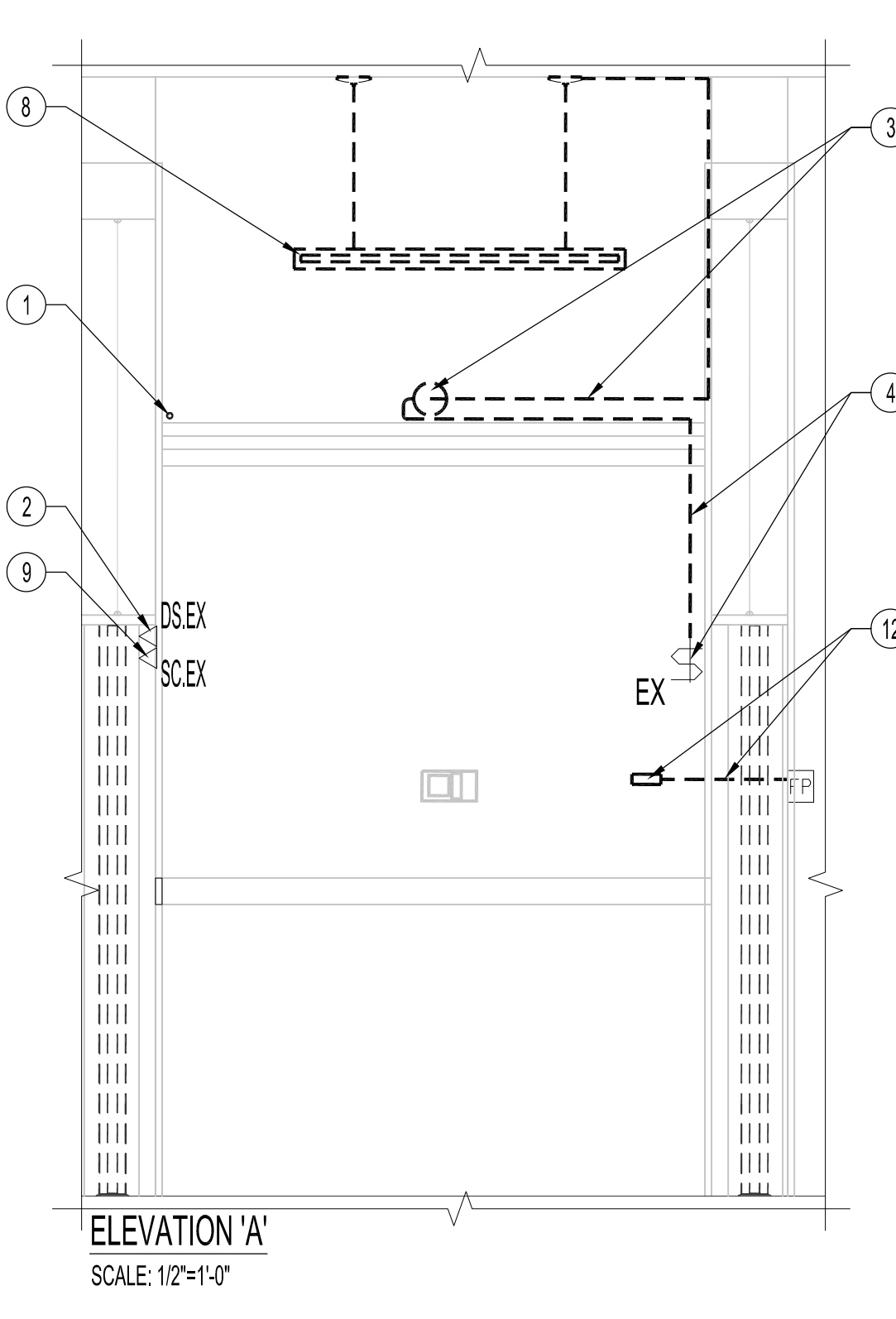
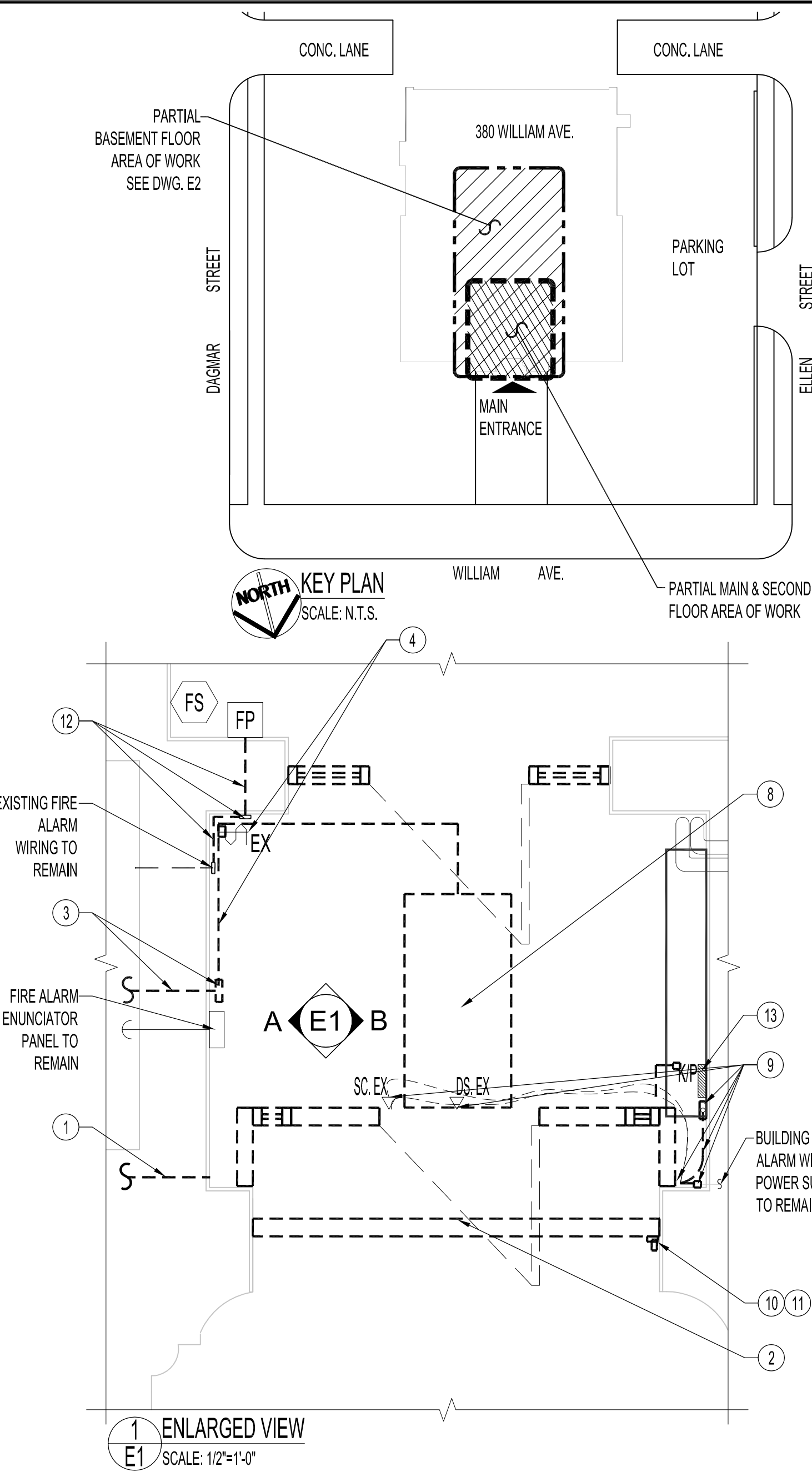


- PARTIAL MAIN FLOOR ELECTRICAL DEMOLITION NOTES:**
ALSO SEE ELECTRICAL RENOVATION DWG.
- EXISTING TO REMAIN
TO BE DEMOLISHED
- REMOVE & DISCARD ABANDONED OVERHEAD WALL CONDUIT & WIRING BACK TO SOURCE.
 - REMOVE & DISCARD SURFACE MOUNTED ELECTRIC DOOR STRIKE CONTACTS & WIRING BACK TO SOURCE.
 - REMOVE & DISCARD SURFACE MOUNTED OCTAGON BOX, CONDUITS & WIRING BACK TO SOURCE.
 - REMOVE & DISCARD DEVICE BOX, LIGHT SWITCH & COVER PLATE. REMOVE & DISCARD WIRING & CONDUIT BACK TO SOURCE.
 - REMOVE & DISCARD ABANDONED WIRING (IN EXISTING DOOR JAMB) BACK TO SOURCE.
 - REMOVE, DISCARD & REPLACE 2 HEAD EMERGENCY LIGHT FIXTURES. EXISTING OCTAGON BOXES TO REMAIN.
 - REMOVE & DISCARD WIRE CLAMP LOCATED AT TOP OF SURFACE MOUNTED DEVICE BOX. SUPPLY & INSTALL METAL BLANK PLUG TO ACCOMMODATE EXISTING HOLE SIZE.
 - REMOVE & DISCARD BANK OF FLUORESCENT CEILING LIGHT FIXTURES. EXISTING WIRING/CIRCUIT TO ACCOMMODATE NEW LUMINAIRES. SEE LIGHT FIXTURE SCHEDULE. NEW WIRING CIRCUIT TO BE TOTALLY CONCEALED IN CEILING.
 - REMOVE & RETAIN SURFACE MOUNTED BUILDING ALARM KEY SWITCH BOX. REMOVE & DISCARD ALL EXPOSED BUILDING ALARM CONDUITS, WIRING, LB CONNECTORS, SECURITY DOOR CONTACT SWITCHES & SIDELIGHT SECURITY TAPE. ACCOMMODATE EXISTING WIRING/CIRCUITS TO NEW SECURITY COMPONENTS. NEW WIRING CIRCUIT TO BE TOTALLY CONCEALED.
 - REMOVE & DISCARD EXTERIOR BUILDING INTERCOM BOX. ACCOMMODATE EXISTING WIRING/CIRCUITS TO NEW INTERCOM ON EXTERIOR SQUARE BOLLARD POST.
 - REMOVE & DISCARD ABANDONED EXTERIOR PLASTIC DEVICE BOX & WIRING BACK TO SOURCE.
 - DISCONNECT, REMOVE & DISCARD FIRE ALARM CONDUIT & LB CONNECTORS. PREPARE EXISTING WALL FOR CONCEALED CONDUIT & WIRING FROM SOURCE TO EXISTING FIRE ALARM PULL STATION.
 - EXISTING BUILDING ALARM KEY PANEL & WIRING TO REMAIN.
 - REMOVE, DISCARD & REPLACE (2) WALL MOUNTED FLORESCENT LIGHT FIXTURES. SEE LIGHT FIXTURE SCHEDULE.
 - CONTRACTOR TO DISCONNECT, REMOVE & RECONNECT EXISTING ELECTRICAL COMPONENTS, OCTAGON BOXES, CONDUITS, WIRING AND CABLES AS REQUIRED TO ACCOMMODATE NEW CEILING INSTALLATION IN AREA SHOWN DASHED. CONTRACTOR TO VERIFY EXISTING & REMOVE & DISCARD ALL REDUNDANT WIRING & CONDUITS AS REQUIRED. ALSO SEE ARCHITECTURAL DWG.

ELECTRICAL SYMBOLS	
SUPPLY & INSTALL UNLESS OTHERWISE NOTED	
EX	EXISTING
AV-T	AUDIO / VISUAL ALERT
UPCSTN	UPPER CALL STATION
LWCSTN	LOWER CALL STATION
EX	EMERGENCY DOUBLE HEAD LAMP TO BE REMOVED & REPLACED
EX	PANELBOARD 'E' (EXISTING) SEE PARTIAL BASEMENT FLOOR PLAN
EX	WALL RECEPTACLE
EX	EXISTING FLOOR RECEPTACLE TO REMAIN
EX	LIGHT KEY SWITCH (EXISTING TO BE REMOVED & REPLACED WITH SAME)
NEW	LIGHT KEY SWITCH
FS	FIRE SIREN BELL (EXISTING TO REMAIN)
FP	FIRE ALARM MANUAL PULL STATION (EXISTING TO REMAIN)
MD EX	SECURITY MOTION DETECTOR (EXISTING TO REMAIN)
DS. EX	ELECTRIC DOOR CONTACTS (EXISTING TO BE REMOVED & DISCARDED)
SC. EX	SECURITY DOOR CONTACTS (EXISTING TO BE REMOVED & DISCARDED)
SC.	SECURITY DOOR CONTACTS
KP	BLDG. SECURITY KEY PANEL (EXISTING TO REMAIN)
	CEILING LUMINAIRE TO BE REMOVED & DISCARDED.
	WALL MOUNTED LUMINAIRE TO BE REMOVED & DISCARDED. (SEE PARTIAL SECOND FLOOR PLAN - ELECTRICAL DEMOLITION)
J/B	JUNCTION BOXES / OCTAGON BOXES
DC	SECURITY DOOR CONTACTS FOR D101A ONLY GE MODEL # 1076CH-N, 3/4" DIAMETER.
CR	FUTURE SECURITY CARD READER FOR D101A.
INT	EXTERIOR INTERCOM
CB	EXTERIOR WEATHERPROOF CALL/DOOR BUZZER
PBR	SECURITY PUSH BUTTON REMOTE FOR (D101A) ELECTRIC STRIKE ONLY
ES	SECURITY ELECTRIC DOOR STRIKE FOR D101A ONLY
RTE	SECURITY REQUEST TO EXIT SENSOR FOR D101A ONLY
MD	SECURITY MOTION DETECTOR FOR VESTIBULE
K/S	SECURITY ALARM KEY SWITCH (EXISTING TO REMAIN)



NOTES :

BID OPPORTUNITY No: 471-2010
ALSO SEE ARCHITECTURAL DRAWINGS.

THE WHEEL CHAIR LIFT, GARAVENTA XRESS II WILL BE SUPPLIED, UNDER A DIFFERENT CONTRACT, BY WINNIPEG ELEVATOR ACCESSIBILITY CO. THE INSTALLATION OF THE LIFT WILL BE SHARED BETWEEN THE CONTRACTOR FOR THIS CONTRACT AND WINNIPEG ELEVATOR ACCESSIBILITY CO. AS FOLLOWS:

(A) WINNIPEG ELEVATOR ACCESSIBILITY CO. IS RESPONSIBLE FOR:
(I) ALL WIRING OF THE LIFT COMPONENTS, MOTOR, CALL STATIONS, AUDIO VISUAL AND OPTIONS ORDERED WITH THE LIFT.
(II) INSTALLATION OF ALL MECHANICAL PARTS OF THE LIFT.

(B) THE CONTRACTOR FOR THIS CONTRACT WILL BE RESPONSIBLE FOR:
(I) MAIN LINE POWER RUN TO THE LIFT CONTROLLER.
(II) CORING OR DRILLING OF ANY HOLES REQUIRED FOR FLOOR MOUNTED TOWERS.
(III) COORDINATION WITH WINNIPEG ELEVATOR ACCESSIBILITY CO. INCLUDING THE TOWERS MOUNTED ON MARBLE STAIRS AND ALL CORING OF TOWER SUPPORT HOLES. WINNIPEG ELEVATOR ACCESSIBILITY CO. CONTACT: GREG BELL 237-8858

ALL PRODUCTS AND MATERIALS TO BE USED AND INSTALLED SHALL CONFORM WITH MANUFACTURER'S SPECIFICATIONS & APPLICABLE CODES INCLUDING ELECTRICAL LOADS. CONTRACTOR TO ADD ADDITIONAL ELECTRICAL PANELBOARDS COMPLETE WITH CIRCUITS AS REQUIRED.

ALL NEW CIRCUIT BREAKERS TO SUIT EXISTING PANELBOARDS.

RUN ALL NEW ELECTRICAL CONDUITS & WIRING FROM EXISTING OR NEW BASEMENT PANEL BOARDS TO APPROPRIATE WHEELCHAIR INCLINE PLATFORM LIFT & AUTO ASSIST DOOR COMPONENTS. INSTALL CONDUITS & WIRING AS CLOSE TO BASEMENT CEILING & WALLS AS POSSIBLE. PROVIDE METAL SLEEVES IN CONCRETE & MARBLE FLOORS FOR CONDUITS & WIRING RUNS FROM BASEMENT TO MAIN FLOOR AUTOMATIC DOOR, WHEELCHAIR INCLINE PLATFORM LIFT COMPONENTS, AUTO ASSIST DOOR OPERATORS, VERTICAL ACTIVATION COLUMNS, CARD READER & CALL BUZZER.

ALL NEW LIGHTING FIXTURES TO BE CONNECTED TO APPROPRIATE PANELS, EXCEPT FOR EMERGENCY LIGHT REMOTE HEADS TO BE CONNECTED TO EXISTING EMERGENCY LIGHT BATTERY PACK(S).

SUPPLY & INSTALL LAMACODI NAMEPLATES ON ALL NEW EMERGENCY & FLORESCENT LIGHT FIXTURES, RENOVATED TRIM PLATES, DISCONNECT SWITCHES. UPDATE EXISTING PANEL BOARDS AS REQUIRED.

ALL RENOVATION WORK SHALL BE COORDINATED WITH TENANT TO MINIMIZE DISRUPTION OF DAILY SERVICES. ALL ESSENTIAL BUILDING SERVICES INCLUDING FIRE DETECTION SYSTEM & BUILDING ALARM SYSTEM SHALL BE MAINTAINED DURING RENOVATIONS IN ACCORDANCE WITH LATEST BUILDING CODES AND BY-LAWS.

ALL BUILDING SECURITY, FIRE ALARM & INTERCOM COMPONENTS AFFECTED BY RENOVATION WORK SHALL BE TESTED AND MADE FULLY FUNCTIONAL BY THE CONTRACTOR, CO-ORDINATE ALL SYSTEM SHUT-DOWNS, START UPS & TESTING, WITH CITY OF WINNIPEG, CENTRAL CONTROL OFFICE. 986-2351.

CONTRACTOR SHALL ROUTE & RECESS ALL NEW CONDUITS, WIRING, LIGHT SWITCH, DEVICE BOXES, OCTAGON BOXES & WHEELCHAIR INCLINE PLATFORM LIFT COMPONENTS WITHIN EXISTING WALLS, CEILINGS, NEWEL POSTS & NEW & EXISTING DOOR JAMBS. ALL WIRING TO BE FISHED IN CONDUIT, OR ARMORED CABLE WHERE APPLICABLE, FROM POWER SOURCES TO LISTED COMPONENTS.

ALL WHEELCHAIR INCLINE PLATFORM LIFT ELECTRICAL COMPONENT INSTALLATIONS SHALL BE CO-ORDINATED WITH WINNIPEG ELEVATOR ACCESSIBILITY CO. WHEELCHAIR INCLINE PLATFORM LIFT ELECTRICAL TERMINATIONS TO BE DONE BY WINNIPEG ELEVATOR ACCESSIBILITY CO.

CONTRACTOR TO CO-ORDINATE BUILDING SECURITY & CARD ACCESS INSTALLATION WORK WITH CITY OF WINNIPEG BUILDING MAINTENANCE SERVICES BRANCH PH: 986-2351.

NO.	REVISION/DESCRIPTION	BY	DATE
SEALS			
DRAWN BY	RC/DTA	CHECKED BY	APPROVED
DATE	2010.11.12	USER APPROVAL	
CITY OF WINNIPEG PLANNING, PROPERTY AND DEVELOPMENT DEPARTMENT MUNICIPAL ACCOMMODATIONS DIVISION 300 - 65 GARRY ST. R3C 4K4			
PROJECT ARCHIVES BUILDING INTERIOR RENOVATIONS & BARRIER FREE LIFT INSTALLATION 380 WILLIAM AVE.			
SHEET TITLE PARTIAL BASEMENT, MAIN & SECOND FLOOR PLAN - ELECTRICAL DEMOLITION			
SCALE AS SHOWN	PROJECT NO. 2008-079-03	SHEET NO. E1	