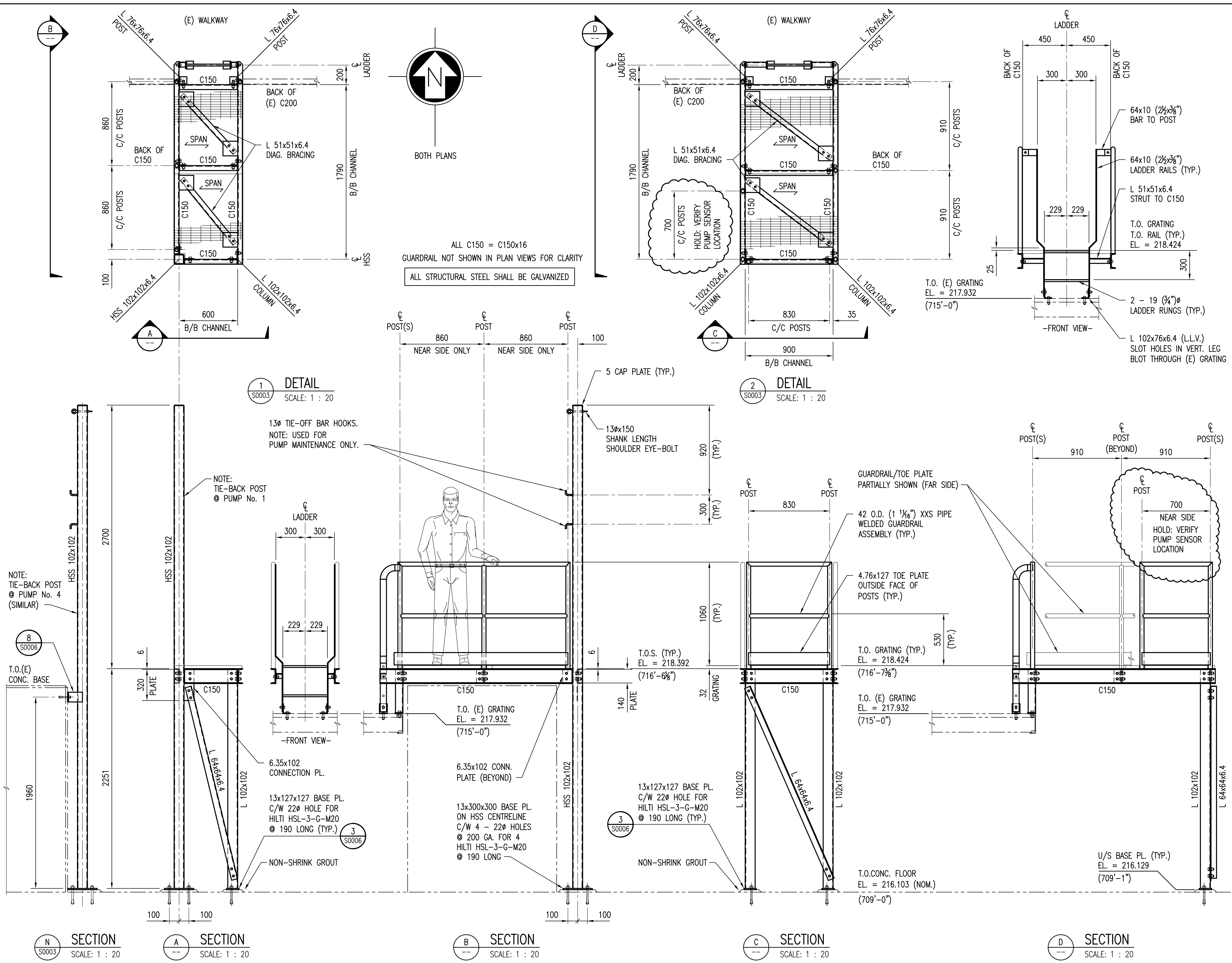


A1 SIZE - 594mm x 841mm
 LAST SAVE: 2010/05/25 - 11:17am
 PATH: M:\112577\0114\4ENG\425TR\DO - General DWG\1-0102G-S0004-001-00.DWG



NOTES:

- SEE DRAWING 1-0102G-S0001 FOR GENERAL NOTES.
- STRUCTURAL STEEL:**
 - ALL STRUCTURAL STEEL SHAPES AND PLATES TO CONFORM TO CSA G40.21-300W. W SECTIONS AND HSS SECTIONS TO CONFORM TO CSA G40.21-350W.
 - DETAILING, FABRICATION AND ERECTION TO BE IN ACCORDANCE WITH CAN/CSA-S16-01.
 - ALL WELDING TO CONFORM TO CSA W47.1 & W59.
 - WELDING SHOPS TO BE CERTIFIED TO DIVISION 1 OR 2 OF CSA W47.1 BY THE CANADIAN WELDING BUREAU. ALL WELDING TO BE PERFORMED BY CWB CERTIFIED WELDERS.
 - ALL BOLTS FOR STRUCTURAL STEEL SHALL BE 20mm HIGH STRENGTH BOLTS MEETING THE REQUIREMENTS OF ASTM A325-94, TYPE 1. ALL NUTS SHALL CONFORM TO ASTM SPEC A563, GRADE DH, OR ASTM A194, GRADE 2H, AND WASHERS SHALL CONFORM TO ASTM SPEC F436. BOLTS, NUTS AND WASHERS SHALL NOT BE WELDED.
 - BAR GRATING TO BE FISHER & LUDLOW OR APPROVED EQUAL, W-30-102 WITH 32x4.8 SERRATED BEARING BARS, GALVANIZED AND ENDS BANDED UNLESS NOTED OTHERWISE.
 - GRATING TO BE FASTENED TO SUPPORTING STEEL WITH PURPOSE FIT GALVANIZED CLIPS AT MAXIMUM 300 (12") CENTRES, INCLUDING REMOVABLE PANELS.
 - ALL STRUCTURAL STEEL SHALL BE HOT-DIP GALVANIZED IN ACCORDANCE WITH ASTM A123 TO A MIN. NET RETENTION OF: 610 GRAMS/METRE SQ. FOR LESS THAN 6 THICK, 702 GRAMS/METRE SQ. GREATER THAN 6 THICK. TOUCH UP DAMAGED AREAS WITH 2 COATS OF Z.R.C. GALVALITE GALVANIZING COMPOUND TO ASTM A780.
 - TOUCH UP ALL FIELD WELDS AND DAMAGED AREAS WITH ZINC RICH PRIMER OR PRIMER AND TOPCOAT FOR HDG OR PAINTED SURFACES, RESPECTIVELY.
 - NON-SHRINK, NON-METALLIC CEMENTITIOUS GROUT TO BE SIKA 212 OR MASTERFLOW 713.
 - SUBMIT 3 PRINTS AND 1 REPRODUCIBLE OF EACH STEEL SHOP DRAWING FOR REVIEW PRIOR TO FABRICATION AND ERECTION. SHOP DRAWINGS TO BE SEALED BY A PROFESSIONAL ENGINEER INDICATING DESIGN RESPONSIBILITY FOR CONNECTIONS AND DETAILING, WHERE APPLICABLE.

CONNECTION DESIGN:

- ALL CONNECTIONS SHALL BE EITHER SHOP WELDED OR FIELD BOLTED USING HIGH STRENGTH ASTM A325 BOLTS, UNLESS OTHERWISE NOTED ON DRAWINGS. MINIMUM BOLT DIAMETER SHALL BE 19MM WITH A MINIMUM TWO BOLTS REQUIRED PER CONNECTION.

DESIGN OF BOLTED CONNECTIONS:

- DESIGN ALL BOLTED CONNECTIONS IN ACCORDANCE WITH CAN/CSA-S16-01 AND THE CISC CODE OF STANDARD PRACTICE FOR STRUCTURAL STEEL.
- ALL CONNECTIONS SHALL BE DESIGNED AND DETAILED BY THE STEEL FABRICATOR. CONNECTION CONFIGURATIONS SHALL (IN GENERAL) CONFORM WITH THE DETAILS PROVIDED. THE STEEL FABRICATOR SHALL ADVISE THE ENGINEER IN WRITING WHEN DEVIATION FROM THE APPROVED CONNECTION CONFIGURATION DETAILS IS REQUIRED.
- OVERSIZED HEAVY DUTY 60mm DIA. x 5mm THICK HARDENED PLATE WASHERS REQUIRED AT ALL SLOTTED/BOLTED CONNECTION LOCATIONS (TYP.)

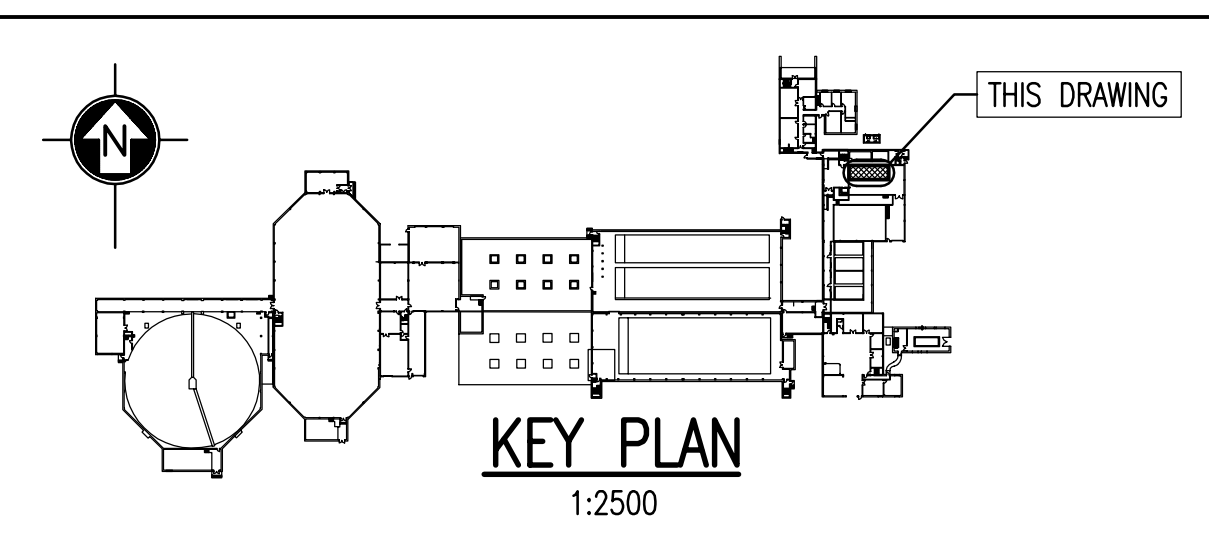
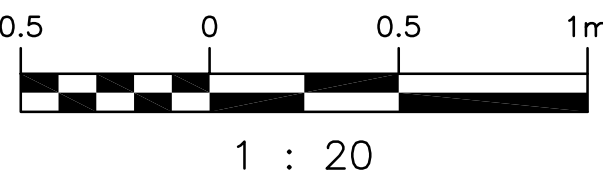
SHOP WELDED CONNECTIONS:

- ALL SHOP WELDING SHALL CONFORM TO CSA W59.1. CONTRACTOR TO BE CERTIFIED IN ACCORDANCE WITH CSA W47.1, DIVISION 1 OR 2. ALL WELDERS TO BE CWB CERTIFIED FOR THE REQUIRED WELDS.
- ALL WELDS TO BE CONTINUOUS FILLET OR GROOVE SEAL WELDS. GROOVE WELDS TO BE DETAILED AS FULL PENETRATION WELDS WITH BACKER PLATE.

FIELD WELDED CONNECTIONS:

- ALL FIELD WELDING SHALL CONFORM TO CSA W59.1. CONTRACTOR TO BE CERTIFIED IN ACCORDANCE WITH CSA W47.1, DIVISION 1 OR 2. ALL WELDERS TO BE CWB CERTIFIED FOR THE REQUIRED WELDS.
- ALL FIELD WELDED CONNECTIONS SHALL BE 6mm FILLET WELDS OR BUTT WELDS, CONTINUOUS AND ALL AROUND, UNLESS SHOWN OTHERWISE.

DRAWING NUMBER	REFERENCE DRAWINGS
1-0102G-S0006	DRY WELL G102-RSP & G103-RSP - DETAIL 4
1-0102G-S0005	DRY WELL G102-RSP & G103-RSP - DETAILS 3 & 5
1-0102G-S0003	DRY WELL G101-RSP TO G104-RSP ACCESS PLATFORMS



NO.	REVISIONS	DATE	DESIGN	CHECK
0	RELEASED FOR TENDER	2010/05/21	B.F.D.	

DESIGNED BY:	D. S. SIDHU	CHECKED BY:	R. C. BEAN
DRAWN BY:	B. DICKSON	APPROVED BY:	C. J. REIMER
SCALE:	1:20	RELEASED FOR CONSTRUCTION BY:	J. VILLEUX
DATE:	2009/12/21	DATE:	2010/05/25
CONSULTANT NO.:	112577-0114-42DD-0024		

ENGINEER'S SEAL

ORIGINAL DRAWING SEALED BY: R. C. BEAN
SNC-LAVALIN
2010/05/21
REV. 0

THE CITY OF WINNIPEG
WATER AND WASTE DEPARTMENT

SOUTH END WATER POLLUTION CONTROL CENTRE
SAFETY UPGRADES
PLAN & SECTIONS
DRY WELL RAW SEWAGE PUMP G101-RSP
ACCESS PLATFORMS DETAILS 1 & 2

CITY DRAWING NUMBER: 1-0102G-S0004

SHEET: 001

REV. 0

SIZE: A1