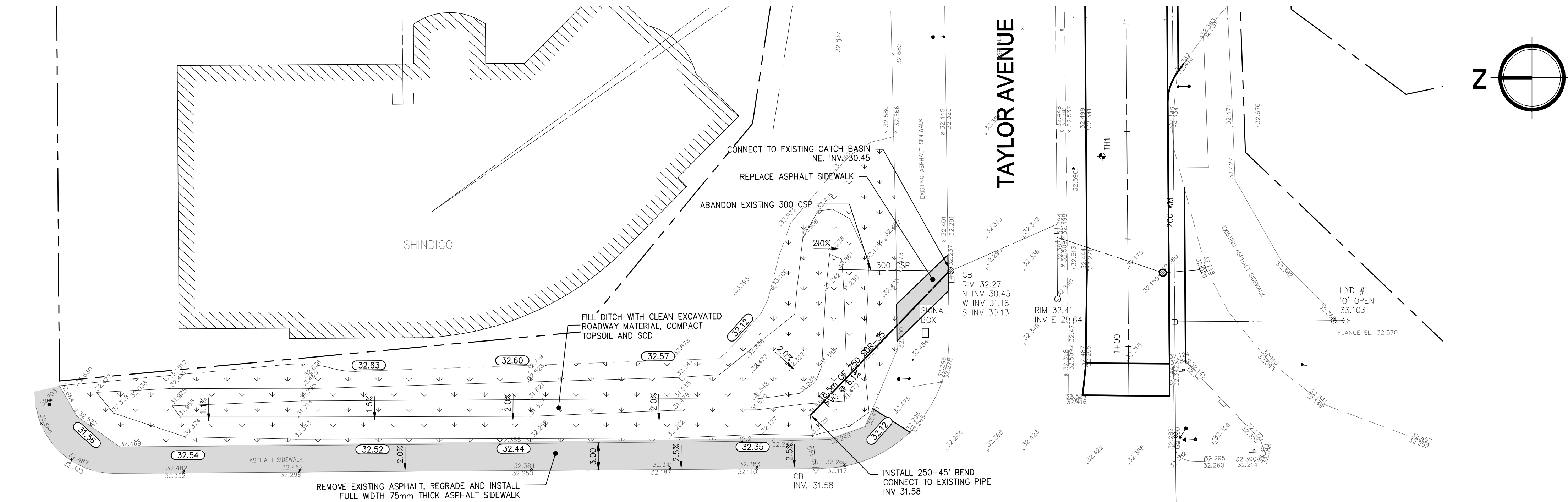
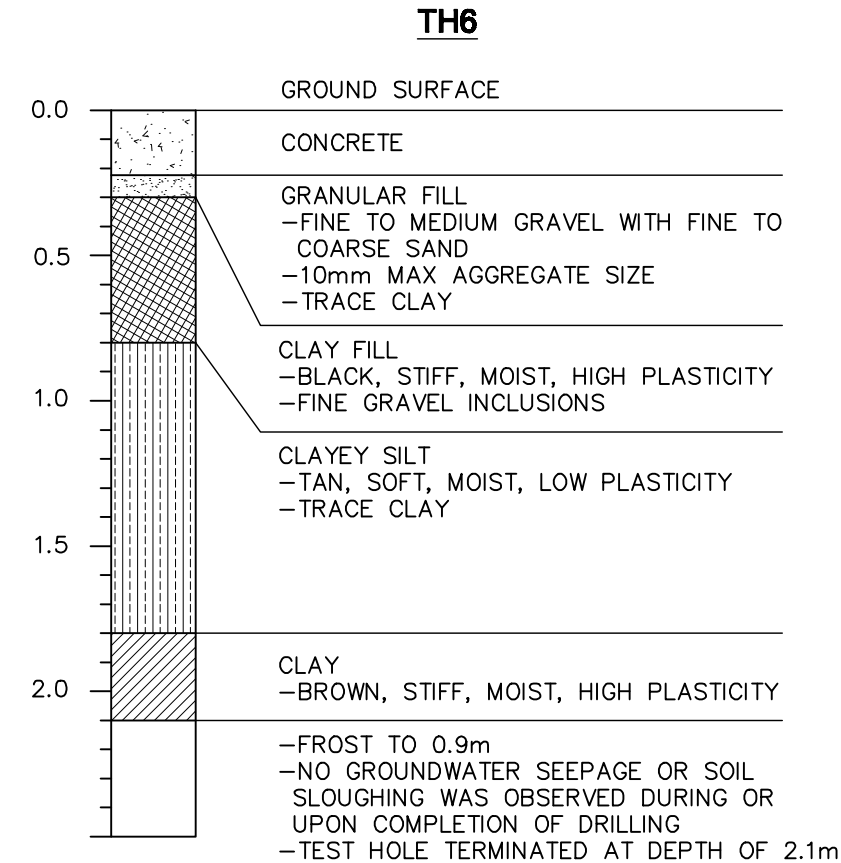
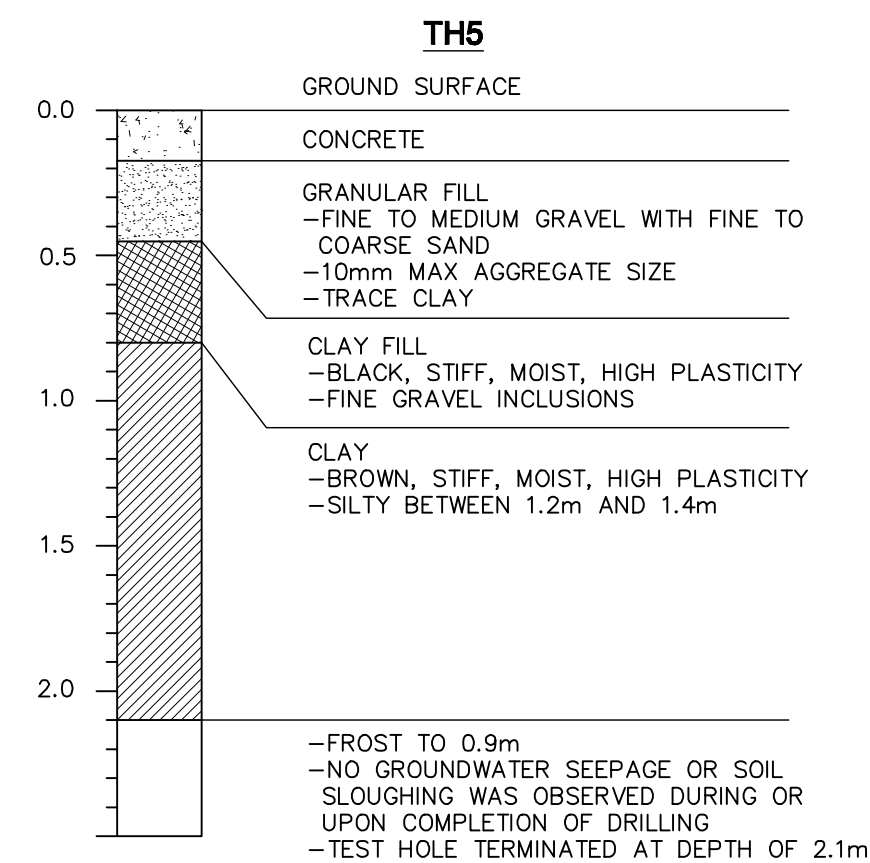
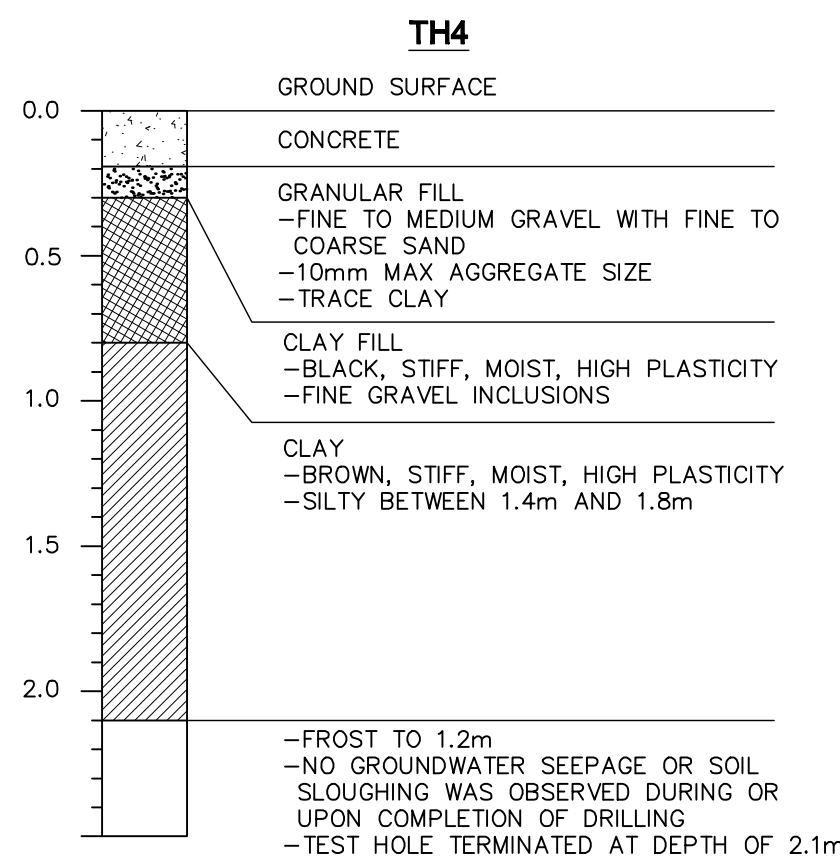
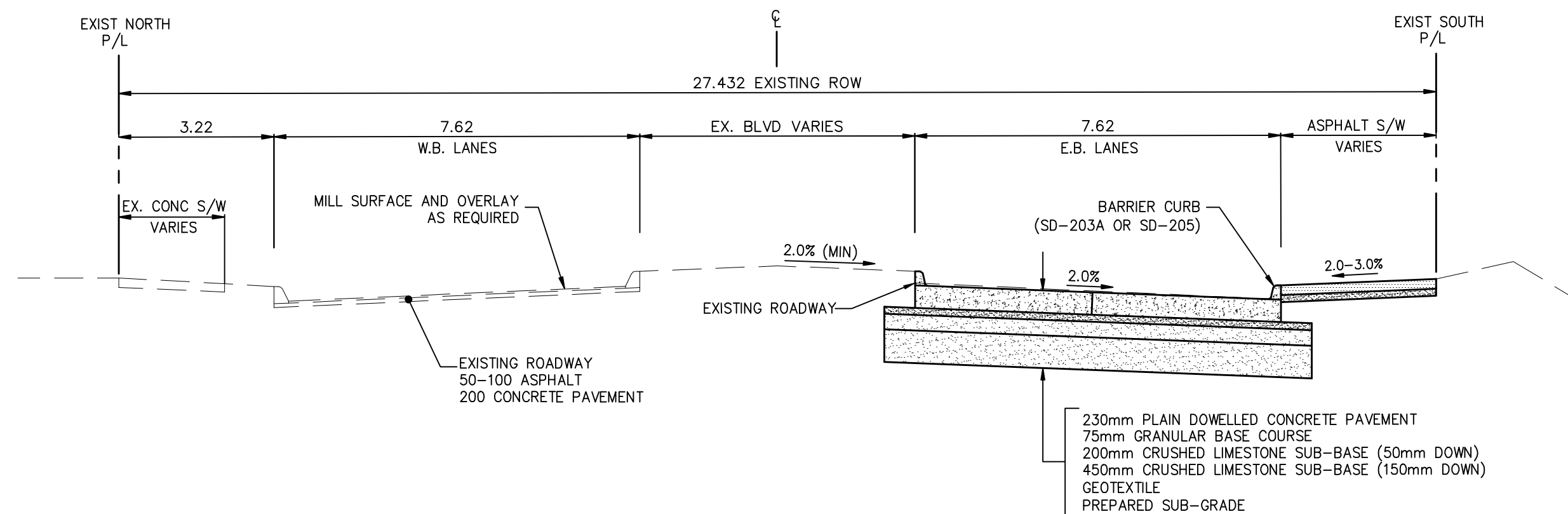
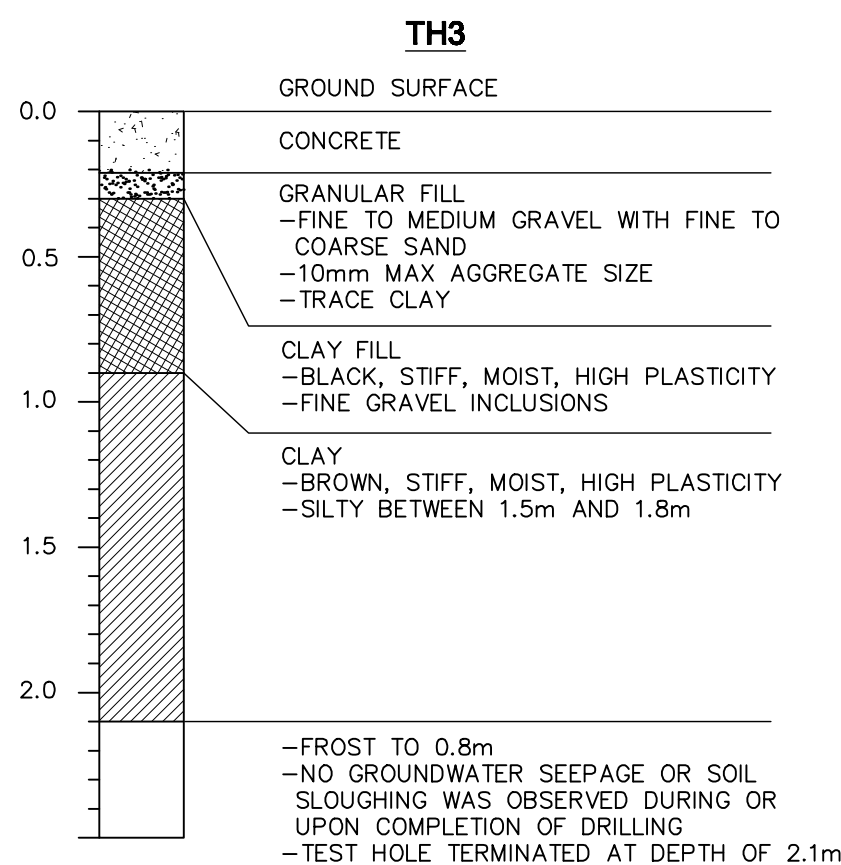
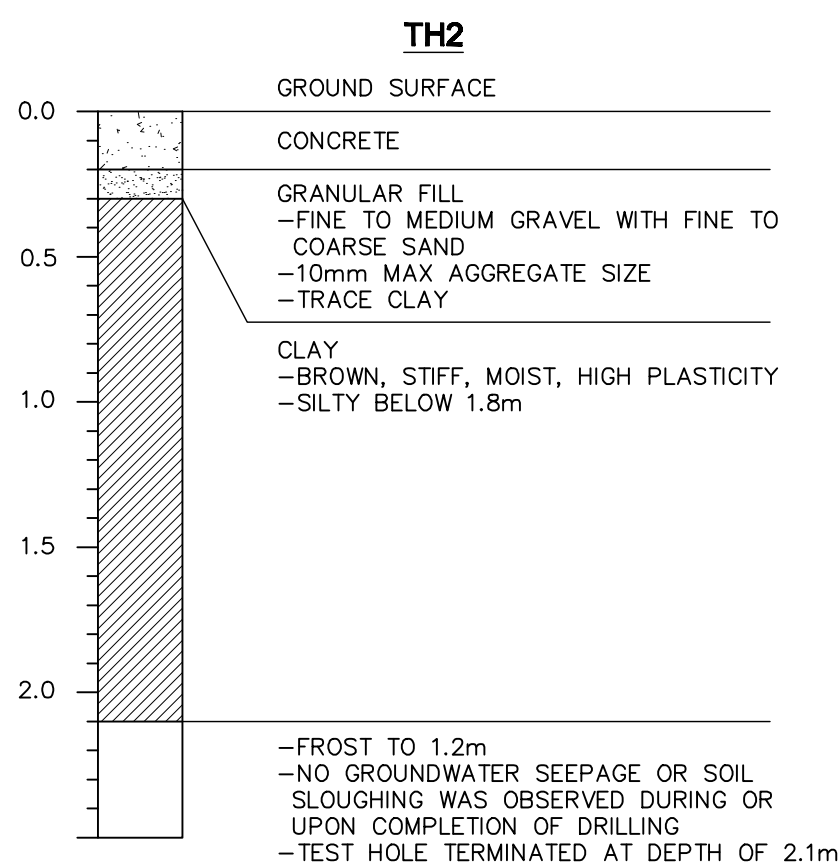
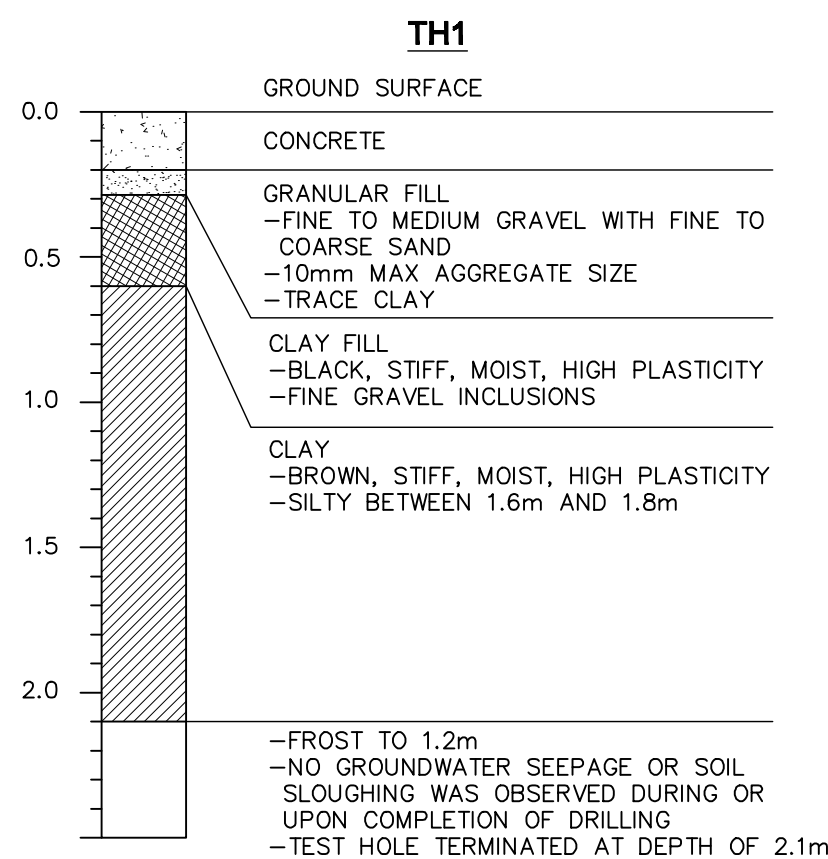


Apr. 26, 2010 - 10:28am
P:\5509118-00-5509118-000 2010 Taylor Avenue Rehabilitation\MM Drawings\CONSTRUCTION\5509118-C-002-C-011_220410.dwg -188-C-011 DITCH IMPROVEMENTS



WAVERLEY STREET



NOTE:
These design documents are prepared solely for the use by the party with whom the design professional has entered into a contract and there are no representations of any kind made by the design professional to any party with whom the design professional has not entered into a contract.

| EXISTING | LEGEND-PLAN | PROPOSED | EXISTING | LEGEND-PLAN | PROPOSED | EXISTING | LEGEND-PROFILE | PROPOSED |
|----------|---------------------------|----------|----------|--------------------------------|----------|----------|----------------|----------|
| ◆ | HYDRANT | ◆ | --- | COMBINED SEWER | --- | --- | MEDIAN GUTTER | --- |
| ⊗ | VALVE | ⊗ | --- | M.T.S. | --- | --- | GUTTER | --- |
| ○ | MANHOLE | ● | --- | GAS | --- | --- | | --- |
| △ | UTILITIES ADJUSTED | △ | --- | SUBDRAIN | --- | --- | | --- |
| □ | CATCH BASIN | ■ | --- | PROPERTY LINE | --- | --- | | --- |
| △ | CURB INLET | ▲ | --- | SIDEWALK RAMP | --- | --- | | --- |
| ◆ | HYDRO POLE/LIGHT STANDARD | ◆ | --- | ROUGH CONCRETE/ASPHALT OVERLAY | --- | --- | | --- |
| #111 | BUSINESS NUMBERS | #111 | --- | ASPHALT | --- | --- | | --- |
| 31.999 | ELEVATION | 32.20 | --- | CONCRETE | --- | --- | | --- |
| --- | WATERMAIN | --- | --- | CONCRETE REPAIR | --- | --- | | --- |
| --- | CURB AND GUTTER | --- | --- | MONOLITHIC MEDIAN | --- | --- | | --- |

| LOCATIONS APPROVED UNDERGROUND STRUCTURES |
|--|
| SIGNED BY: _____ DATE: _____ |
| SUPV U/G STRUCTURES _____ |
| LOCATION OF UNDERGROUND STRUCTURES AS SHOWN ARE BASED ON THE BEST INFORMATION AVAILABLE BUT NO GUARANTEE IS GIVEN THAT ALL EXISTING UTILITIES ARE SHOWN OR THAT THE GIVEN LOCATIONS ARE EXACT COORDINATES OF EXISTENCE AND EXACT LOCATION OF ALL SERVICES MUST BE OBTAINED FROM THE INDIVIDUAL UTILITIES BEFORE PROCEEDING |

| | |
|--------------------------------|---|
| G.B.M. 62-010 ELEV. 232.865 | N. SIDE TAYLOR AVENUE, BETWEEN WILTON STREET AND MATHANIEL STREET, T.B.T. IN & CONCRETE FOUNDATION OF NO. 1881 TAYLOR AVENUE, 50m E. & 6m BELOW BROOK FROM S.W. CORNER OF BLDG. |
| DESIGNED BY: KT | CHECKED BY: - |
| DRAWN BY: KT | APPROVED BY: - |
| ISSUED FOR TENDER | 04/22/10 VJ |
| ISSUED FOR UNDERGROUND REVIEW | 02/01/10 VJ |
| NO. REVISIONS | DATE BY |

| | |
|-------------------------------|---|
| MMM GROUP | MMM Group Limited, Suite 111 - 93 Lombard Ave. Winnipeg, MB R3B 3B1 T. 204.943.3178 F. 204.943.4848 www.mmm.ca |
| DESIGNED BY: KT | CHECKED BY: - |
| DRAWN BY: KT | APPROVED BY: - |
| ISSUED FOR TENDER | 04/22/10 VJ |
| ISSUED FOR UNDERGROUND REVIEW | 02/01/10 VJ |
| NO. REVISIONS | DATE BY |

| | |
|--|---|
| ENGINEER'S SEAL PROVINCE OF MANITOBA R.M. BORODY REGISTERED PROFESSIONAL ENGINEER | CONSULTANT A/CAD DWS NO. 5509118-C-011 |
|--|---|

| | |
|--|---------------------------------|
| THE CITY OF WINNIPEG PUBLIC WORKS DEPARTMENT ENGINEERING SERVICES DIVISION | CITY DRAWING NUMBER 11 OF 11 |
| 2010 REGIONAL STREET RENEWAL PROGRAM | BID NO. 24-2010 |
| TAYLOR AVENUE PAVEMENT RECONSTRUCTION AND REHABILITATION | |
| DITCH IMPROVEMENTS NORTHEAST CORNER OF TAYLOR AVENUE & WAVERLEY STREET | |