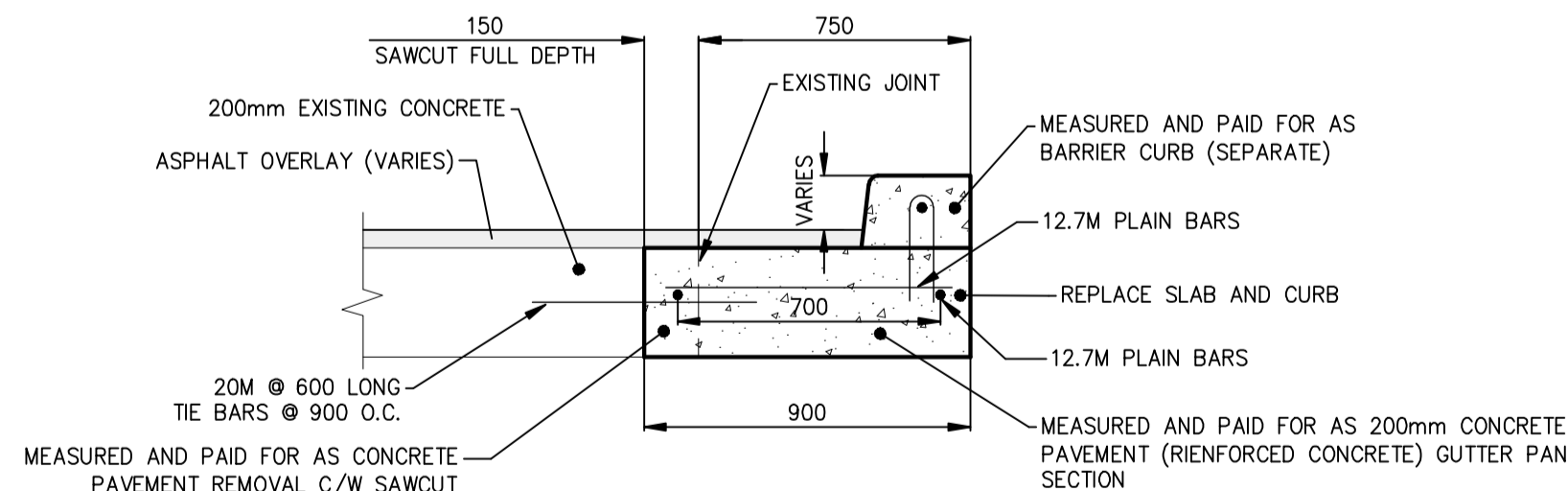
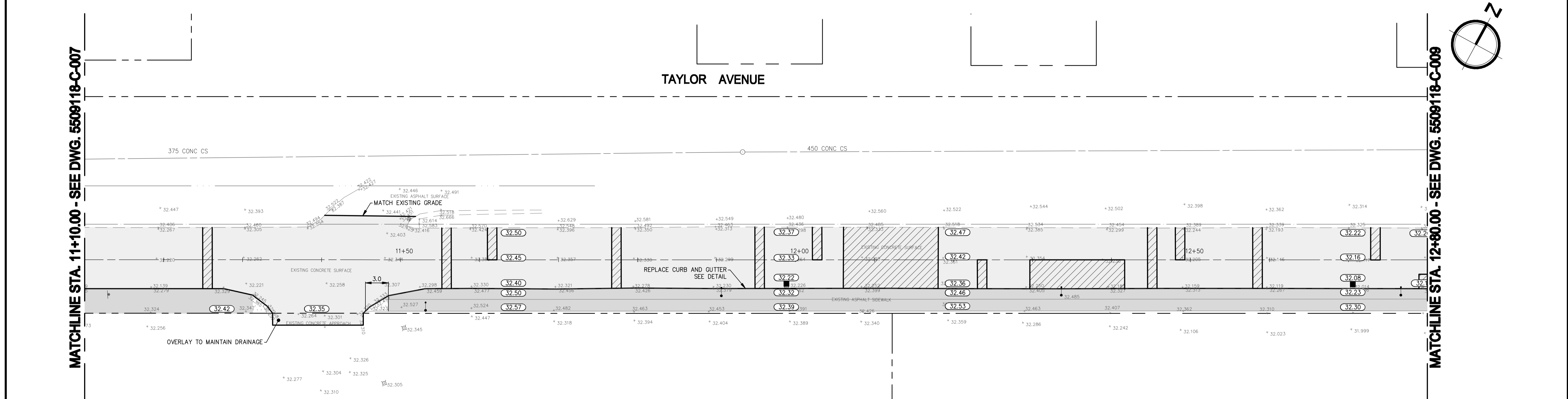
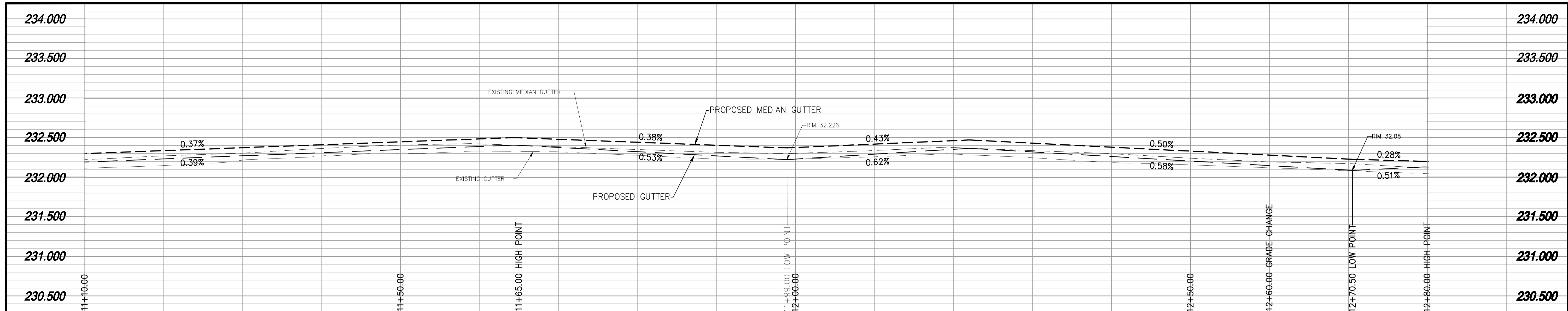


Apr 26, 2010 - 10:15am
P:\550910-550918\550918-000 2010 Taylor Avenue Rehabilitation\MM Drawings\CONSTRUCTION\550918-C-002-C-011_220410.dwg -lab.C-008 11+10 TO 12+80



TYPICAL CURB AND GUTTER DETAIL
NATHANIEL STREET TO WILTON STREET
SCALE N.T.S.

- NOTES:**
1. ALL WORK AND MATERIALS TO BE IN ACCORDANCE WITH THE LATEST REVISION OF THE CITY OF WINNIPEG STANDARD CONSTRUCTION SPECIFICATION, UNLESS OTHERWISE NOTED.
 2. ALL ROADWAY DIMENSIONS SHOWN ARE TO BACK OF CURB.
 3. ADD 200.000 TO OBTAIN ACTUAL GEODETIC ELEVATIONS.
 4. CONTRACTOR TO VERIFY DEPTH OF UTILITIES PRIOR TO CONSTRUCTION. LOCATIONS OF UNDERGROUND STRUCTURES AS SHOWN ARE BASED ON THE BEST INFORMATION AVAILABLE, BUT NO GUARANTEE IS GIVEN THAT ALL EXISTING UTILITIES ARE SHOWN OR THAT THE GIVEN LOCATIONS ARE EXACT. CONFORMATION OF EXISTENCE AND EXACT LOCATIONS OF ALL SERVICES MUST BE OBTAINED FROM THE INDIVIDUAL UTILITIES BEFORE PROCEEDING WITH CONSTRUCTION.
 5. RESTORE ALL SURFACES TO EQUAL OR BETTER CONDITIONS.
 6. ALL CB/MH, CURB INLETS AND CURB AND GUTTER INLET FRAMES AND COVERS TO BE SALVAGED AND DELIVERED TO THE CITY OF WINNIPEG MAINTENANCE YARD ON PACIFIC AVENUE.
 7. INSTALL 600mmx1200mm DETECTABLE WARNING DEVICE AT ALL PEDESTRIAN CROSSWALKS AS DIRECTED BY CONTRACTOR ADMINISTRATOR.

EXISTING	LEGEND-PLAN	PROPOSED	EXISTING	LEGEND-PLAN	PROPOSED	EXISTING	LEGEND-PROFILE	PROPOSED
HYDRANT	◆	◆	COMBINED SEWER	---	---	MEDIAN GUTTER	---	---
VALVE	⊗	⊗	M.T.S.	---	---	GUTTER	---	---
MANHOLE	○	○	GAS	---	---			
UTILITIES ADJUSTED	⊙ ⊗ ⊕ △	⊙ ⊗ ⊕ △	SUBDRAIN	---	---			
CATCH BASIN	□ ⊙	□ ⊙	PROPERTY LINE	---	---			
CURB INLET	△	△	SIDEWALK RAMP	---	---			
HYDRO POLE/LIGHT STANDARD	↔	↔	ROUGH CONCRETE/ASPHALT OVERLAY	---	---			
ELEVATION	32.20	32.20	ASPHALT	---	---			
WATERMAIN	---	---	CONCRETE	---	---			
CURB AND GUTTER	---	---	CONCRETE REPAIR	---	---			
ASPHALT OVERLAY	---	---	MONOLITHIC MEDIAN	---	---			

LOCATIONS APPROVED UNDERGROUND STRUCTURES	
SIGNED BY:	DATE
SUPV U/G STRUCTURES	
LOCATION OF UNDERGROUND STRUCTURES AS SHOWN ARE BASED ON THE BEST INFORMATION AVAILABLE BUT NO GUARANTEE IS GIVEN THAT ALL EXISTING UTILITIES ARE SHOWN OR THAT THE GIVEN LOCATIONS ARE EXACT. CONFORMATION OF EXISTENCE AND EXACT LOCATION OF ALL SERVICES MUST BE OBTAINED FROM THE INDIVIDUAL UTILITIES BEFORE PROCEEDING	

G.B.M. 52-010	N. SIDE TAYLOR AVE. BETWEEN WILTON STREET AND NATHANIEL STREET, TRLT. IN & CONCRETE FOUNDATION OF NO. 1881 TAYLOR AVENUE, 3.0m E. & 0.1m BELOW BRICK FROM S.W. CORNER OF BLDG.
ELEV. 232.885	
ISSUED FOR TENDER 04/22/10 WJ	
ISSUED FOR UNDERGROUND REVIEW 02/01/10 WJ	
NO. REVISIONS	DATE BY

MMM GROUP	
DESIGNED BY KT	CHECKED BY -
DRAWN BY KT/TR	APPROVED BY -
HOR. SCALE 1:250	RELEASED FOR CONSTRUCTION
VERTICAL 1:10	
DATE DECEMBER 2, 2009	DATE

ENGINEER'S SEAL
PROVINCE OF MANITOBA
R.M. BORODY
REGISTERED PROFESSIONAL ENGINEER
CONSULTANT ACAD DWG. NO. 5509118-C-008

METRIC WHOLE NUMBERS INDICATE MILLIMETRES DECIMALIZED NUMBERS INDICATE METRES	THE CITY OF WINNIPEG PUBLIC WORKS DEPARTMENT ENGINEERING SERVICES DIVISION 2010 REGIONAL STREET RENEWAL PROGRAM TAYLOR AVENUE EASTBOUND PAVEMENT REHABILITATION STA. 11+10.00 TO STA. 12+80.00	CITY DRAWING NUMBER BID NO. 24-2010
--	---	--

