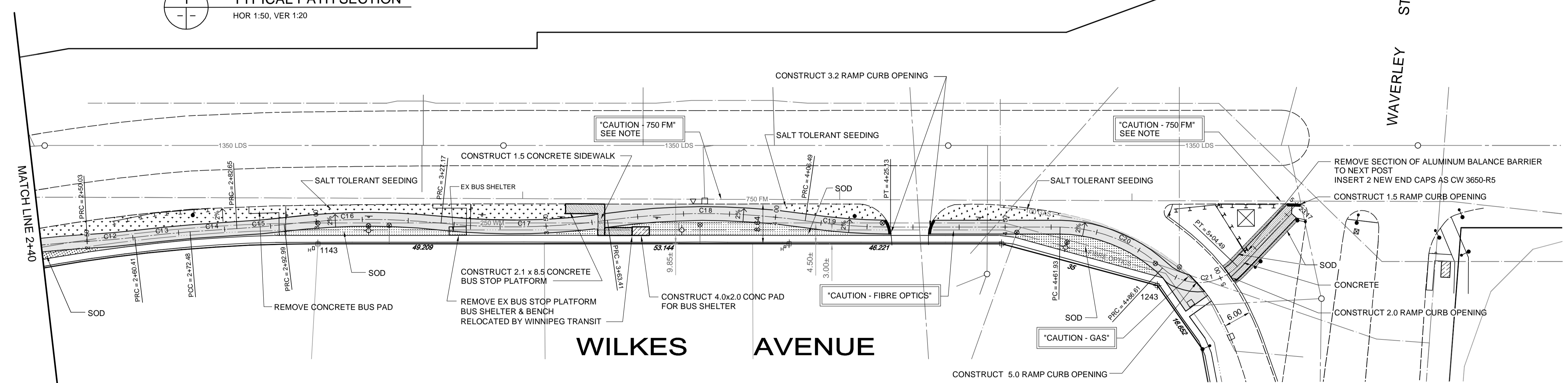


CAUTION: FEEDERMAIN CROSSING
SEE SPECIFICATIONS FOR CONSTRUCTION PROCEDURES AND RESTRICTIONS
CONTACT THE WATER AND WASTE DEPARTMENT CONSTRUCTION SERVICES COORDINATOR AT 986-3823
A MINIMUM OF SEVEN DAYS PRIOR TO CROSSING OR WORKING ADJACENT TO FEEDERMAIN TO ARRANGE FOR INSPECTION.

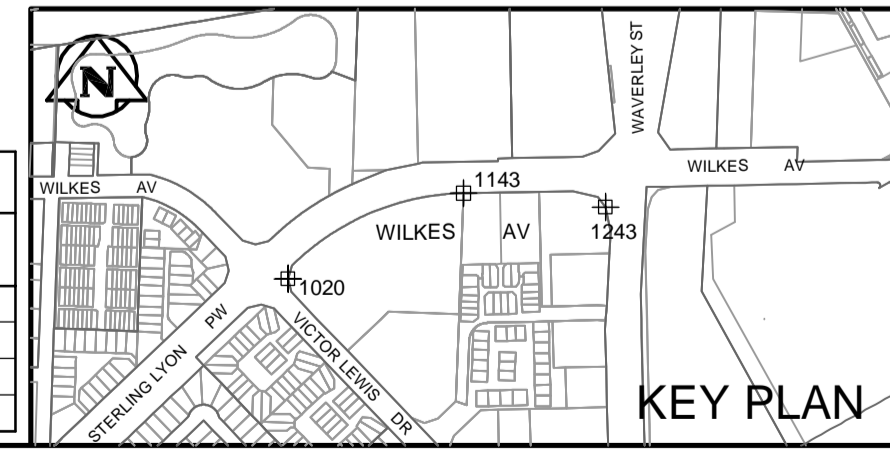
Bike Path Coordinates		
Description	Northing	Easting
PRC = 2+50.03	993.698	1236.360
PRC = 2+60.41	990.097	1246.127
PCC = 2+72.48	986.129	1257.524
PRC = 2+82.65	982.460	1267.013
PRC = 2+92.99	978.909	1276.716
PRC = 3+27.17	964.731	1307.733
PRC = 3+63.41	950.005	1340.752
PRC = 4+06.49	931.728	1379.607
PT = 4+25.13	922.649	1395.863
PC = 4+61.93	907.079	1429.208
PRC = 4+86.61	889.452	1445.689
PT = 5+04.49	883.059	1460.505
5+23.17	889.815	1477.911

CIRCULAR CURVE DATA				
CURVE	RADIUS	TANGENT	DELTA	LENGTH
C12	148.50	5.19	4°00'21"	10.38
C13	357.29	6.03	1°56'07"	12.07
C14	283.38	5.09	2°03'25"	10.17
C15	148.50	5.17	3°59'14"	10.33
C16	151.50	17.16	12°55'30"	34.18
C17	148.50	18.21	13°59'04"	36.24
C18	151.50	21.69	16°17'38"	43.08
C19	128.50	9.33	8°18'34"	18.64
C20	33.72	12.92	41°56'02"	24.68
C21	11.50	11.32	89°06'15"	17.88



APEGM
Certificate of Authorization
Wardrop Engineering Inc.
No. 195 Expiry: April 30, 2010

No.	Wardrop Coordinate		NAD 83 Grid Coordinate		Description
	Northing	Easting	Northing	Easting	
1020	955.007	1013.084	5523036.821	630433.508	IRON BAR
1143	971.984	1281.581	5523170.424	630667.022	IRON BAR
1243	886.625	1442.967	5523164.969	630849.505	IRON BAR



150 WM	WATERMAIN	150 WM	SWALE	TRAFFIC SIGNAL
400 FM	FEEDERMAIN	400 FM	MANHOLE	GAS
300 LDS	LAND DRAINAGE SEWER	300 LDS	CATCHBASIN	HYDRO
250 WWS	WASTEWATER SEWER	250 WWS	HYDRO BOX	MTS
300 CS	COMBINED SEWER	300 CS	HYDRO POLE	SPRINKLER
200 FCM	FORCEMAIN	200 FCM	LIGHT STANDARD	ELEVATION
	JUNCTIONS		ANCHOR	SIDEWALK
	HYDRANT		TREE	CURB
	VALVE		SURVEY BAR	ASPHALT
	CURB STOP		SIGNAL CONTROLLER	CONCRETE
EXISTING	LEGEND-PLAN	PROPOSED	LEGEND-PLAN	PROPOSED

LOCATION APPROVED UNDERGROUND STRUCTURES
SUPV. U/G STRUCTURES COMMITTEE DATE
NOTE: LOCATION OF UNDERGROUND STRUCTURES AS SHOWN ARE BASED ON THE BEST INFORMATION AVAILABLE. BUT NO GUARANTEE IS GIVEN THAT ALL EXISTING UTILITIES ARE SHOWN OR THAT THE GIVEN LOCATIONS ARE EXACT. CONFIRMATION OF EXISTENCE AND EXACT LOCATION OF ALL SERVICES MUST BE OBTAINED FROM THE INDIVIDUAL UTILITIES BEFORE PROCEEDING WITH CONSTRUCTION.

B.M. ELEV.	NO.	ISSUED FOR TENDER	DATE	BY
	00	ISSUED FOR TENDER	10.03.18	DAL
		NO. REVISIONS		

WARDROP PEOPLE, PASSION, PERFORMANCE. TRUSTED GLOBALLY
DESIGNED BY TF CHECKED BY
DRAWN BY GMD APPROVED BY
HOR. SCALE: 1 : 500
VERTICAL: 1 : 20
RELEASED FOR CONSTRUCTION
CONSULTANT DRAWING NO. 1000070100-DWG-C0002-00

PRELIMINARY DRAWING
NOT TO BE USED FOR CONSTRUCTION

THE CITY OF WINNIPEG
PUBLIC WORKS DEPARTMENT
ENGINEERING DIVISION
2010 ACTIVE TRANSPORTATION / INFRASTRUCTURE STIMULUS PROGRAM
WILKES AVENUE BIKE PATH FROM 230m EAST OF VICTOR LEWIS DRIVE TO WAVERLEY STREET
CITY DRAWING NUMBER SHEET OF 2 6
C0002